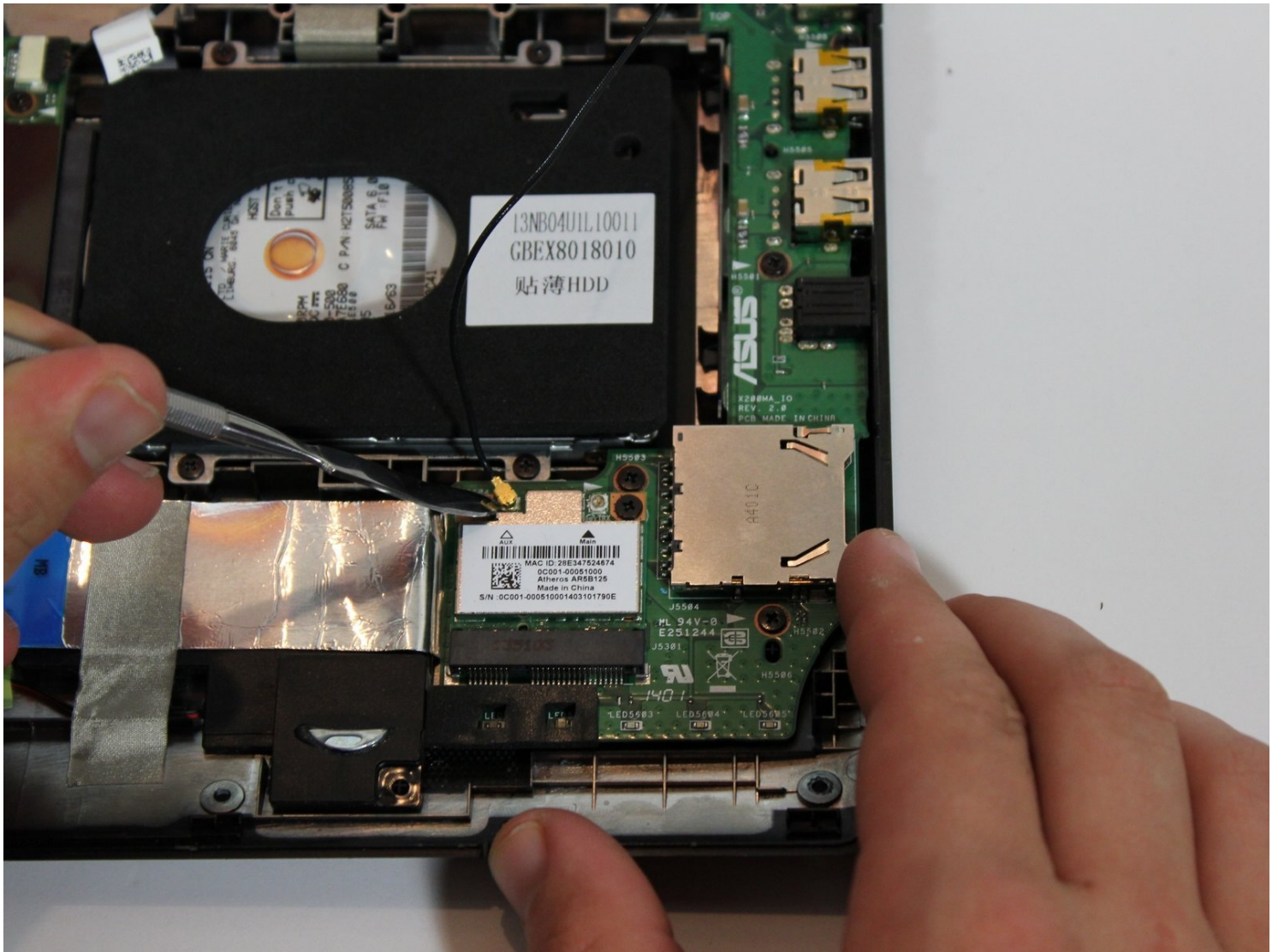




Asus X200MA Wireless Card Replacement

Written By: Vanessa Garcia




TOOLS:

Phillips #0 Screwdriver (1)

Spudger (1)

Step 1 — Back Panel



- Remove the following six screws:
 - Six 4 mm screws using a Phillips #0 screwdriver.
 - Remove the following one screw:
 - One 14 mm screw using a Phillips #0 screwdriver.
-  The 14mm screw goes in the center.

Step 2



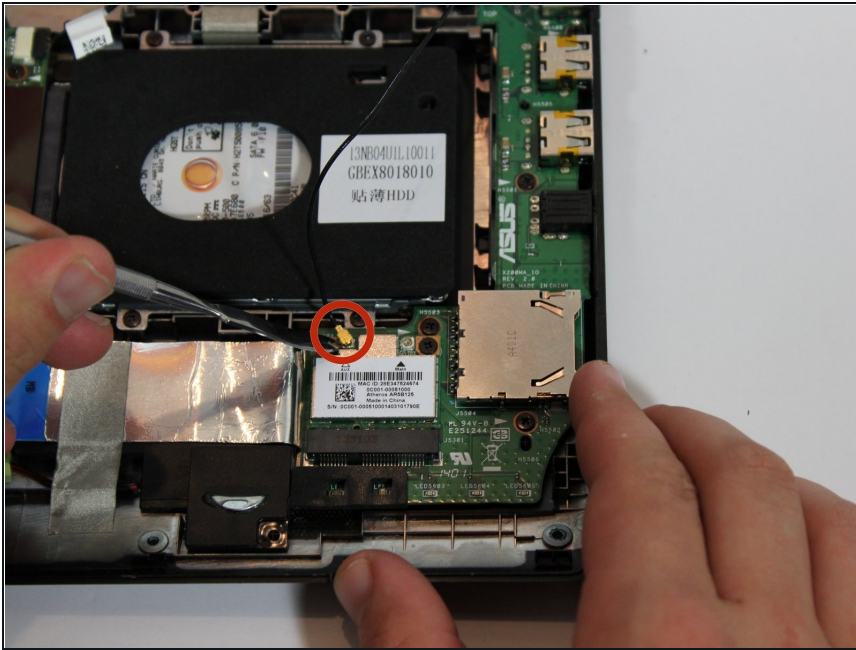
- Take two rubber caps off the back side of the laptop.
- Use a Phillips #0 screwdriver to remove the two 14 mm screws under the rubber caps.

Step 3



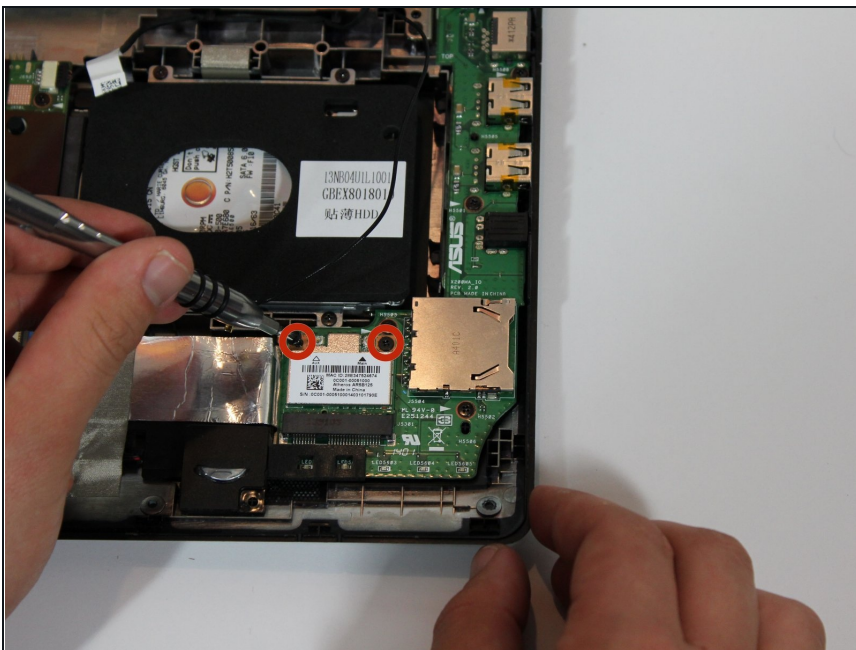
- Use a plastic or metal spudger to separate the keyboard from the back panel and lift the keyboard out of place.

Step 4 — Wireless Card



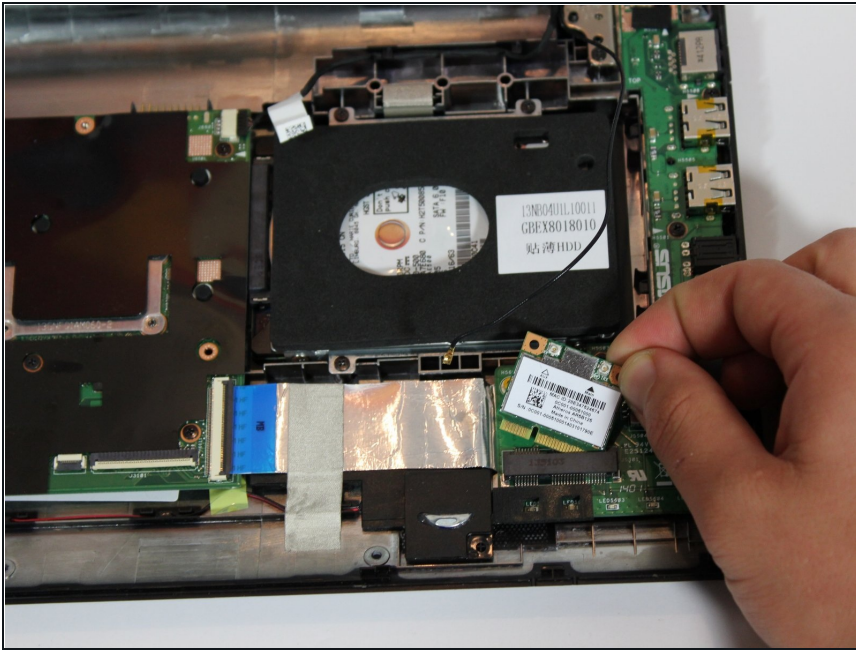
- Take gold cap that connects to a black wire off using the metal spudger.

Step 5



- Remove the following two screws:
 - Two 4 mm screws using Phillips #0 screwdriver.

Step 6



- Slide the component up and out.

To reassemble your device, follow these instructions in reverse order.