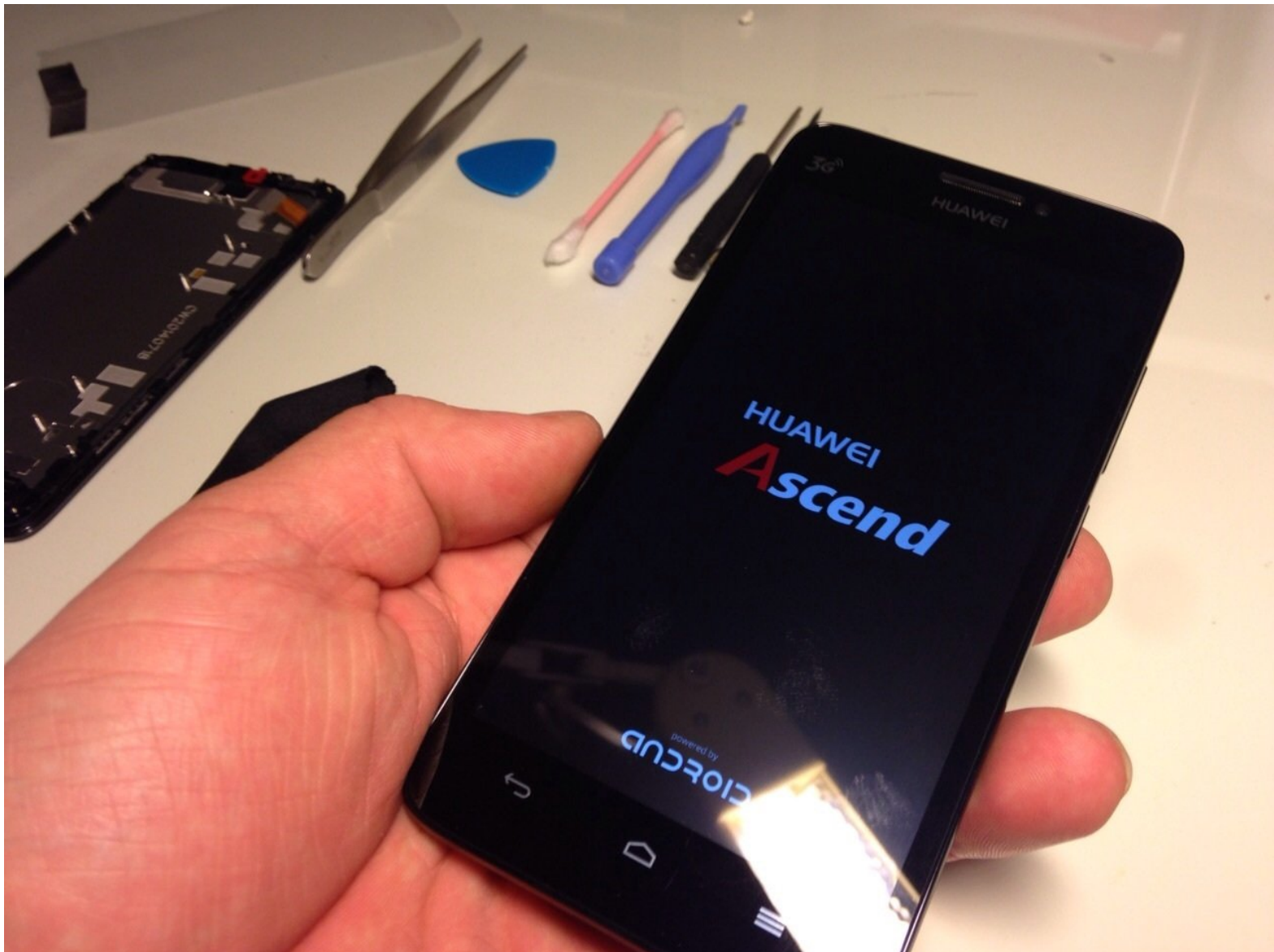




# Huawei Ascend G630 Front Panel Assembly Replacement

A short guide on replacing the whole front panel of Huawei Ascend G630. This repair is relatively straightforward, and can be attempted by a beginner, albeit cautiously.

Written By: Antti Immonen



---

## INTRODUCTION

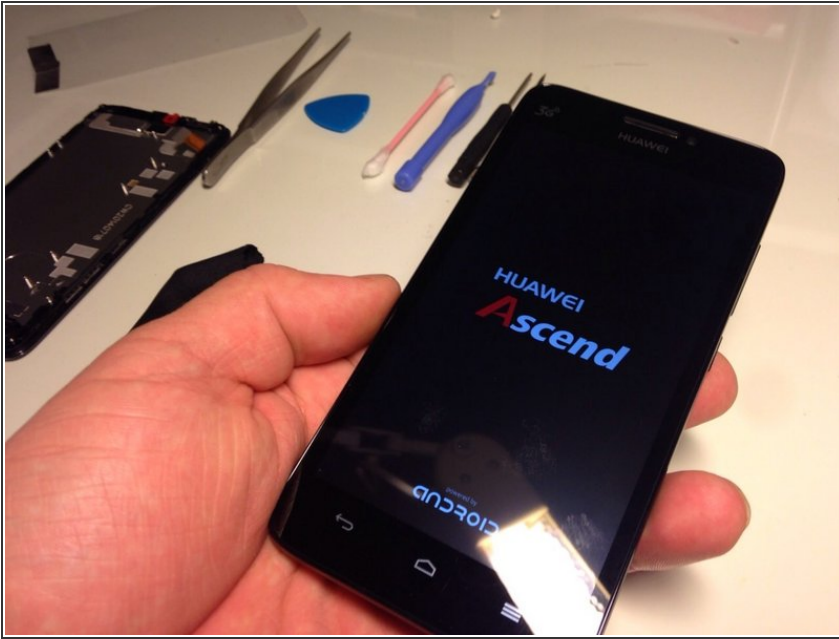
A short guide on replacing the front panel of Huawei Ascend G630.



### TOOLS:

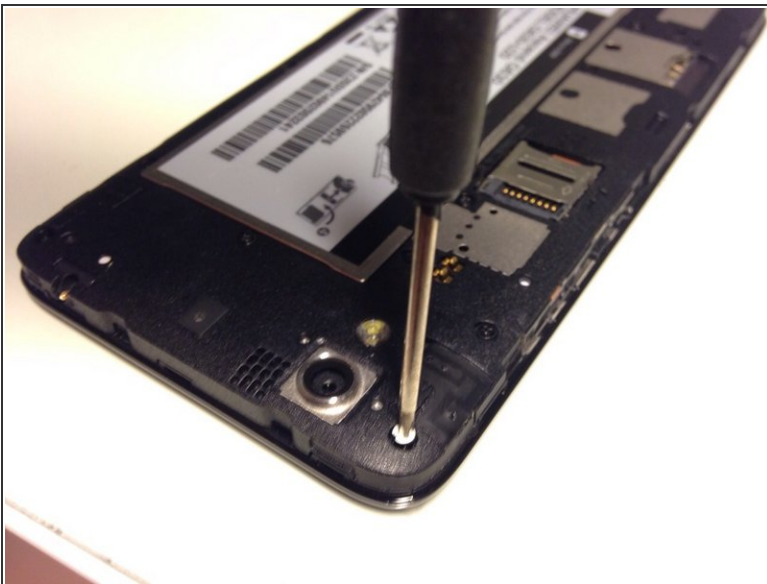
- [Phillips #00 Screwdriver](#) (1)
-

## Step 1 — Front Panel Assembly



- Prepare your tools onto the table and make sure you have everything you need for the repair and a clean workspace.
- Start off by opening back of the Ascend g630 by just sliding either a spudger or a fingernail in between the frame and the back cover and prying it open.

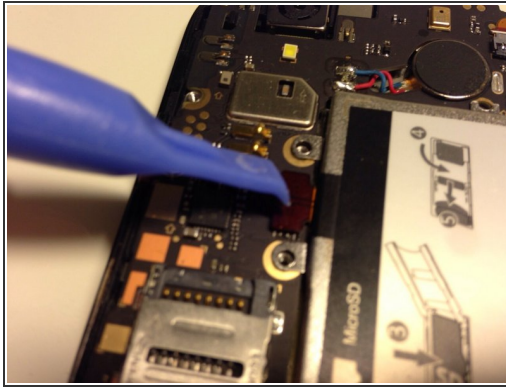
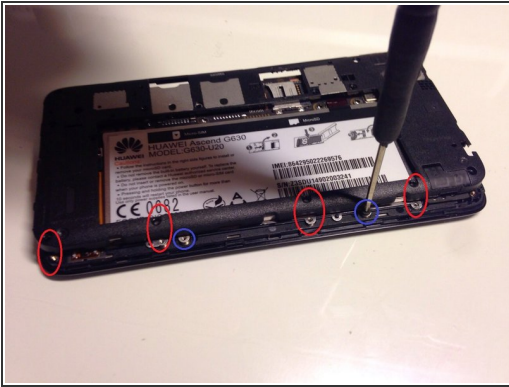
## Step 2



- Using your Phillips screwdriver, unscrew all screws on the back of the phone.
- There is a warranty sticker on the corner screw pointed out in the picture.
- Gently pry between the screen frame and the rear panel of the phone to expose the insides of the phone.

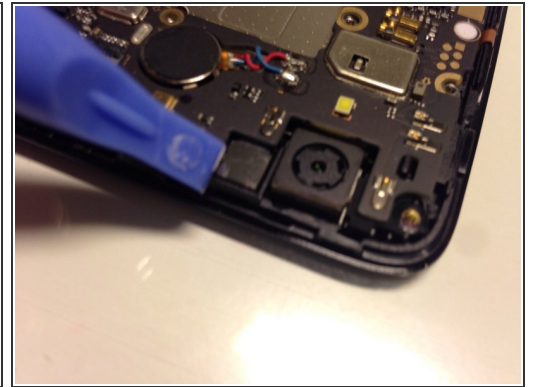
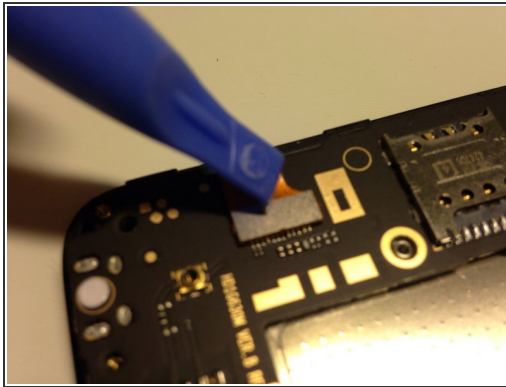
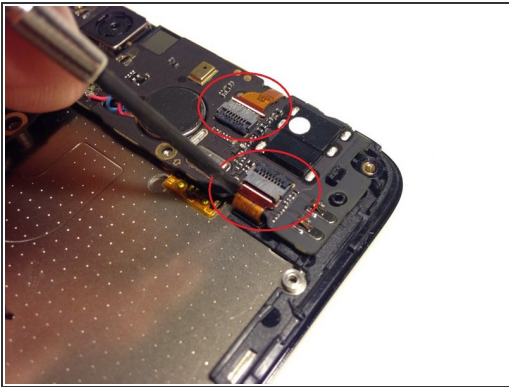


## Step 3 — Remove the battery



- The first picture shows a handy way of finding the correct placement for the battery screws when reassembling the device.
- Disconnect the battery and unscrew the 2 screws holding down the battery. Remove the battery.

## Step 4



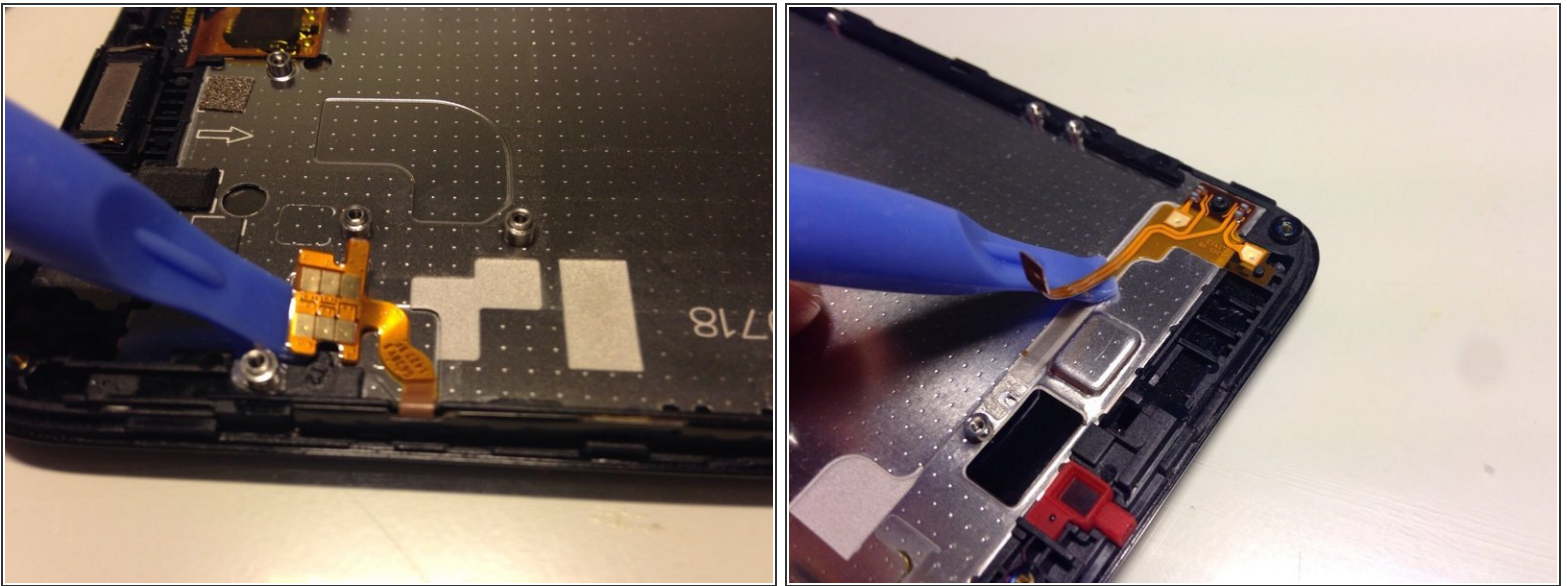
- Disconnect the flex cables from the motherboard.
- Carefully pry the camera loose, so that it can be removed along with the motherboard.

## Step 5



- After undoing the flexcables the motherboard can be released (3 spots marked red) and removed.

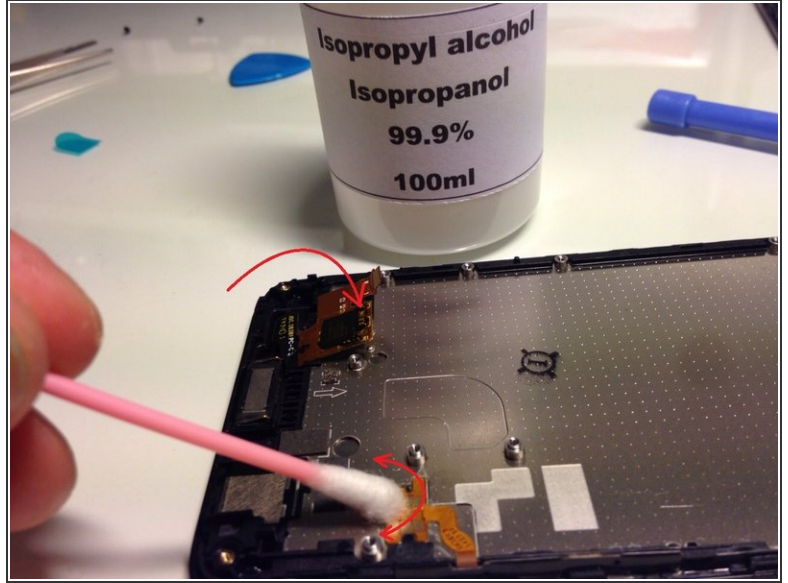
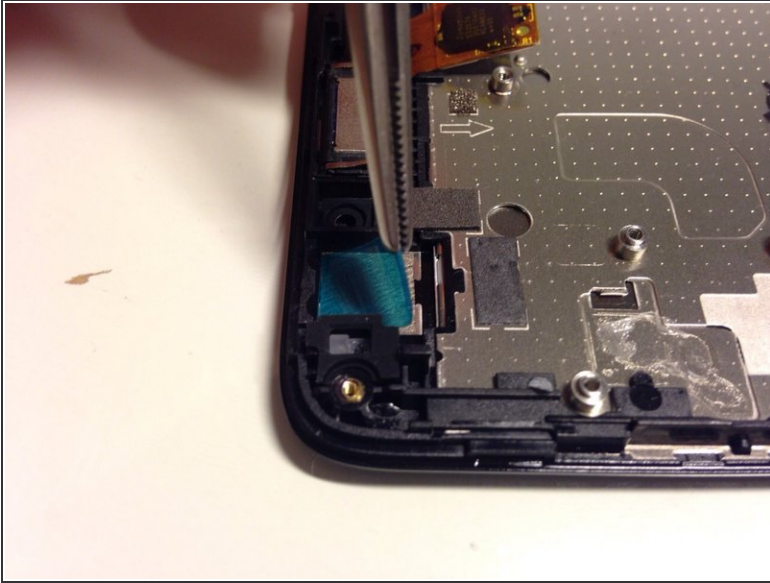
## Step 6



- Remove the volume buttons & flex cables and everything else that might be missing from your new replacement part.
- Carefully pry under the flex cables with a spudger. The flex cables are held down with mild adhesive. A bit of heat might help, but using a heat gun for this step is optional.



## Step 7



- Remove any protective films (blue in picture).
- Make sure the flex cable pointed out in the second picture is glued to the back of the display. A bit of thin double-sided tape will do, if there is no adhesive left on the flex cable.
- As you reassemble the device, make sure you wipe the contacts you have touched with your fingers, with isopropyl alcohol or similar.

## Step 8



- Finished!

To reassemble your device, follow steps 2-6 in reverse order.