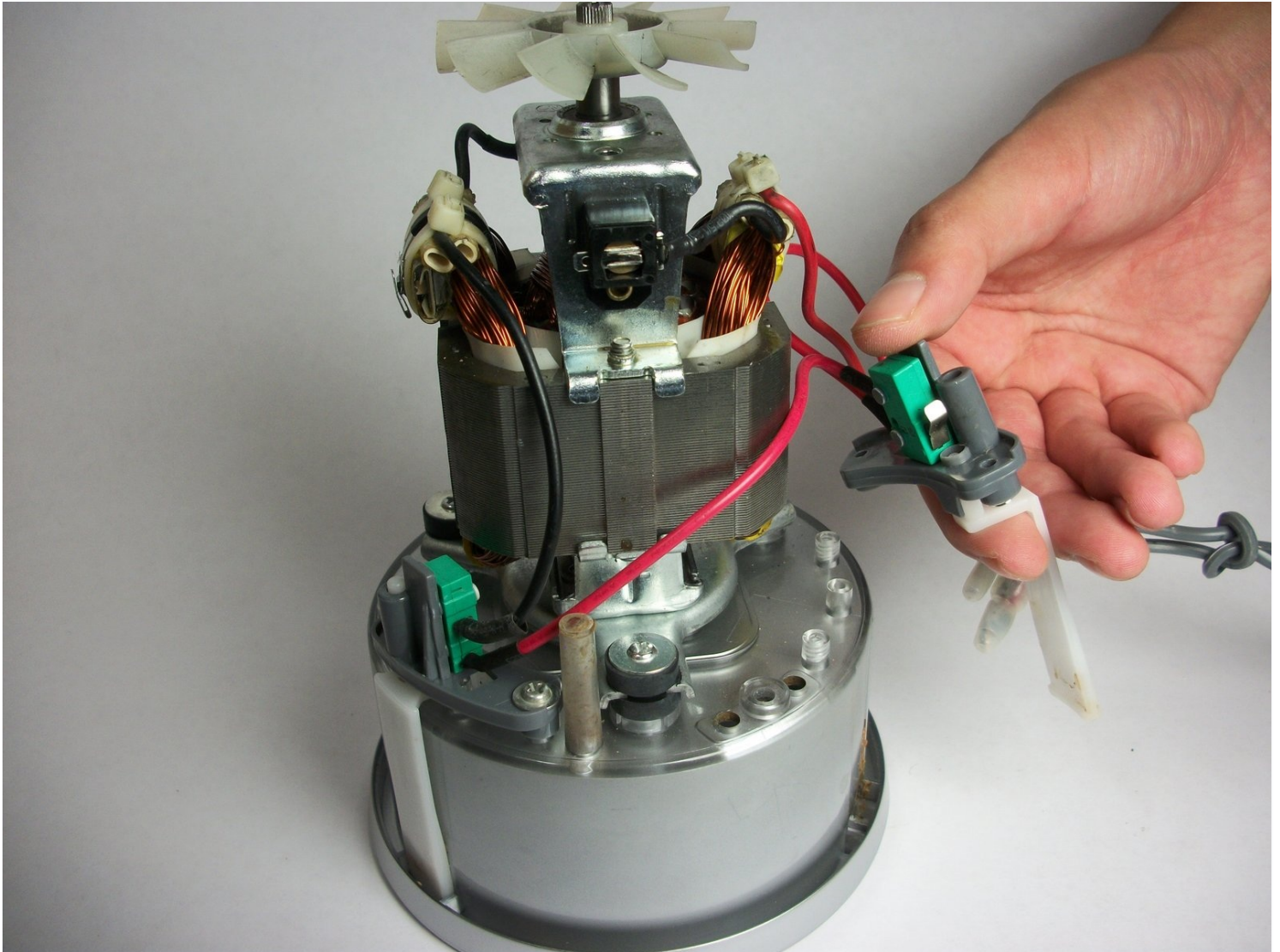




Magic Bullet NutriBullet Activator Replacement

The top of the NutriBullet powerbase contains...

Written By: Angela Wong



INTRODUCTION

The top of the NutriBullet powerbase contains activator switches that are depressed when the blender jar is placed onto the base. When all of the switches are depressed the blender is activated. Depending on the specific model number there may be two (NB-101B) or three (NB-301) activator switches.

This replacement guide will provide instructions on how to replace these activators on a model with 3 switches, but the steps should be reasonably similar on different models.

TOOLS:

Phillips #2 Screwdriver (1)

Step 1 — Curve Base



- Unplug the device from the wall and turn the powerbase upside down.

Step 2



- Use a #2 Phillips Head Screwdriver to unscrew the four 10 mm screws located on the bottom of the power base.

Step 3



- Use slight tension to remove the plastic base from the NutriBullet once all of the screws are removed.

⚠ When reassembling, note the fan located in the center of the powerbase. Make sure the cord does not get caught or frayed by the fan.

Step 4



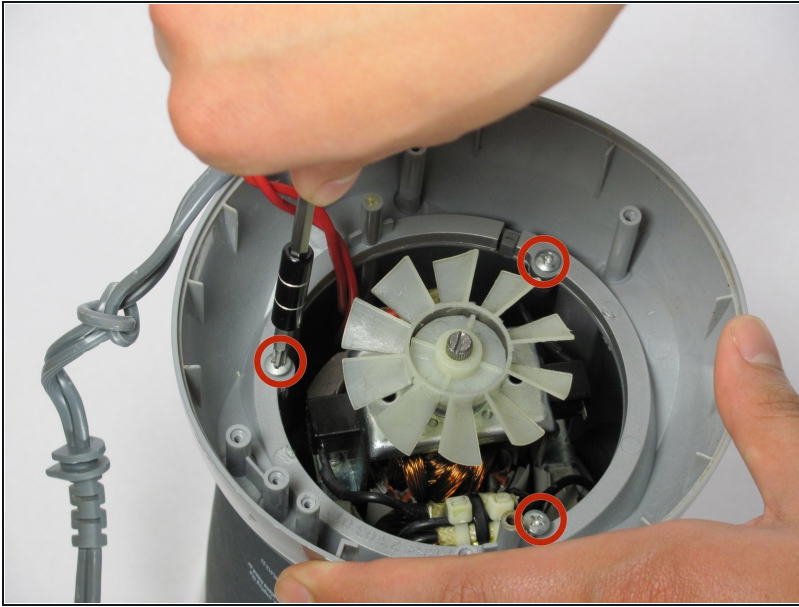
- Lift the power cord to remove it from the side slot on the curved base.

Step 5



- Use a #2 Phillips Head Screwdriver to remove the two 10 mm screws that secure the white bracket down.
- ⓘ The white safety bracket holds the cord down. After removing it, the cord will be loosened.

Step 6



- Use a #2 Phillips Head Screwdriver to remove the three 10mm screws that keep the base in place.

Step 7



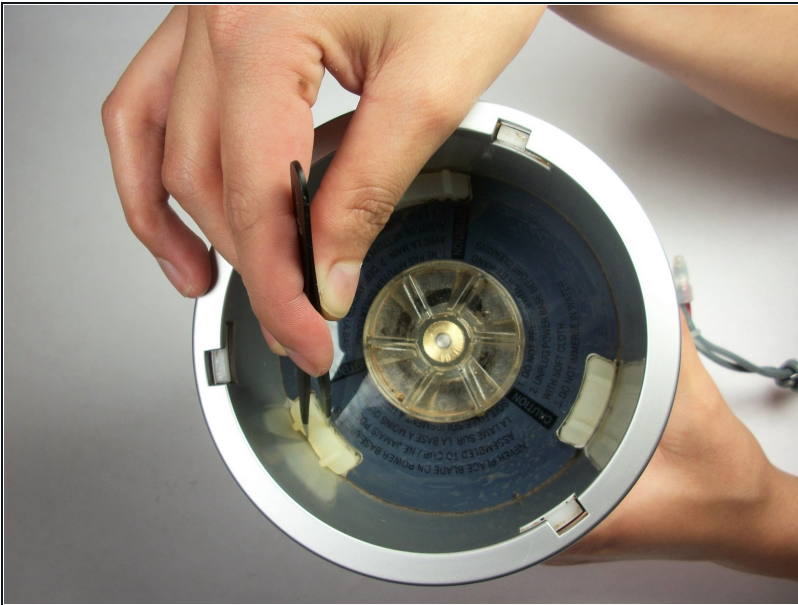
- Use slight tension to remove the curved base by lifting it upward off of the outside casing.

Step 8 — Outside Casing



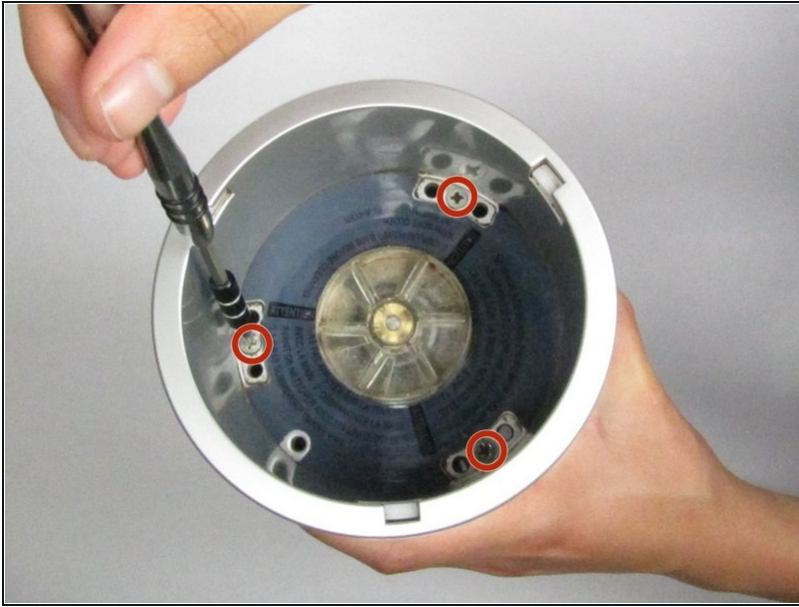
- Wiggle the outside casing upward until it separates from the powerbase.
- ① Hold the ring at the bottom of the powerbase to receive a better grip.

Step 9 — Rubber Covers



- Place the NutriBullet powerbase on the table so that the three rubber screw covers are visible along the bottom of the well. Remove the covers using either [tweezers](#) or your fingers.

Step 10 — Top Screws



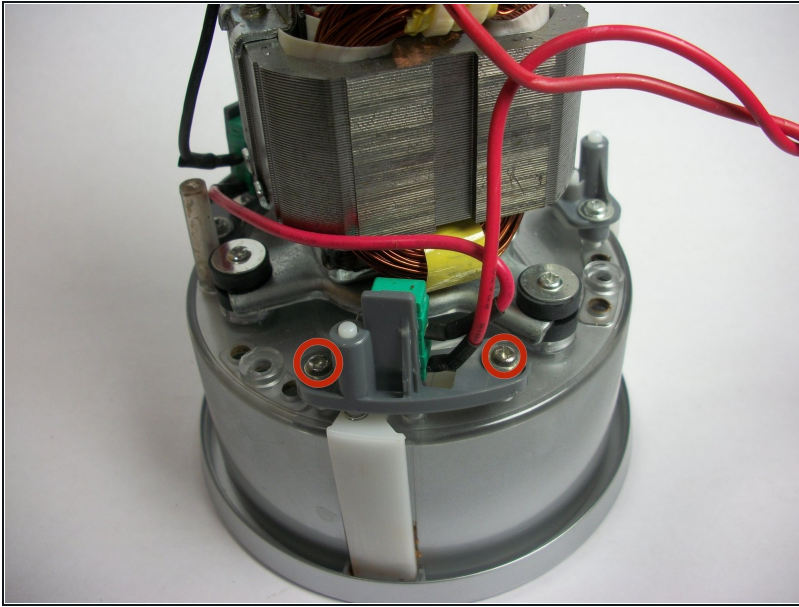
- Remove the three 15mm screws with the Philips Head 2 Screwdriver.

Step 11



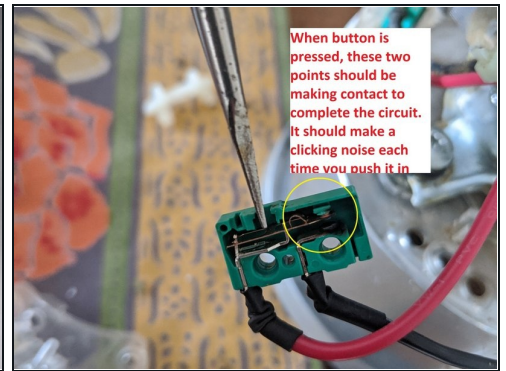
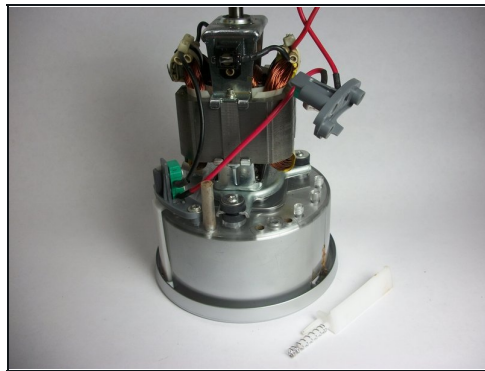
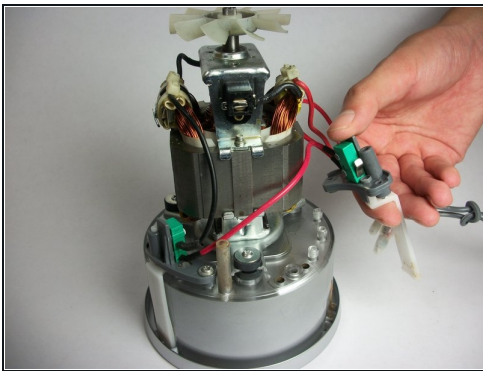
- Turn the NutriBullet powerbase upside down and remove the plastic casing by lifting it up. You may have to wiggle the casing in order to break away any hardened material.

Step 12



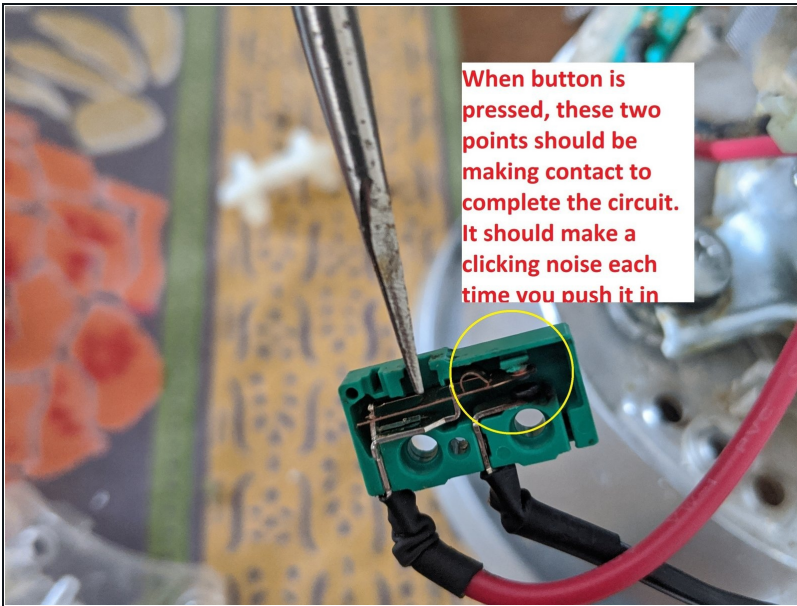
- Determine which activator(s) fail to work by applying pressure to them. Then, remove the two 15mm screws that hold the activators in place by using the Philips Head 2 screwdriver.
- ① Only two of the three activator tabs have green micro switches that actually turn on the motor. Use a circuit tester on the power chord and press the two micro switches simultaneously to see if they complete the circuit. If not, one or both need to be replaced.

Step 13



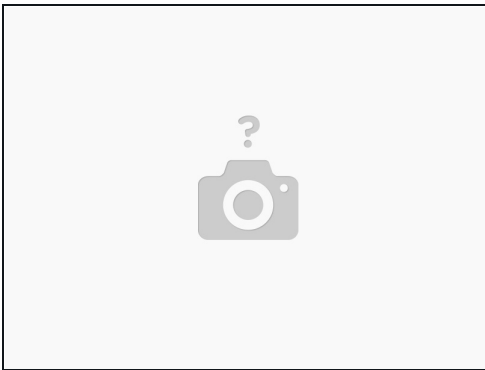
- Using slight tension, pull the loose activator from the slot.
- ① The white plastic activator should fall out and they can now be replaced.

Step 14 — Repairing internal switches



- Open up the green switch. The metal tab and black button will fall out. Fiddle around with the metal switch on the inside to snap it back into place and then reassemble carefully. It should make a clicking noise.

Step 15



- Before reassembling, you should clean up any material that has accumulated on the various parts. Be sure to keep water away from the motor, switches and other electrical components.

To reassemble your device, follow these instructions in reverse order.