



# Samsung WB35F Rear Case Replacement

This guide will help to unscrew the Samsung WB35F camera.

Written By: Sarmad Khan



---

## INTRODUCTION

This guide will help the user to unscrew device to replace different parts of the camera using ph000 screw driver.



### TOOLS:

- [Phillips #000 Screwdriver](#) (1)
  - [iFixit Opening Tools](#) (1)
  - [Tweezers](#) (1)
  - [Phillips #00 Screwdriver](#) (1)
-

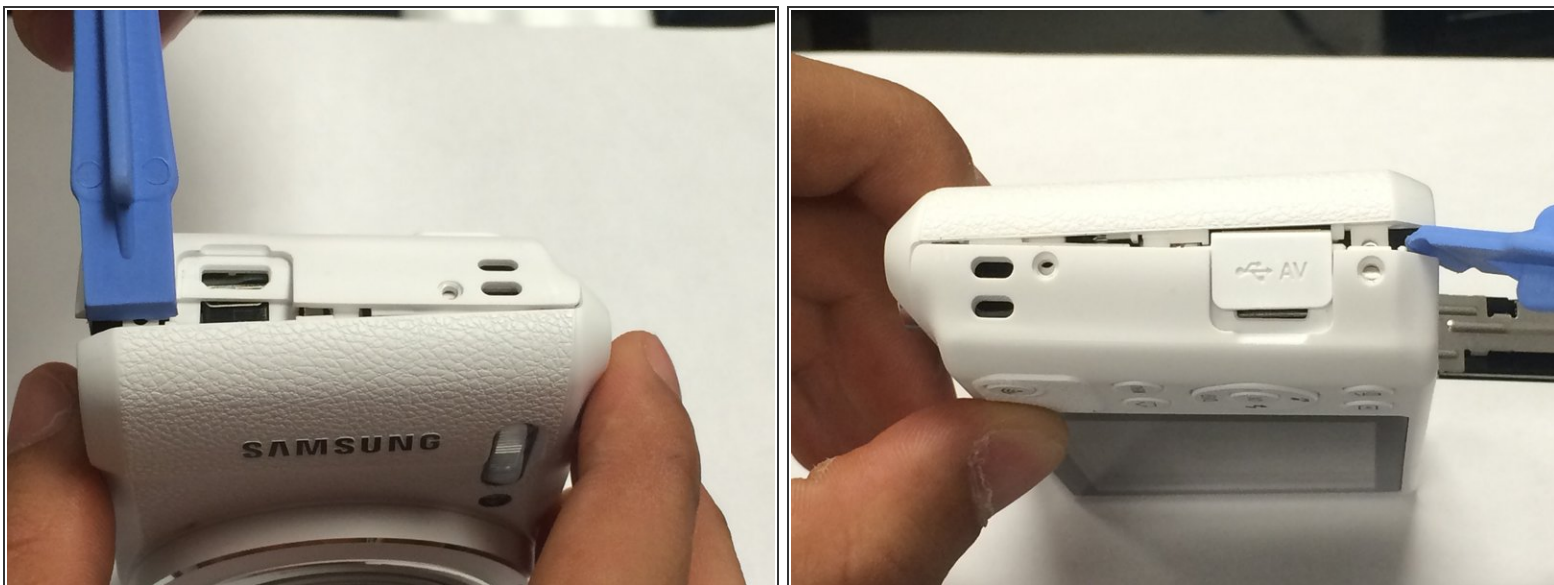
## Step 1 — Rear Case



- The first thing to do will be unscrew all the screws using Phillips #000 Screwdriver.

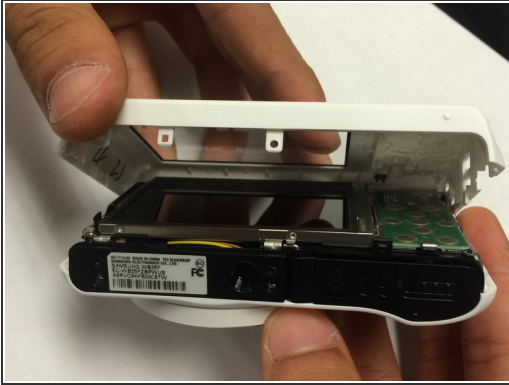
⚠ Keep all the screws in order. Black screws goes under the bottom of camera, and the silver screws goes on the sides and inside of the camera.

## Step 2



- Using the spudger, and plastic opening tool open the casing of camera.

## Step 3



- Once you open the camera case, you will be able to work on any part of the camera.

To reassemble your device, follow these instructions in reverse order.