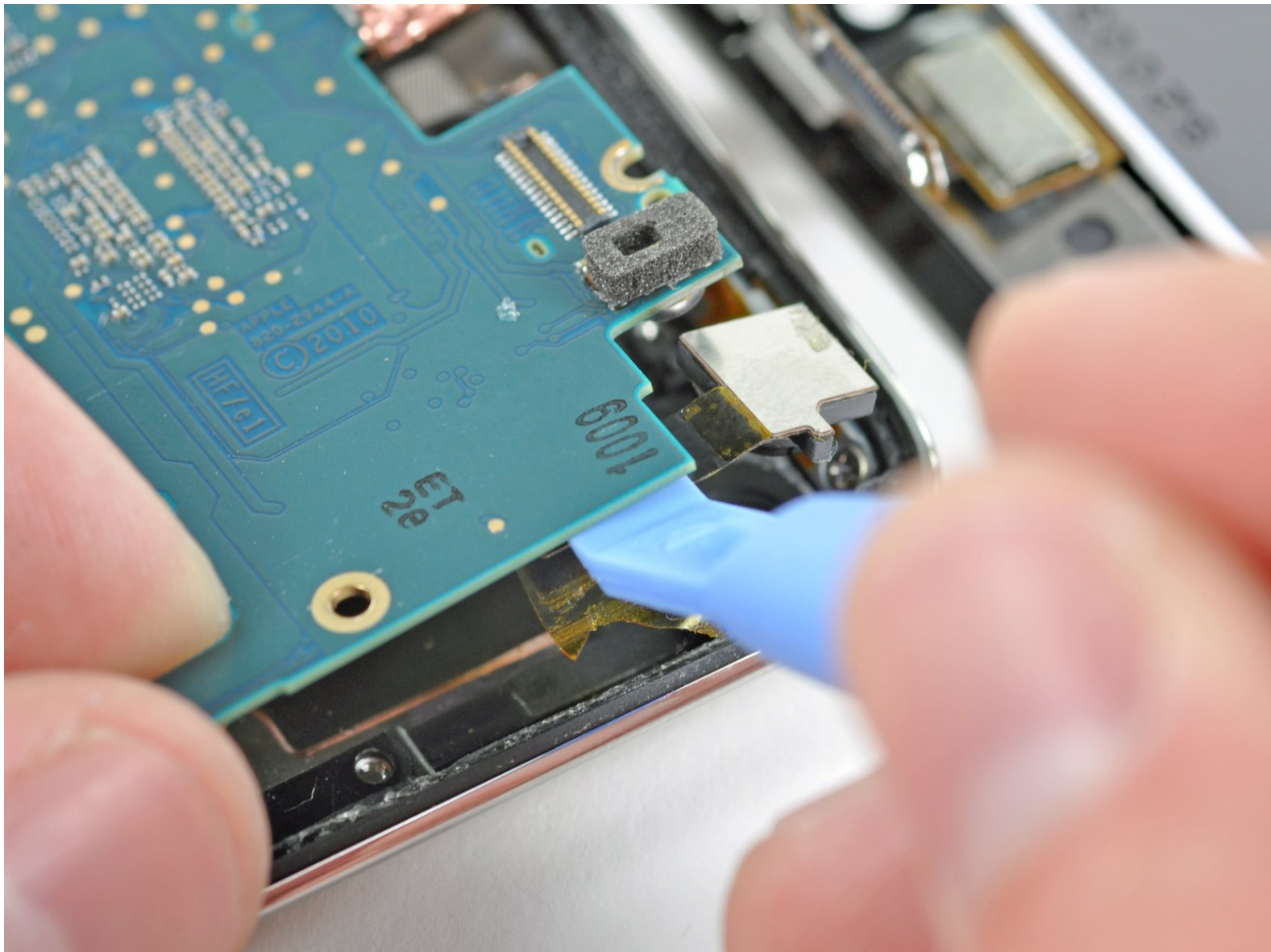




iPod Touch 4th Generation Rear-Facing Camera Replacement

Replace the rear-facing camera in your 4th generation iPod Touch.

Written By: Walter Galan



INTRODUCTION

Use this guide to remove your iPod Touch's rear-facing camera.



TOOLS:

- [Heat Gun](#) (1)
- [Phillips #00 Screwdriver](#) (1)
- [Tweezers](#) (1)
- [iFixit Opening Tools](#) (1)



PARTS:

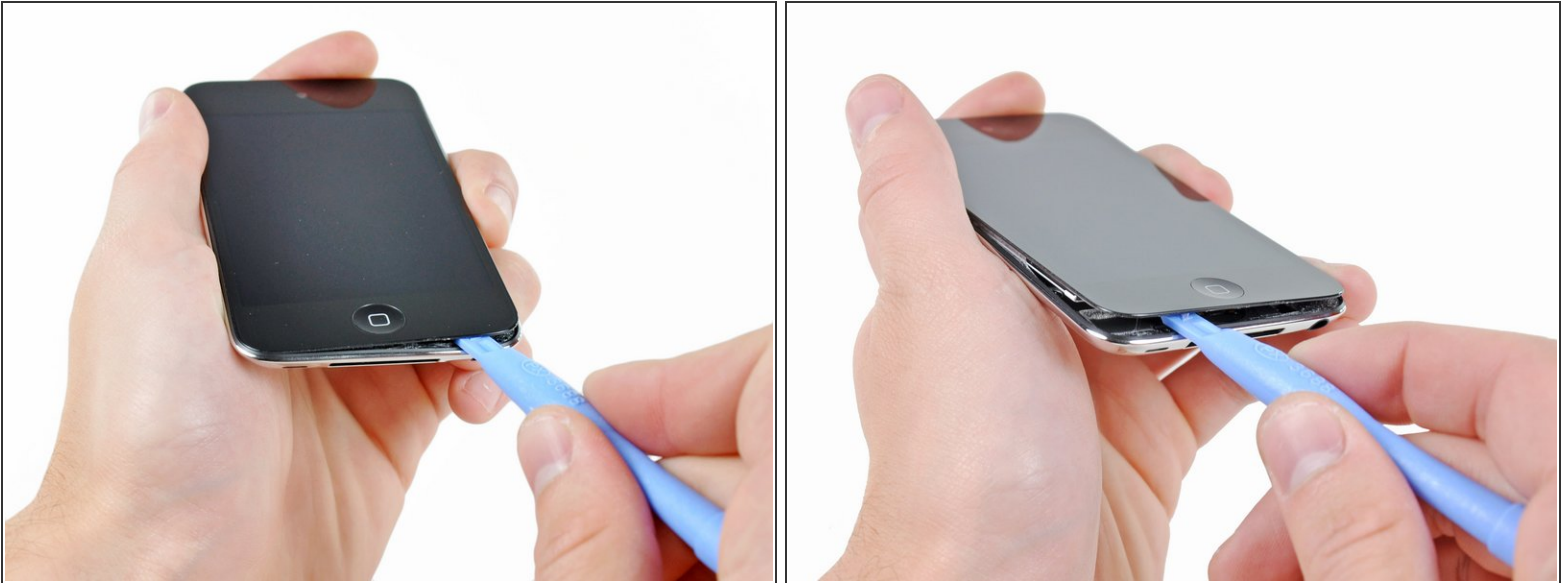
- [iPod touch 4th Gen Rear Camera](#) (1)


Step 1 — Front Panel



- ⓘ The iPod Touch 4th Generation front panel is attached to the rear case by adhesive. The use of a heat gun to soften the adhesive is highly recommended.
- With the heat gun set on "low", begin heating the lower portion of the Touch near the home button.
- ★ It is suggested to heat the desired portion in a circular motion pattern to evenly dissipate the amount of heat throughout the device.


Step 2



 Beware, as the Touch will be very hot. It may be helpful to hold it with a towel while prying.

- Insert the edge of an iPod opening tool between the front glass panel and the plastic bezel near the home button.

 Do not try to pry between the plastic bezel and the steel rear case.

- Pry the bottom edge of the front panel upward, being careful not to bend the glass excessively.
-  If it is too difficult to pry up the front panel assembly, reheat it and try again.

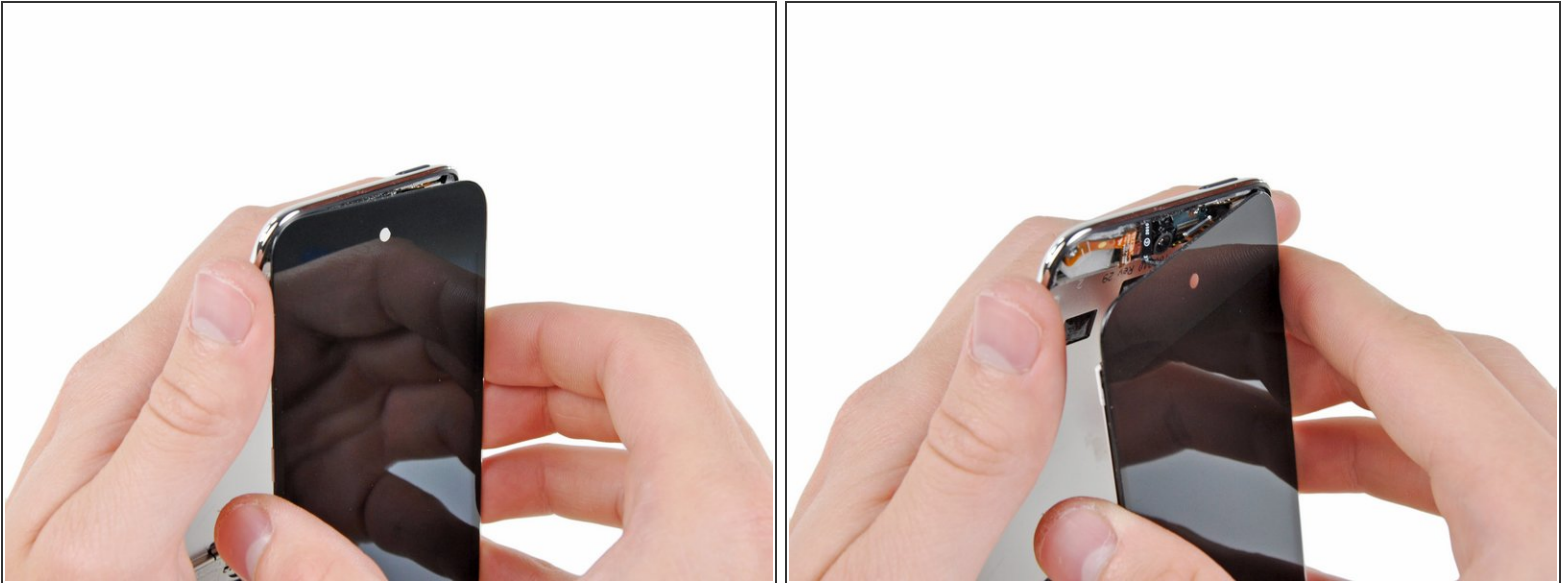
Step 3





- When there is enough room to grab the bottom edge of the front panel, lift it away from the body of the Touch to peel up the adhesive along its left and right edges.

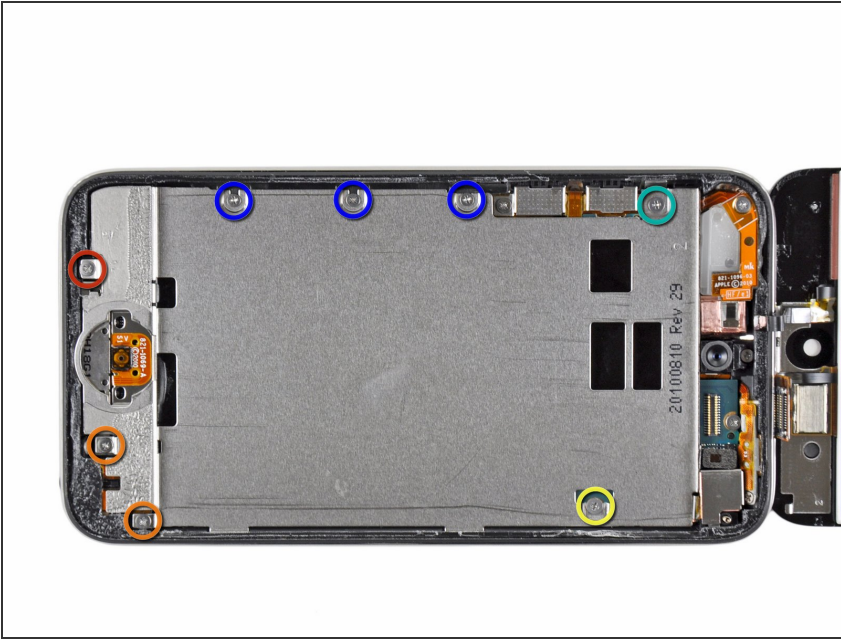
⚠ If the adhesive is too difficult to separate, use a heat gun to soften it before proceeding.

Step 4



-  Due to the construction of the 4th generation Touch, the digitizer cable cannot be disconnected until the logic board is removed. Use extreme caution when handling the front panel assembly, as it is attached to the rest of the Touch by the very delicate digitizer cable.
-  Also, the display data cable is very short and is connected to the logic board near the top of the front panel assembly. If it does not become disconnected while freeing the top edge of the front panel assembly, be sure to disconnect it with an iPod opening tool before rotating the front panel assembly out of the Touch.
- Carefully pull the top of the front panel assembly away from the adhesive holding it to the Touch, minding the short digitizer cable connecting the two components.

Step 5



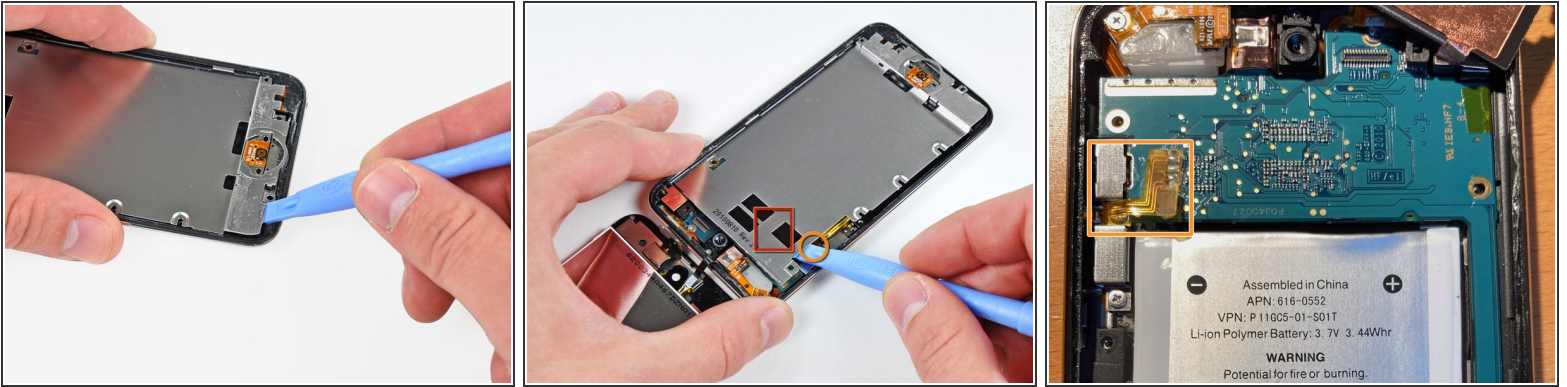
- Remove the following eight Phillips #00 screws:
 - One 3.5 mm Phillips screw
 - Two 3.0 mm Phillips screws
 - One 2.3 mm Phillips screw
 - One 2.4 mm Phillips screw
 - Three 2.0 mm Phillips screws

Step 6



- Use the edge of an iPod opening tool to pry the thin steel cover up from the rear-facing camera.
- ⓘ Note the small spring located near the bezel next to the camera (highlighted in yellow).
- Remove the steel cover from the iPod.

Step 7



- Insert the edge of an opening tool under the steel mid plate near the bottom left corner of the Touch.
 - Slowly pry upward to separate the plate from the adhesive securing it to the plastic inner case.
 - If the plate is still attached to the logic board, re-warm the area to loosen the adhesive, then slowly separate the plate from the logic board using the opening tool.
 - There is a thin, fragile ribbon cable underneath the plate. As you pry the plate up, be very careful not to rip the cable.
- ⚠ This cable may stick to the plate and will tear very easily if you're not careful. Work slowly and be careful not to strain the cable.

Step 8



- Slightly tilt the steel mid plane to dislodge it from the rear case.
- ⚠ Be careful not to tear the piece of copper tape connecting the rear-facing camera to the steel mid plane.
- Lift the steel mid plane up off the rear case and peel off the piece of copper tape stuck to the rear-facing camera.

Step 9 — Upper Logic Board



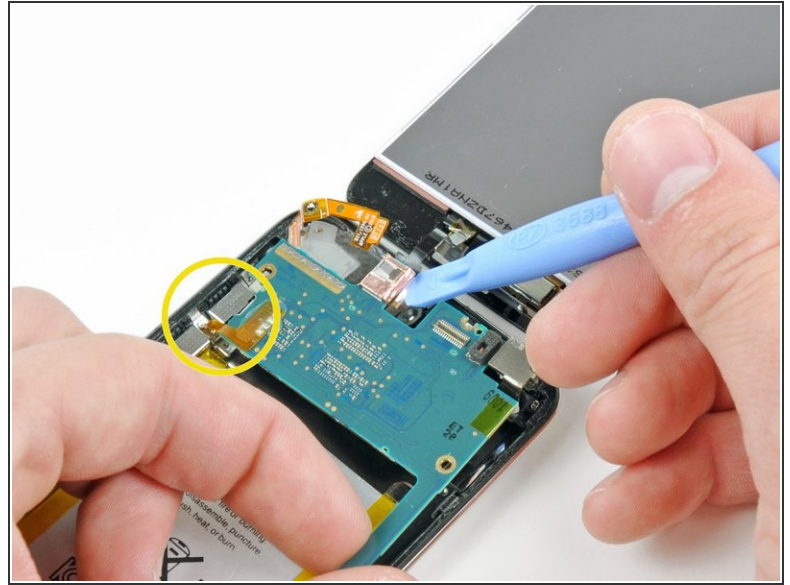
- Remove the following three screws near the top edge of the logic board:
 - One 2.0 mm Phillips screw
 - Two 2.3 mm Phillips screws

Step 10



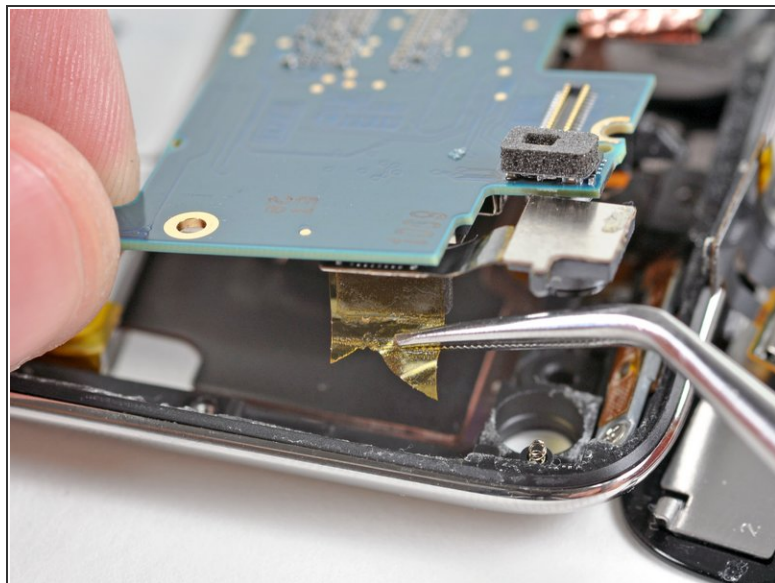
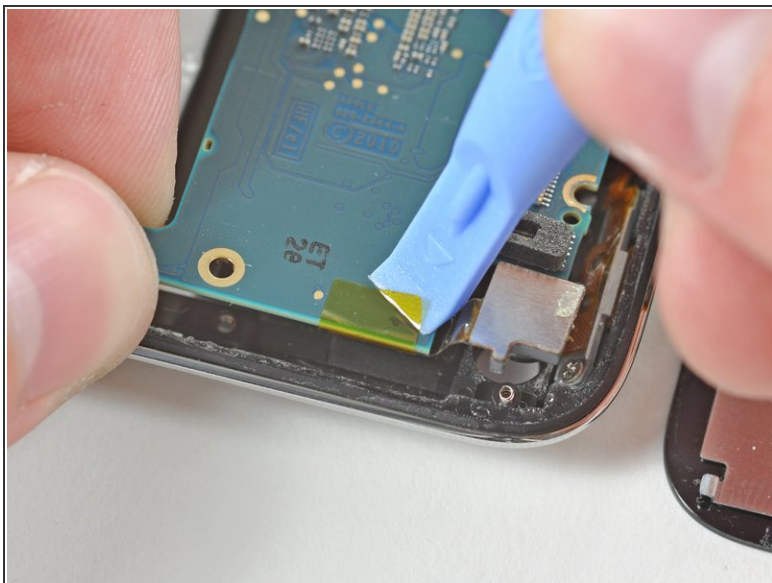
- Use the edge of an iPod opening tool to gently pry, but not remove, the rear-facing camera away from the rear case.
- ⚠ Do **not** attempt to remove the rear-facing camera yet.

Step 11



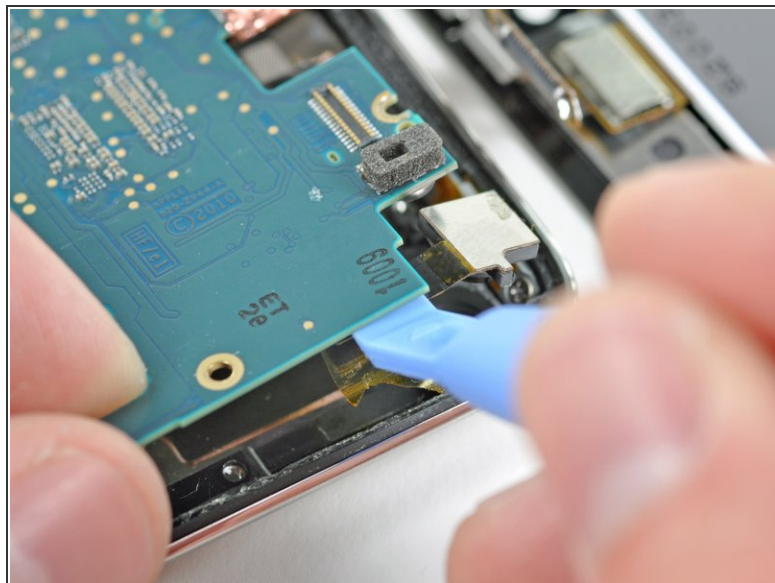
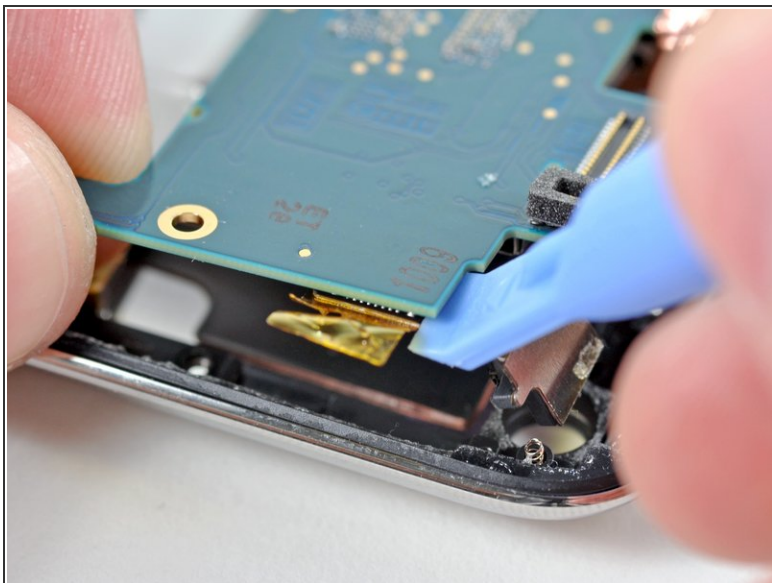
- Use an iPod opening tool to slightly lift the edge of the logic board next to the battery enough to grab it with your other hand.
- ⚠ Do not excessively bend the logic board, as it is very thin and fragile.
- Be very careful not to lift too much as the volume control ribbon cable is still connected and will tear **very** easily.
- While gently lifting the logic board with one hand, use an iPod opening tool to lift the logic board near the copper tape at the logic board's top edge.
- The logic board will be lifted adequately when the last display assembly connector has cleared the top edge of the rear case.

Step 12 — Rear-Facing Camera



- Use an iPod opening tool to peel the edge of the yellow kapton tape that covers the rear-facing camera and the logic board.
- Continue peeling the tape from the bottom of the rear-facing camera connector.
- Use a pair of tweezers to grasp and remove the tape from the top of the rear-facing camera connector.

Step 13



- Use the edge of an iPod opening tool to pry the rear-facing camera connector away from its socket on the logic board.
- Remove the rear-facing camera from the Touch.

To reassemble your device, follow these instructions in reverse order.