



PlayStation 3 Lower Case Replacement

Use this guide to replace your PlayStation 3's...

Written By: Walter Galan



INTRODUCTION

Use this guide to replace your PlayStation 3's black plastic lower case.



TOOLS:

- [Phillips #1 Screwdriver](#) (1)
- [Spudger](#) (1)
- [TR10 Torx Security Screwdriver](#) (1)



PARTS:

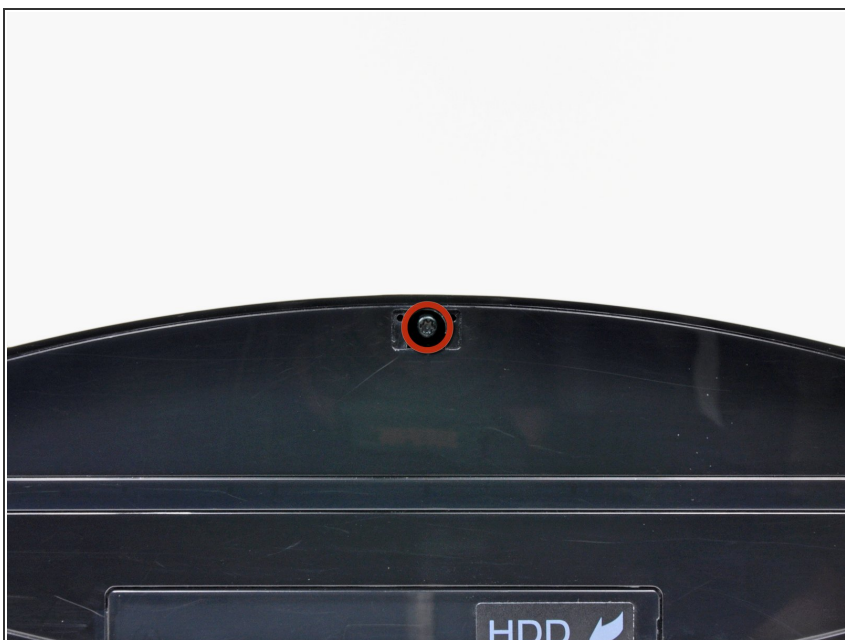
- [Sony PlayStation 3 Screw Set A](#) (1)

Step 1 — Smart Plate



- Use the tip of a spudger to remove the black rubber screw cover from the side of the PS3.
- ⓘ The screw cover may be underneath a warranty sticker. This sticker will change appearance, and show "VOID" after it has been removed.

Step 2



- Remove the single 8.5 mm T10 Security Torx screw from the smart plate.

Step 3



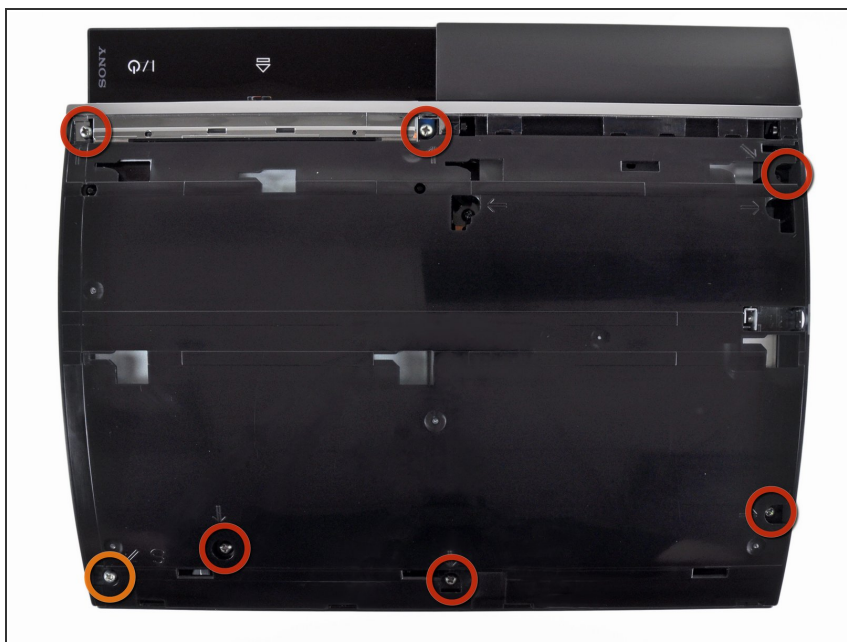
- Pull the smart plate toward the hard drive bay, then lift it off the body of the PS3.

Step 4



⚠ Be sure to keep track of the small metal bracket loosely held in the top cover, if equipped.

Step 5 — Top Cover



- Remove the following seven screws:
 - Six 52 mm Phillips screws
 - One 30 mm Phillips screw

Step 6



- Lift the top cover from its rear edge and rotate it toward the front of the PS3.
- Remove the top cover.
- There is a plastic hook located in a hole on the top back right hand side corner. Carefully push the plastic hook a bit from the rear of the machine with a spudger to release the rear right of the casing.

Step 7 — Blu-ray Disc Drive



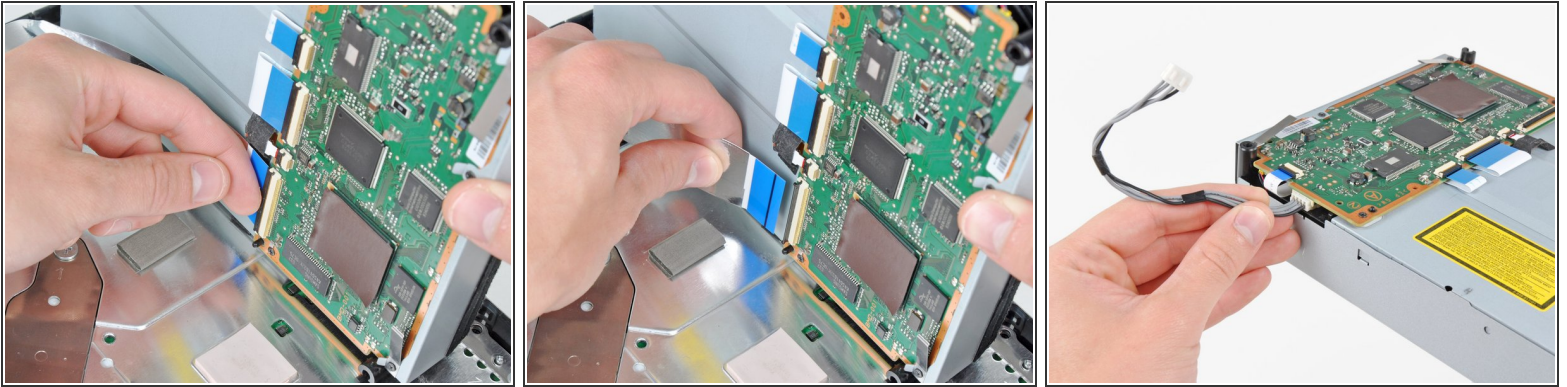
- Disconnect the Blu-ray power cable from the motherboard.
- ⓘ Pull the connector straight up and out of its socket.

Step 8



- Lift the Blu-ray drive from the edge nearest the power supply and rotate it away from the chassis enough to access its ribbon cable.

Step 9

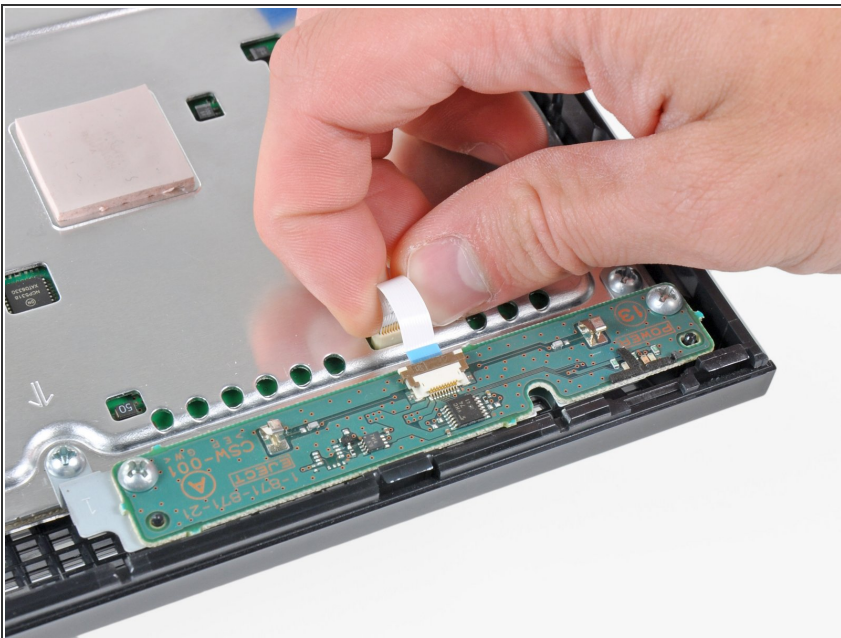


- Use your fingernail to flip up the retaining flap on the Blu-ray ribbon cable socket.

⚠ Be sure you are prying up on the retaining flap, **not** the socket itself.

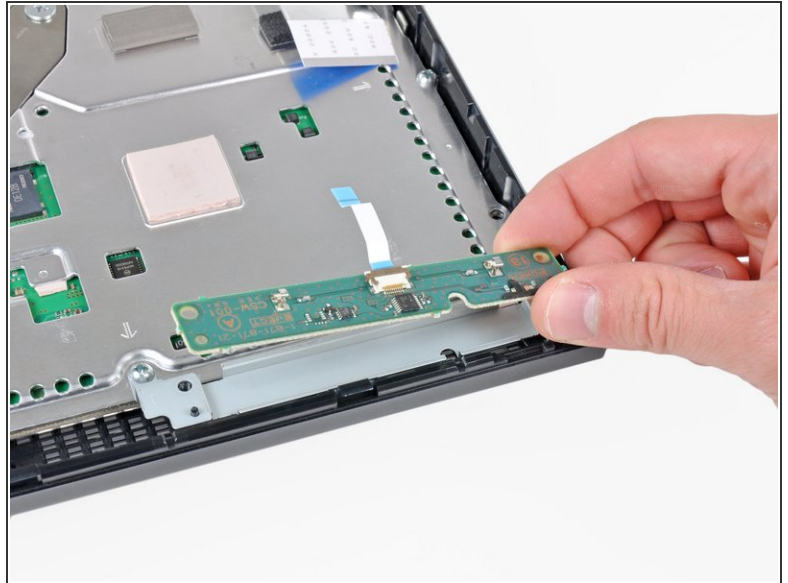
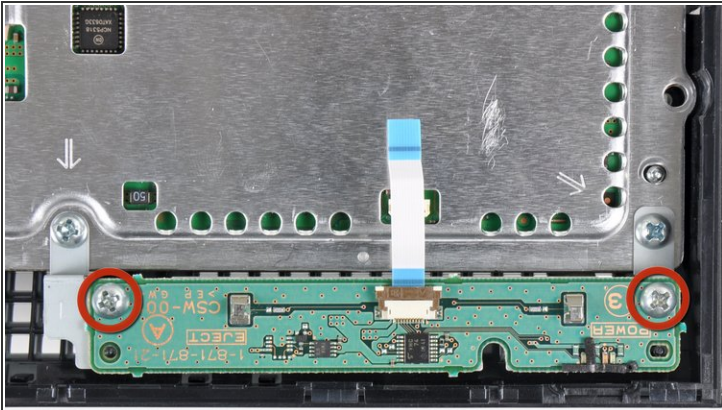
- Pull the ribbon cable out of its socket.
 - Remove the Blu-ray drive from the PS3.
- ☑ If replacing the Blu-ray drive, transfer the power cable to your new drive.

Step 10 — Motherboard Assembly



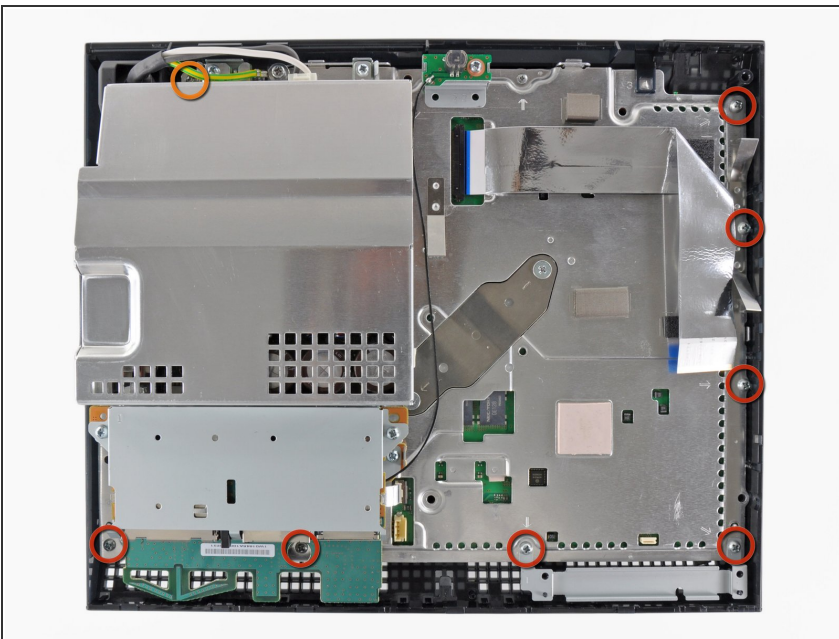
- Pull the control board ribbon cable straight up and out of its socket on the motherboard.

Step 11



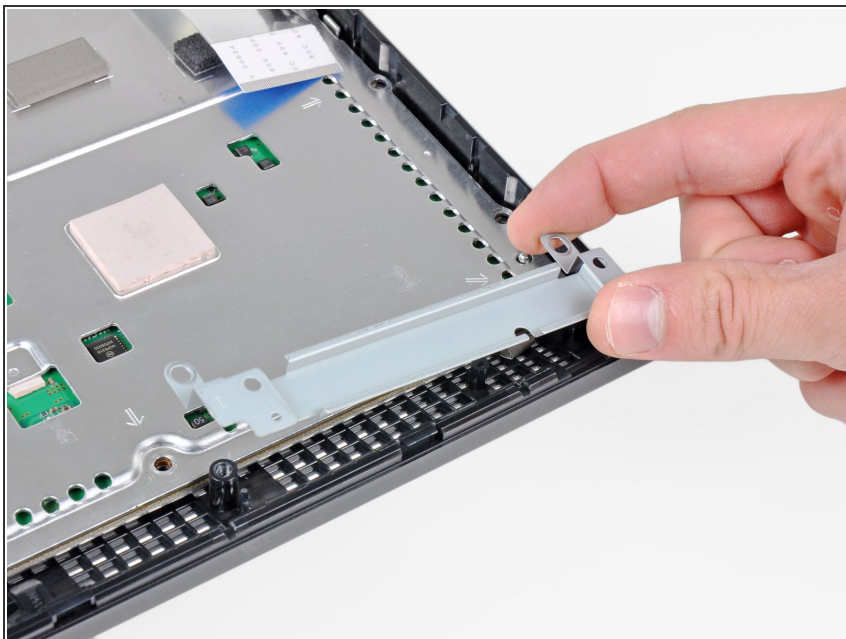
- Remove the two 12 mm Phillips screws securing the control board to the lower case.
- Remove the control board and its attached cable from the PS3.

Step 12



- Remove the following eight screws securing the motherboard assembly to the lower case:
 - Seven 12 mm Phillips screws (ph2)
 - One 30 mm Phillips screw

Step 13



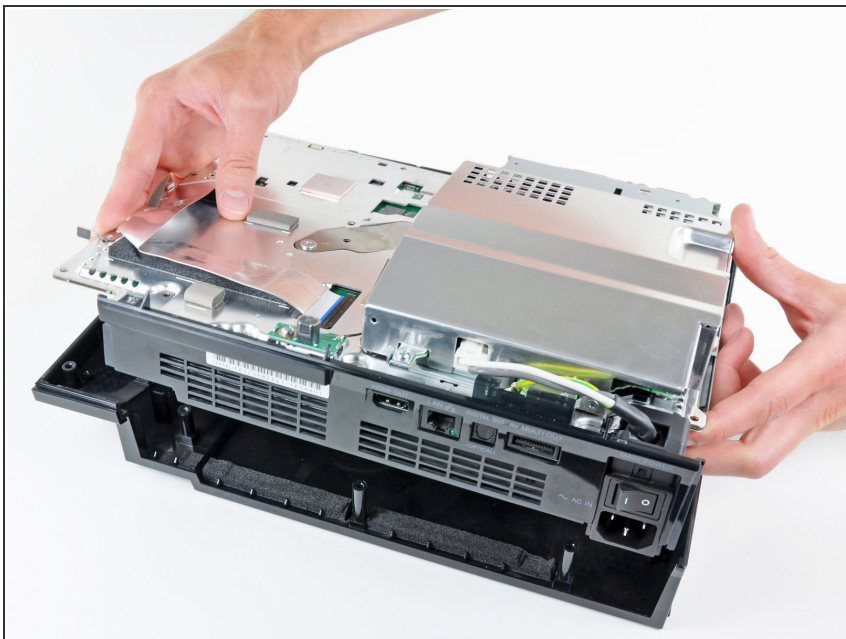
- Remove the control board bracket.

Step 14



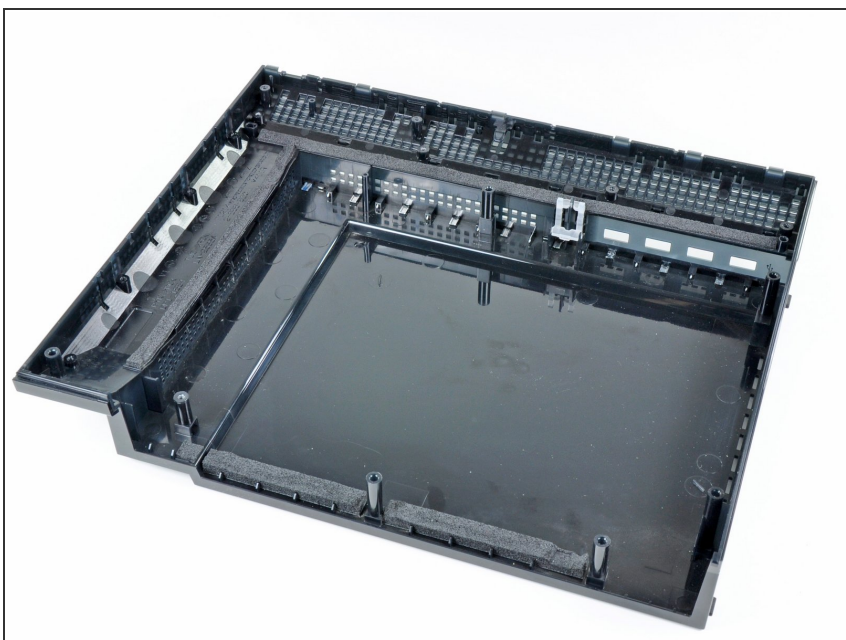
- Use the flat end of a spudger to pry the hard drive bay cover away from the lower case.
- Remove the hard drive bay cover.

Step 15



- Lift the motherboard assembly out of the lower case.

Step 16 — Lower Case



- Lower case remains.

To reassemble your device, follow these instructions in reverse order.