



# Polaroid i533 Outer Case Replacement

This guide will allow you to remove the outer case of the camera. This will allow you to replace it or get to parts inside it.

Written By: Terichael Office



 **TOOLS:**

- [iFixit Opening Tools](#) (1)
- [Phillips #00 Screwdriver](#) (1)

## Step 1 — Outer Case



- Unscrew and remove the four screws from the left side of the camera (from the screen's view)

## Step 2



- Unscrew and remove the three screws from the bottom of the camera

### Step 3



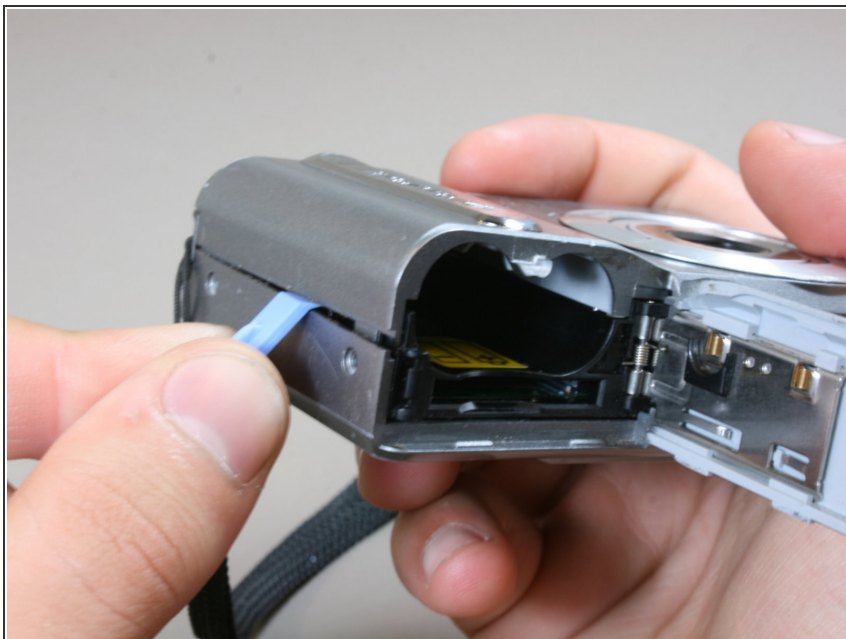
- Unscrew and remove the two screws from the right side of the camera.

### Step 4



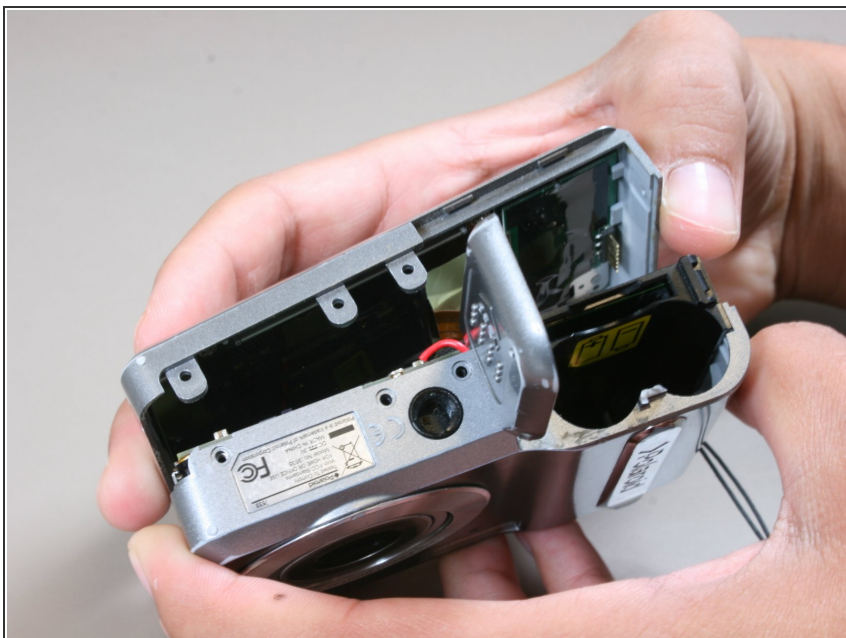
- Open the battery flap and remove the batteries.
- Keep the battery flap open.

## Step 5



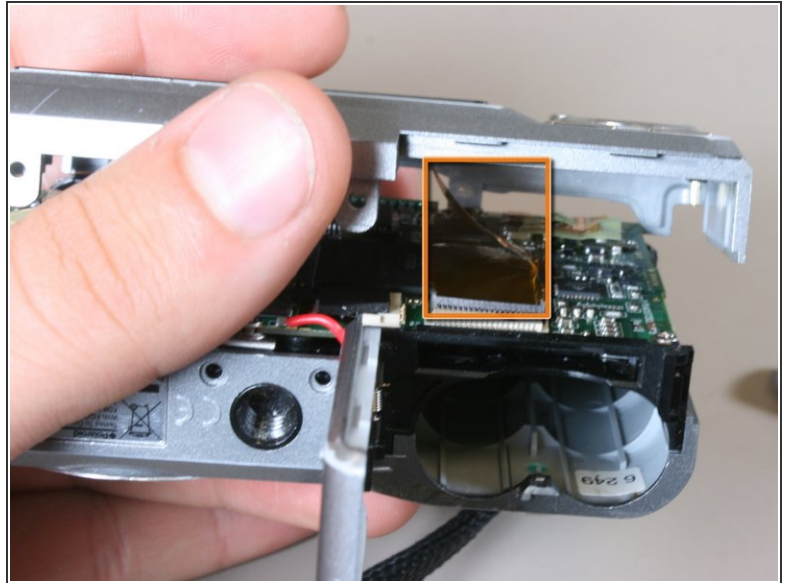
- Use a spudger to gently separate the two halves of the camera's outer casing.

## Step 6



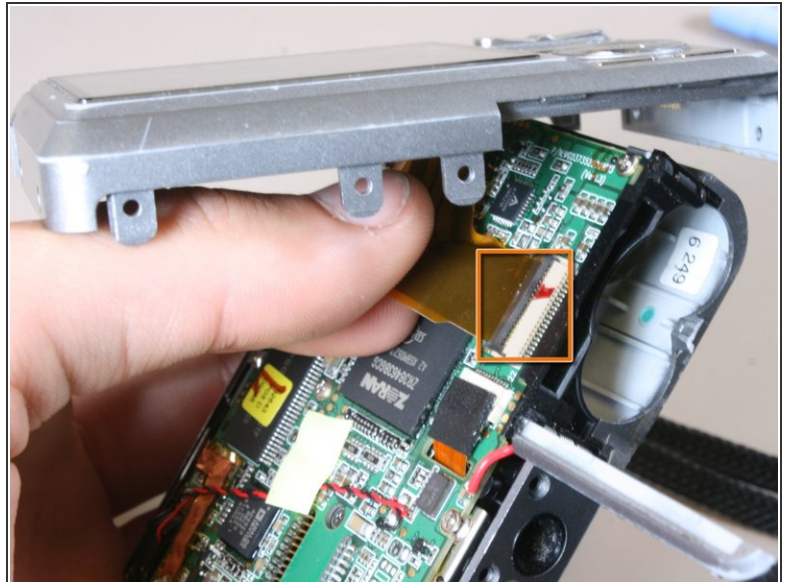
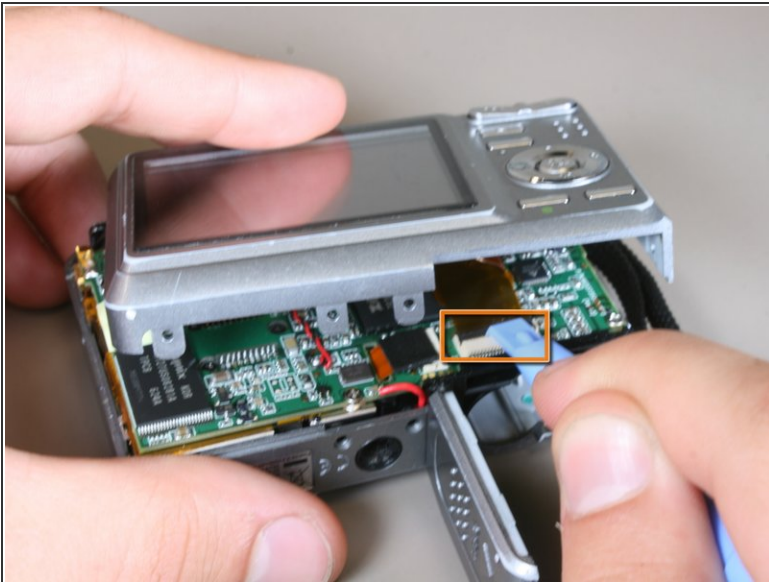
- Gently pull the half of the case with the screen (the back half) from the rest of the camera.
- ⚠ Be sure not too pull to hard. The screen is still attached to the motherboard. If you pull too hard you will rip it.

## Step 7



- The back half (the half with the screen on it) should now be separate from the rest of the camera, but still attached by the ribbon.

## Step 8



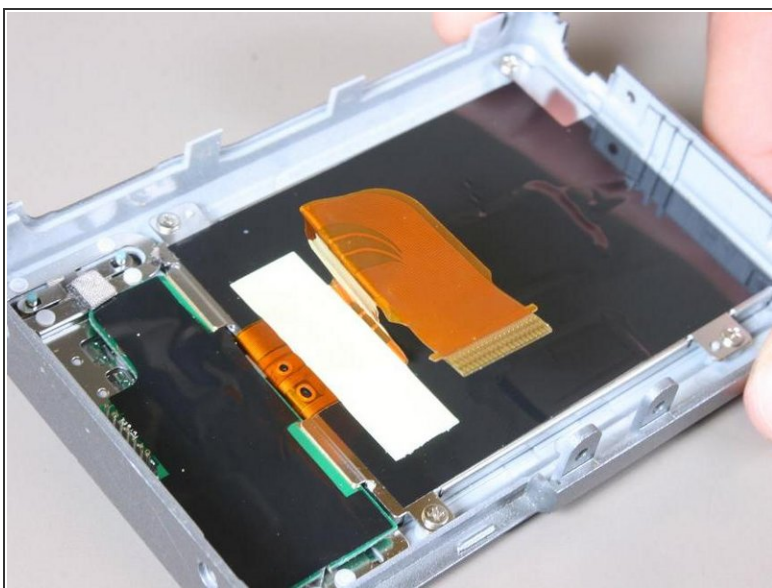
- Use a spudger to lift the black flap that clamps the ribbon towards you.
- When the black flap is open it will be straight up. (like in the second picture)

## Step 9



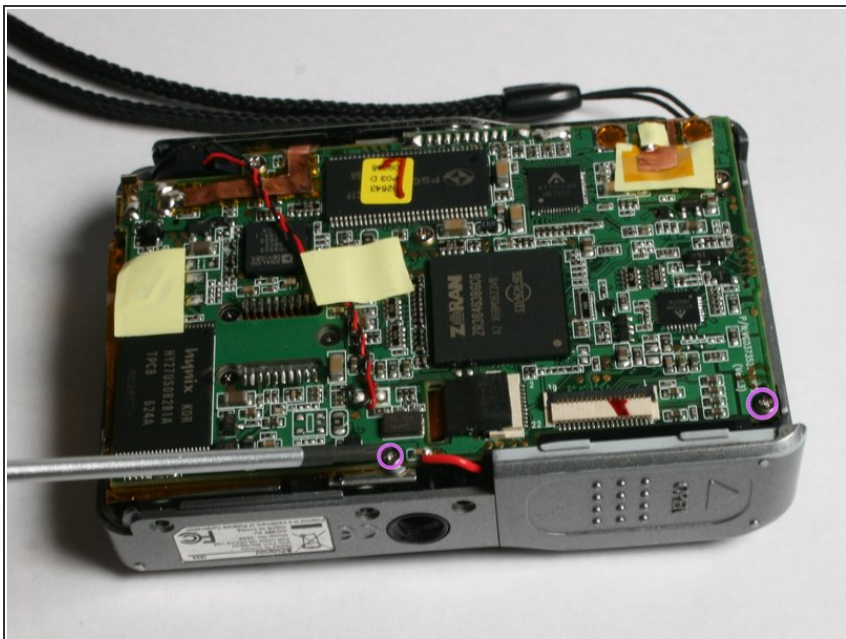
- Now that the black flap is open, gently pull the ribbon out.
- You should now have the back half of the camera completely separate from the rest of the camera.

## Step 10



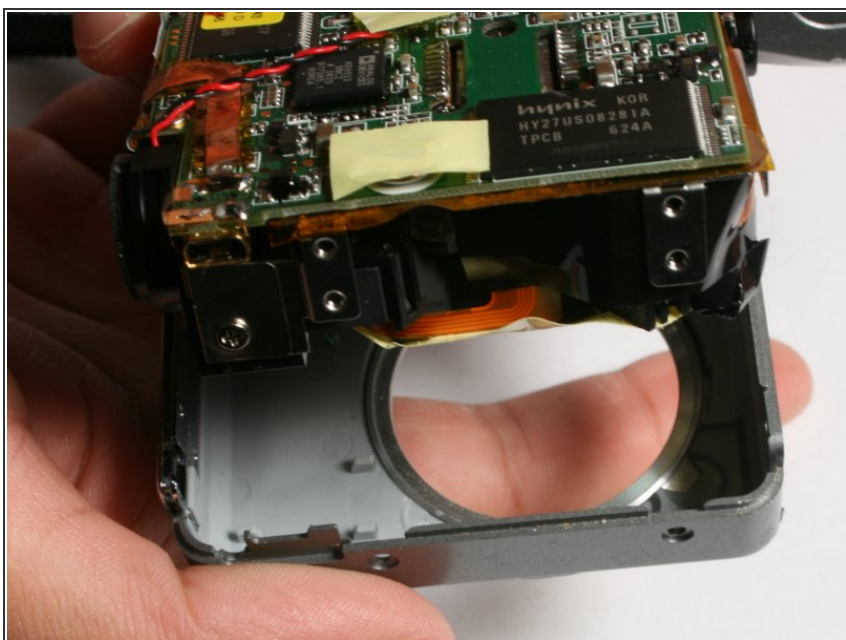
- This is what the back half of the camera should look like.
- This is what the rest of the camera will look like.

## Step 11



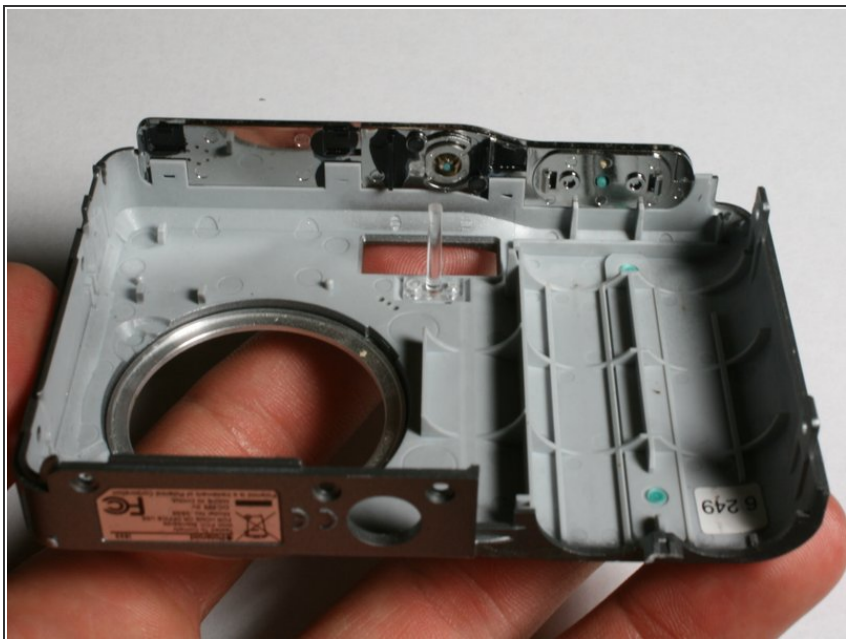
- Unscrew and remove two screws from the logic board.

## Step 12



- Pull the front half off of the logic board.

## Step 13



- This will be the front half of the outer case.

To reassemble your device, follow these instructions in reverse order.