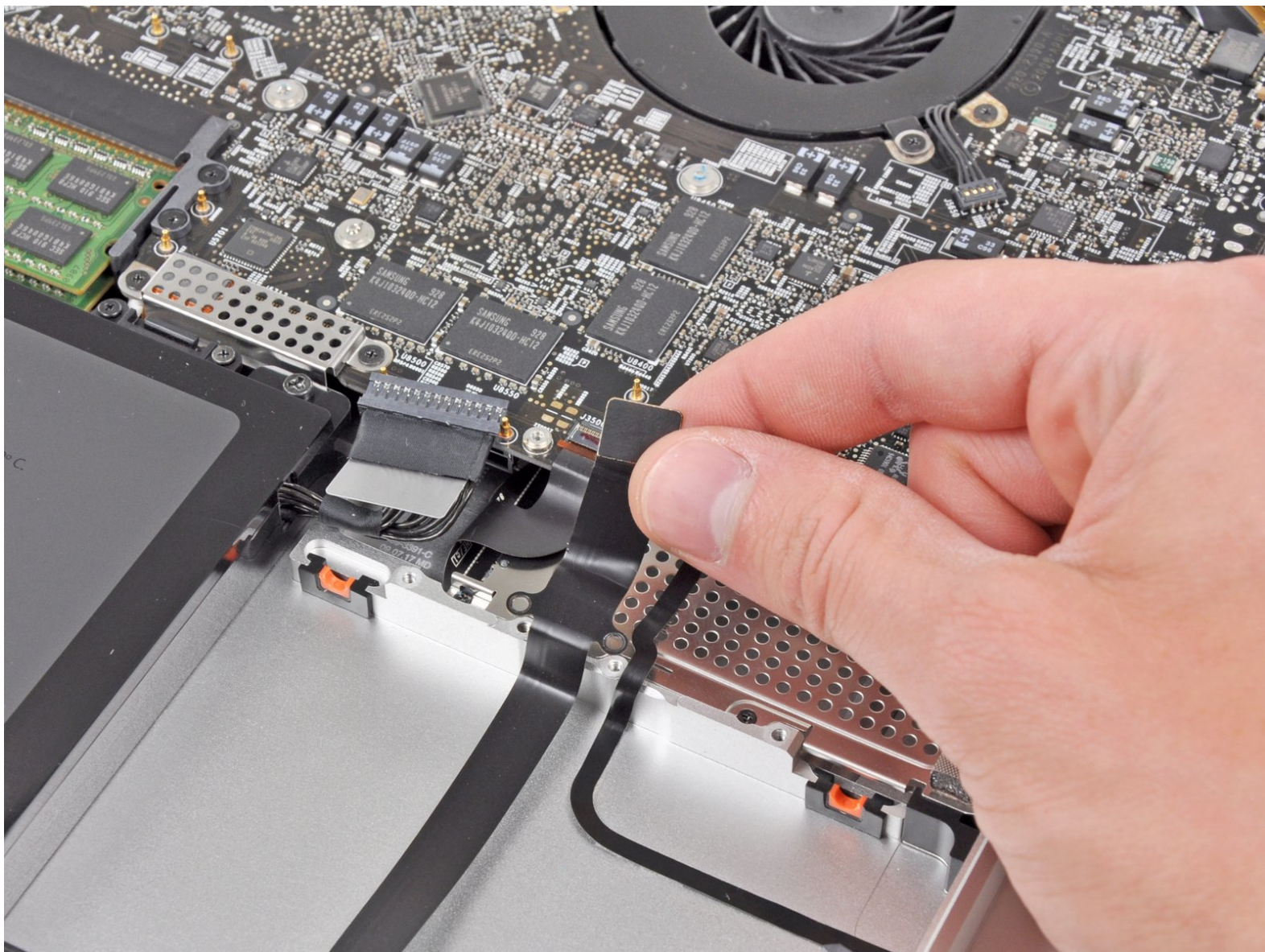




MacBook Pro 17" Unibody Hard Drive Cable Replacement

Replace a broken hard drive cable.

Written By: Andrew Bookholt



INTRODUCTION

Use this guide to replace a hard drive cable that is torn or has broken connectors.



TOOLS:

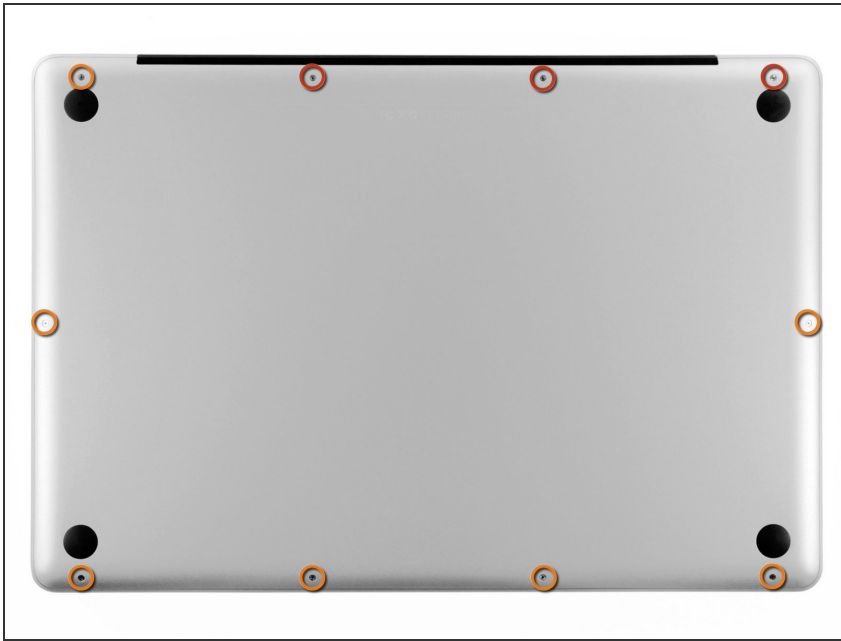
- [Phillips #00 Screwdriver](#) (1)
- [Spudger](#) (1)



PARTS:

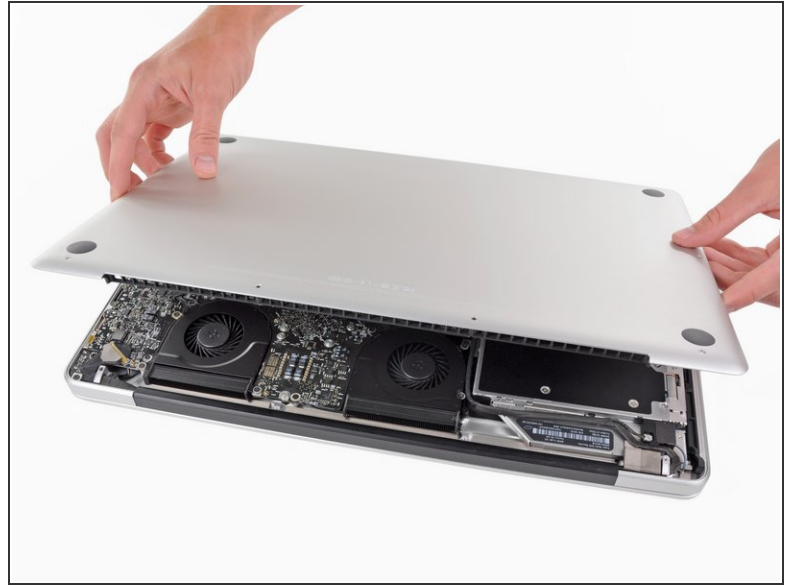
- [MacBook Pro 17" Unibody \(Early 2009 to Mid 2010\) Hard Drive Cable](#) (1)
- [MacBook Pro 17" Unibody \(Early 2011\) Hard Drive Cable](#) (1)

Step 1 — Lower Case



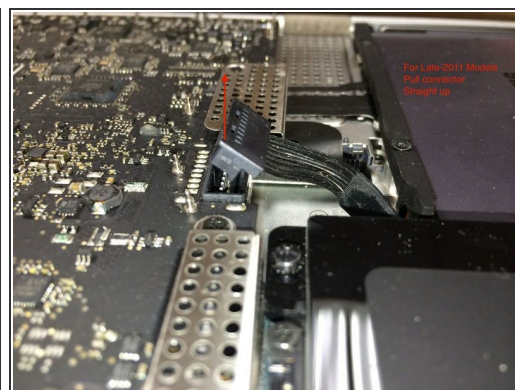
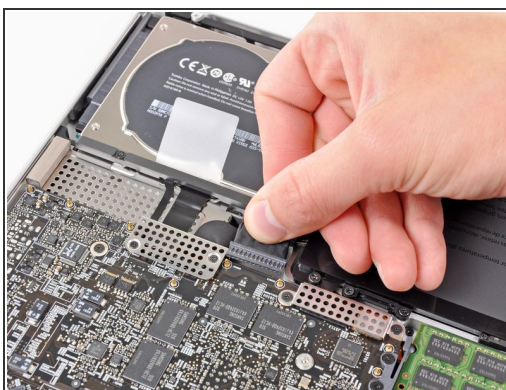
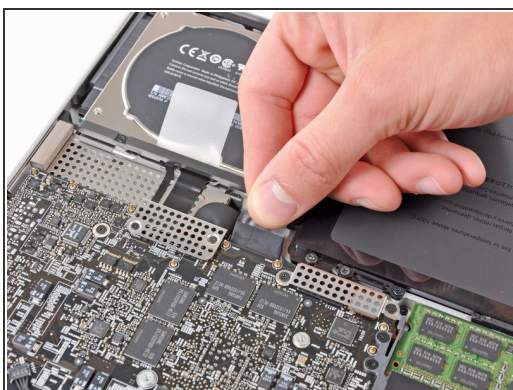
- Remove the following ten screws securing the lower case to the upper case:
 - Three 13.5 mm Phillips screws.
 - Seven 3 mm Phillips screws.

Step 2



- Wedge your fingers between the lower case and the vent, and lift upward to release the two clips holding the lower case to the upper case.
 - ☑ During reassembly, carefully align the lower case and then press it firmly until both clips engage.
- Remove the lower case.

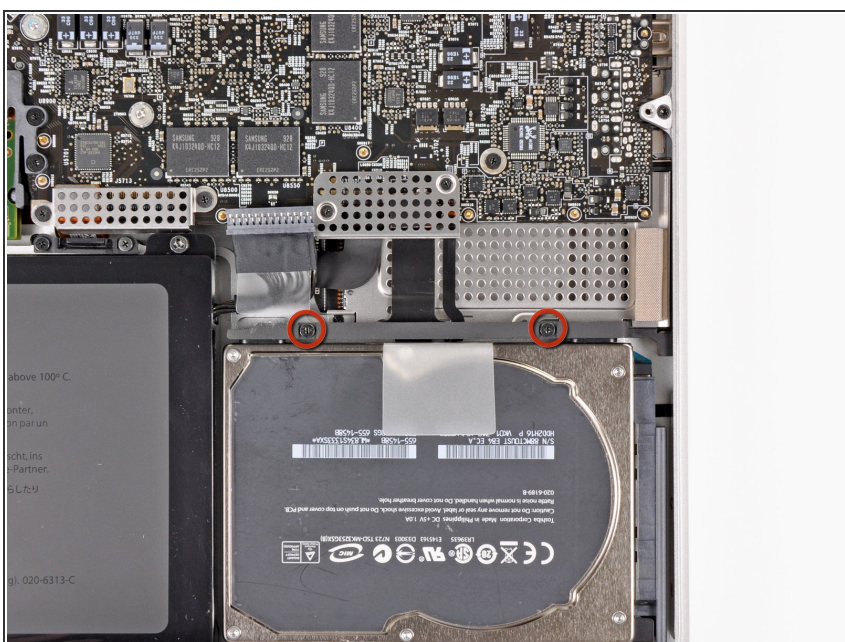
Step 3 — Battery



⚠ Whenever working near the logic board, it is always wise to first disconnect the battery to avoid short circuits.

- If present, grab the plastic tab attached to the battery connector and pull it toward the front edge of the device. For Late-2011 models the battery connector will not have a tab and is simply a plug that inserts straight down into the motherboard--to remove pry the plug straight up.
- i** If the plastic tab is missing, use a spudger to pry the connector up from its socket.
- ✦** Pull the tab parallel to the face of the logic board.

Step 4 — Hard Drive



- Remove the two Phillips screws securing the hard drive bracket to the upper case.
- i** These screws are captive to the hard drive bracket.

Step 5



- Remove the hard drive bracket from the upper case.

Step 6



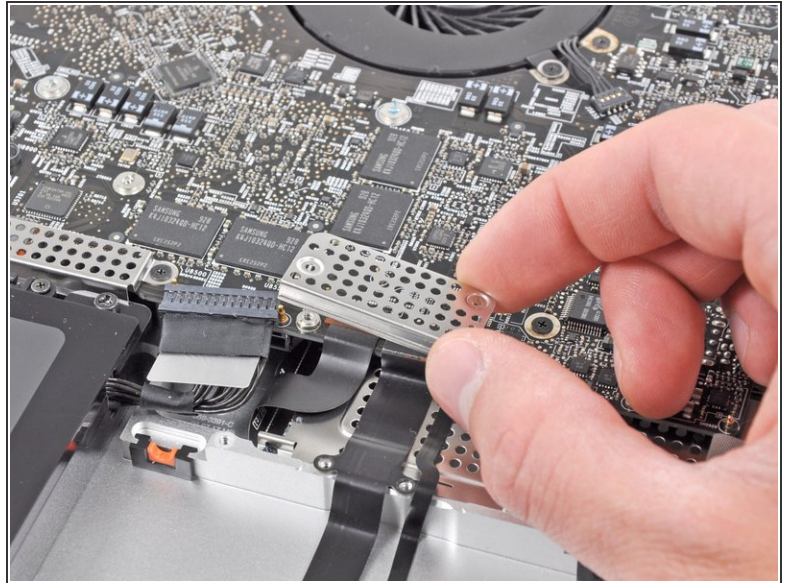
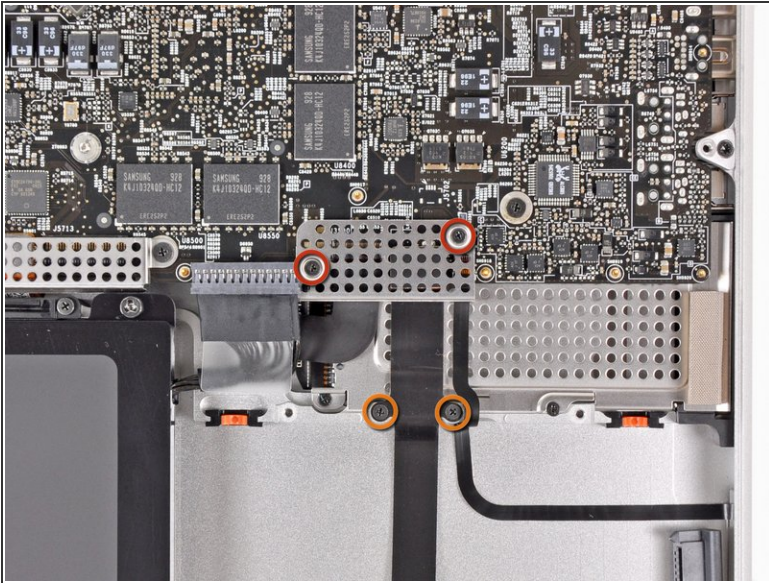
- Use the hard drive's pull tab to lift it out of the upper case.
- ⚠ Don't try to completely remove the hard drive just yet! Its cable is still connected.

Step 7



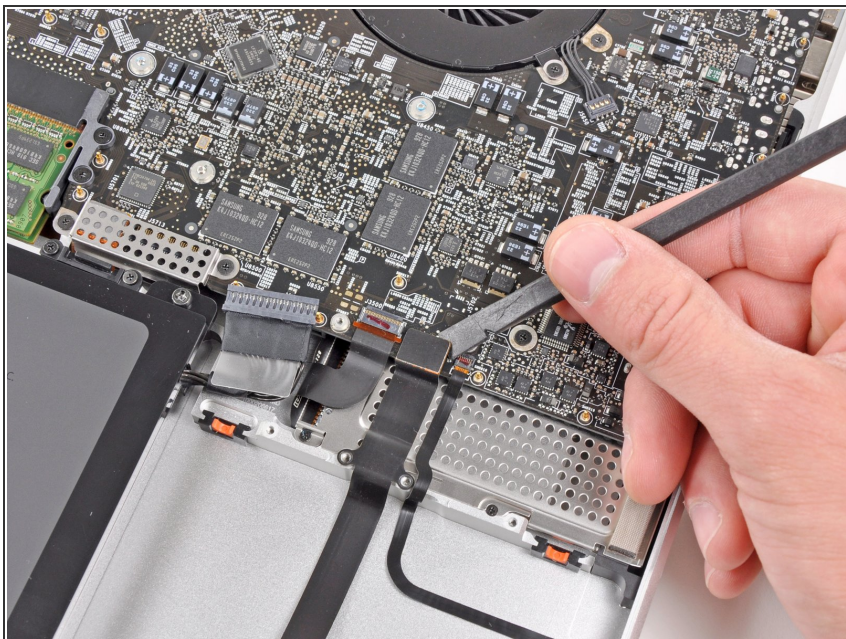
- Pull the hard drive connector away from the body of the hard drive.
- Remove the hard drive from your MacBook Pro.

Step 8 — Hard Drive Cable



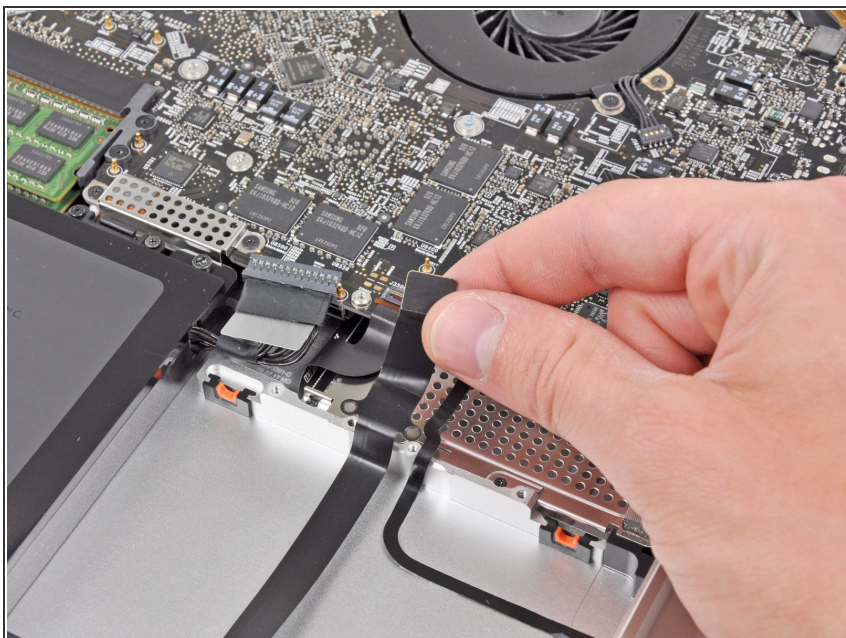
- Remove the following four screws securing the hard drive cable assembly to the upper case:
 - Two 1.6 mm Phillips screws securing the shield that covers the hard drive cable connector.
 - Two 2.2 mm Phillips screws securing the hard drive cable connector to the upper case.
- Remove the shield from the logic board.

Step 9



- Use the flat end of a spudger to pry the hard drive connector up and out of its socket on the logic board.

Step 10



- Lift the hard drive cable out of the upper case.

To reassemble your device, follow these instructions in reverse order.