



Asus V6800V Display Replacement

Like any laptop, the display of the Asus V6800V...

Written By: Brian Tubb



INTRODUCTION

Like any laptop, the display of the Asus V6800V laptop can be damaged by being struck or dropped. Utilize this guide to remove a damaged display in order to replace it with a new one.

Before replacing the display, ensure that a loss of video isn't caused by another issue.

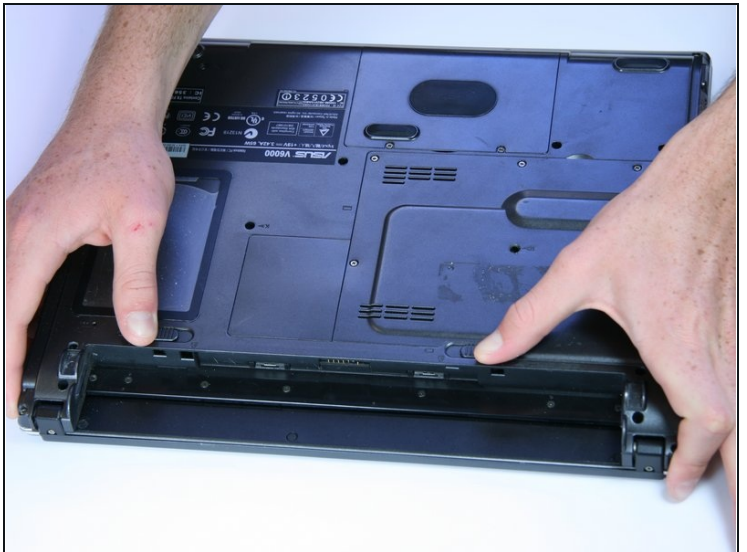
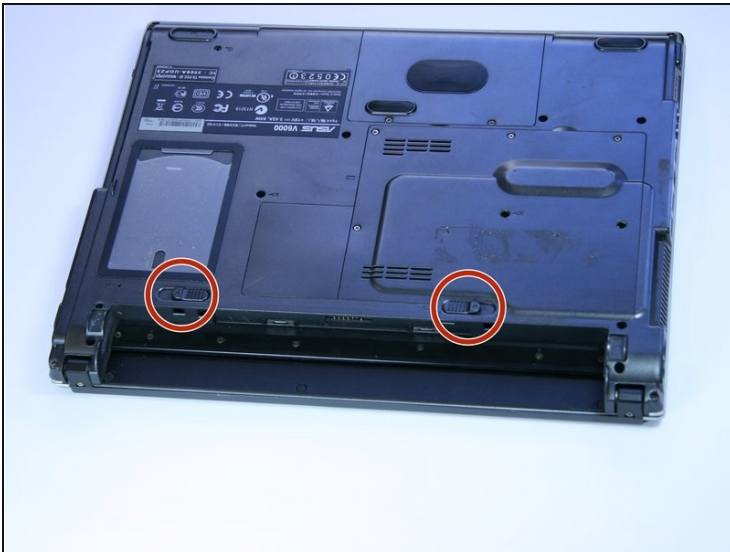
Be sure to remove the charger and battery from the computer before beginning.

TOOLS:

Phillips #0 Screwdriver (1)

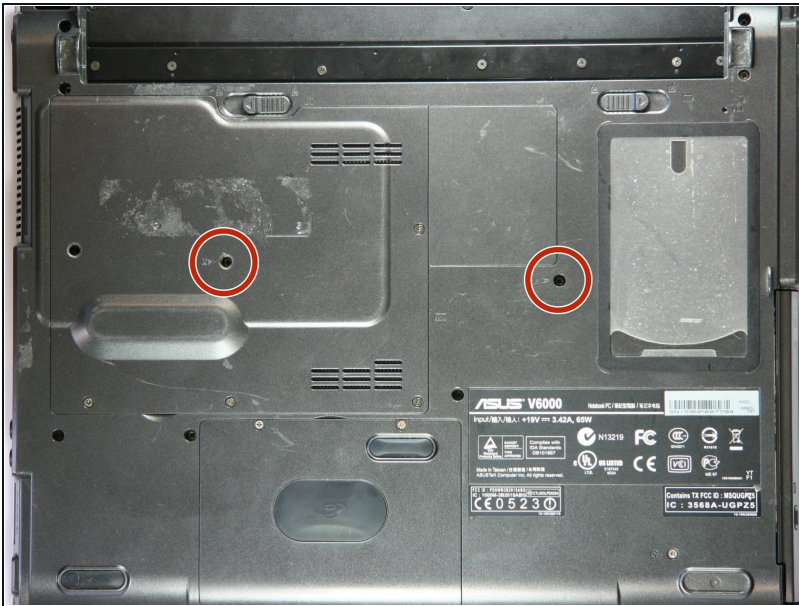
iFixit Opening Tool (1)

Step 1 — Battery



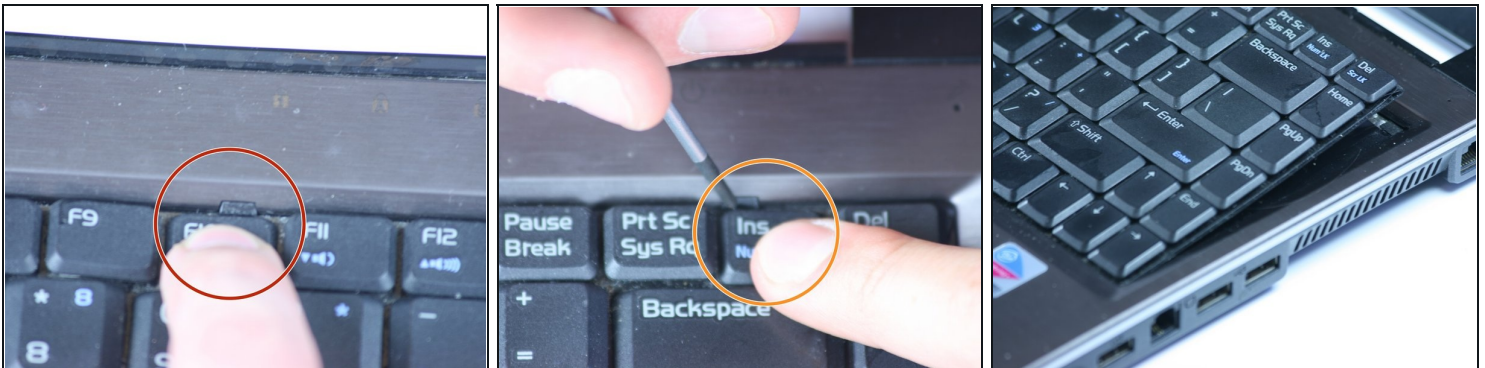
- Place the computer upside down.
 - Using your thumbs, slide both latches away from each other (towards the outside).
 - Push the battery out with your fingers.
- ① The actual battery is not pictured.

Step 2 — Keyboard



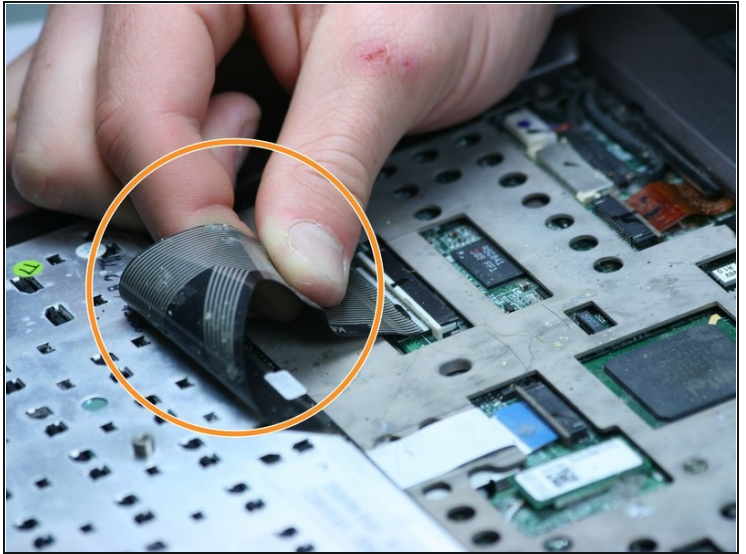
- Using a Phillips #0 screwdriver, remove the two screws from the case.
- ① These screws should have a "K" symbol next to them.

Step 3



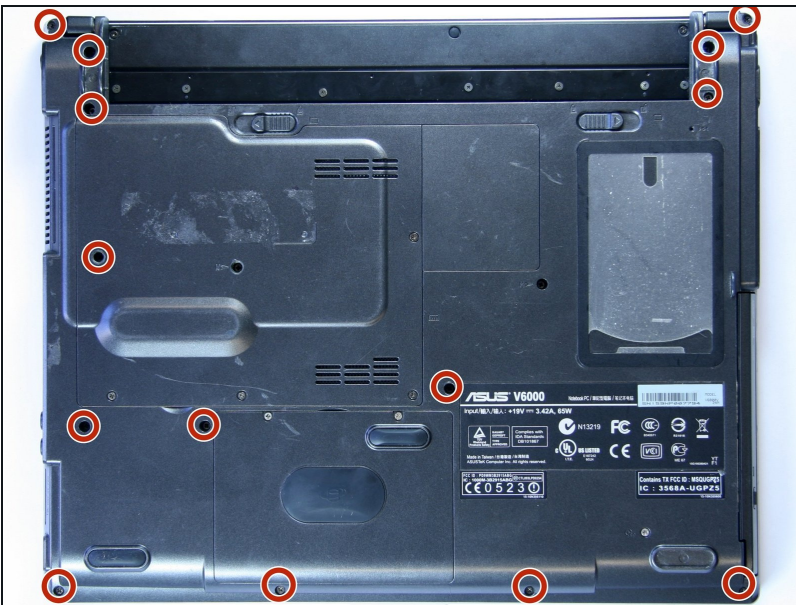
- Locate the four tabs above the F1, F10, INSERT, and between the F5 and F6 keys.
- Starting with the tab above the F1 key, press the tabs inward using your fingernail or spudger. Continue this process for the rest of the tabs.
- ① Once all four tabs have been released, the top half of the keyboard should be free.

Step 4



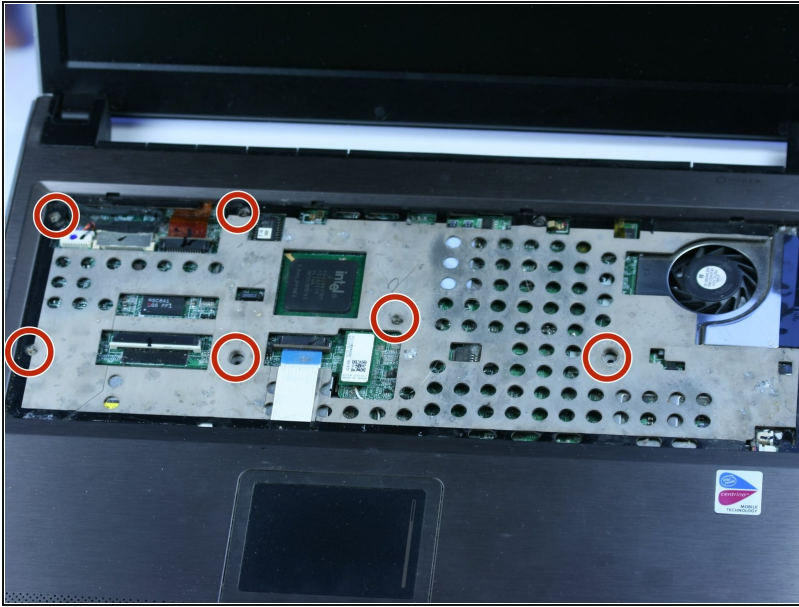
- Pull the keyboard up from the top at a 45 degree angle. Place it upside down on the touchpad.
- Pull the wide ribbon cable laterally from its socket on the motherboard to free the keyboard.

Step 5 — Lower Case



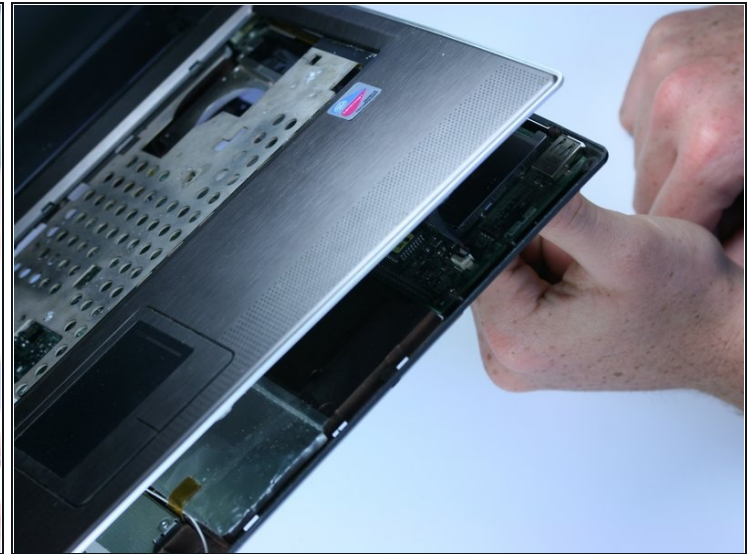
- Using a Phillips #0 screwdriver, remove the screws at the bottom of the chassis to remove the top panel.
- ① This will allow the lower case to be removed from the rest of the computer.

Step 6



- Remove the six screws from below the keyboard with a Phillips #0 screwdriver.

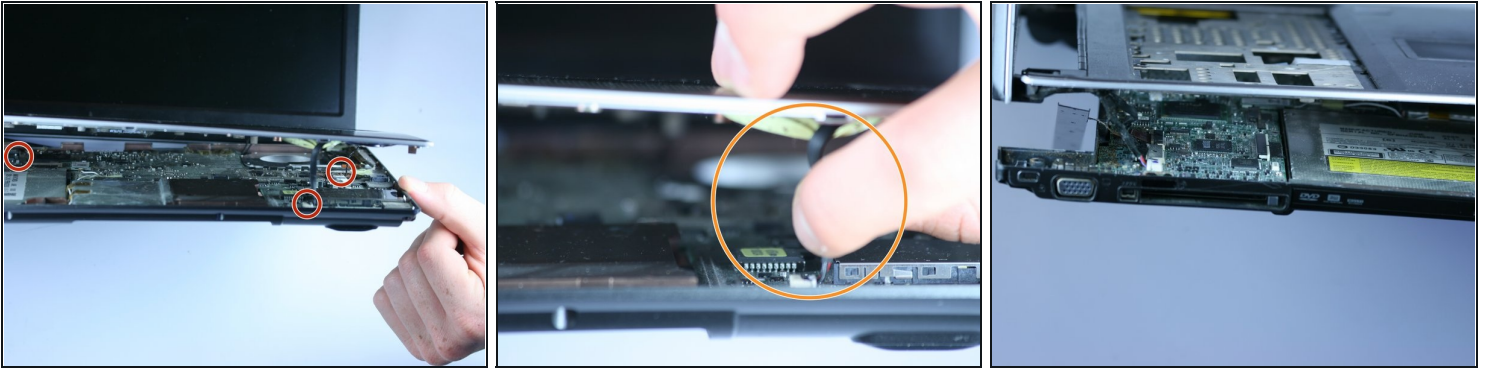
Step 7



- Use your fingernails or a pry tool to gently separate both halves of the case. Begin at the front and work around the entire case.

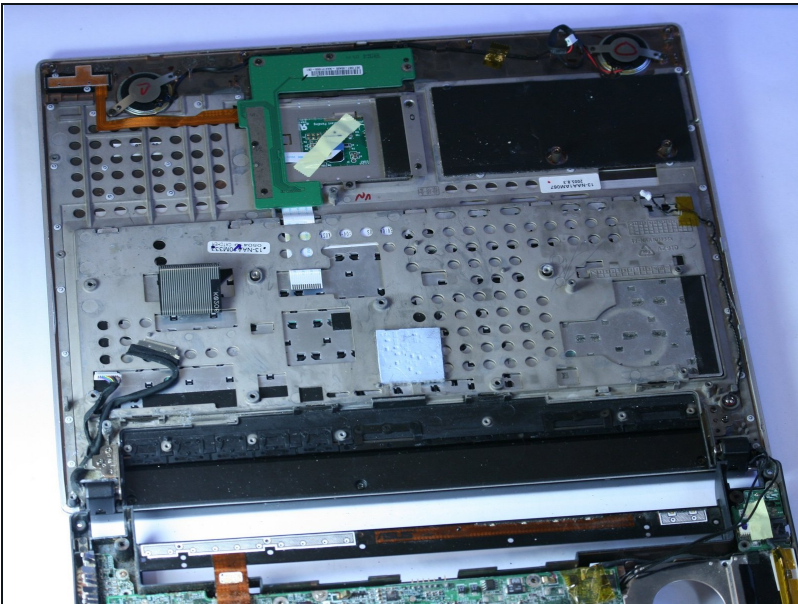
⚠ Be cautious not to damage the cables that connect both sides of the case.

Step 8



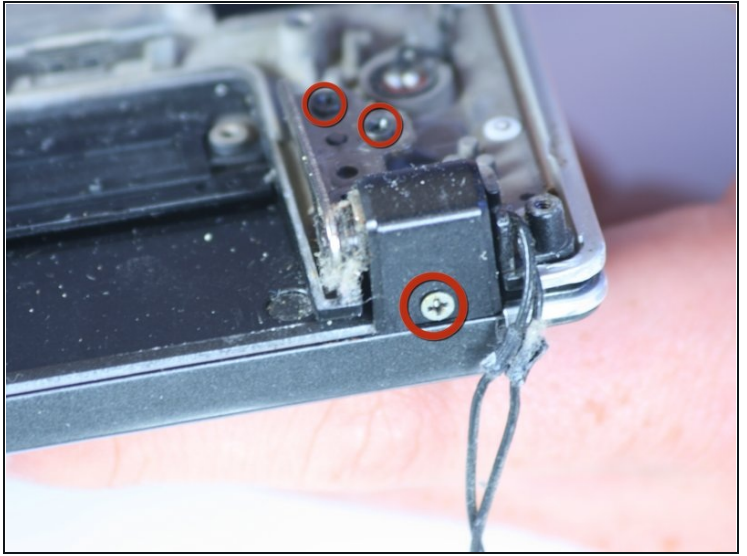
- Remove the internal cables from front to back.
- Use your fingers to gently remove the cables from their sockets.
 - ❗ The cables that connect the display to the main chassis are difficult to pull out using your fingers. A tool, such as [tweezers](#), may be needed.

Step 9



- After separating the top and bottom halves of the case, lay them flat on the work area.

Step 10 — Display



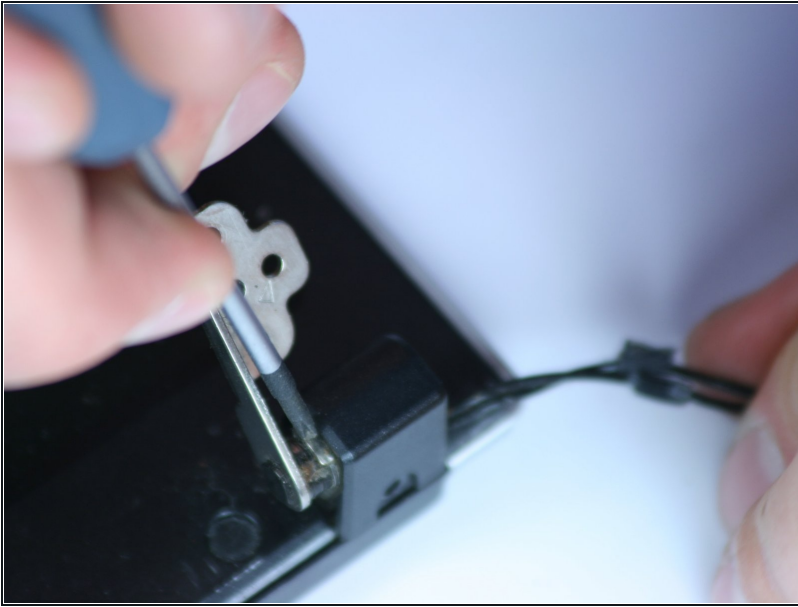
- Remove the six screws (three on each side) holding the top panel of the chassis to the display with a Phillips #0 screwdriver.

Step 11



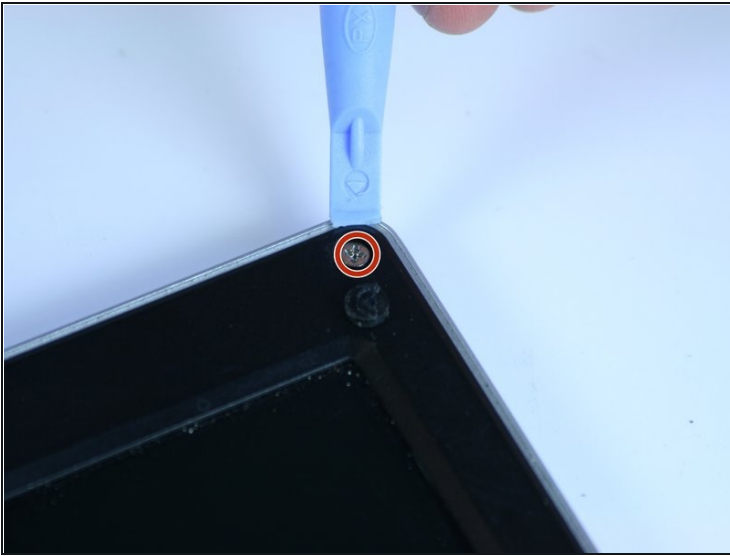
- Remove the display by leaving the display flat on the table and tilting the panel up (as if opening the laptop). This will shift the hinges to allow easy removal.
- Separate the chassis from the display. If the screws were removed properly, it should come free.

Step 12



- Remove the small enclosures around the hinges.

Step 13



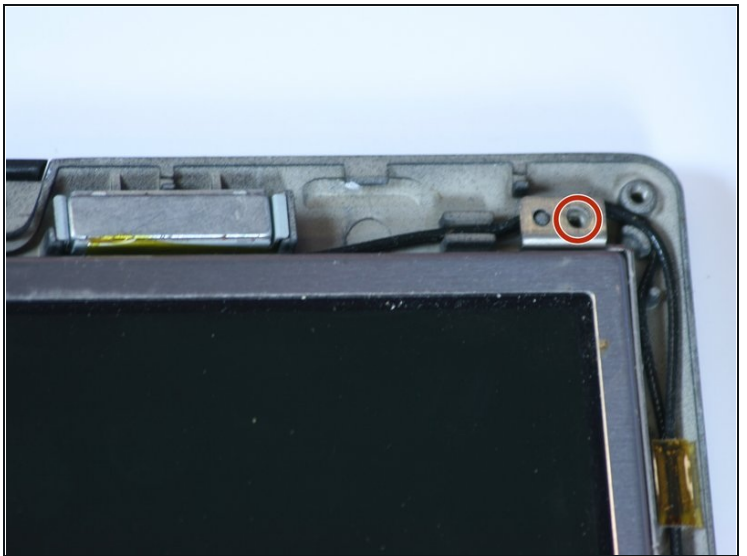
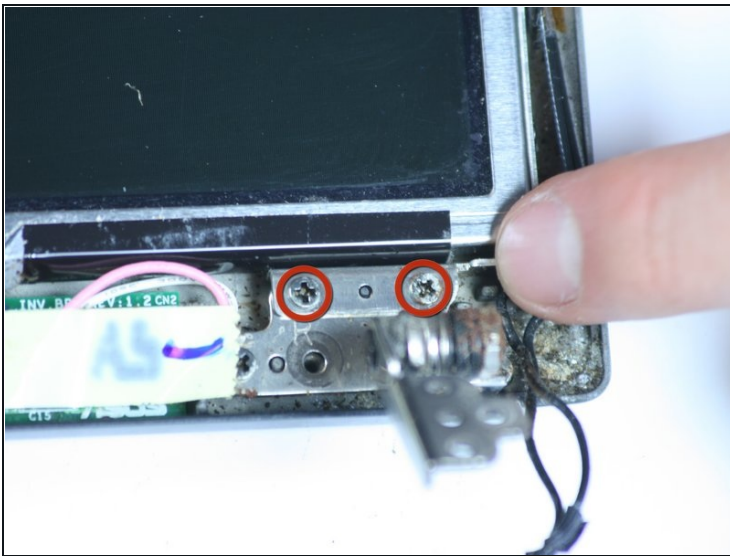
- Remove seven screws from the bezel with a Phillips #0 screwdriver.
 - ① The seven screws are hidden under small circular rubber covers that you will need to remove.

Step 14



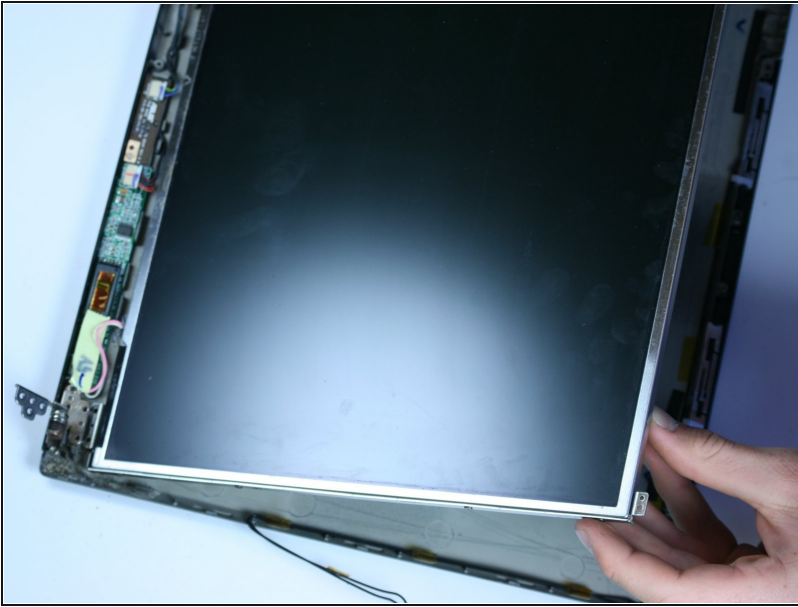
- Using a fingernail or opening tool, gently pry the bezel up from the screen.

Step 15



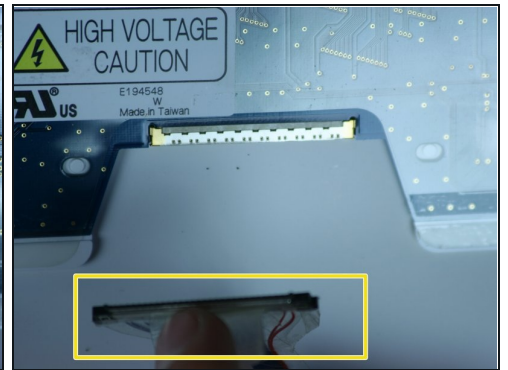
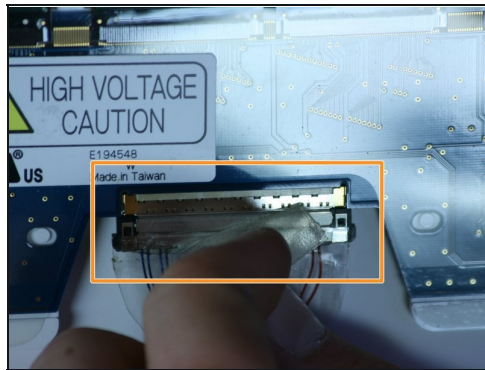
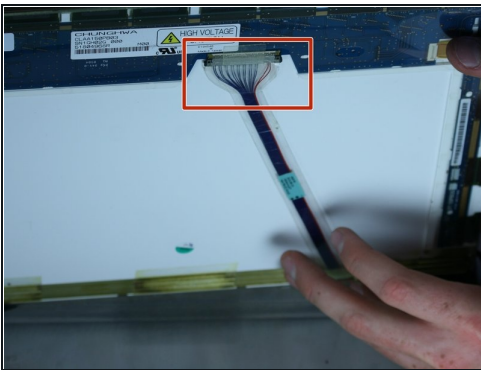
- Remove six screws from underneath the bezel with a Phillips #0 screwdriver. Two are located next to each hinge and one at each top corner.
 - ⓘ Beware of the magnets at the top of the display. If they are moved out of position as you remove the display, gently place them back in their original position.

Step 16



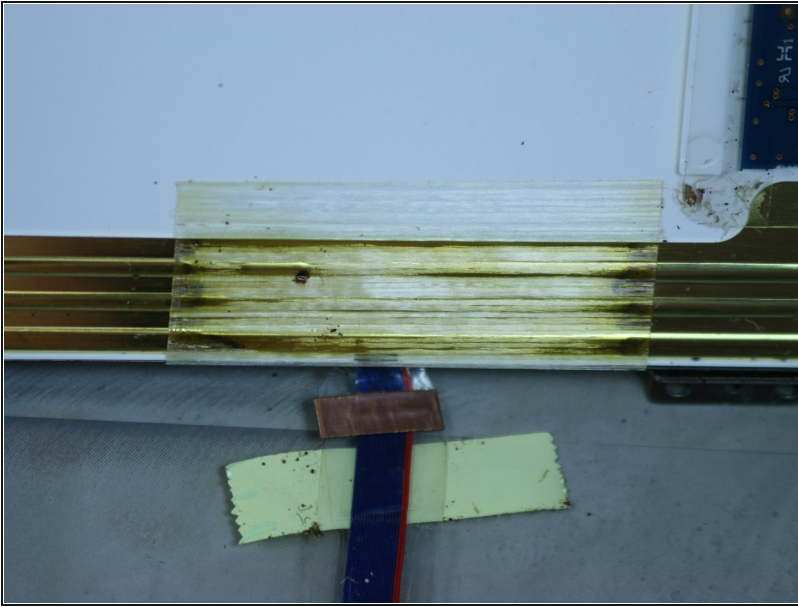
- Lift the panel up from the top of the case.
⚠ Be careful of the display connector near the hinges.

Step 17



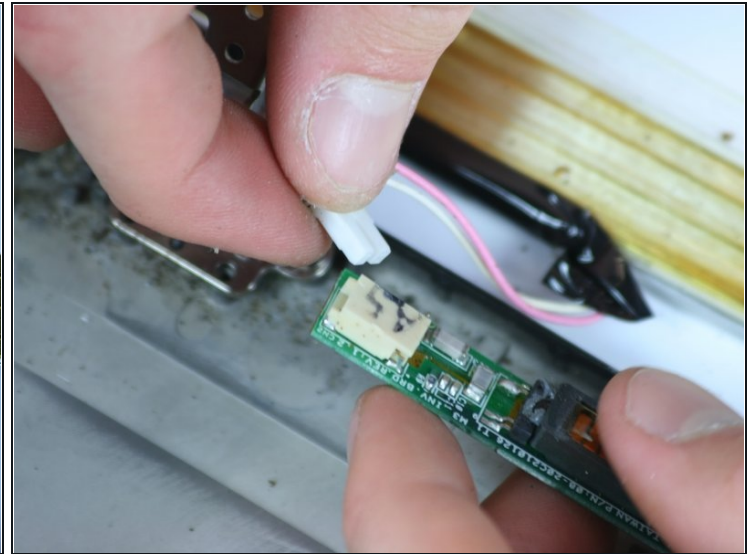
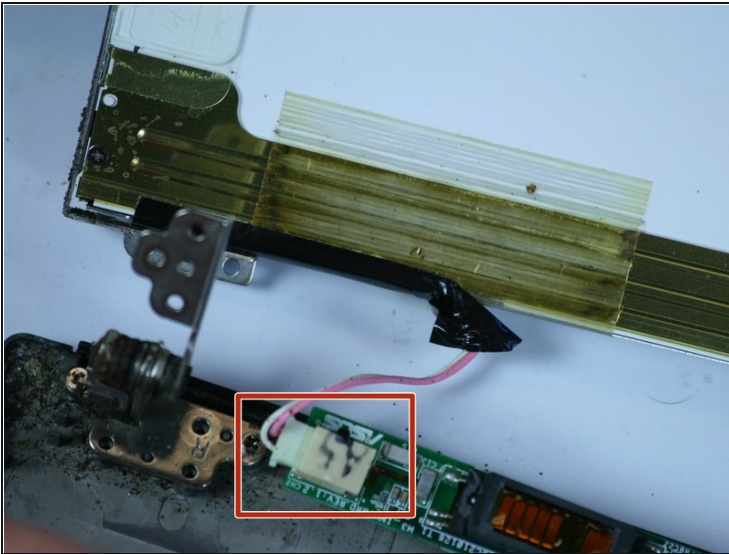
- Look behind the display. Locate the display connector.
- Peel back the tape from over the connector.
- Remove the connector from the display and slowly pull the cable away, peeling the tape back along the way.

Step 18



- Remove the tape holding the cable to the screen.

Step 19



- Remove the small connector located near the right hinge.
 - ☒ Be aware of the direction the cables are removed. They need to be replaced exactly the same later.

Step 20



- The display is now completely removed and can be replaced.

To reassemble your device, follow these instructions in reverse order.