



# Motorola Moto G 1st Generation Display Assembly Replacement

Use this guide to replace the display of the...

Written By: Radostin Lobodov



# INTRODUCTION

Use this guide to replace the display of the Motorola Moto G 1st Generation.

## TOOLS:

[iFixit Opening Tool](#) (1)

[T5 Torx Screwdriver](#) (1)

[Tweezers](#) (1)

## Step 1 — Rear Panel



 Before you start following any of the steps of this guide, completely turn the device off.

- Take the plastic back cover off by either using a plastic Pry tool or simply using your hands. Start from the bottom by the charging port
- Remove any installed SIM card and memory microSD cards.
  - Push the SIM card into the phone, and the spring eject mechanism should release the card.
  - The microSD memory card(s) may not have an eject mechanism. If so, they must be removed **carefully** by pushing on the raised edge/bump that is built onto the card. Use your fingernail or a plastic or rubber tool, but not one that will scratch and damage the delicate card.

 Patience must be taken to prevent irreversible damage and loss of data on the card.

## Step 2 — Removing the Screws



- Unscrew the 3.5mm screws, total of 14, located on the back protective cover by using a T5 Torx screwdriver.

## Step 3 — Battery Cover



- Use a plastic opening tool to remove the protective cover.

⚠ Carefully work the plastic tool around all the edges of the phone.

- ⓘ The protective cover holds the **Volume** and the **Home** buttons which might fall off the assembly when the cover is removed.



## Step 4 — Disconnecting the Battery



- Disconnect the connection between the Battery and the Mother Board by using the Pry tool.

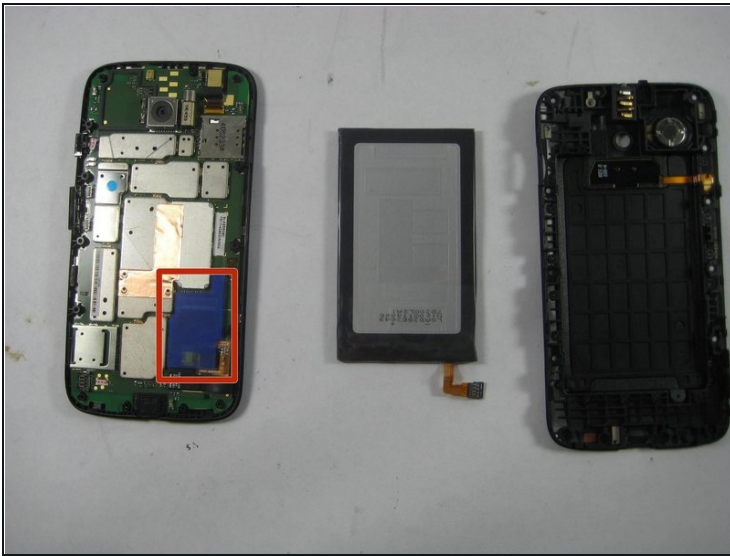
## Step 5 — Removing the Battery



- With the battery already disconnected, work around its edge with the pry tool to remove it from the assembly.

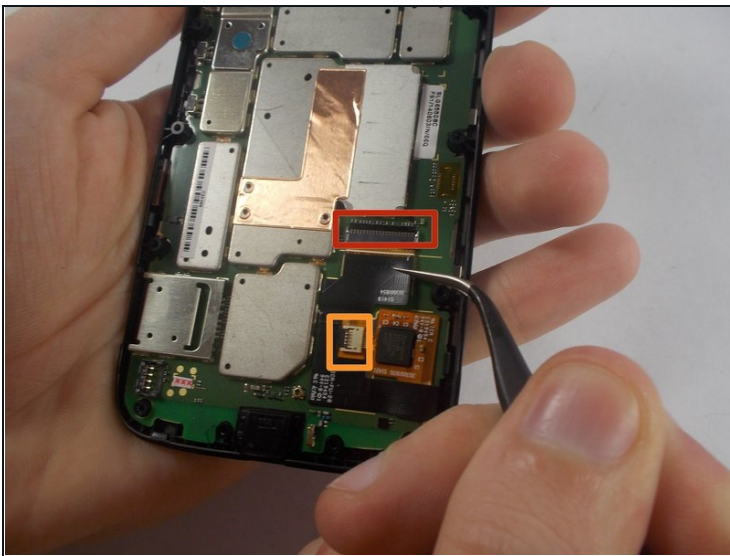
⚠ The battery is attached with a sticker, so it may take some work to pry up. Just work at it slowly and carefully until you get it.

## Step 6 — Removing the protective cover.



- Remove the plastic protective cover by using the [tweezers](#).

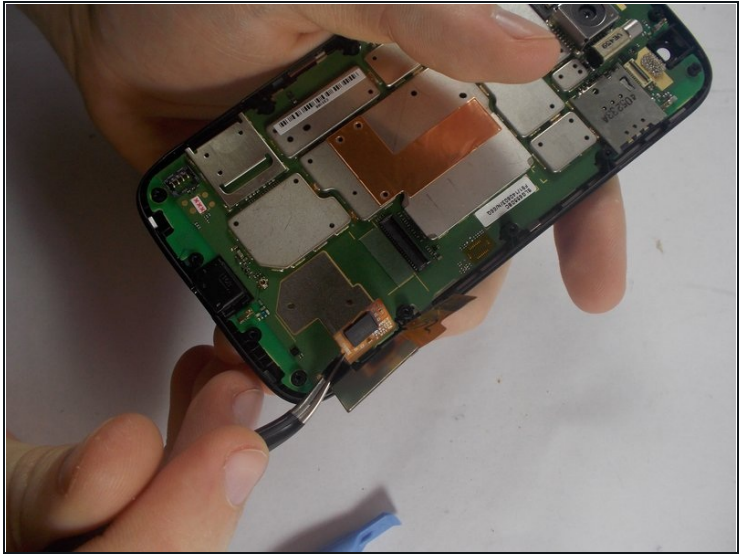
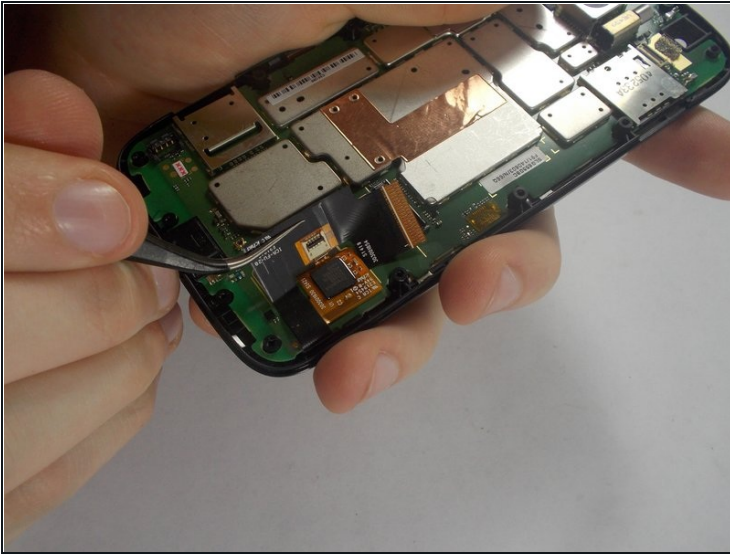
## Step 7 — Disconnecting the Display Cable.



- Lift up the retaining flap on the large display cable ZIF connector.
- Carefully pull the display cable from its socket on the motherboard.
- Lift up the retaining flap on the small ZIF connector that sits at the middle of the display cable.

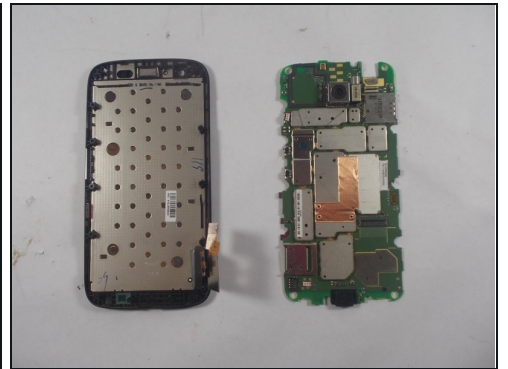
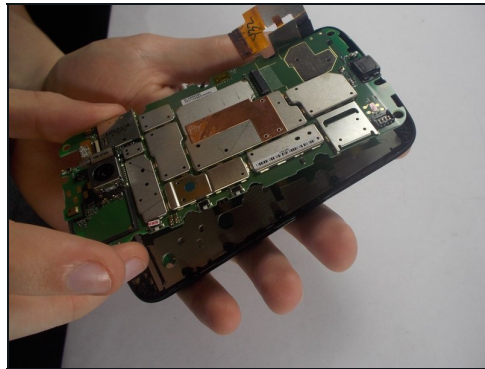


## Step 8 — Releasing the Ribbon cable.



- Once the ribbon cable is disconnected, use the tweezers to pry it from the mother board.
- ⓘ The ribbon cable is connected to the mother board with adhesive. Work cautiously to peel it off with the tweezers.

## Step 9 — Detaching the screen.



- Use the plastic prying tool and slowly work around the edges of the phone to detach the screen from the motherboard.

---

To reassemble your device, follow these instructions in reverse order.