



Disassembling Polaroid a520 Logic Board

Written By: Dani





TOOLS:

- [Phillips #00 Screwdriver](#) (1)
 - [Spudger](#) (1)
-

Step 1 — Battery



- Place your thumb on the battery cover and push left towards the arrow.

i The cover will release and pop open.

Step 2



- Remove the batteries from the camera.

Step 3 — Casing



- Remove four 3 mm screws on the right side of the camera using a Phillips #1 screwdriver.

ⓘ This will release the front and back casings.

Step 4



- Use your nail or a flat object to pry up the edge of the front casing. Push the casing up and back.

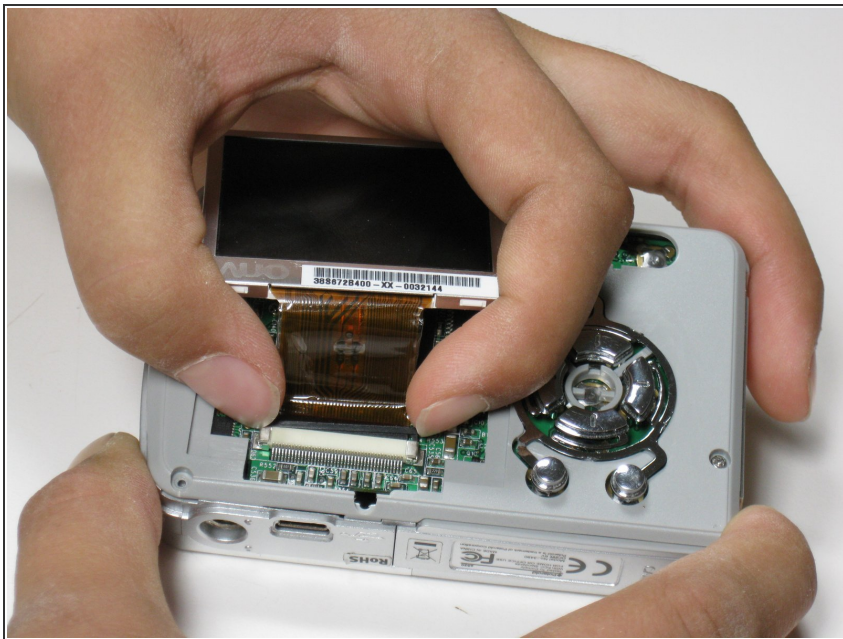
ⓘ Repeat this step for the back casing.

Step 5 — LCD Screen



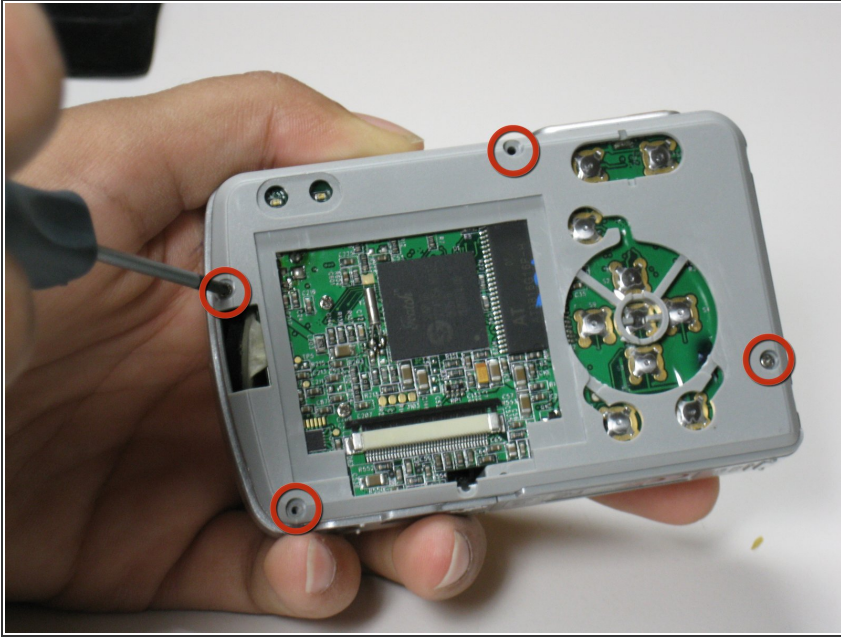
- Under the screen, locate the black plastic strip that sits above the white plastic strip.

Step 6



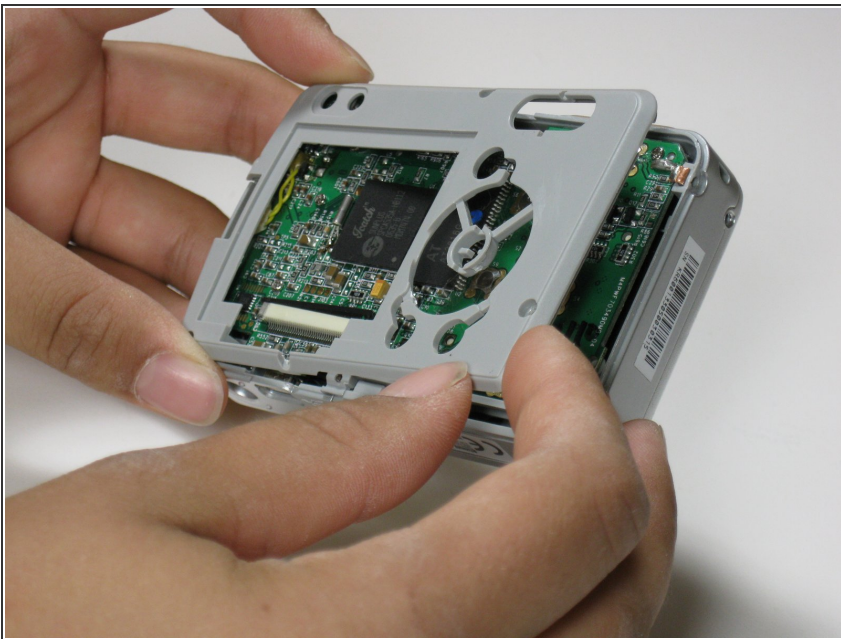
- Pull both sides of the black piece upward-about a mm.
- ⚠ The black plastic piece is not meant to come all the way off, just enough to release the screen.
- Once the piece is lifted carefully slide the screen out of the slot.

Step 7 — Logic Board



- Unscrew and remove the four (6 mm) screws on the inside casing.

Step 8



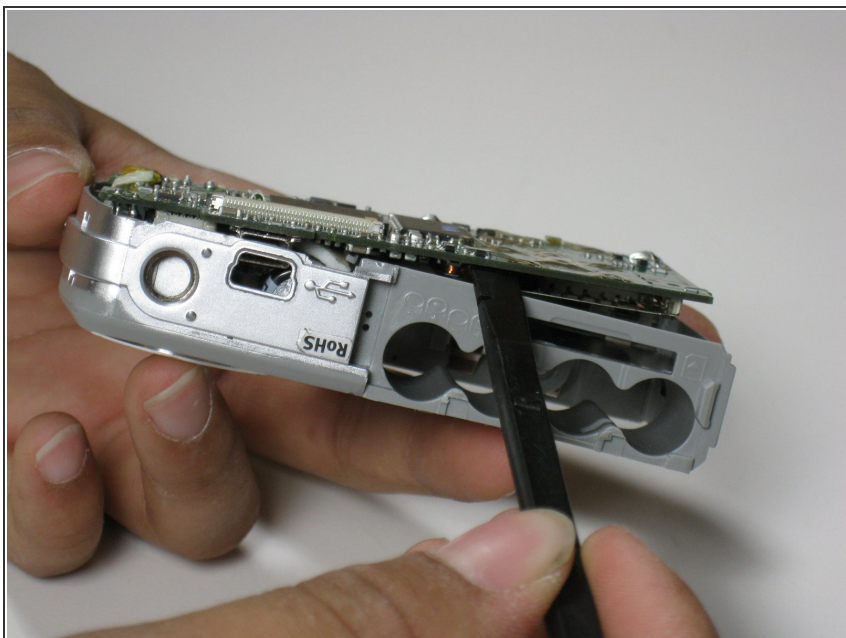
- Pull the inner casing off of the camera.

Step 9



- Unscrew and remove the four (4mm) screws from the logic board.

Step 10



- Use a spudger to pry up all four sides of the logic board and slide it out of the camera.

To reassemble your device, follow these instructions in reverse order.