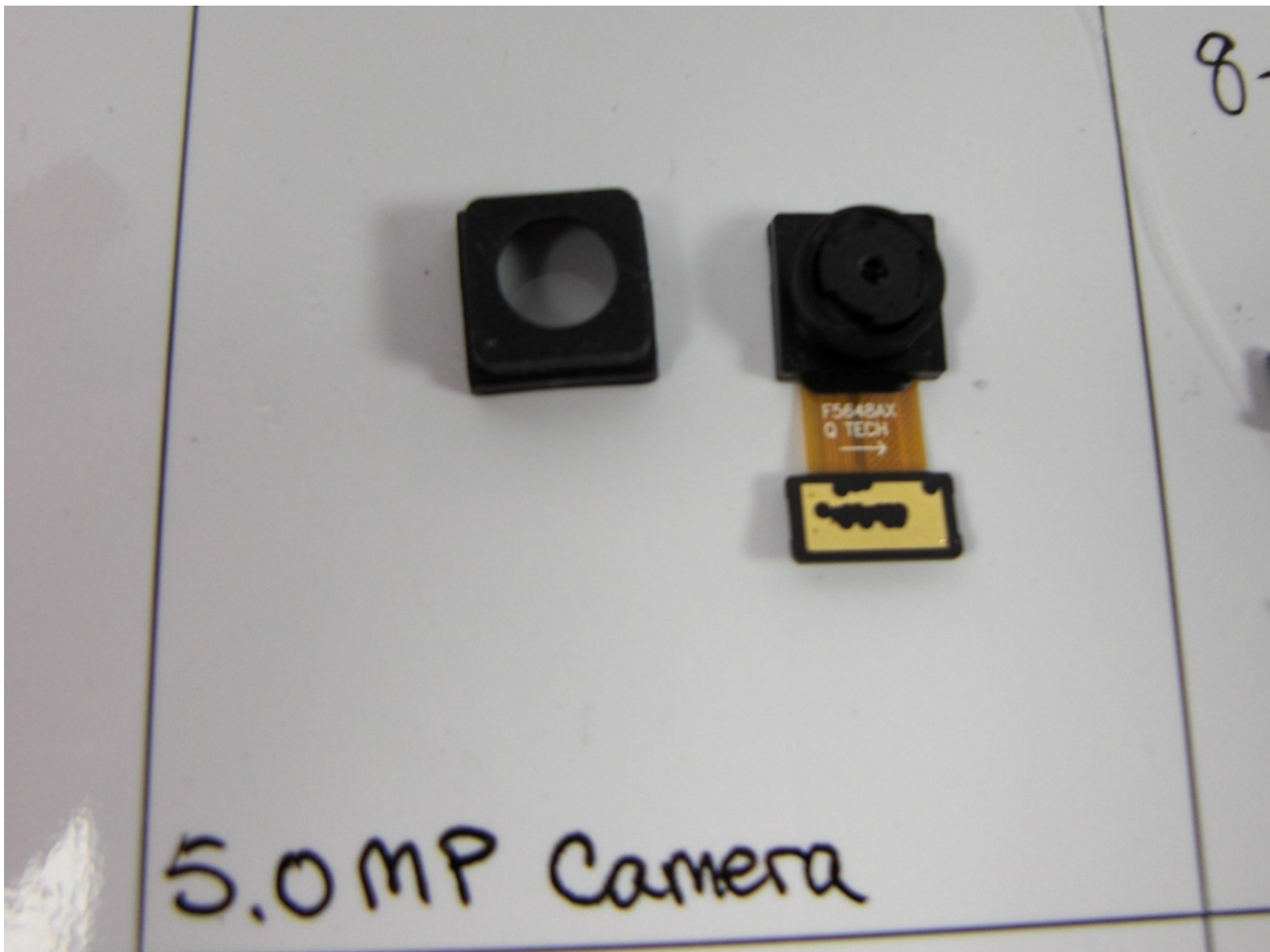




Alcatel OneTouch Evolve Camera Replacement

This guide will provide users with the information to access the camera of the Alcatel OneTouch Evolve should you choose to clean, replace or remove the camera.

Written By: Melissa Pijoan



INTRODUCTION

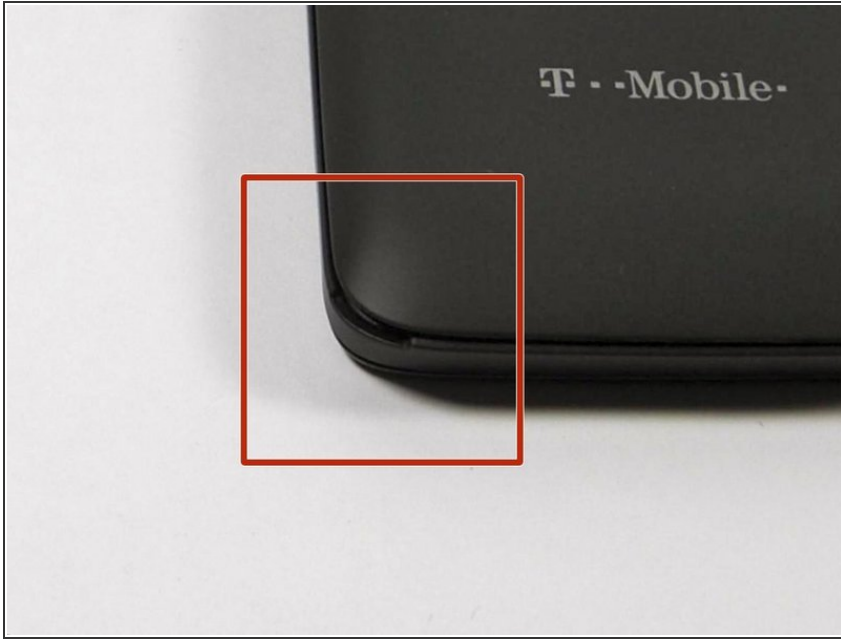
In the age of evolving cell phone technology, the cameras each has is a huge factor point when buying the phone. These cameras are becoming so advanced, they are replacing the need for handheld digital cameras. Because of this, owners rely greatly on a functioning camera in their phones. This guide will provide users with information needed access and replace the camera in an Alcatel OneTouch Evolve in the case of a malfunctioning, damaged or dirty camera.



TOOLS:

- [iFixit Opening Tools](#) (1)
 - [Phillips #0 Screwdriver](#) (1)
 - [Tweezers](#) (1)
-

Step 1 — Locate the access tab



- This will be an opening with enough space to insert the flat head of the plastic opening tool.
- It will be located on the bottom right of the phone

Step 2 — Place the flat head end of the pry tool into the tab



- Rotate the pry tool 90 degrees until the panel lifts up.
- With your thumb nail, lift the rest of the panel up around the perimeter of the phone.

Step 3 — Identify the Battery



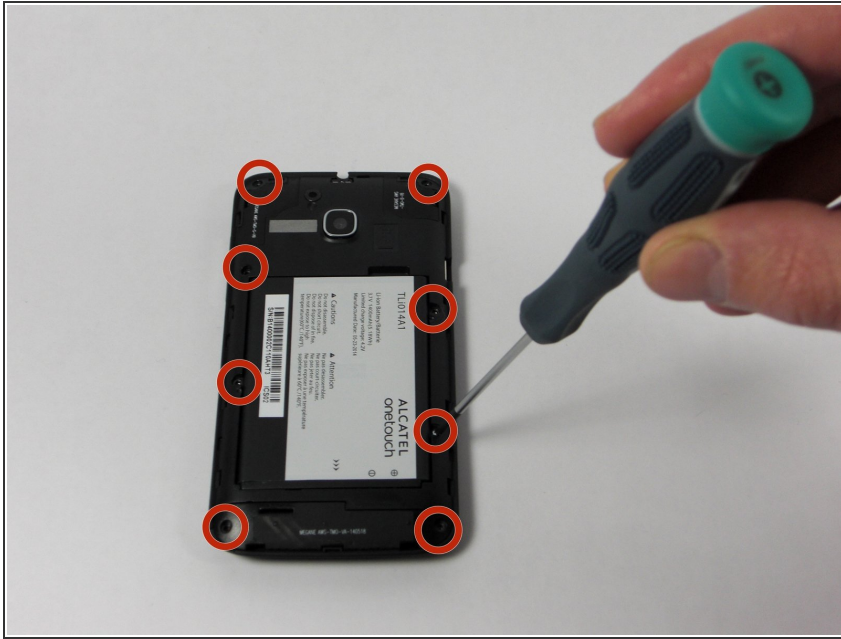
- This is the battery for the Alcatel One Touch Evolve. Look for this component when the back panel has been removed.

Step 4 — Removing the battery



- Place finger in the tab on the top right corner of the battery indicated by a black arrow. With slight pressure, push battery down and out of the slot until the battery is removed

Step 5 — Locate Screws Holding the Secondary Panel in Place



- There will be eight 4.5mm screws that fit your Phillips head PH00 screwdriver notated by the red circles in the image.

Step 6 — Remove Screws



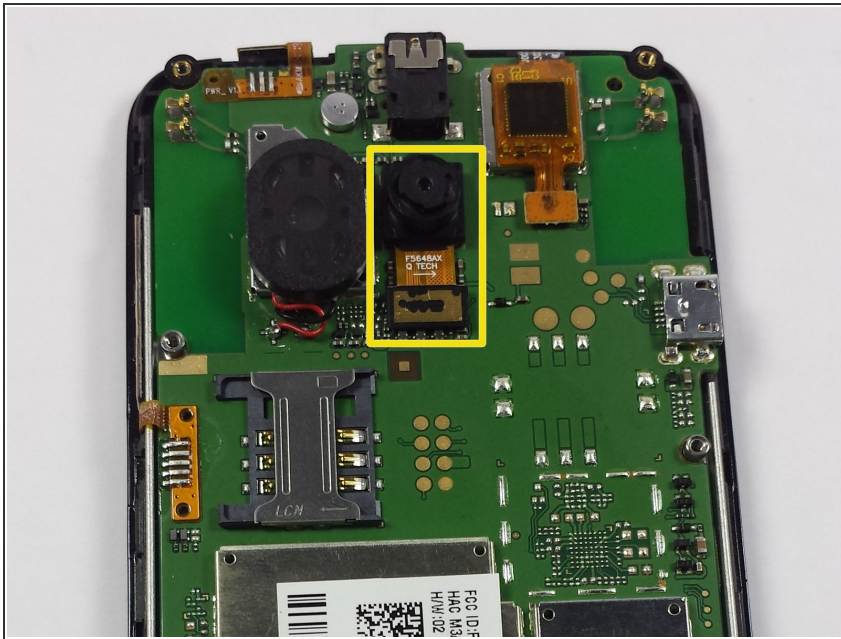
- Unscrew each screw, counter-clockwise (left), until each one has been removed.
- If necessary, use tweezers to fully remove the screws from the device.
- ✦ Remove battery before lifting off the panel.

Step 7 — Prying the Panel Off



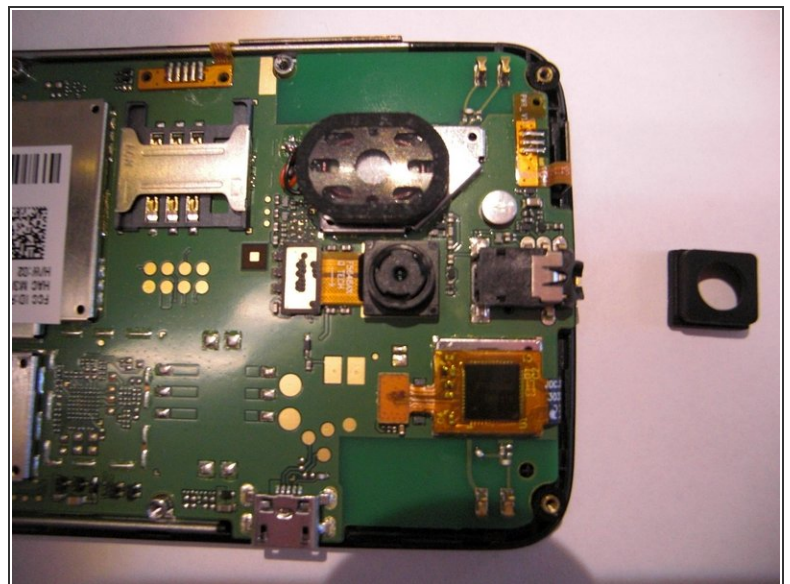
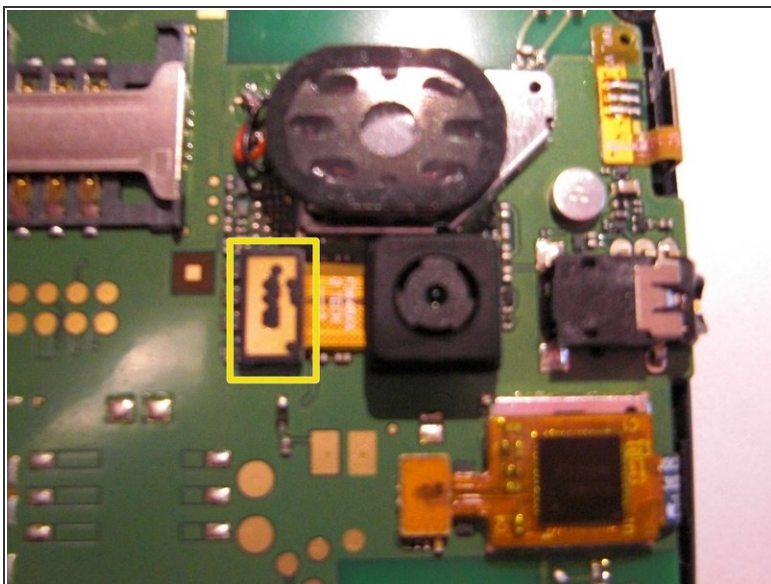
- Access the small pry tool in the tool kit
 - Place flat head in the crease between the phone and panel where the matte finish meets the shiny finish of the front of the phone.
 - Rotate the pry tool 90 degrees until part of the panel lifts up
 - All areas need to be fully risen off before the panel can be removed.
- ⚠ Do not use the opening tool to pry open the device near the power button or near the volume button.

Step 8 — Locate the Camera on the Device



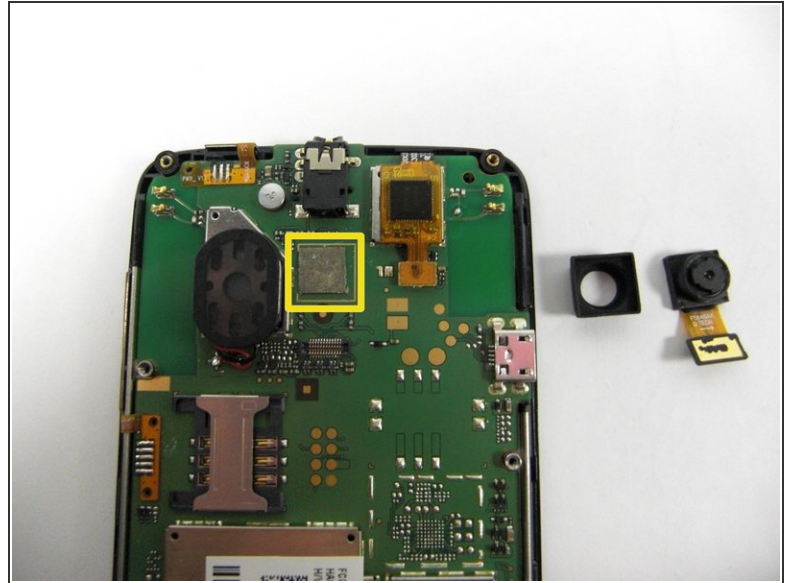
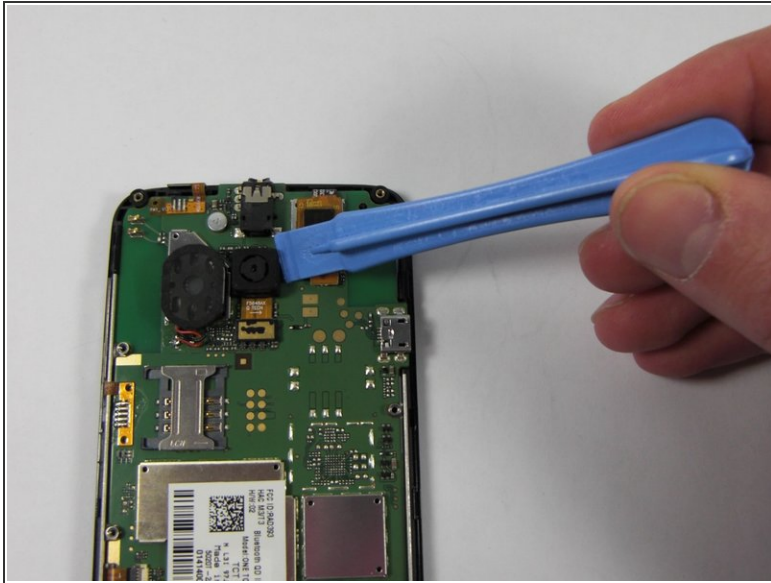
- See yellow square for the location of the camera on the mother board.

Step 9 — Unclip the connection to the motherboard.



- By gently lifting the bottom rectangular piece of the camera component upwards and away from the device, the connection will come free.
- Remove the rubber casing from the camera, this piece is simply resting over the camera and can easily be removed.

Step 10 — Separate the camera from the glue patch



- Place your plastic opening tool underneath the bottom of the camera and rotate the tool to lift the camera. This will take a slight amount of force.
- You will start to see the silver sticky patch between the camera and the mother board - leave this on the mother board.
- Keep separating the camera from the sticky patch until completely removed.
- To replace camera, use the yellow lines on the motherboard as your guide.

To reassemble your device, follow these instructions in reverse order.