



# Canon PIXMA MP190 Scan Bed Removal

A dirty scan bed will cause poor scan or copy quality. Cleaning of the scan bed will remedy this issue.

Written By: Garret Wescott



---

## INTRODUCTION

The following guide will demonstrate how to remove the scan bed from the printer as well as how to correctly clean the scan bed.



### TOOLS:

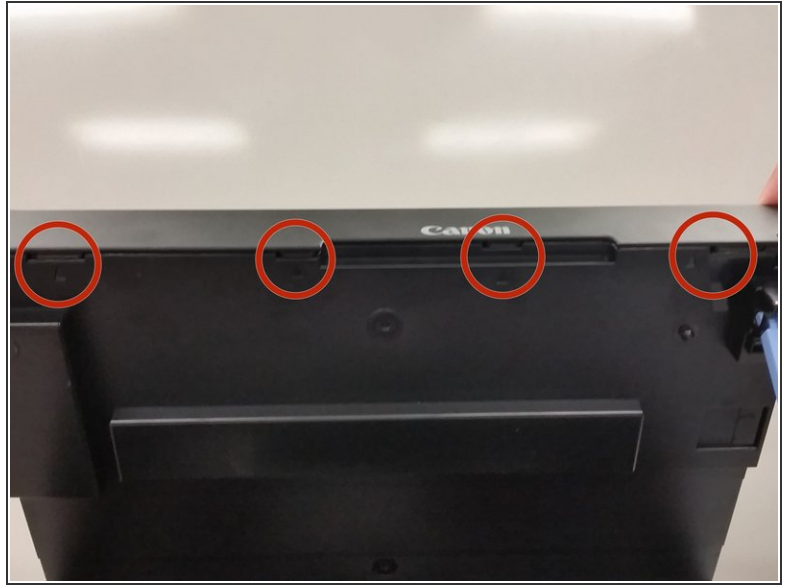
- [iFixit Opening Tools](#) (1)
-

## Step 1 — Remove Scanning Bed Cover



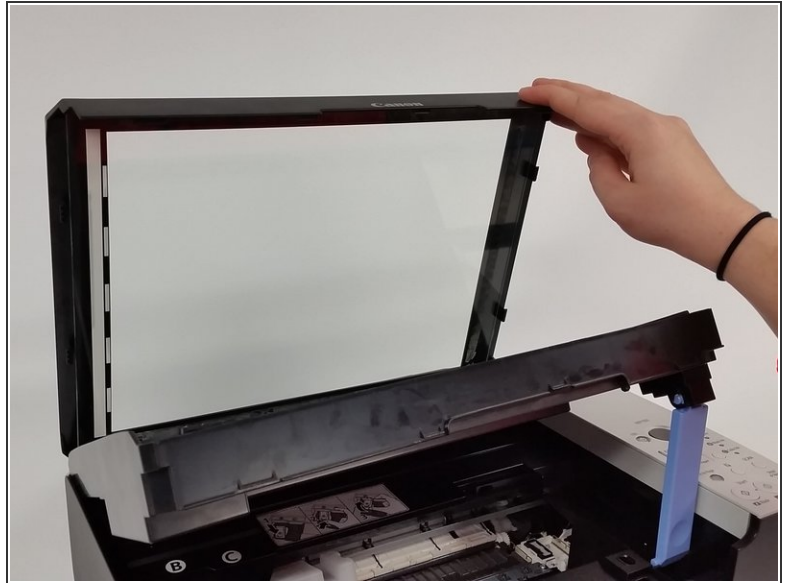
- Lift scanning bed cover with one hand, and pry the right hinge inward using a plastic opening tool.
- The cover will lift up and away from the printer.

## Step 2 — Accessing Scan Bed



- Lift the scan bed into the upright position.
  - Ensure the scanning unit support seats into the scanning unit support slot.
- The four arrow markers located on the bottom edge of the scan bed mark the four tabs that must be released.

### Step 3 — Accessing Scan Bed



- Place a plastic opening tool at each of the four marking arrows.
- The scan bed will detach from the scan bed unit. Lift scan bed glass upward to access the bottom surface of the glass.

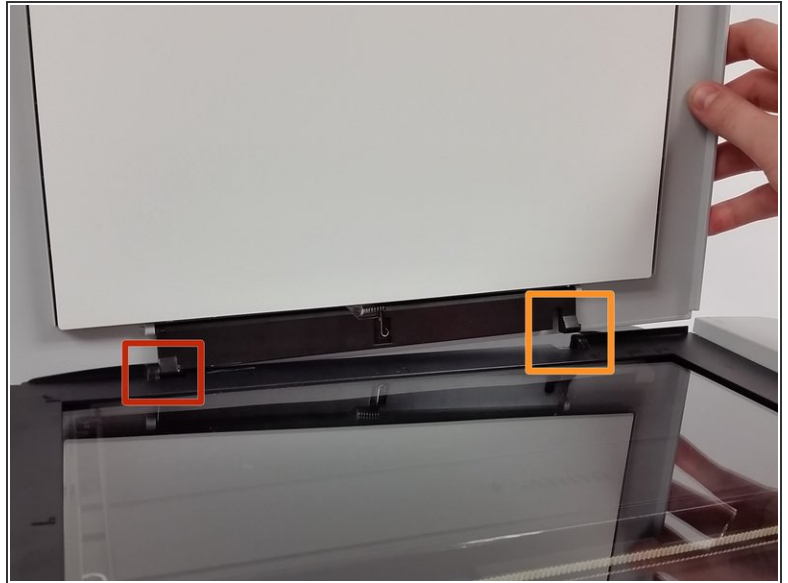
### Step 4 — Cleaning the Scan Bed Glass



- Using the screen and device cleaner and cloth remove any dirt or debris from the bottom surface of the scan glass.



## Step 5 — Reassemble Scan Bed Unit



- Lower the scan bed glass down on to the scanning unit until the clips reengage.
- Clean the top surface of the scan bed glass using the screen and device cleaner and cloth.
- Put the scan bed cover back on by placing the left hinge in first.
  - Then snap the right hinge into place.
- The printer is now ready to scan or copy.

To reassemble your device, follow these instructions in reverse order.