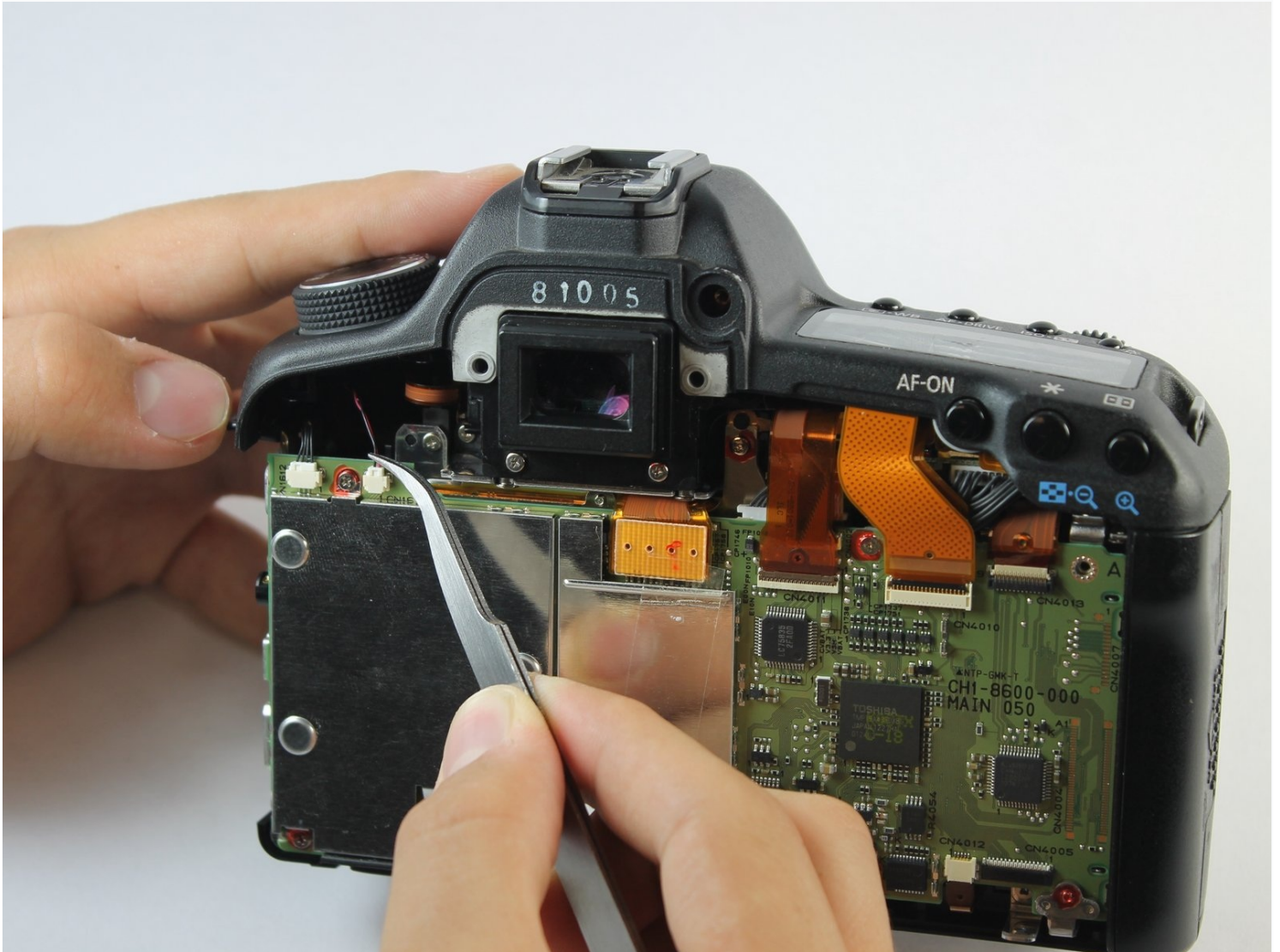




Canon EOS 5D Mark II Front Panel Replacement

This guide will show users how to remove the...

Written By: Mike Seed



INTRODUCTION

This guide will show users how to remove the front panel. It is necessary to remove the front panel in order to remove the top panel and access many internal components.

TOOLS:

Phillips #0 Screwdriver (1)

Tweezers (1)

Step 1 — Back Panel



- Peel back the rubber cover above the in/out ports to reveal two screw heads.

Step 2



- Remove both 5.4 mm screws using a Phillips #0.

Step 3



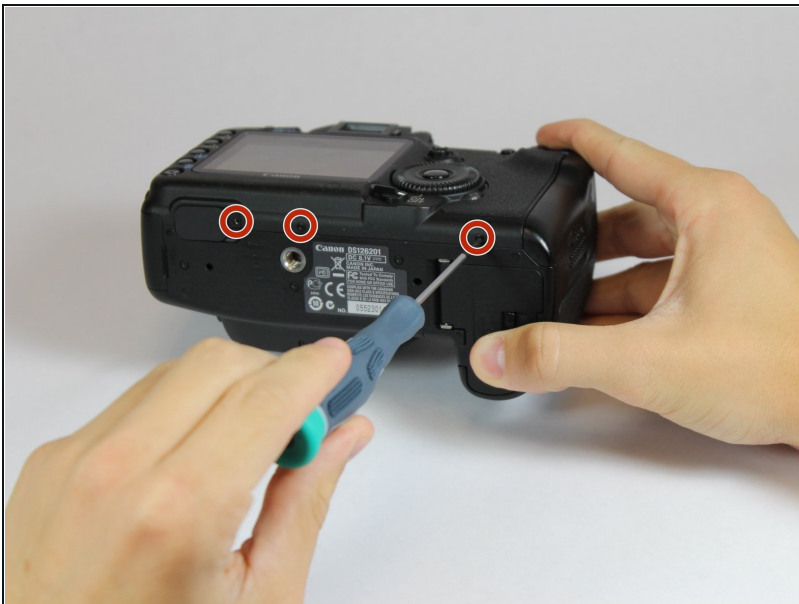
- Lift the in/out port plastic covering from the bottom where the backup battery used to be.

Step 4



- Remove each 6.3 mm screw on either side of the viewfinder using a Phillips #0 screwdriver.

Step 5



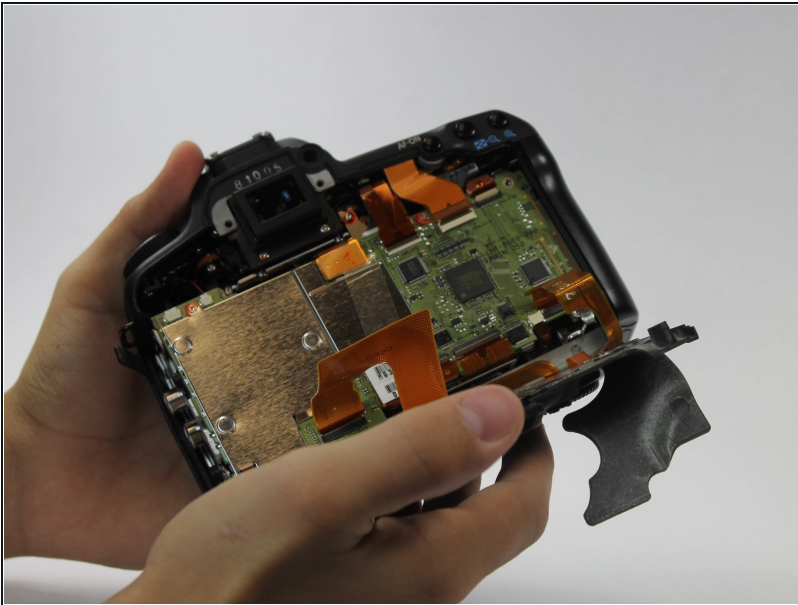
- Remove the three 4.8 mm screws on the bottom of the back plate using a Phillips #0.

Step 6



- Peel back the rubber covering next to the menu dial to access the screw.
- Remove the single 3.4 mm screw using a Phillips #0.

Step 7



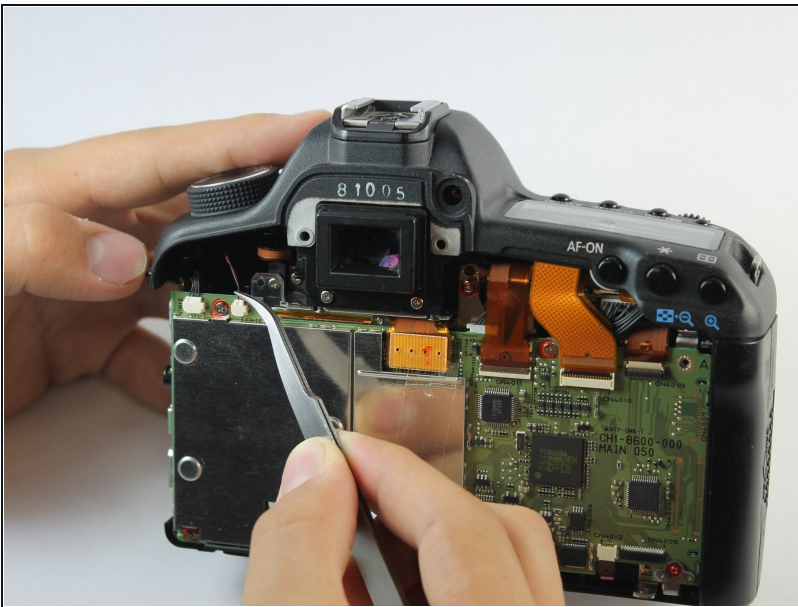
- The back panel can now fall off easily by turning the device upside down. Be sure to catch it so the data ribbons do not tear or tug.

Step 8



- Remove each data ribbon cable from the motherboard by applying pressure down towards the motherboard and gently sliding your thumb upwards on the slot where the cable meets the motherboard. This will raise a very small clip that locks the cable in place.
- The back panel is now free from the rest of the device.

Step 9 — Front Panel



- Using [tweezers](#), pull out the wire attaching the front panel to the motherboard.

Step 10



- Peel off the rubber cover on the front panel in order to access the screws underneath.

Step 11



- Remove each of the 4.9 mm three screws using a Phillips #0.

Step 12



- Remove the two 4.8 mm screws above where the lens would be using a Phillips #0.

Step 13



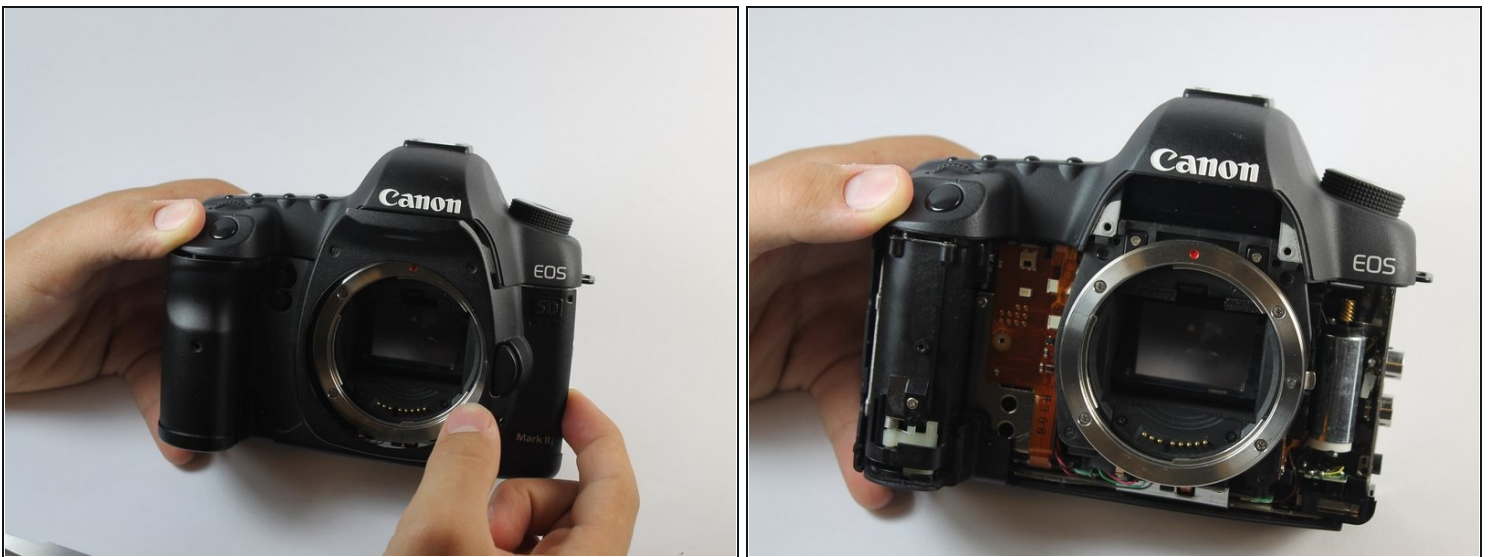
- Remove the single screw underneath where the lens would be using a Phillips #0.

Step 14



- Remove the four 3.0 mm screws next to the memory card reader using a Phillips #0.

Step 15



- Remove the front panel by lifting upwards from the right side where the in/out ports used to be.

To reassemble your device, follow these instructions in reverse order.