



Apple TV 1st Generation Power Indicator LED Replacement

This repair requires either an extremely fine...

Written By: John Matheson

INTRODUCTION

This repair requires either an extremely fine tipped soldering iron and extremely steady hands, or an SMD rework station.

TOOLS:

[Desoldering Braid](#) (1)
[Soldering Iron](#) (1)
[T20 Torx Screwdriver Bit](#) (1)
[TR8 Torx Security Screwdriver](#) (1)
[Tweezers](#) (1)

PARTS:

[White LED](#) (1)

Step 1 — Logic Board



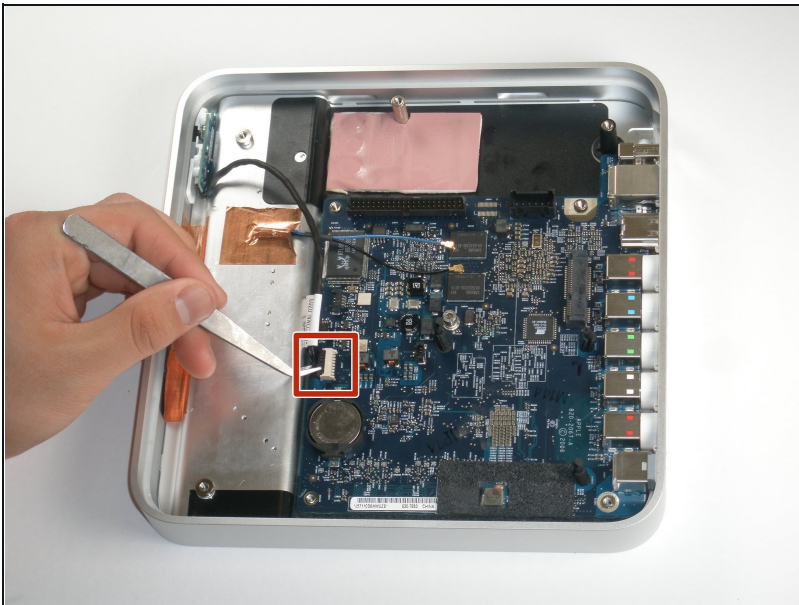
- Remove the T8 Torx screw securing the metal shield to the case.
- ① To remove the T8 screw, you must insert the screwdriver through the access hole in the metal shield. The access hole is located near the PRAM battery.

Step 2



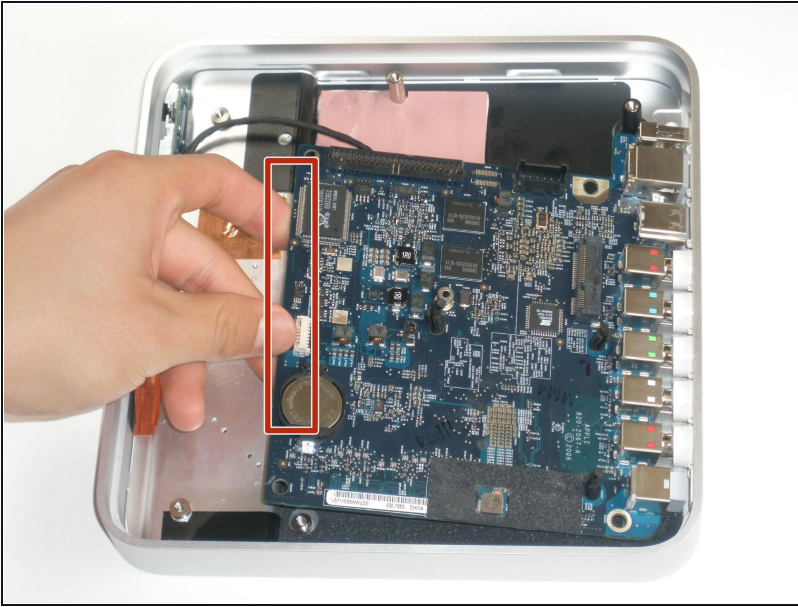
- Remove the T20 screw located near the digital audio port.
- Lift and remove the metal shield from the upper case of the Apple TV.

Step 3



- Use a pair of [tweezers](#) to pull the IR cable straight away from its socket on the logic board.
- ① Make sure to pull the connector parallel to the face of the logic board. Do not pull the connector straight up.

Step 4

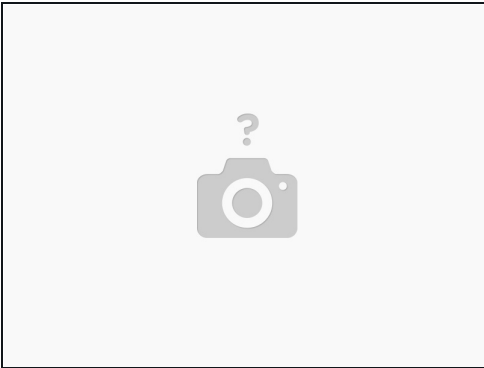


- Lift the left edge of the logic board (nearest the PRAM battery) upwards and slide it out of the case, away from the ports.

⚠ Be careful not to damage the ports when sliding the logic board out of case.

- The logic board remains.

Step 5 — Power Indicator LED



- Carefully peel back the two copper sticky grounding strips near the LED module.
- Swing the outer aluminium case up and carefully slide it towards the connector side of the logic board until it comes off. Remove the two Phillips #0 screws securing the LED module.
- Carefully unplug the module from the logic board and remove it from the case.

Step 6



- There are two miniature SMD LEDs. One is clear and one is yellow. Unsolder the YELLOW colored LED. Replace with another high intensity SMD LED. The anode (+) is marked on the circuit board and is located away from the infrared receiver side.
- ① SMD LEDs are difficult to find as a spare part. You can carefully ground down a normal sized LED with a Dremil until it is the correct fit.
- Reassemble the Apple TV following the reverse of these to steps used to disassemble it.

To reassemble your device, follow these instructions in reverse order.