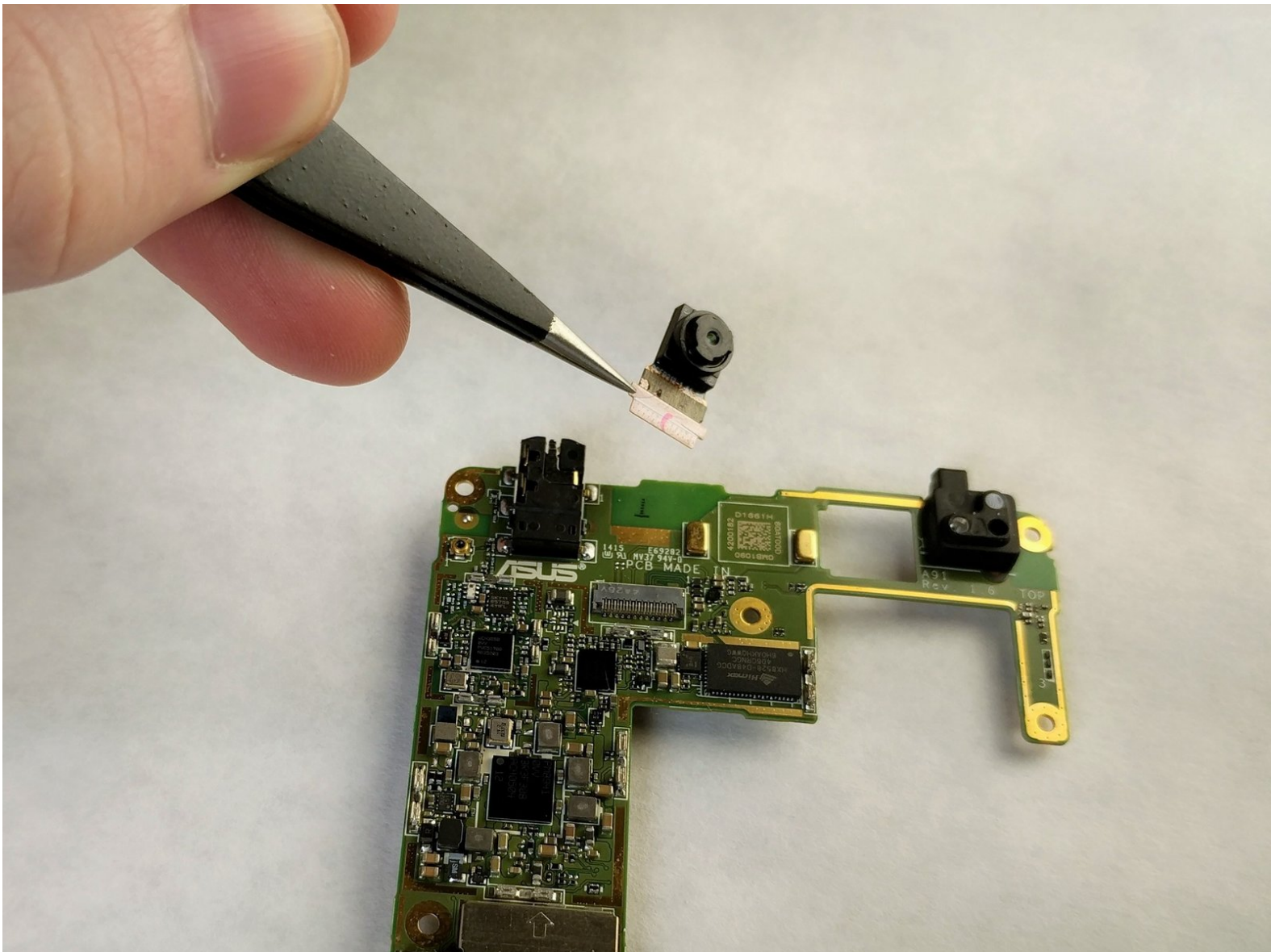




# ASUS PadFone X Motherboard Replacement

This is a replacement guide for the PadFone X motherboard.

Written By: Ryan



# INTRODUCTION

This guide is going to show the necessary steps for replacing the Motherboard.



## TOOLS:

- [iFixit Opening Tools](#) (1)
- [T5 Torx Screwdriver](#) (1)
- [Tweezers](#) (1)



## PARTS:

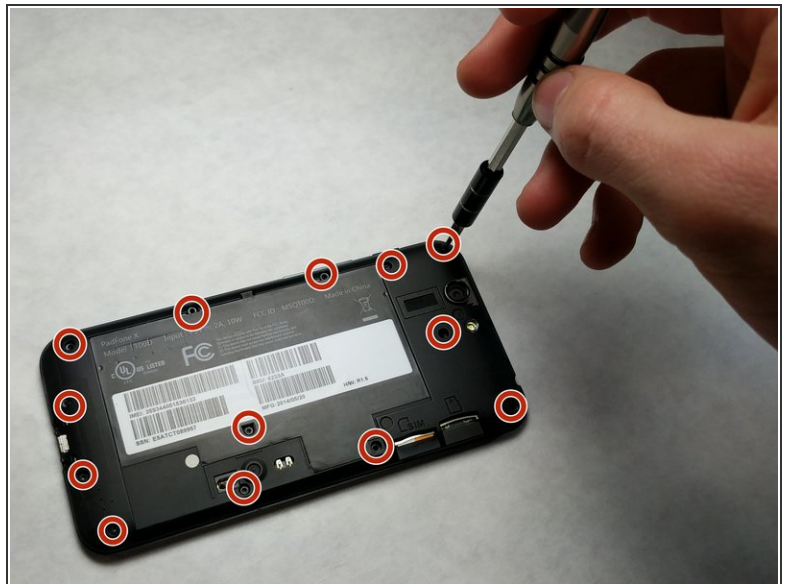
- [New PadFone X Front Facing Camera](#) (1)

## Step 1 — Motherboard



- Using the blue plastic opening tool, insert the tip into the crease between the back cover and the phone and pry it upwards.
- Work your way around the phone until the entire back cover is loose.

## Step 2



- Remove the thirteen 3.6 mm screws using the Torx T5 bit in the screwdriver.

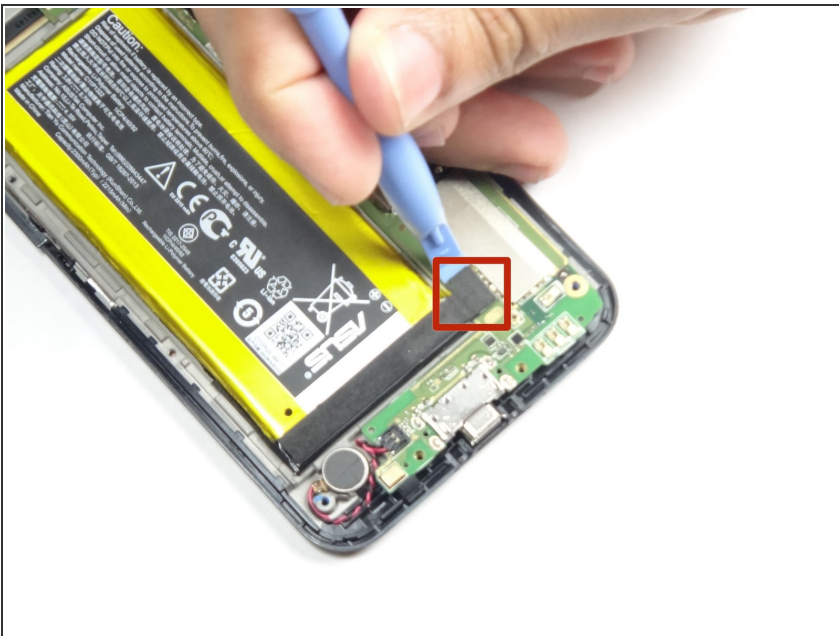


### Step 3



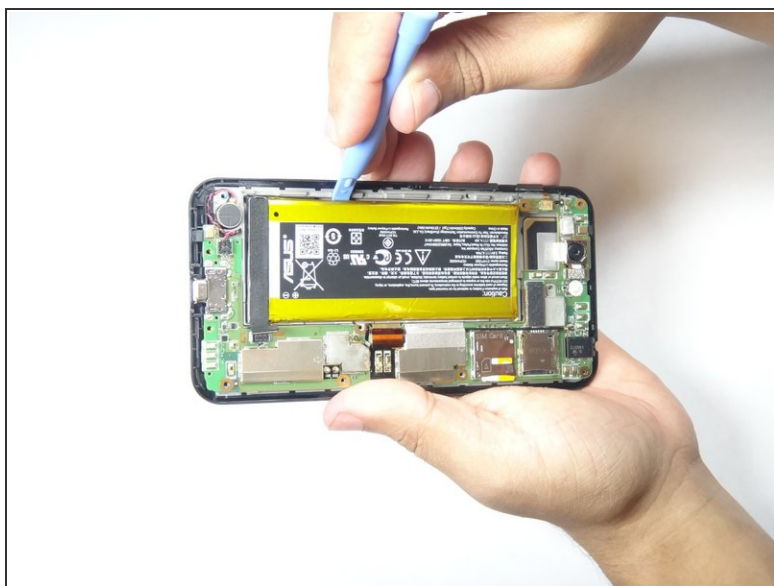
- Using the blue plastic opening tool, insert the tip into the crease between the mid-frame and the phone and pry it upwards.
- Work your way around the phone until the entire back cover is loose and remove the mid-frame.

### Step 4



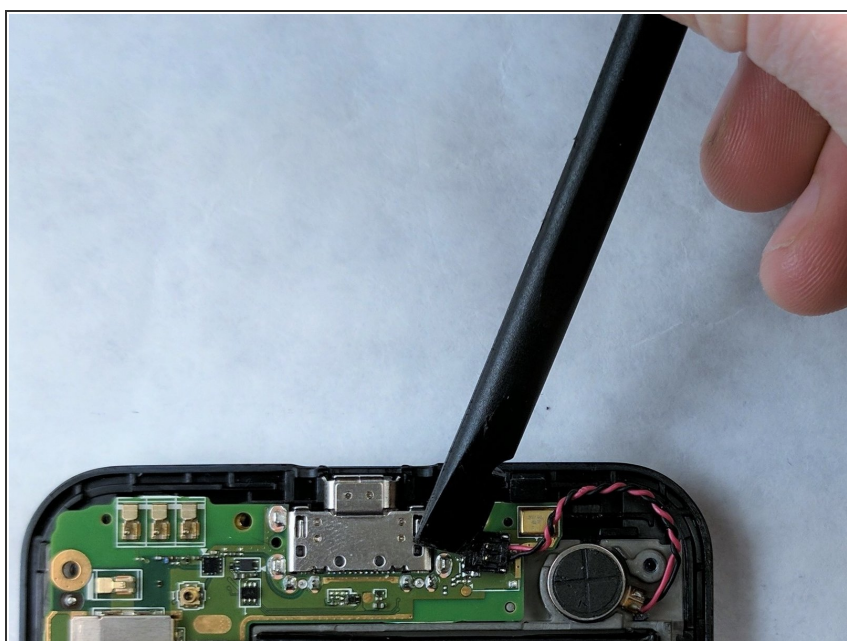
- Using the plastic blue plastic opening tool, gently disconnect the battery cable from the motherboard.
- ⚠ Applying too much force will damage the connector.

## Step 5



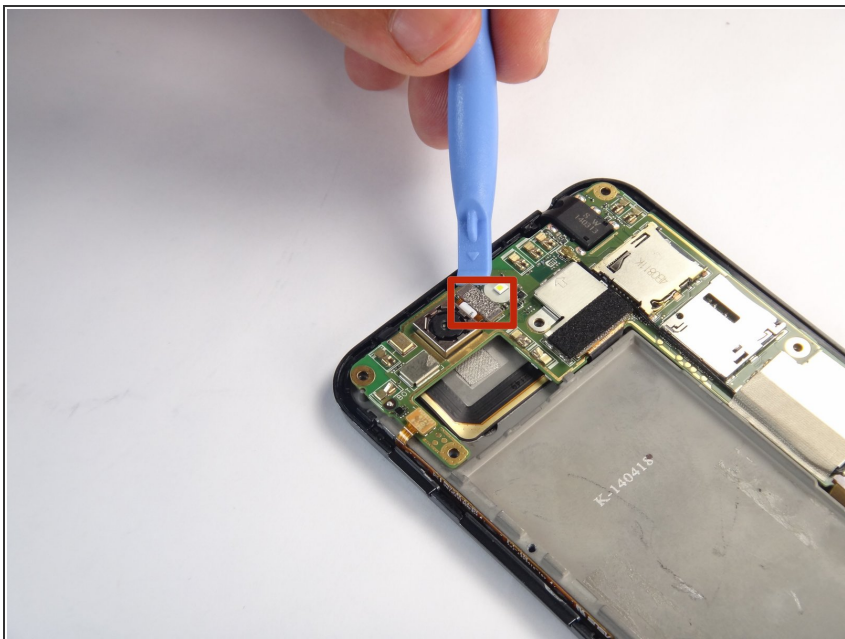
- Use the blue plastic opening tool to pry the battery pack from the phone. Pry along edge away from the motherboard as this might damage the motherboard.
- ⓘ The battery pack is held on by double sided tape, you will have to apply some force when prying out the battery.

## Step 6



- Using a spudger, pry the vibration motor connector from the motherboard.

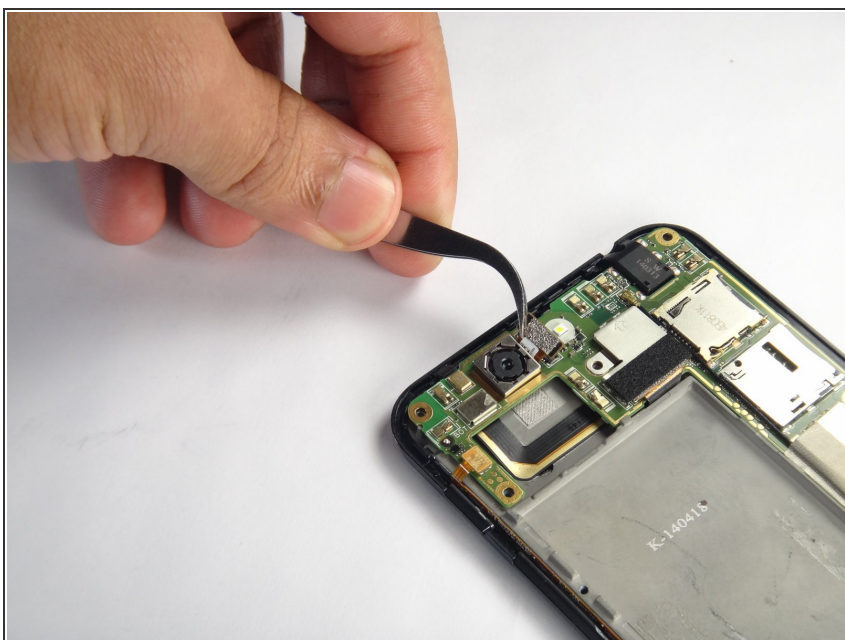
## Step 7



- Use the blue plastic opening tool to gently pry the camera connector up from its socket on the motherboard.

⚠ Applying too much force will damage the connector

## Step 8

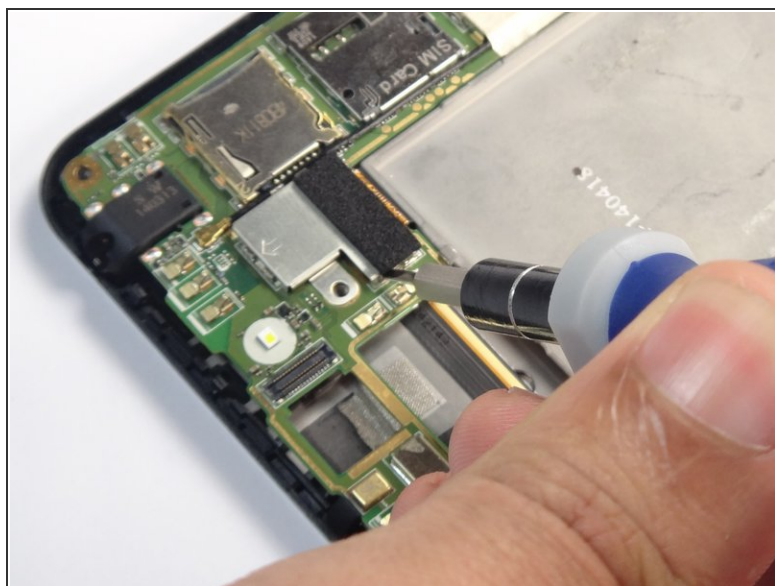
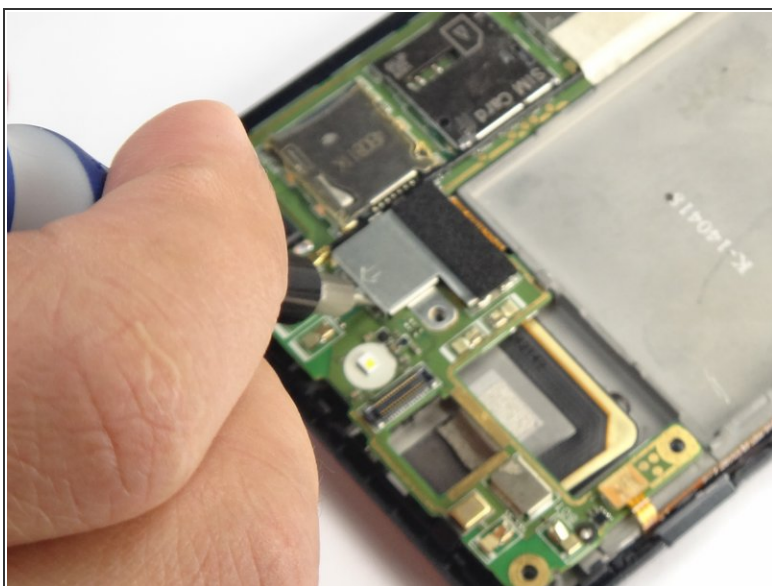


- Using the tweezers, remove the rear camera from the Padfone X.

ⓘ The camera is lightly glued to the motherboard. You may need to use a plastic opening tool to loosen the adhesive under the camera.

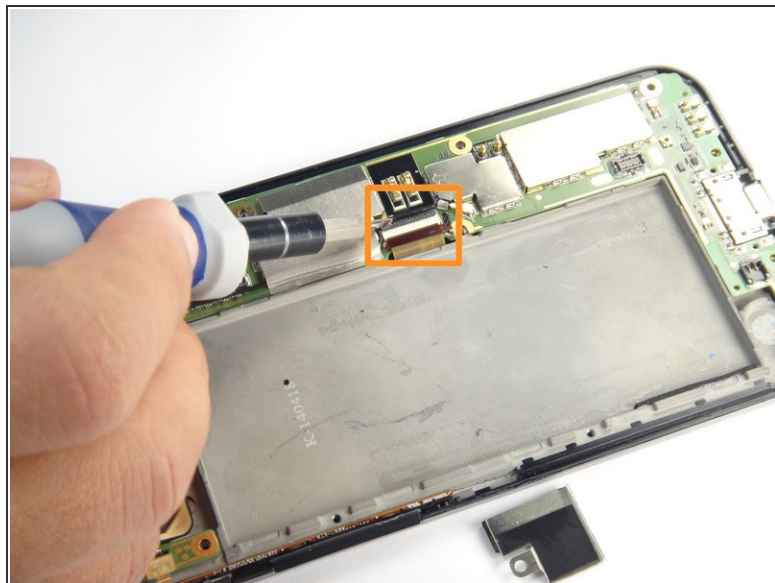


## Step 9



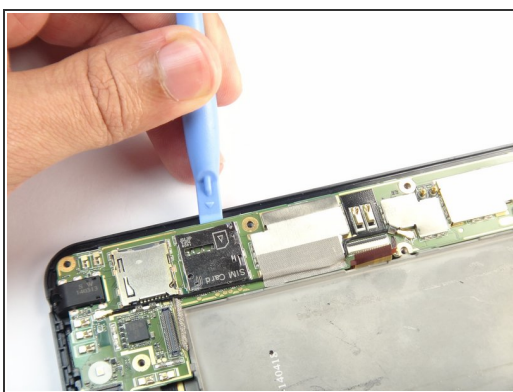
- Insert the tip of the flat head screwdriver between the panel and the metal clip then gently push down until the clip is slightly bent away from the panel.
- Do this for all the clips holding the panel down.
- After all clips are bent away, remove the panel.

## Step 10



- Disconnect the first connector by prying it upward using the blue plastic opening tool.
- Disconnect the second connector by first lifting the lock then pulling the connector outward.

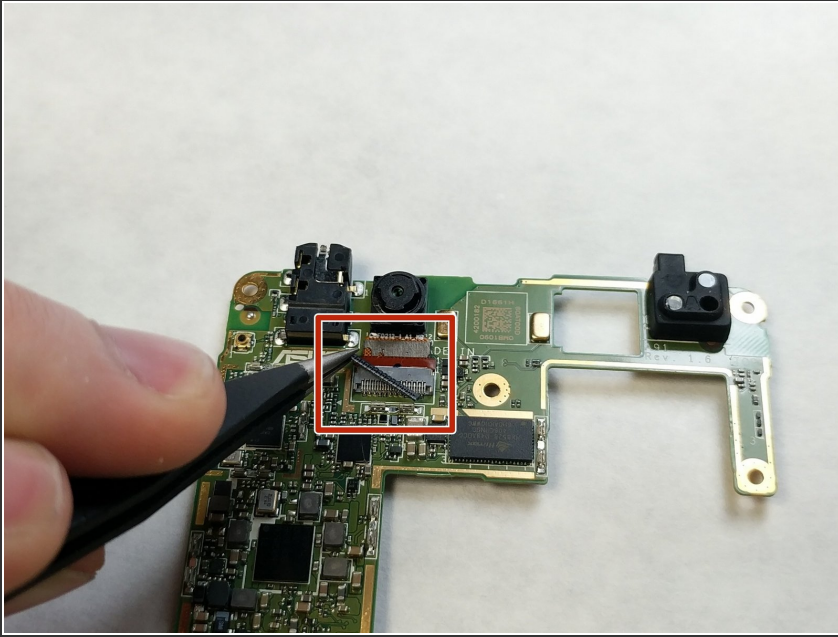
## Step 11



- Insert the tip of the blue plastic opening tool under the motherboard and gently pry upward.
- Work your way around until the motherboard is free.

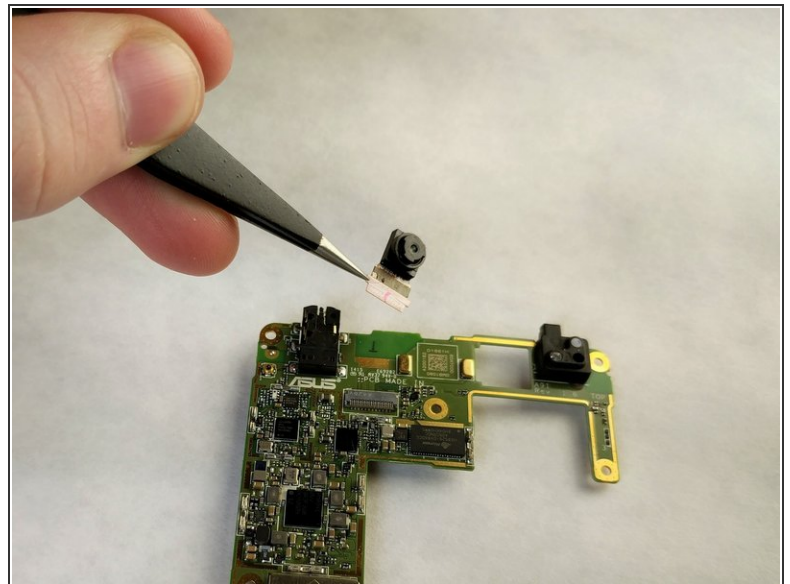
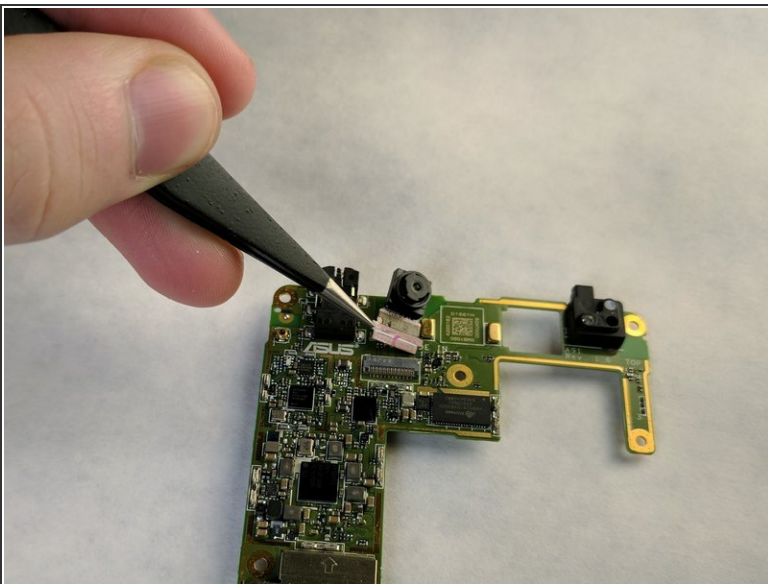


## Step 12



- Flip the motherboard over and locate the front facing camera.
- Using the tweezers gently remove the black locking mechanism.
- ⚠ The black locking mechanism is very fragile and extreme care should be exercised during removal.

## Step 13



- Use the tweezers to gently pull on the connector to remove the camera.

To reassemble your device, follow these instructions in reverse order.