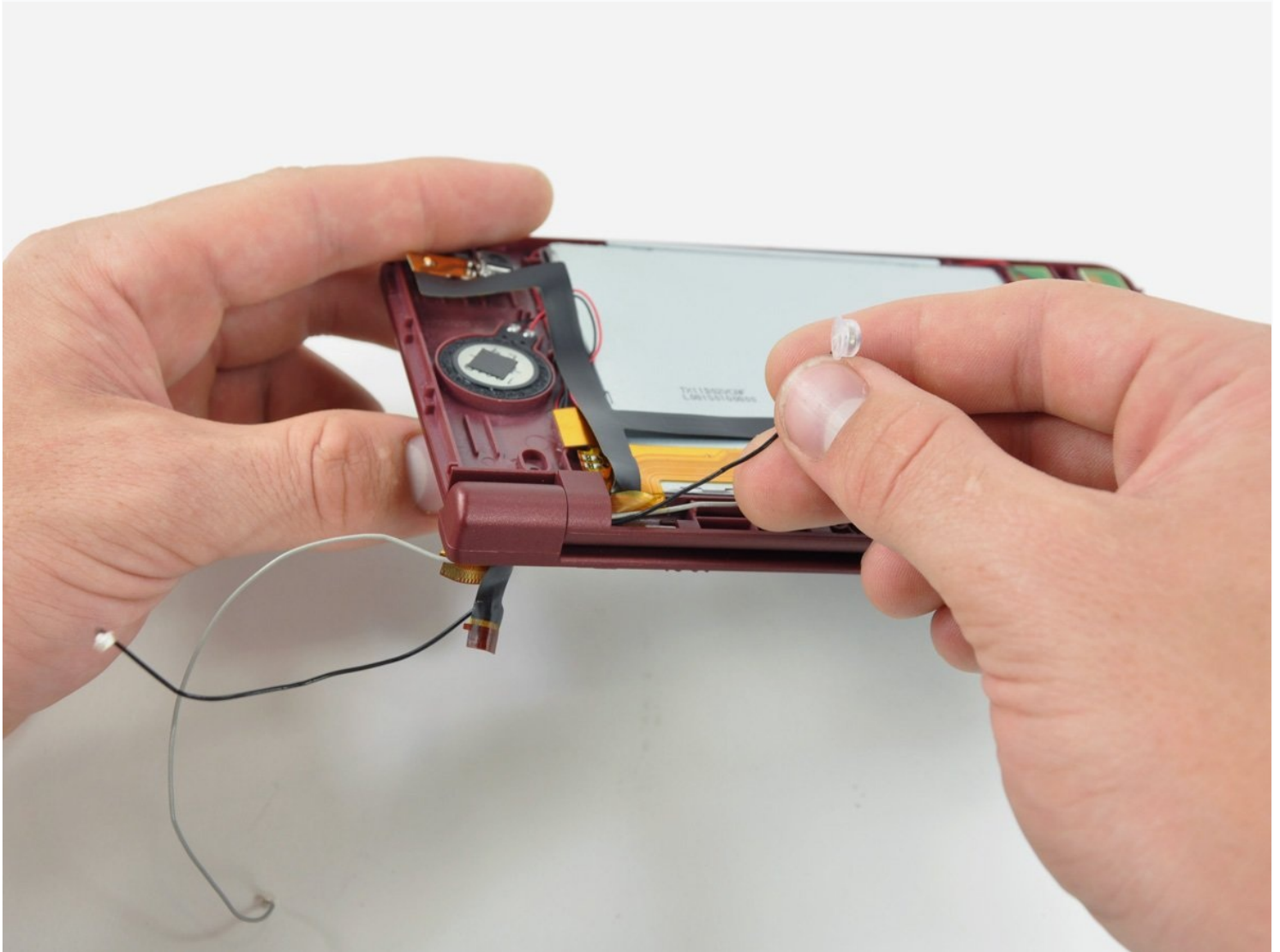




Nintendo DSi XL Microphone Replacement

Use this guide to replace a faulty microphone...

Written By: David Hodson



INTRODUCTION

Use this guide to replace a faulty microphone in your DSi XL.

TOOLS:

Phillips #00 Screwdriver (1)

Push Pin (1)

Spudger (1)

PARTS:

Nintendo DSi XL Microphone (1)

Step 1 — Battery



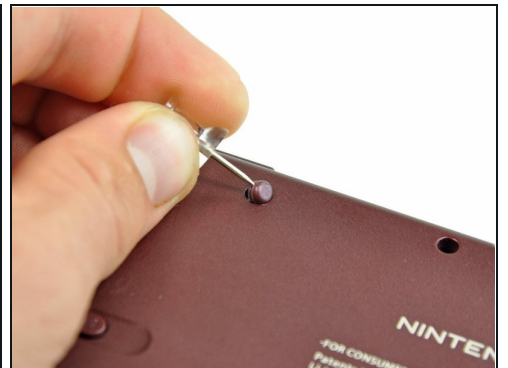
- Remove the two Phillips screws securing the battery cover to the back of the handheld console.
- Lift the battery cover off the back of the DSi XL.

Step 2



- Lift the battery from the DSi XL.

Step 3 — Lower Case



- Remove the four rubber screw covers on the lower case by prying them up with a push pin.

Step 4



- Remove the following seven Phillips screws that secure the lower case to the rest of the DSi XL:
 - Four silver 5.3 mm screws
 - Two black 5.3 mm screws
 - One black 2.5 mm screw

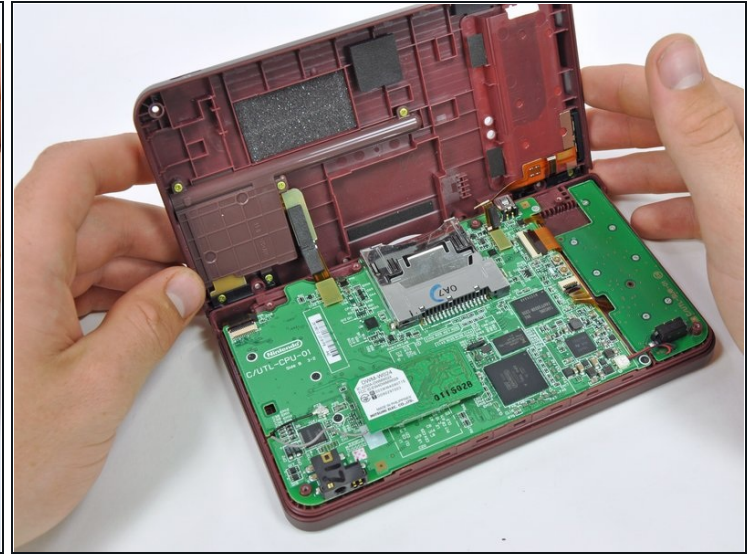
Step 5



① Turn the DSi XL over, and open the display.

- Insert a spudger between the upper and lower case at the bottom left corner of the DSi.
- Slide the spudger along the bottom edge of the upper case to release the latches securing the upper case to the lower case.

Step 6

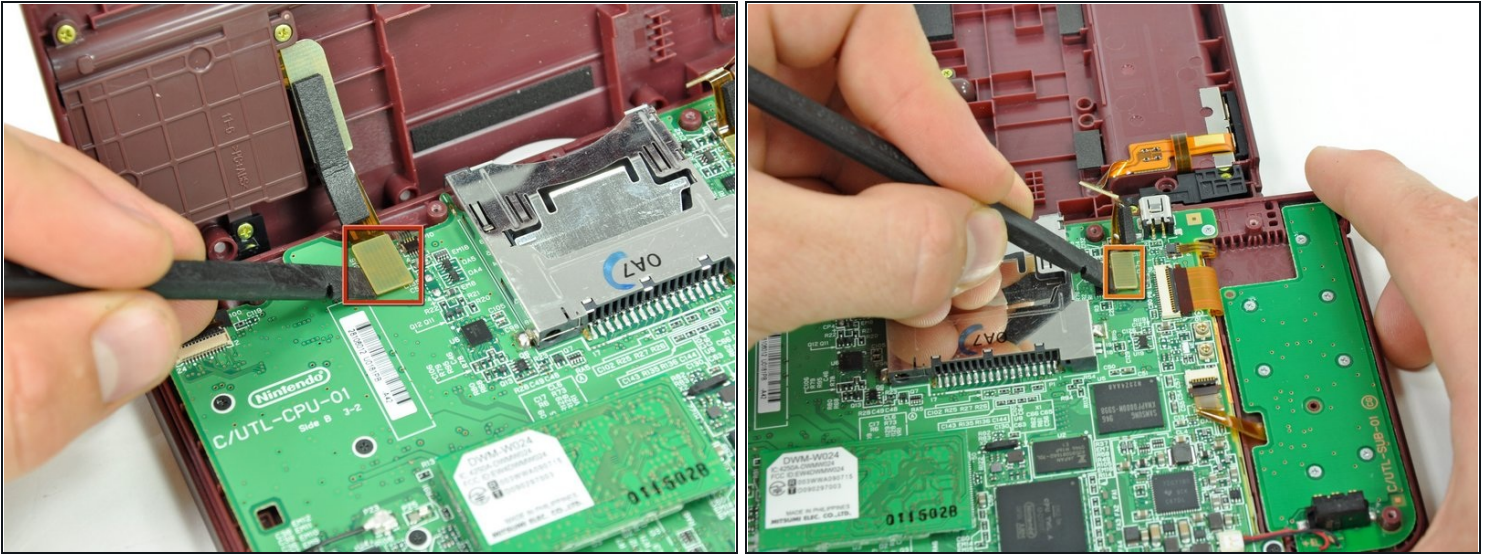


① Close the display and turn the DSi XL over.

- Lift the lower case from the front edge.
- Rotate the lower case away from the DSi.

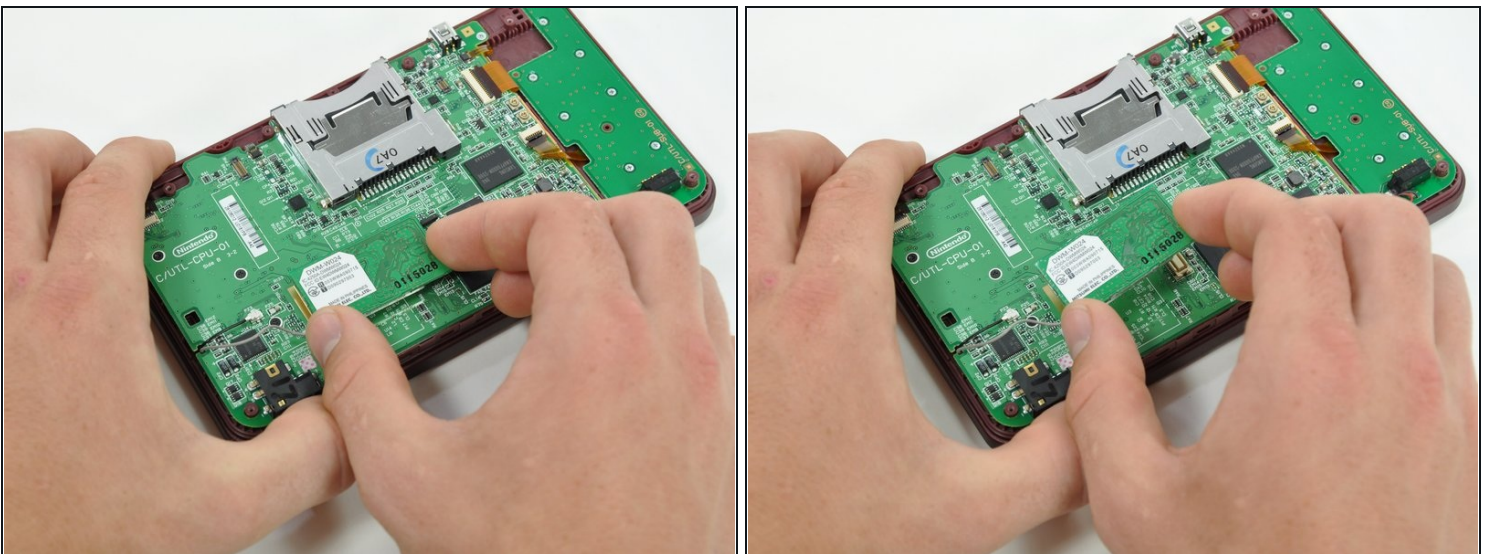
① The lower case cannot be completely removed yet, since it is still connected to the motherboard.

Step 7



- Using a spudger, pry the SD card/right shoulder button connector off its socket.
- Pry the volume button/left shoulder button connector off its socket on the motherboard with a spudger.

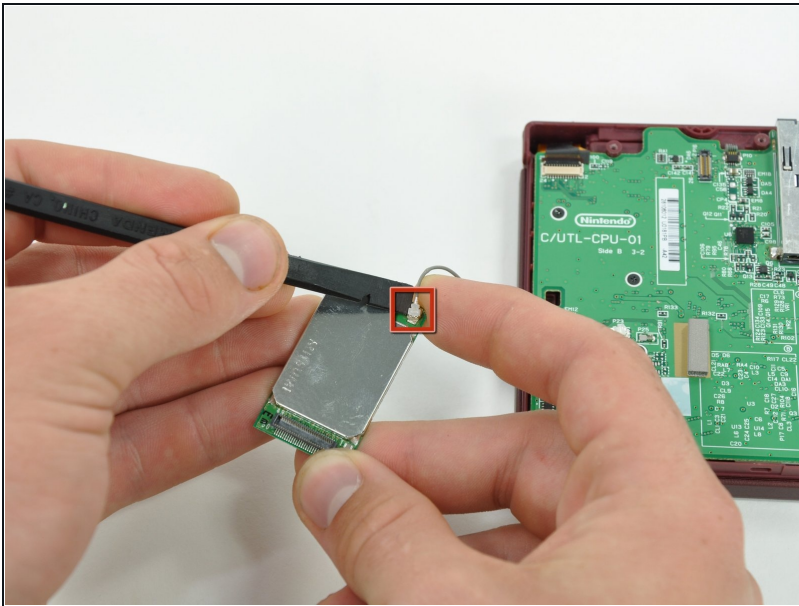
Step 8 — Wi-Fi Board



- Lift the Wi-Fi board up off its socket on the motherboard.

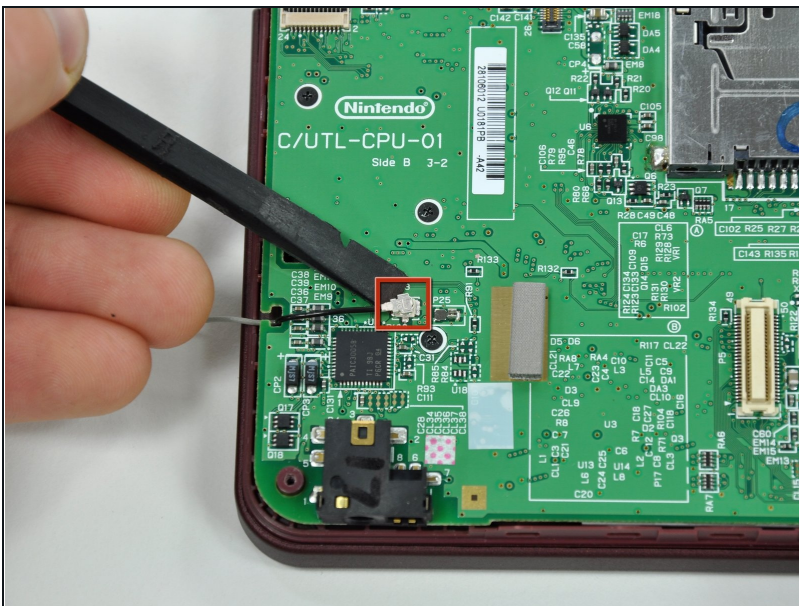
⚠ Do not attempt to completely remove the Wi-Fi board yet. It is attached to the motherboard by an antenna cable.

Step 9



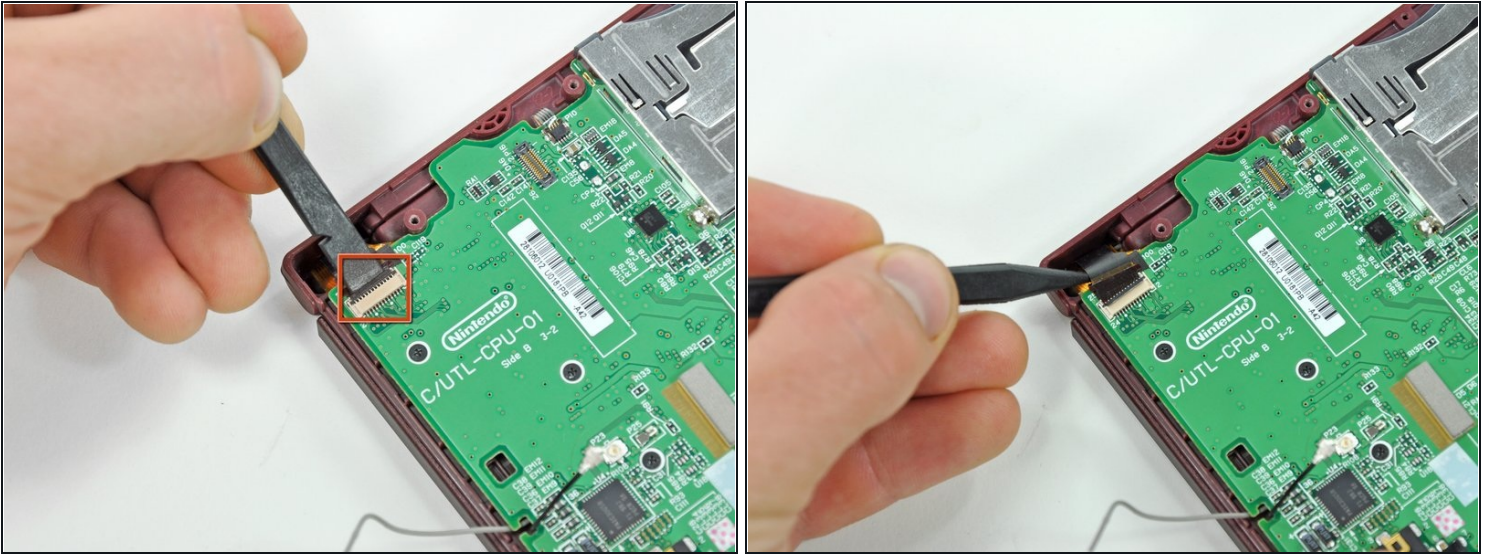
- Use a spudger to pry the Wi-Fi cable off its socket on the underside of the Wi-Fi board.

Step 10 — Motherboard



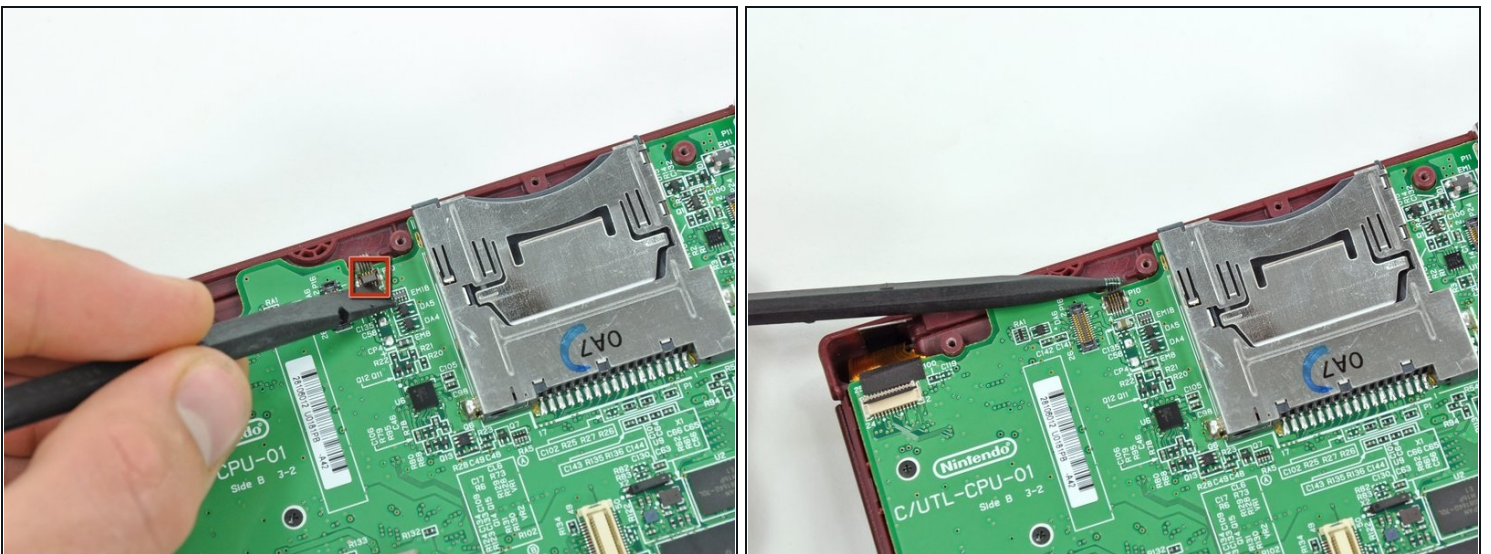
- Use a spudger to pry the microphone cable off the motherboard.
- ① Pry from underneath the cable.

Step 11



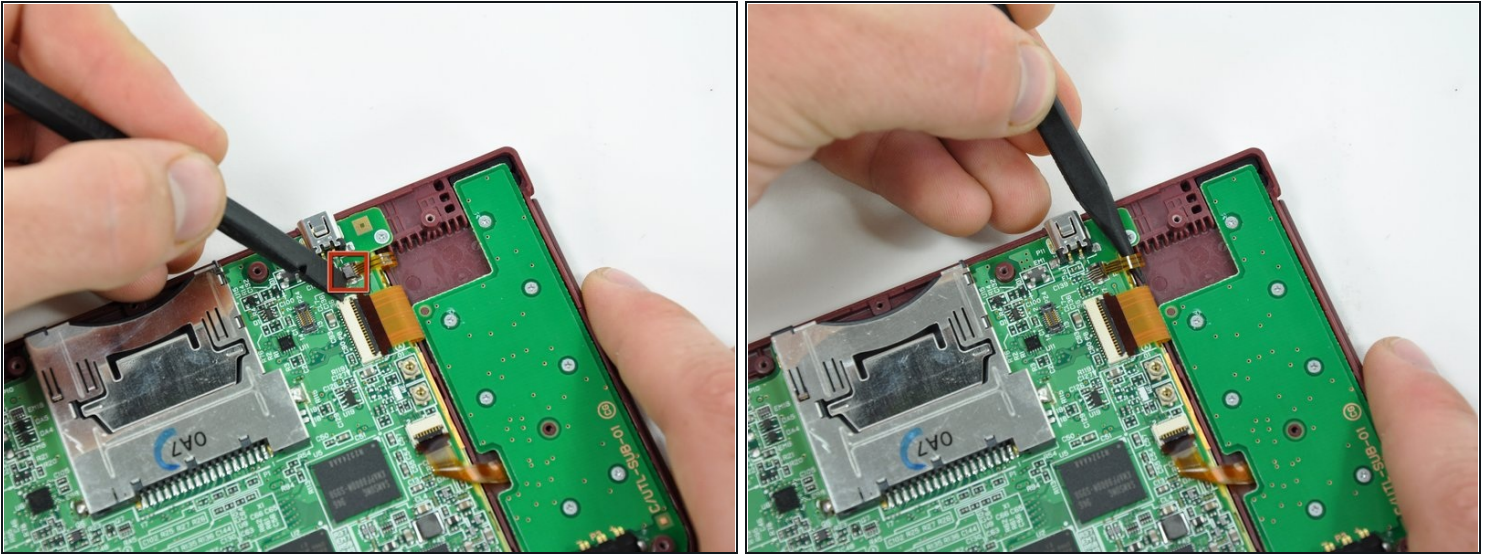
- Using the flat end of a spudger, flip up the retaining flap on the camera ribbon ZIF connector.
- Use the pointed end of a spudger to pull the camera ribbon from the ZIF connector.

Step 12



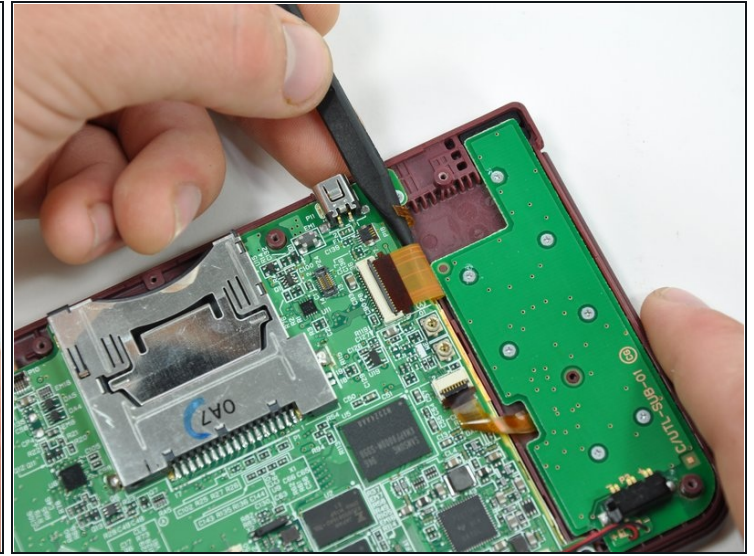
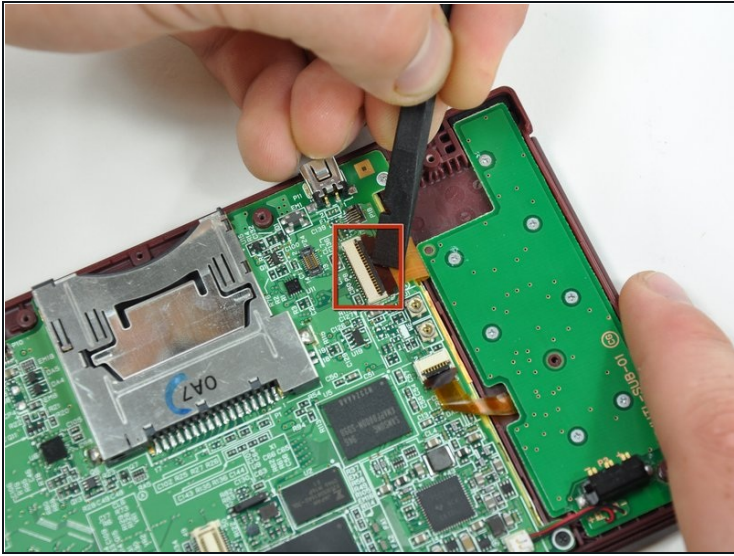
- Using the flat end of a spudger, flip up the retaining flap on the touchscreen cable ZIF connector.
- With the pointed end of the spudger, pull the touchscreen cable from its connector on the motherboard.

Step 13



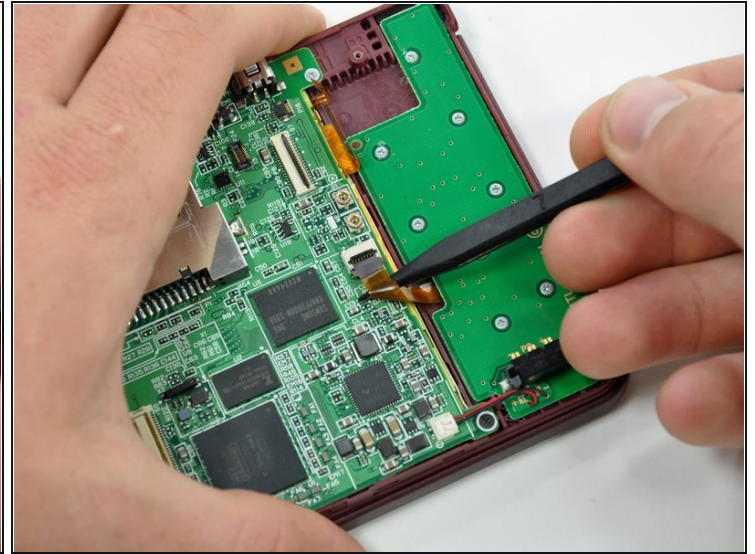
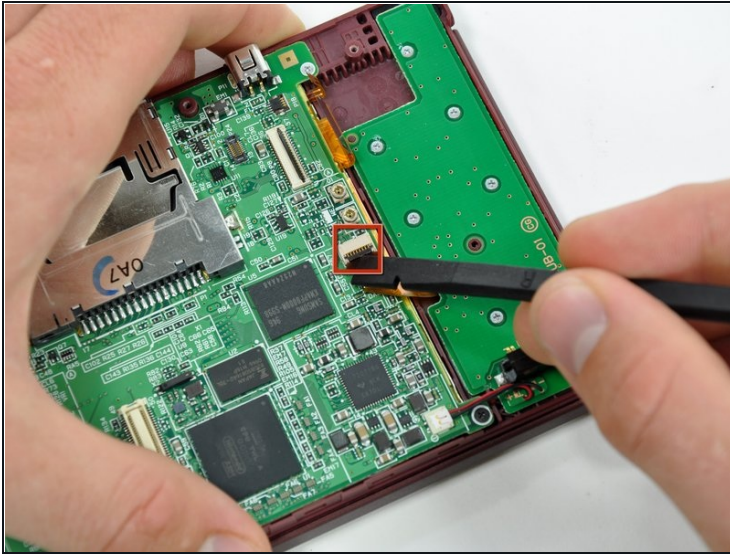
- Using the flat end of a spudger, flip up the retaining flap on the backlight cable ZIF connector.
- With the pointed end of the spudger, pull the backlight cable from its connector on the motherboard.

Step 14



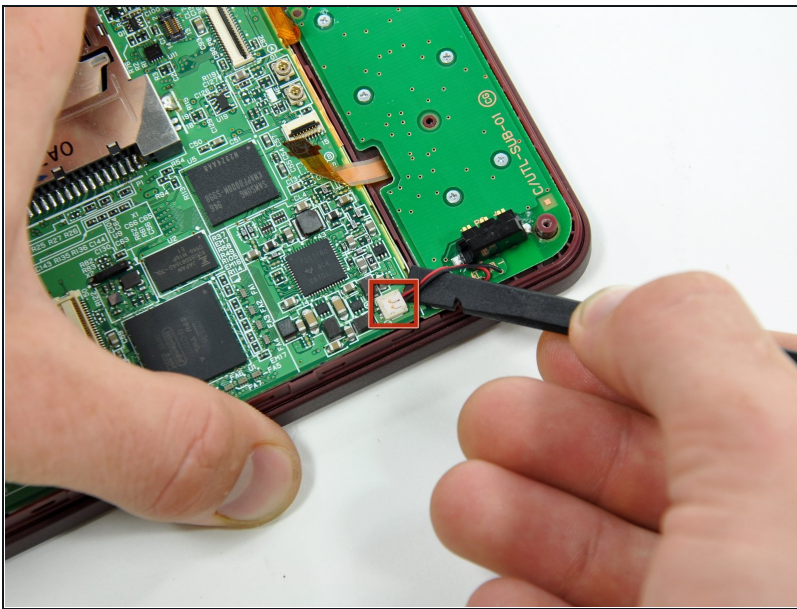
- Using the flat end of a spudger, flip up the retaining flap on the lower display data cable ZIF connector.
- With the pointed end of the spudger, pull the lower display data cable from its connector on the motherboard.

Step 15



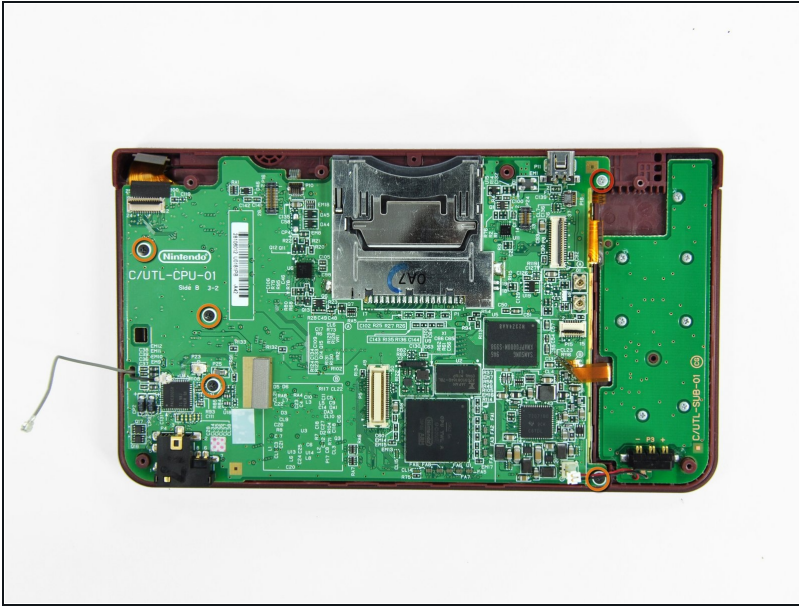
- Using the flat end of a spudger, flip up the retaining flap on the ZIF connector for the D-Pad/power button cable.
- With the pointed end of the spudger, pull the D-Pad/power button cable from its connector on the motherboard.

Step 16



- Using the flat end of the spudger, pry the battery cable up off its socket on the motherboard.

Step 17



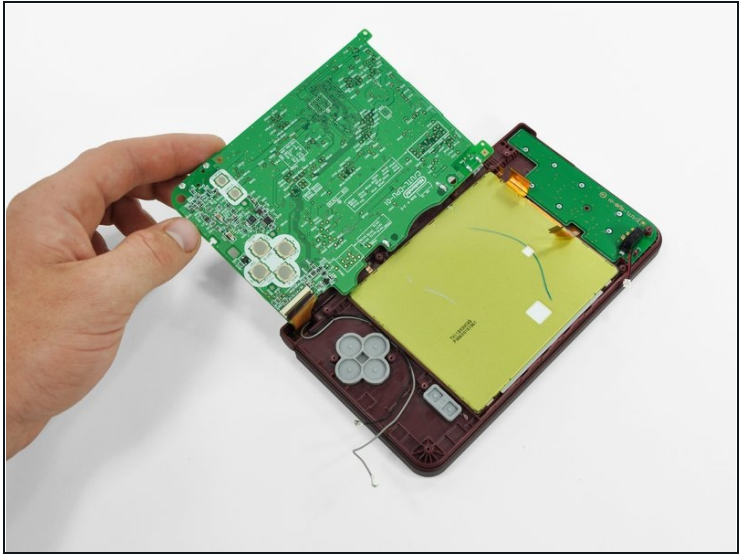
- Remove the screws securing the motherboard to the upper case:
 - A single 2.5 mm silver Phillips screw
 - Four 3.7 mm black Phillips screws

Step 18



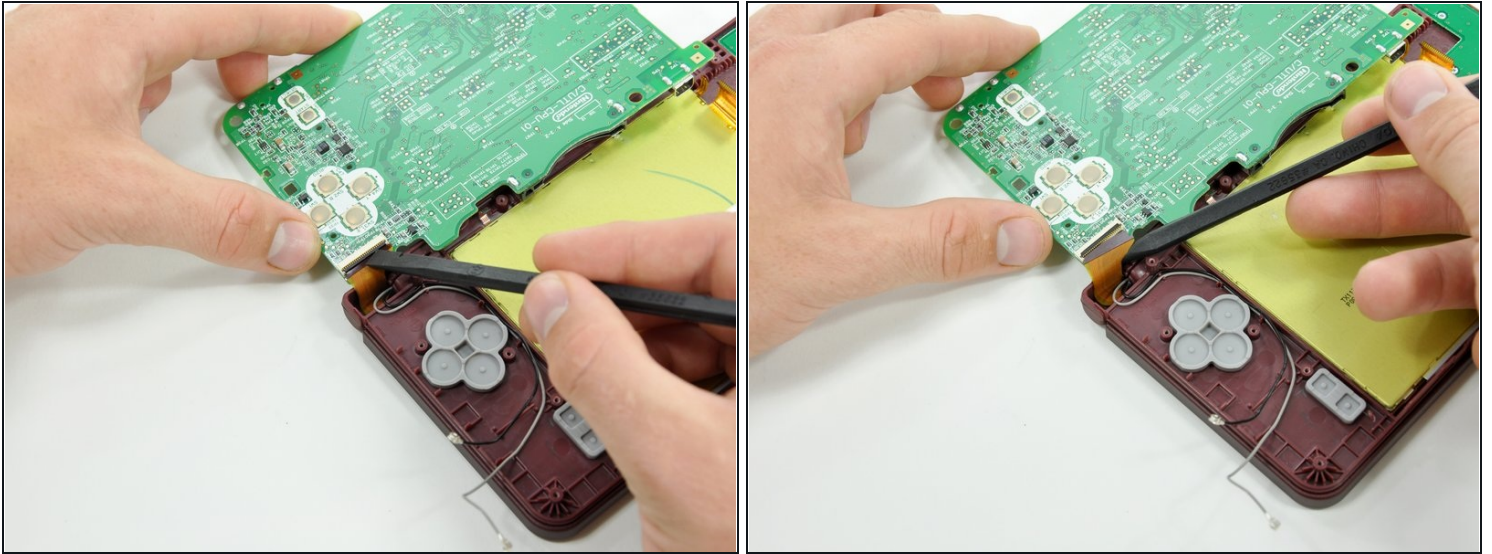
- Deroute the microphone and antenna cables through the slot in the motherboard.

Step 19



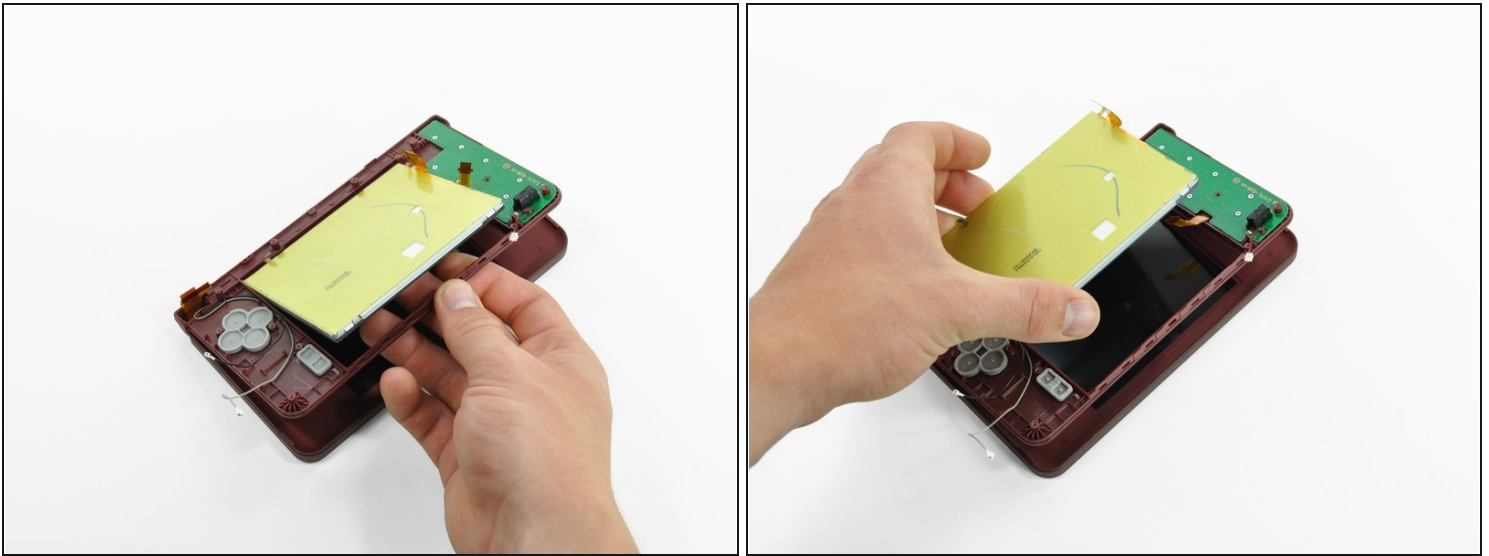
- Rotate the motherboard off the lower case.
- ① The motherboard cannot be completely removed yet. It is still attached by the upper LCD's display data ribbon cable.

Step 20



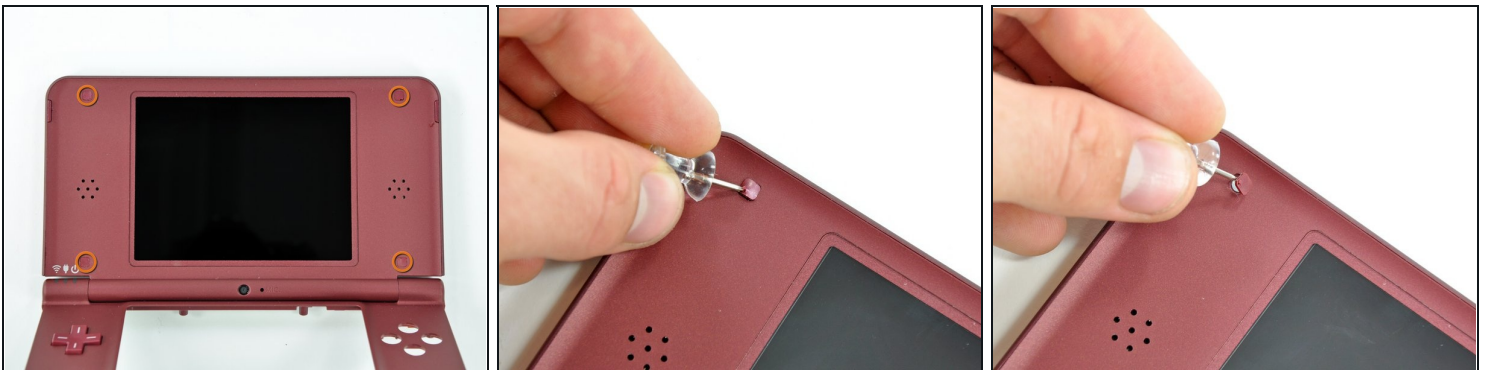
- Using the flat end of a spudger, flip up the retaining flap on the upper display data cable ZIF connector.
 - With the pointed end of the spudger, pull the upper display data cable from its connector on the underside of the motherboard.
- ① The motherboard is now free from the upper case.

Step 21 — Lower Display Assembly



- With the console still upside-down, open the DSi XL slightly.
- Push the lower display away from the upper case.
- Remove the lower display from the DSi XL.

Step 22 — Rear Bezel



- Turn the DSi XL over and open the display.
- ☒ When re-assembling the device, be sure to re-install the ABXY and Start/Select buttons, as they are likely to fall out once the handheld console is turned over.
- Use a pushpin to remove the four plastic screw covers on the front bezel.

Step 23



- Remove the four 3.5 mm silver Phillips screws securing the rear bezel to the front bezel.

Step 24



- Using two hands, gently slide the rear bezel upwards.
- ⓘ The rear bezel will move only about 2 mm.

Step 25



- Insert a spudger into the gap between the front and rear bezel.
- Rotate the spudger away from the DSi XL, prying the two bezels apart.

Step 26



- In the same manner as described above, continue prying along the top edge of the front and rear bezels.

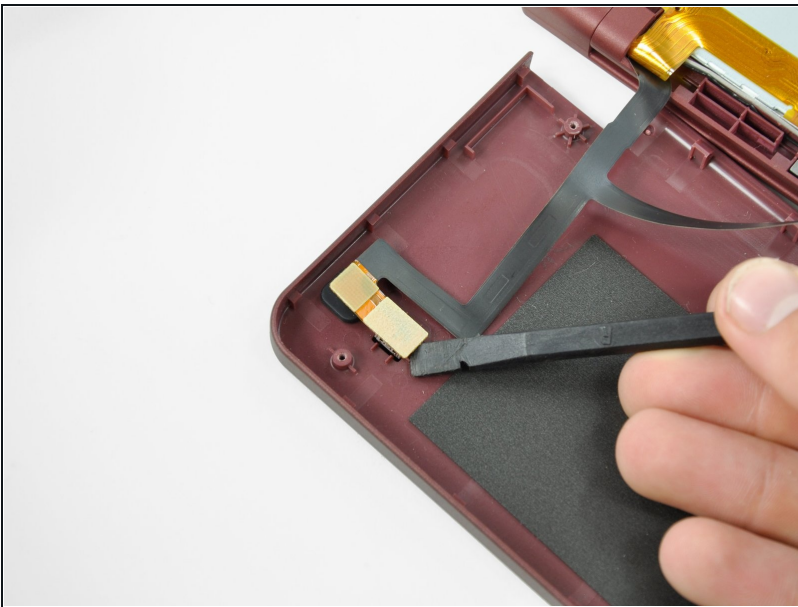
Step 27



- Separate the rear bezel from the front bezel.

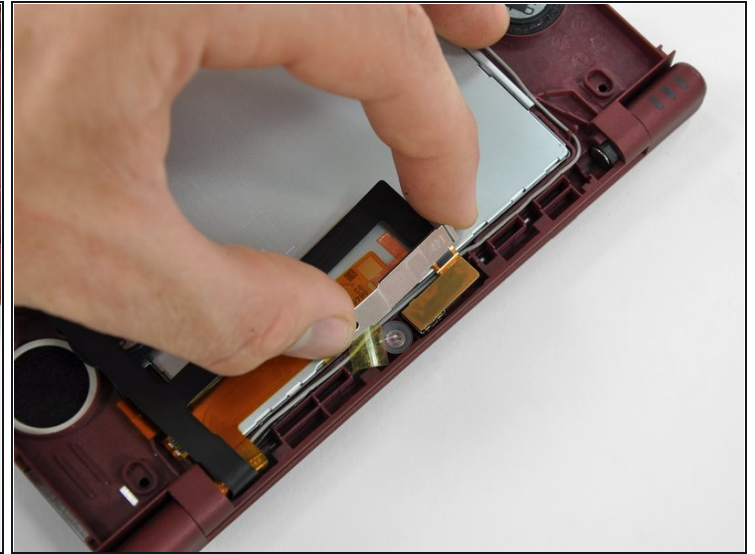
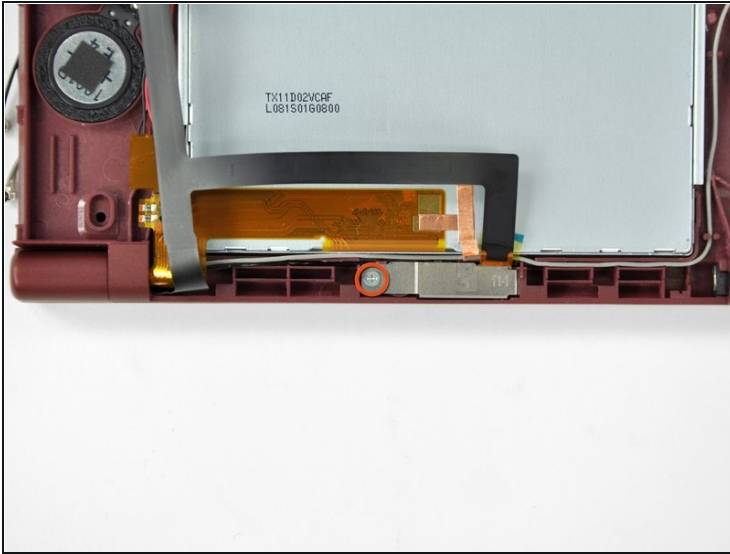
⚠ Do not attempt to completely remove the rear bezel yet. It is still attached to the front bezel by the rear-facing camera.

Step 28



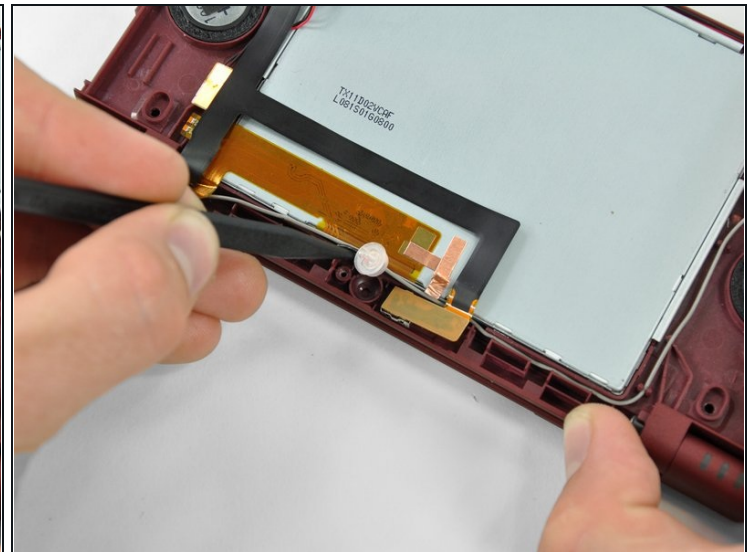
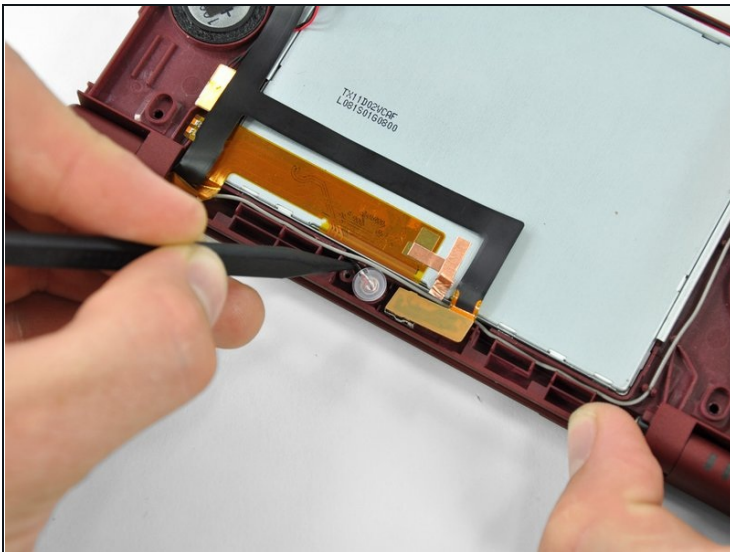
- Using the flat end of a spudger, pry the rear camera off the rear bezel.
- Remove the rear bezel.

Step 29 — Microphone



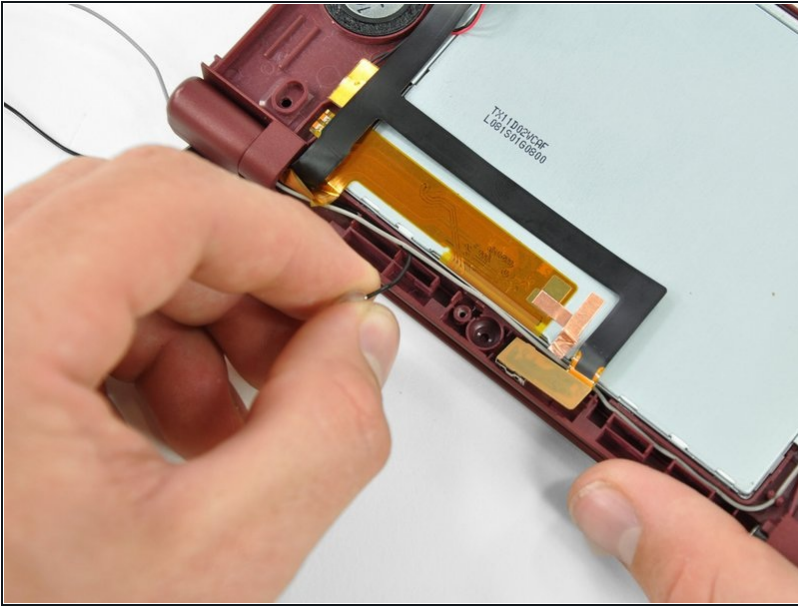
- Remove the Phillips screw holding the metal securing bracket in place.
- Lift the metal bracket off the camera.

Step 30



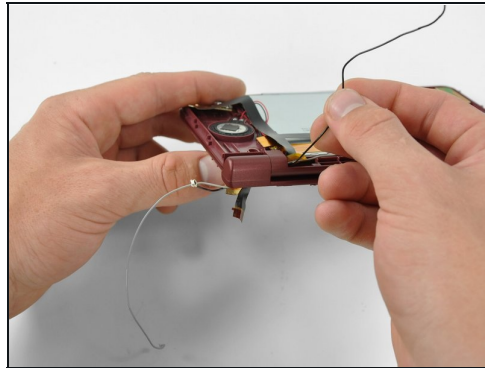
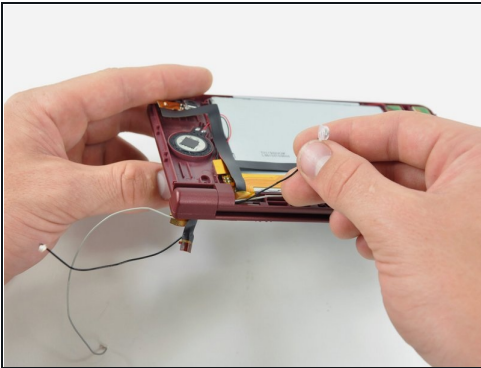
- Use the tip of a spudger to lift the microphone from its seat on the front display bezel.

Step 31



- De-route the microphone cable.

Step 32



- Pull the microphone cable through the right hinge connecting the front bezel and upper case.
 - Use the pointed end of a spudger to guide the connector at the end of the microphone cable through the hinge.
- ☒ To replace the microphone, use a pair of [tweezers](#) to guide the connector through the hinge.

To reassemble your device, follow these instructions in reverse order.