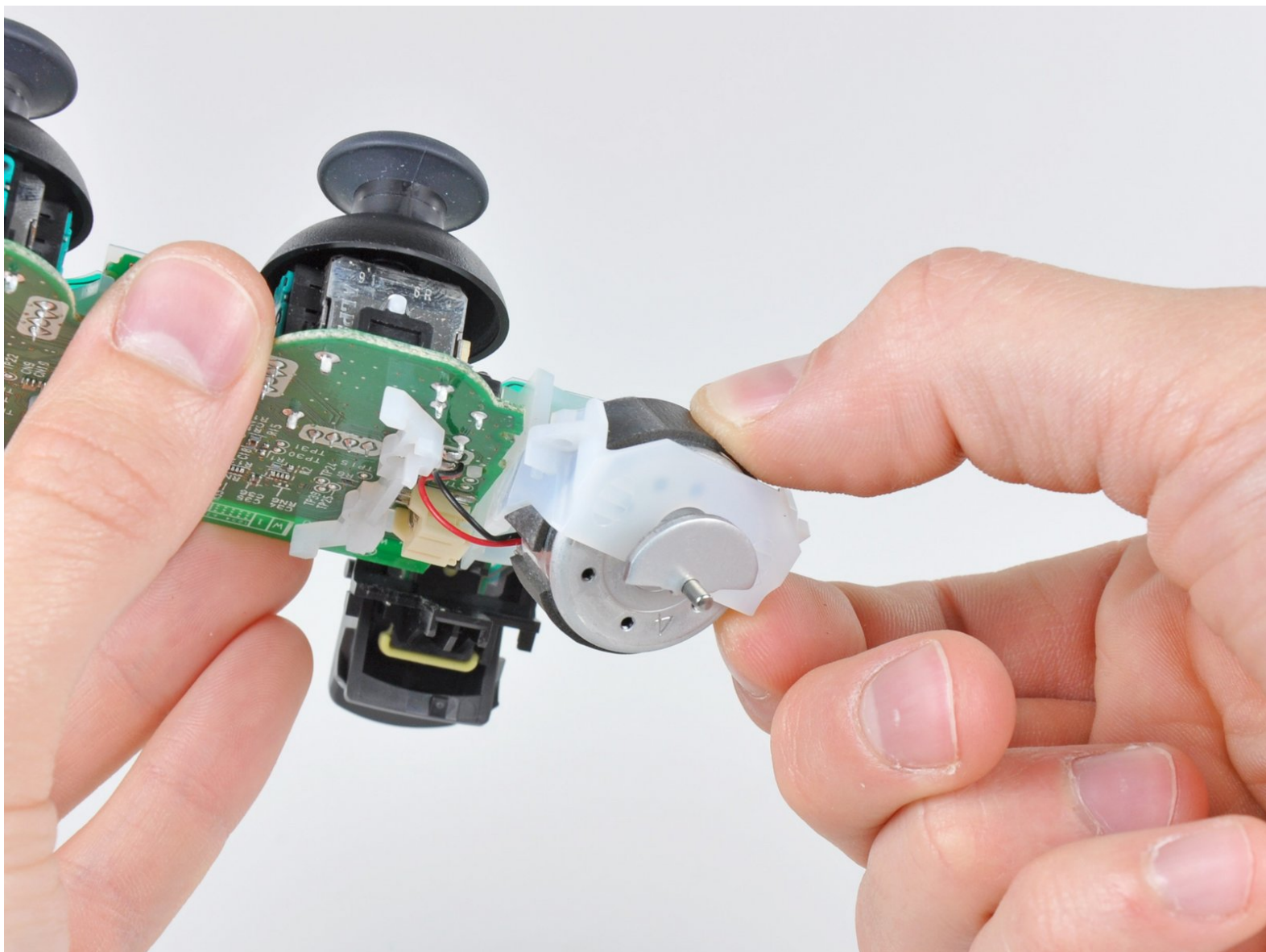




DualShock 3 Input Board Replacement

Replace the thin board responsible for sending signals from buttons to the motherboard.

Written By: Andrew Bookholt



INTRODUCTION

Use this guide to replace the thin plastic input board and its plastic frame. A new input board will provide new electrical contacts for every button except for the analog sticks.

TOOLS:

- [Phillips #0 Screwdriver](#) (1)
 - [Tweezers](#) (1)
-

Step 1 — Rear Cover



- Remove the five 7.2 mm Phillips screws securing the rear cover to the controller.

Step 2



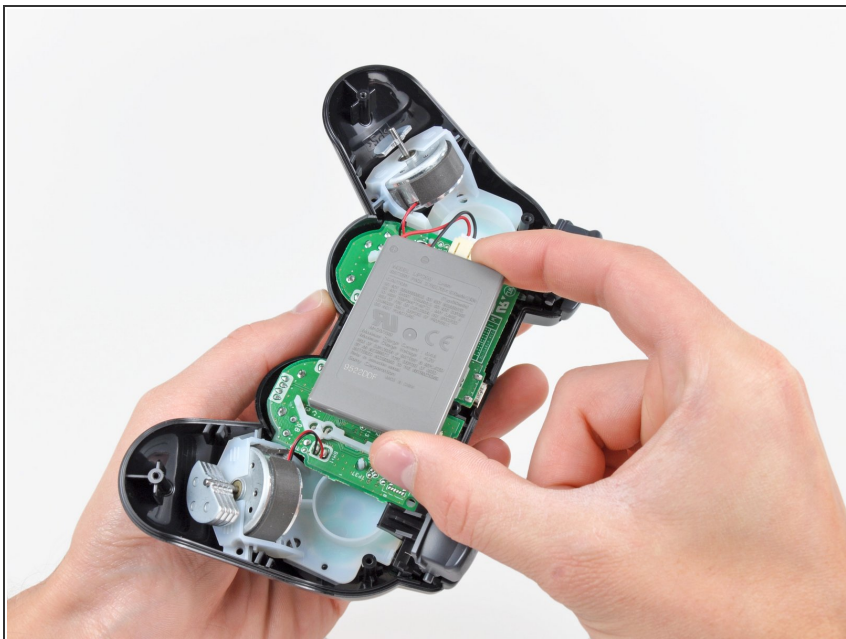
- Press on the rear cover between the analog sticks and slightly lift the lower edge of it away from the rest of the controller.

Step 3



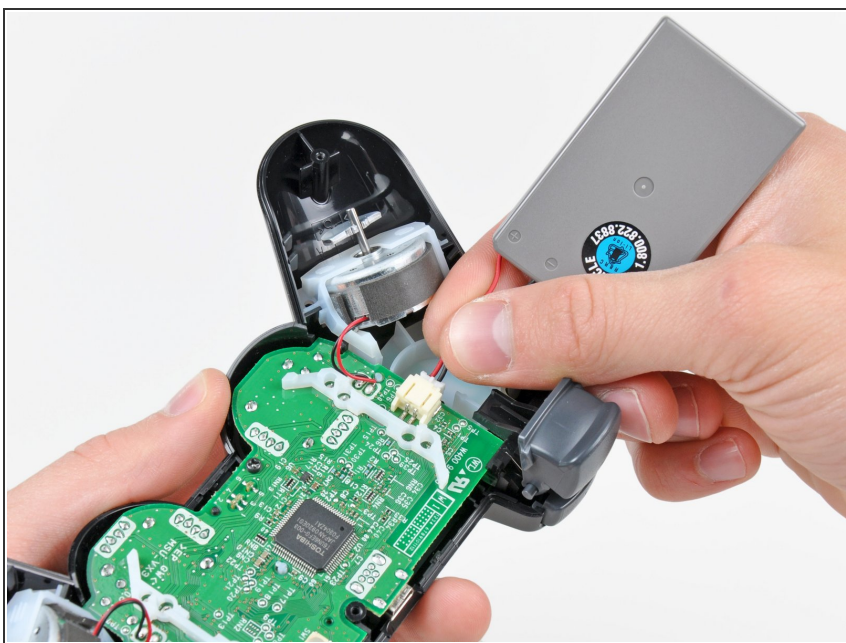
- Push the rear cover slightly toward the top edge of the controller to clear the front edge of the #2 triggers.
 - Pull the rear cover away from the rest of the controller, being careful not to pop off the #2 triggers.
- i** If you happen to accidentally pop off the trigger buttons, we have a [trigger button guide](#) to reattach them.

Step 4 — Battery



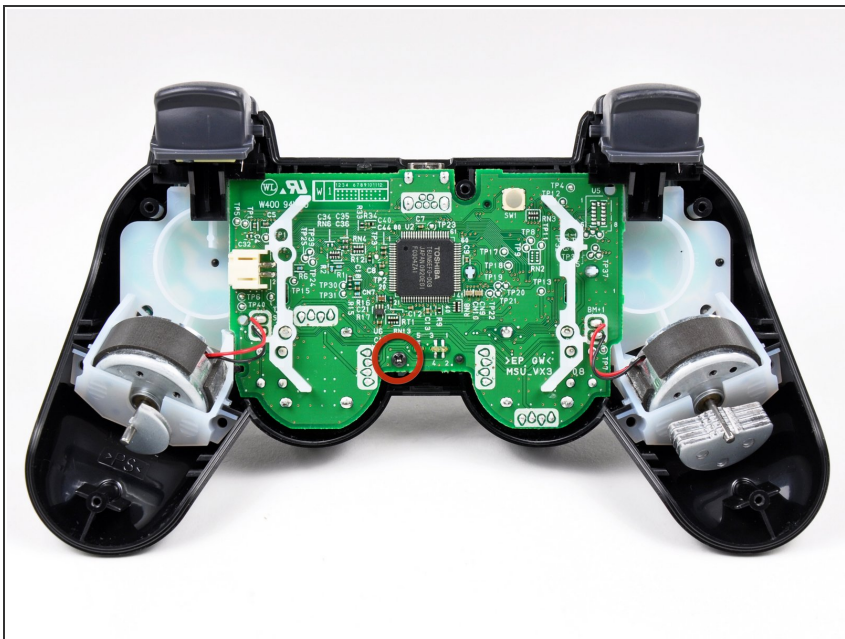
- Lift the battery off the motherboard for enough clearance to access the battery connector.

Step 5



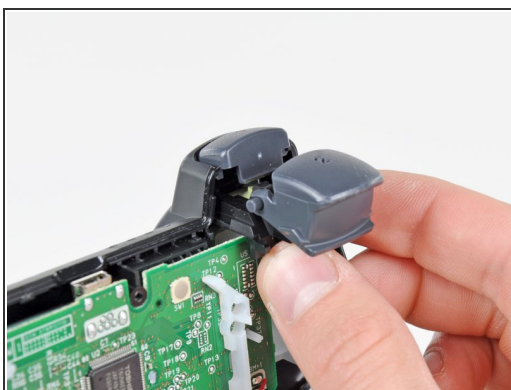
- Carefully pull the battery connector away from its socket on the motherboard.
- ⓘ It may be helpful to use a pair of tweezers or pliers to grab the battery connector when you disconnect it for the first time. Only pull on the connector. Do not try to remove by pulling on the red and black wires.

Step 6 — Motherboard Assembly



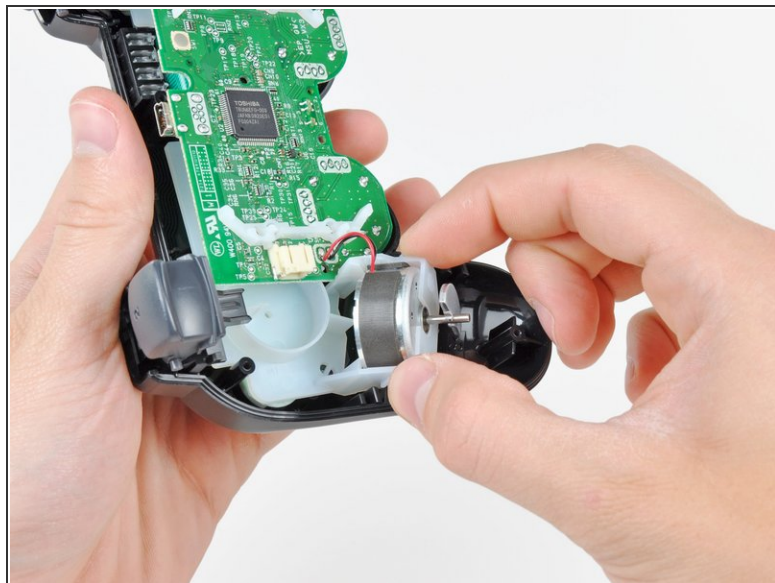
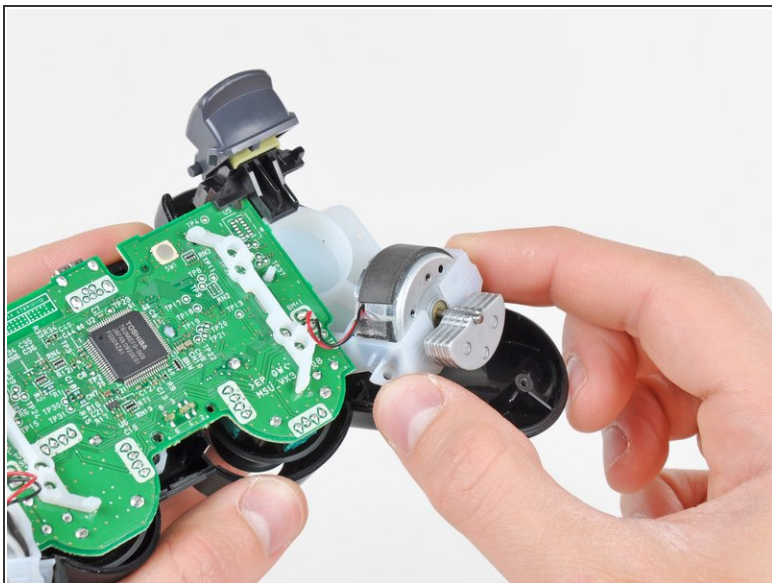
- Remove the single 7.2 mm Phillips screw securing the motherboard to the front cover.

Step 7



- Slide the trigger button retainers slightly away from the front cover.
- Remove the #1 button on both sides.

Step 8



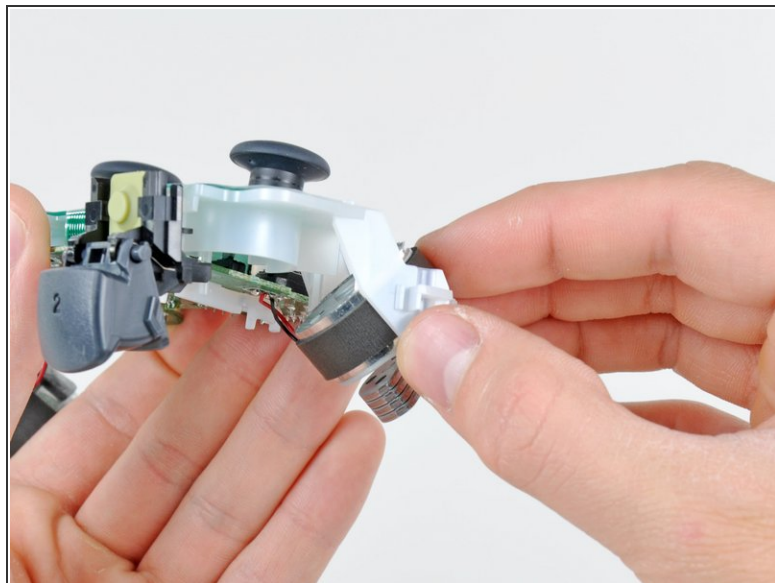
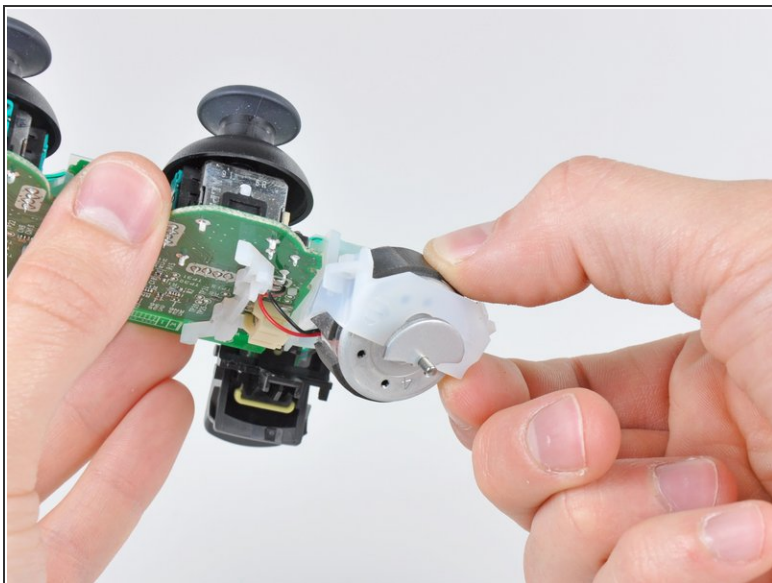
- Pull the vibration motor retainers away from the front cover to dislodge the motherboard assembly.

Step 9



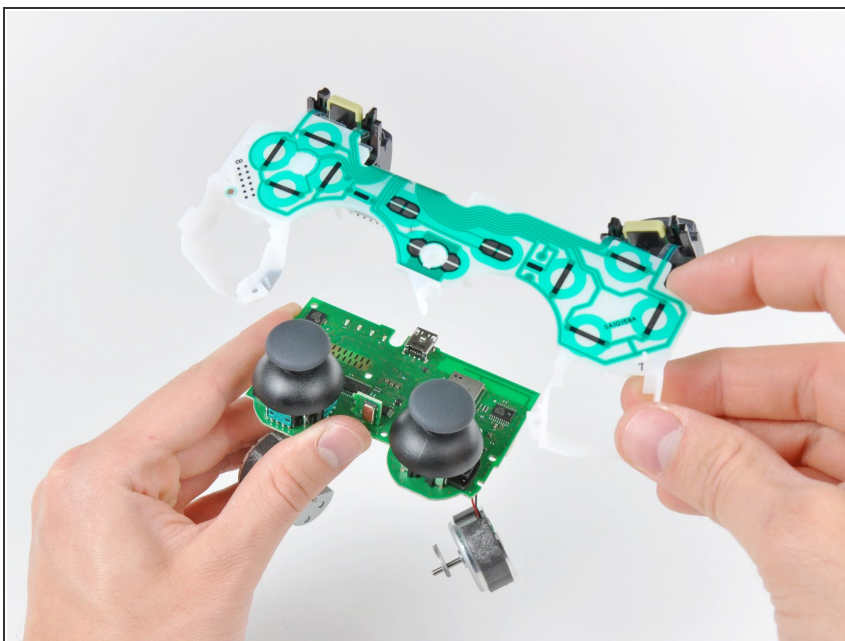
- Remove the motherboard assembly from the front cover.
- ⓘ When removing the motherboard assembly, try not to tilt the front cover upside down as the buttons and their covers may fall out.

Step 10 — Input Board



- Carefully push the two vibration motors out of the input board frame.

Step 11



- Lift the input board assembly off the motherboard.

To reassemble your device, follow these instructions in reverse order.