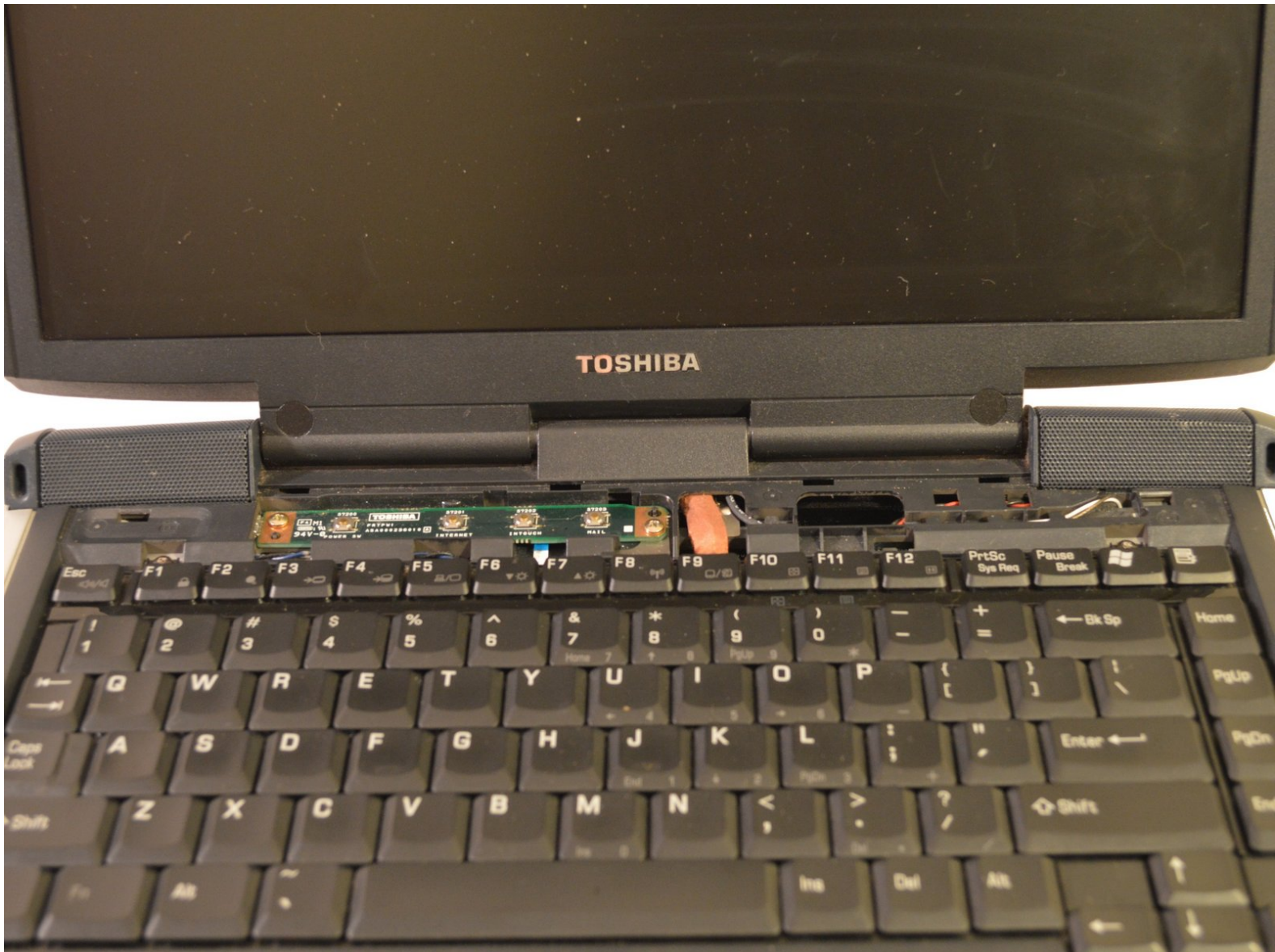




# Toshiba Satellite 1415-S105 Keyboard Replacement

Replacing the Keyboard on a Toshiba Satellite 1451.

Written By: Kiril Lange



---

# INTRODUCTION

Use this guide to replace the keyboard on your Toshiba Satellite.

---

## TOOLS:

- [iFixit Opening Tools](#) (1)
  - [Phillips #0 Screwdriver](#) (1)
-

## Step 1 — Battery



- The battery is located on the front right corner of the laptop.

## Step 2



- With one finger on the raised grip, slide the latch towards the front of the laptop.



## Step 3



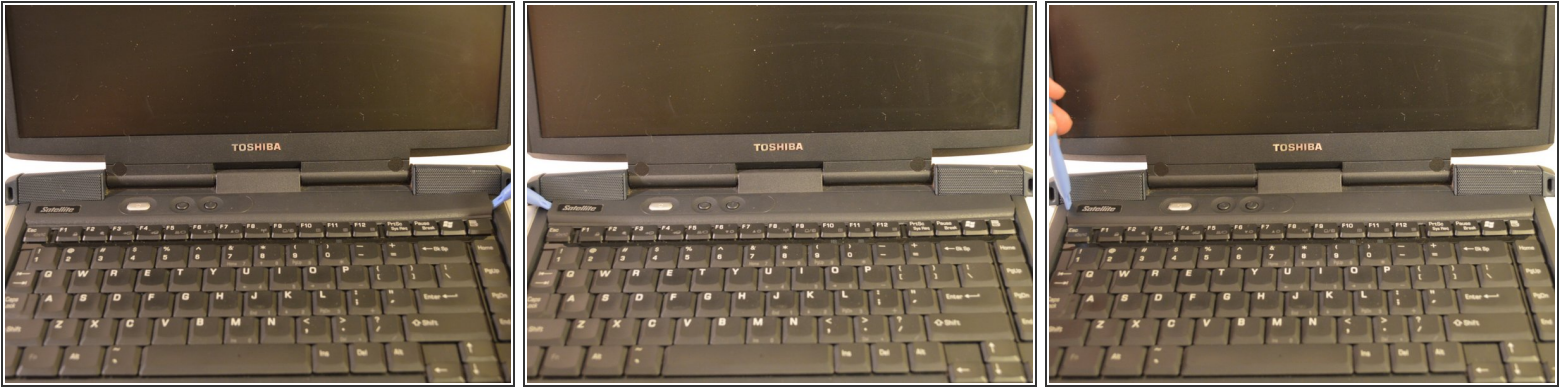
- Pull the battery out towards the side.

## Step 4



- Lift the battery straight up, out of the computer.

## Step 5 — Keyboard



- Using a set of case opening tools, pry open the left and right sides of the black plastic strip above the keyboard.
- Fully detach the strip.

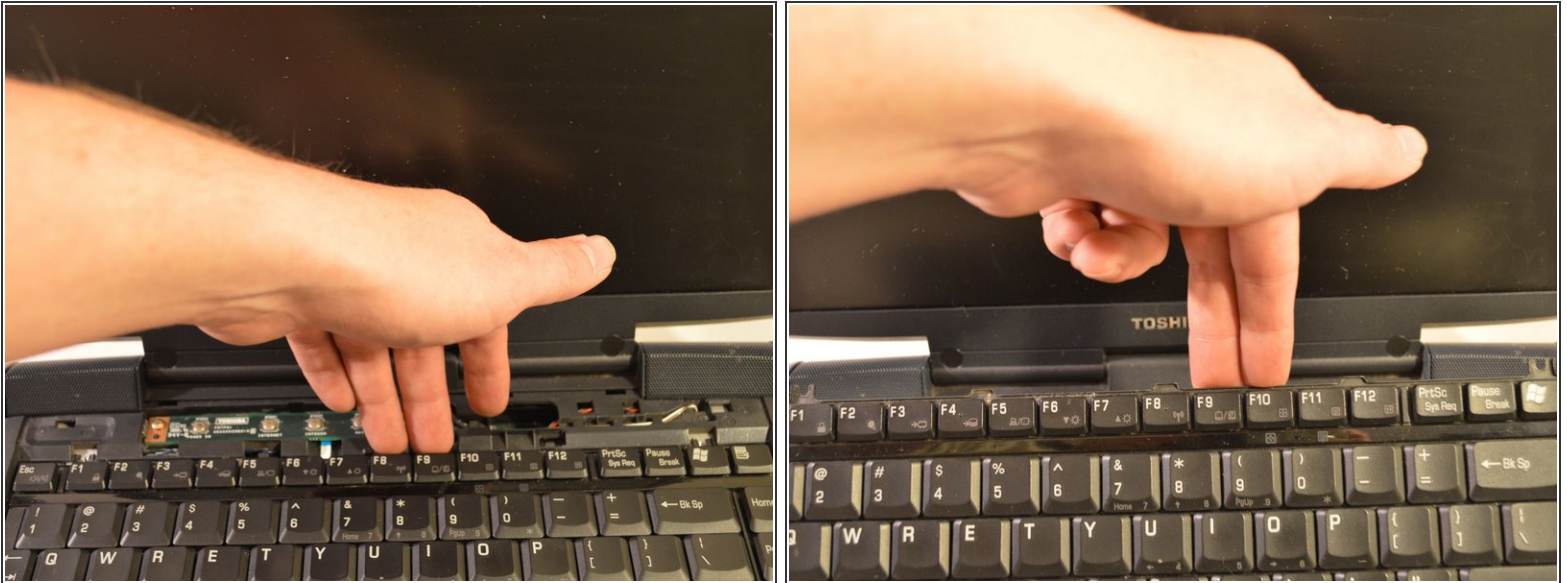
## Step 6



- Unscrew the two screws near the top of the keyboard.



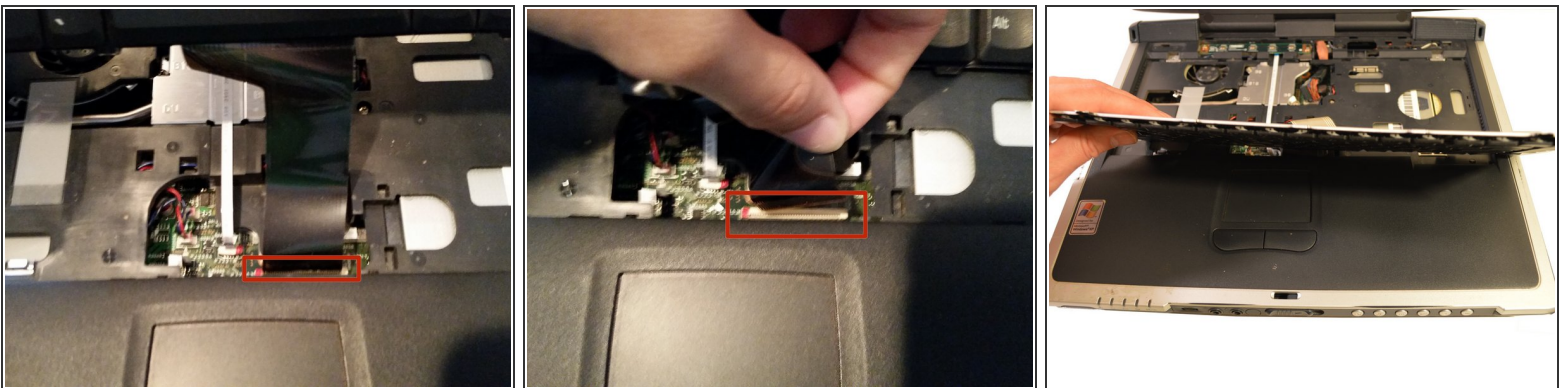
## Step 7



- Lift the keyboard by holding the middle top of the keyboard.

⚠ The keyboard is still connected by a ribbon cable to the motherboard.

## Step 8



- Carefully pull upwards on the ribbon cable to detach.
- Remove keyboard.

To reassemble your device, follow these instructions in reverse order.