



HTC Evo 4G Front Facing Camera Replacement

Front-facing camera replacement.

Written By: Walter Galan



INTRODUCTION

Use this guide to replace the front-facing camera.



TOOLS:

- [Phillips #00 Screwdriver](#) (1)
 - [Spudger](#) (1)
 - [T5 Torx Screwdriver](#) (1)
 - [Tweezers](#) (1)
 - [iFixit Opening Tools](#) (1)
-

Step 1 — Rear Panel



- Gently insert an iPod opening tool between the rear panel and the inner rear frame near the headphone jack.
- Use your iPod opening tool to pry up the rear case around the perimeter of the Evo.

Step 2



- Lift the rear panel off of the inner rear frame.

Step 3 — Battery



- Using the tip of your finger, lift the battery from the end closest to the camera.
- Remove the battery from the rear inner frame.

Step 4 — MicroSD card



- Use the flat end of a spudger to pry up the red MicroSD retainer attached to the inner frame.
- ⚠ The retainer will move about 1 mm and stop. Do not attempt to completely remove the MicroSD card retainer.

Step 5



- Use a pair of tweezers to carefully pull the MicroSD card out of its slot in the inner rear frame.

Step 6 — Rear Inner Frame



- Remove six T5 Torx screws securing the rear inner frame to the inner case.

Step 7



- Gently insert an iPod opening tool between the rear inner frame and its plastic surround near the Micro HDMI port.
- Carefully pry the top edge of the rear inner frame away from the front surround of the Evo.

Step 8



- Insert the iPod opening tool between the rear inner frame and its plastic surround and pry up at several points along the left edge of the Evo.

Step 9



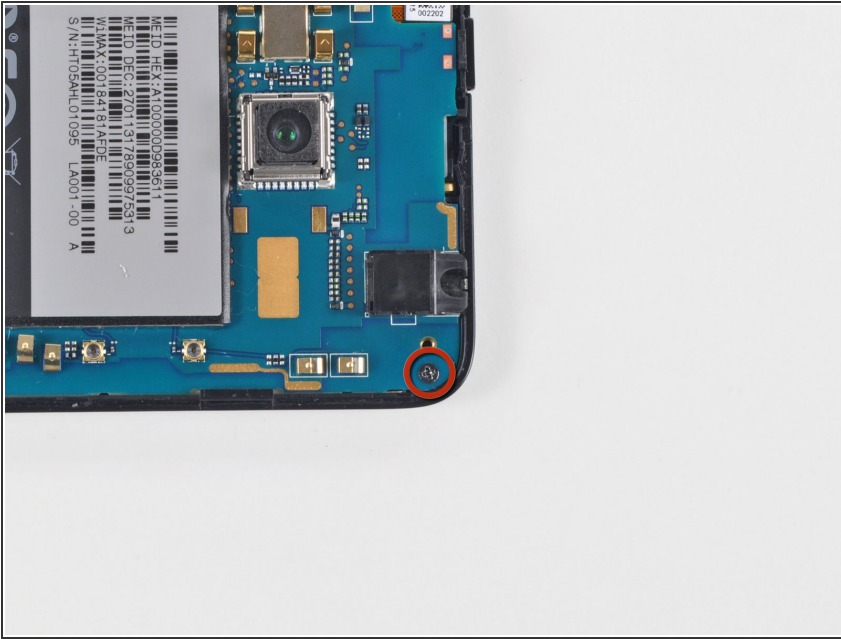
- Continue the prying procedure, now focusing on detaching the plastic surround from the bottom of the Evo.
- Pry up the rear inner frame along the right edge using the method described in previous steps.
- Eventually work around the entire perimeter of the rear inner frame until it is lifted slightly from the inner case.

Step 10



- Remove the rear inner frame from the rest of the Evo.

Step 11 — Motherboard



- Remove the single Phillips screw securing the motherboard to the inner case near the headphone jack.

Step 12



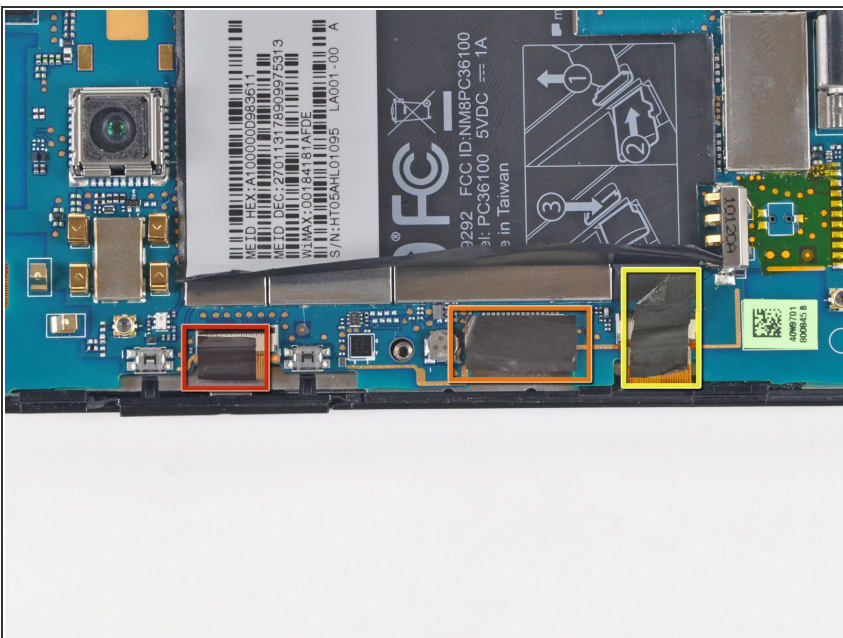
- Use the flat end of a spudger to pry the motherboard off the posts securing it to the metal display tray.
- ⚠ Do not try to completely remove the motherboard just yet. It is still attached by three ribbon cables.

Step 13



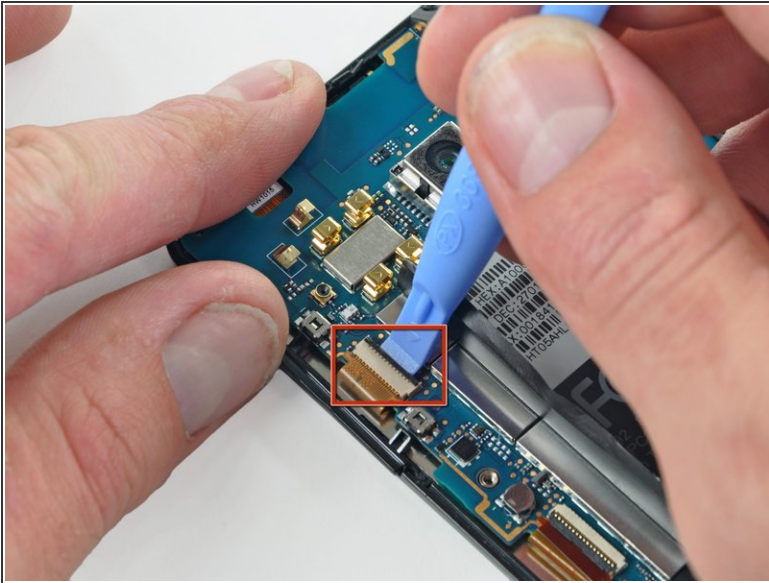
- Carefully peel the device information sticker off the left edge of the motherboard and EMI shield to reveal three connectors covered with tape.
- ⓘ It is not necessary to peel the entire device information sticker off the EMI shield.

Step 14



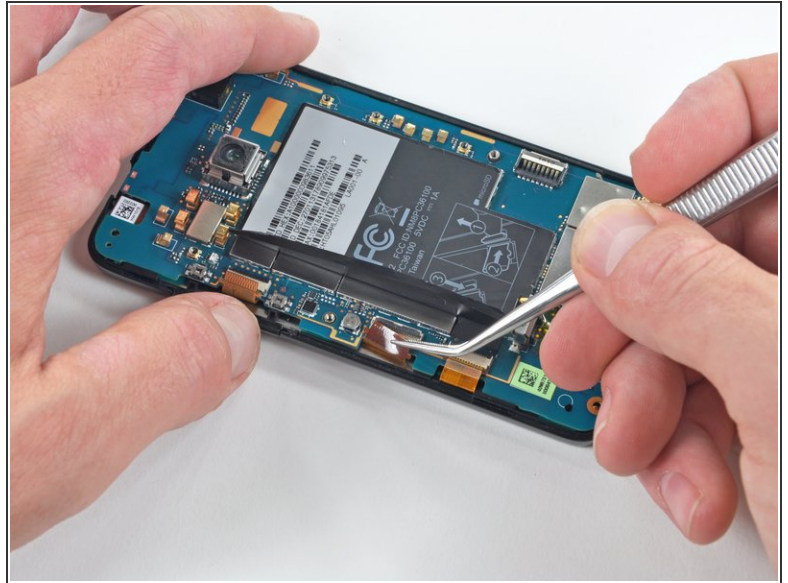
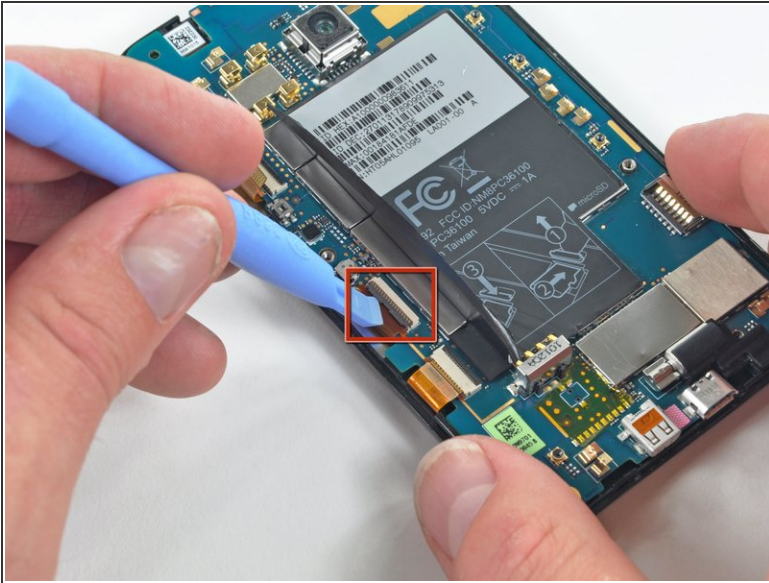
- ⓘ Fold the device information sticker up against the top of the motherboard to keep it out of the way while you work.
- Remove the pieces of tape covering the following ribbon cables:
 - Front-facing camera
 - Front panel ribbon cable
 - Display ribbon cable

Step 15



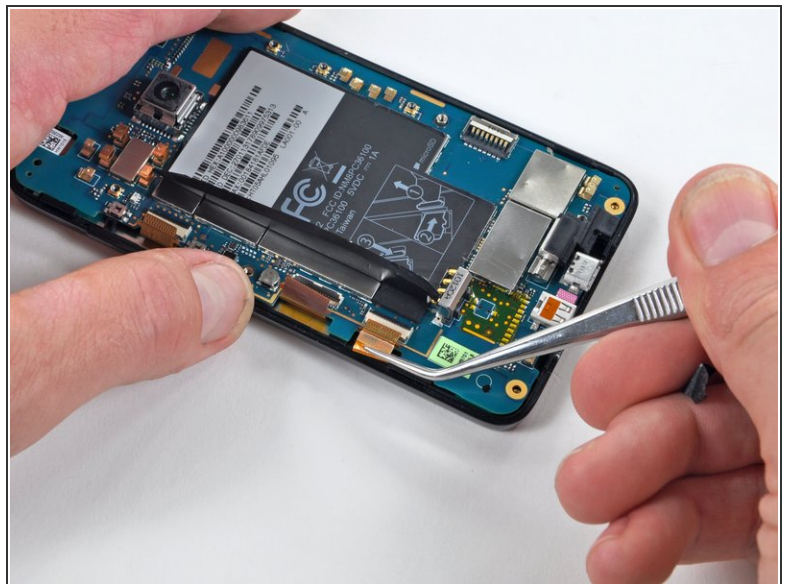
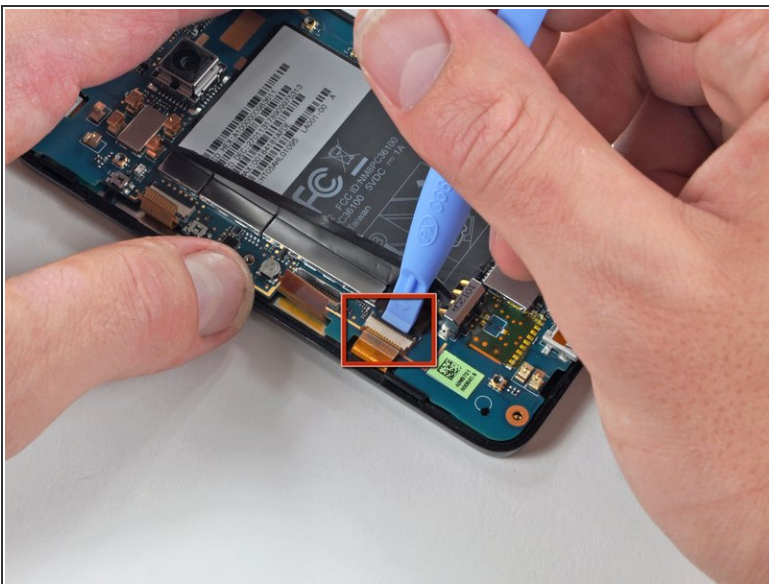
- Using the tip of an iPod opening tool, flip up the front-facing camera ribbon cable retaining flap.
- Be very careful and gentle with these flaps. They are very easy to break or dislodge and equally difficult to reinstall.
- Use a pair of tweezers to pull the front-facing camera ribbon cable straight out of its socket.

Step 16



- Using the tip of an iPod opening tool, flip up the front panel ribbon cable retaining flap.
- Use a pair of tweezers to pull the front panel ribbon cable straight out of its socket.

Step 17



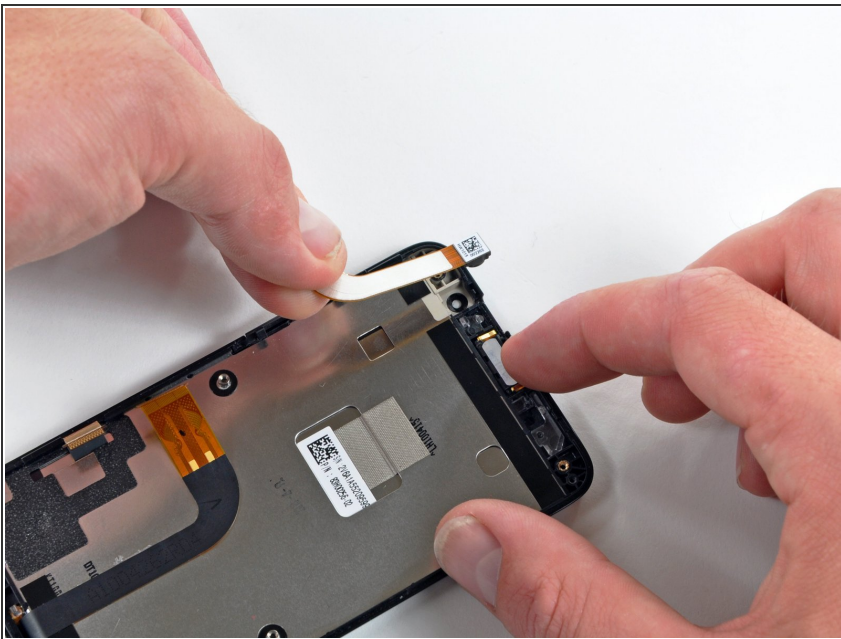
- Using the tip of an iPod opening tool, flip up the display ribbon cable retaining flap.
- Grasp the display ribbon cable with a pair of tweezers and pull it straight out of its socket.

Step 18



- Carefully lift the motherboard out of the inner case, minding any cables that may get caught.
- ⓘ Be mindful of the top power button and side rocker switch, which may fall out of the front case when the board is removed.

Step 19 — Front Facing Camera



- Gently lift the front-facing camera out of its recess in the inner case and remove it from the Evo.

To reassemble your device, follow these instructions in reverse order.