



Samsung Galaxy S4 Mini SIM Card Replacement

Use this guide to replace the SIM card in your...

Written By: Armando Campos



INTRODUCTION

Use this guide to replace the SIM card in your Samsung Galaxy S4 Mini.

TOOLS:

[Spudger](#) (1)

PARTS:

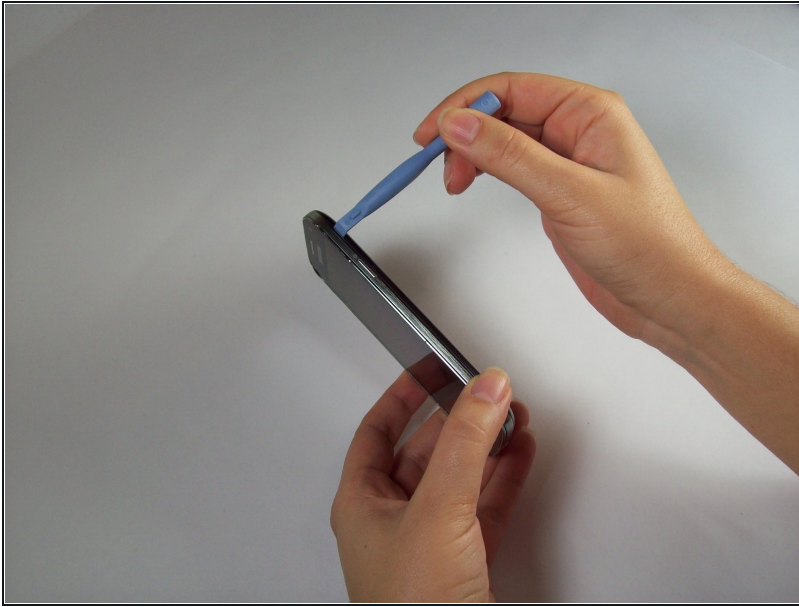
[SIM Card](#) (1)

Step 1 — Battery



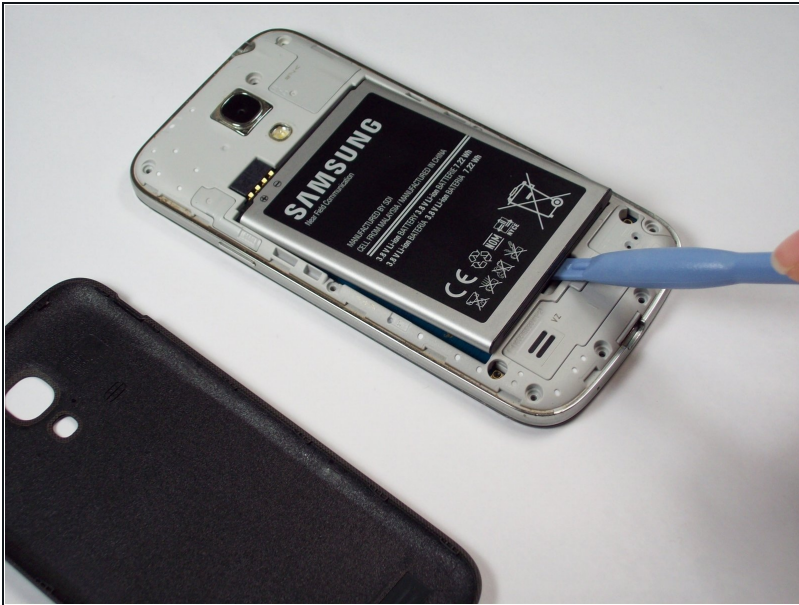
- Press and hold the END key to power the phone down.

Step 2



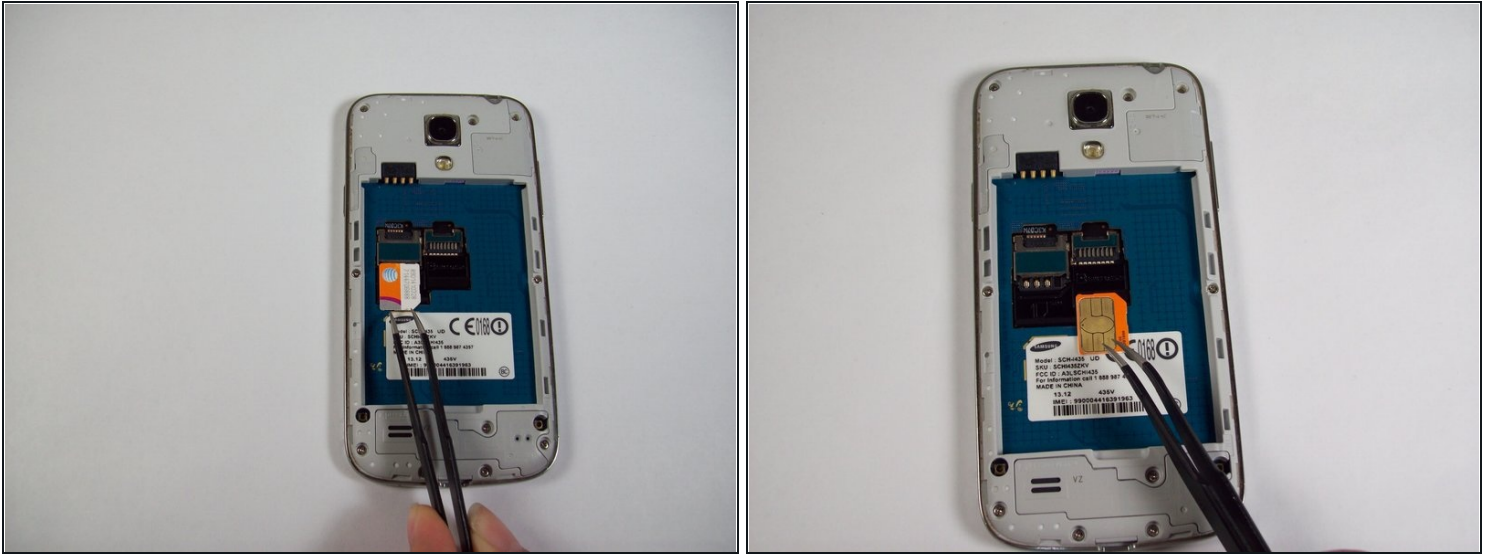
- Remove the back cover of the cell phone using a plastic opening tool.

Step 3



- Pry the battery out using a plastic opening tool.

Step 4 — SIM Card



- Using [tweezers](#), remove the SIM card by sliding it towards the bottom of the device.

To reassemble your device, follow these instructions in reverse order.