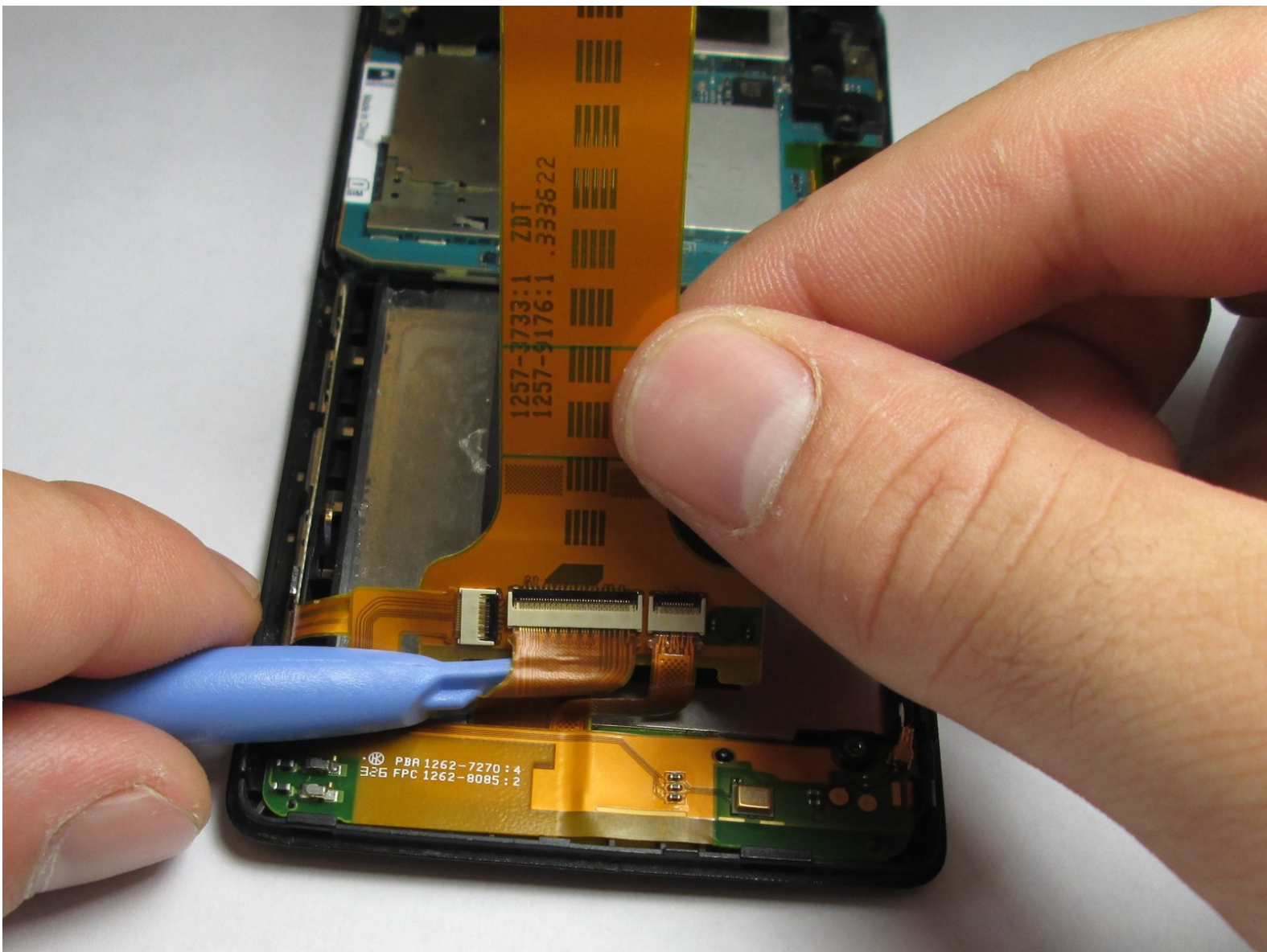




# Sony Xperia TL Battery Harness Replacement

This component lies on top of the battery and controls screen appearance, loud speaker, and side buttons.

Written By: Adam Giniger



---

## INTRODUCTION

It is one of the easier components to reach and replace. I will teach you how to remove it if it needs to be replaced.

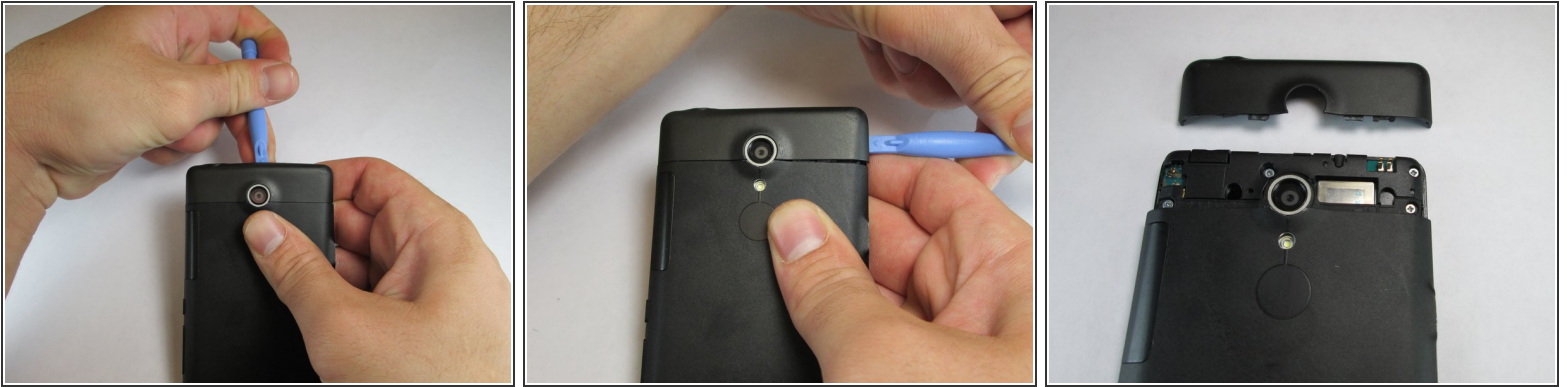
---



### TOOLS:

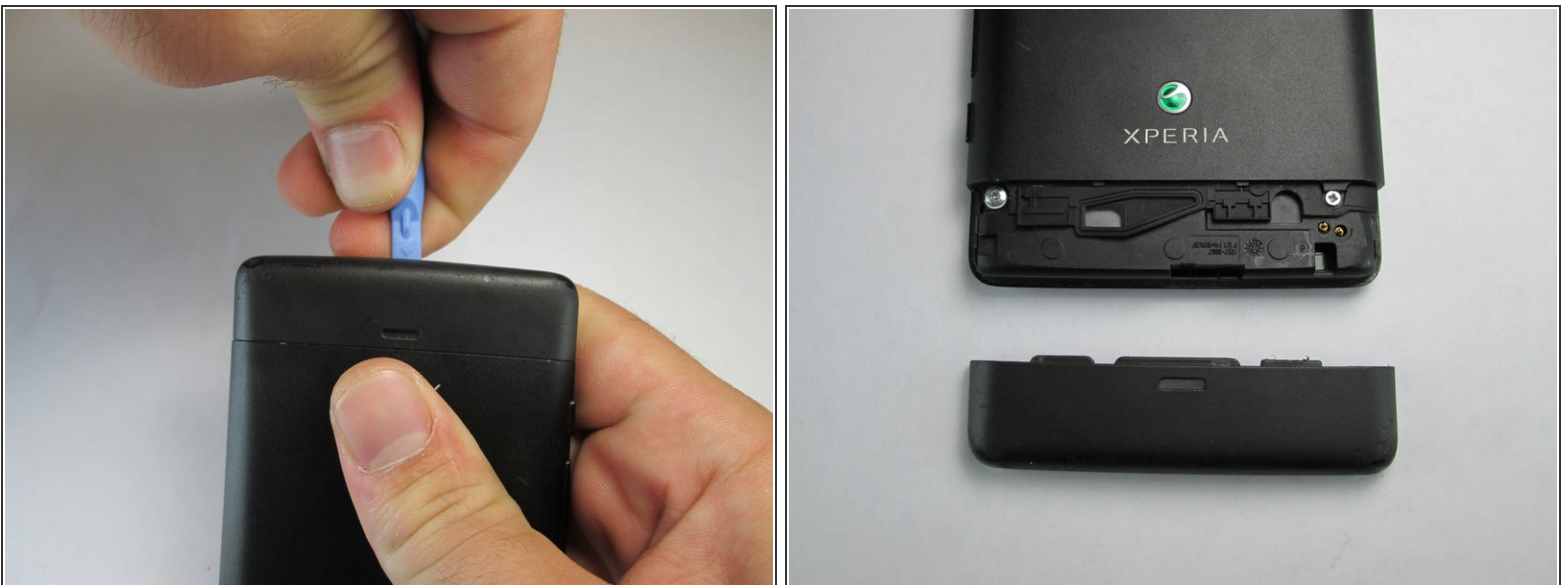
- [Phillips #00 Screwdriver](#) (1)
  - [iFixit Opening Tools](#) (1)
-

## Step 1 — Remove Top Plastic Section



- Use the plastic opening tool to pry the top plastic section off.

## Step 2 — Remove Bottom Plastic Section



- Use the plastic opening tool to pry the bottom plastic section off.

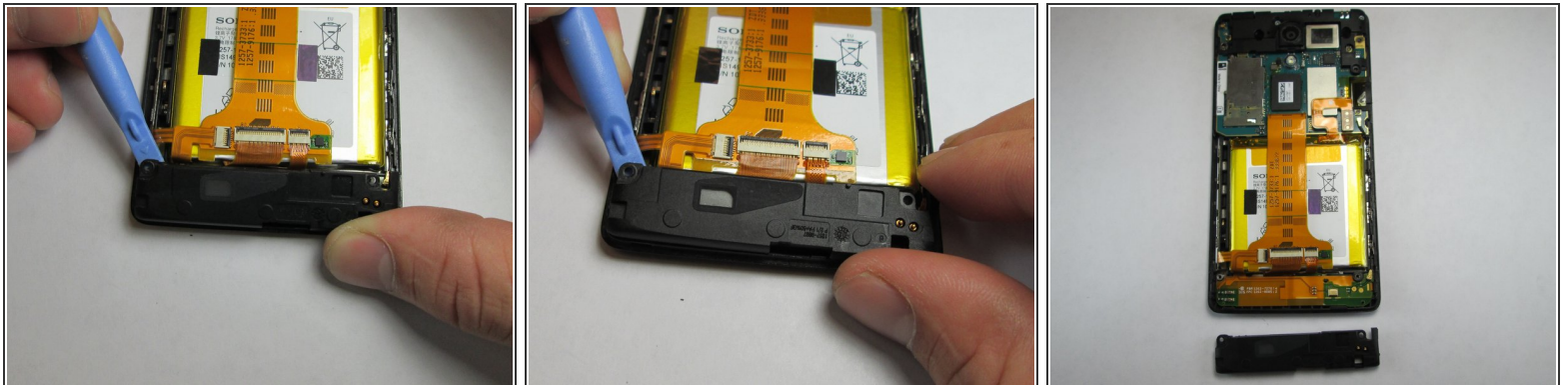


### Step 3 — Unscrewing the Back Off



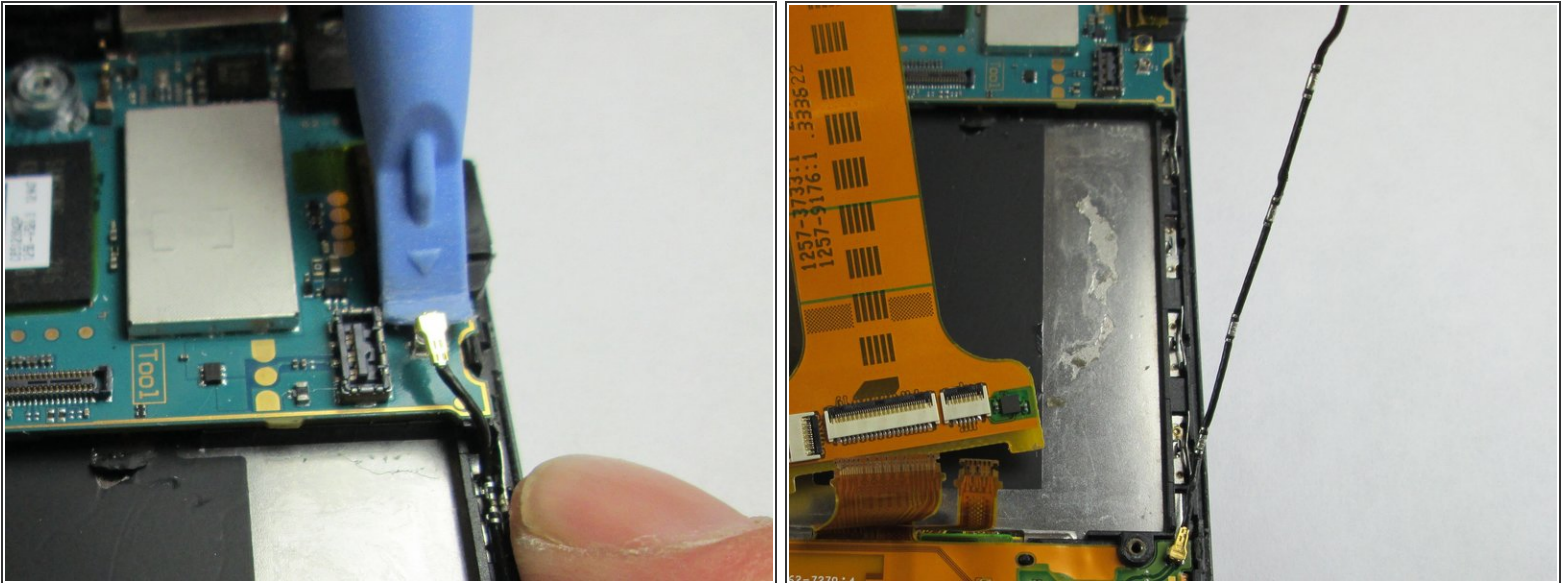
- Remove the four 5mm screws.
- Use the plastic opening tool to pry off the back.

### Step 4 — Loud Speaker



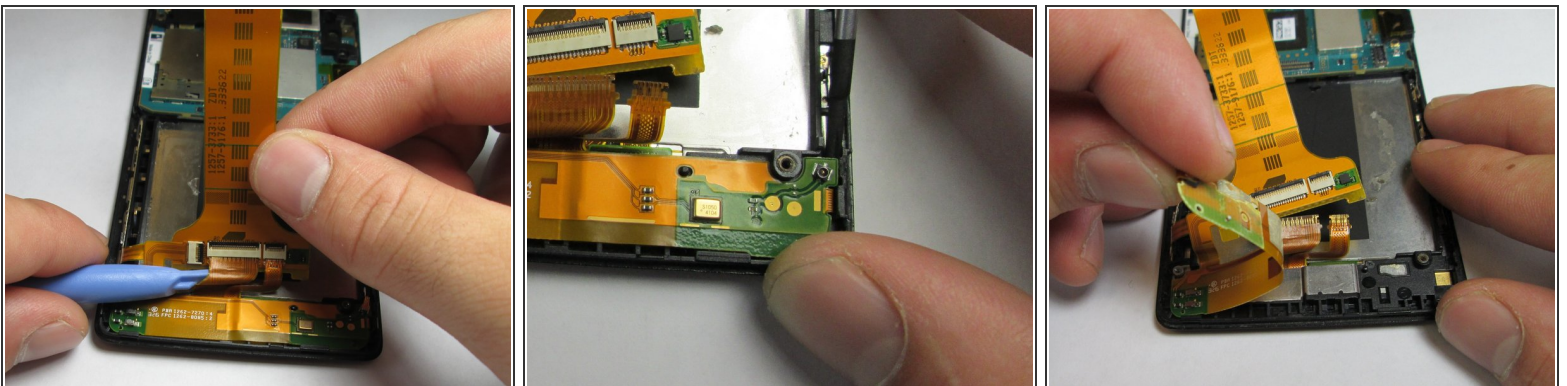
- Use the plastic opening tool to remove the loud speaker module.

## Step 5 — Sony Xperia TL Auxiliary Cord Replacement



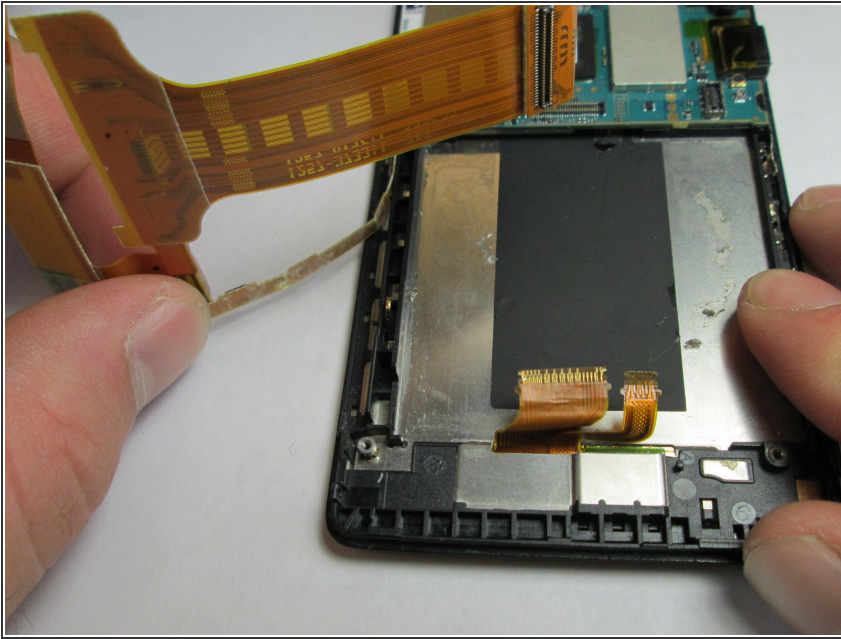
- Use the plastic opening tool to unlatch the cord's ends off the motherboard and loud speaker module. The cord can be located on the right side of the phone.

## Step 6 — Battery Harness



- Unhook the 2 connections between the harness and phone shell.
- Using the plastic opening tool, pry the harness up and remove it.
- ⓘ There is an adhesive on the bottom half of the battery harness.

## Step 7



- The final step is taking the entire harness off of the phone.

To reassemble your device, follow these instructions in reverse order.