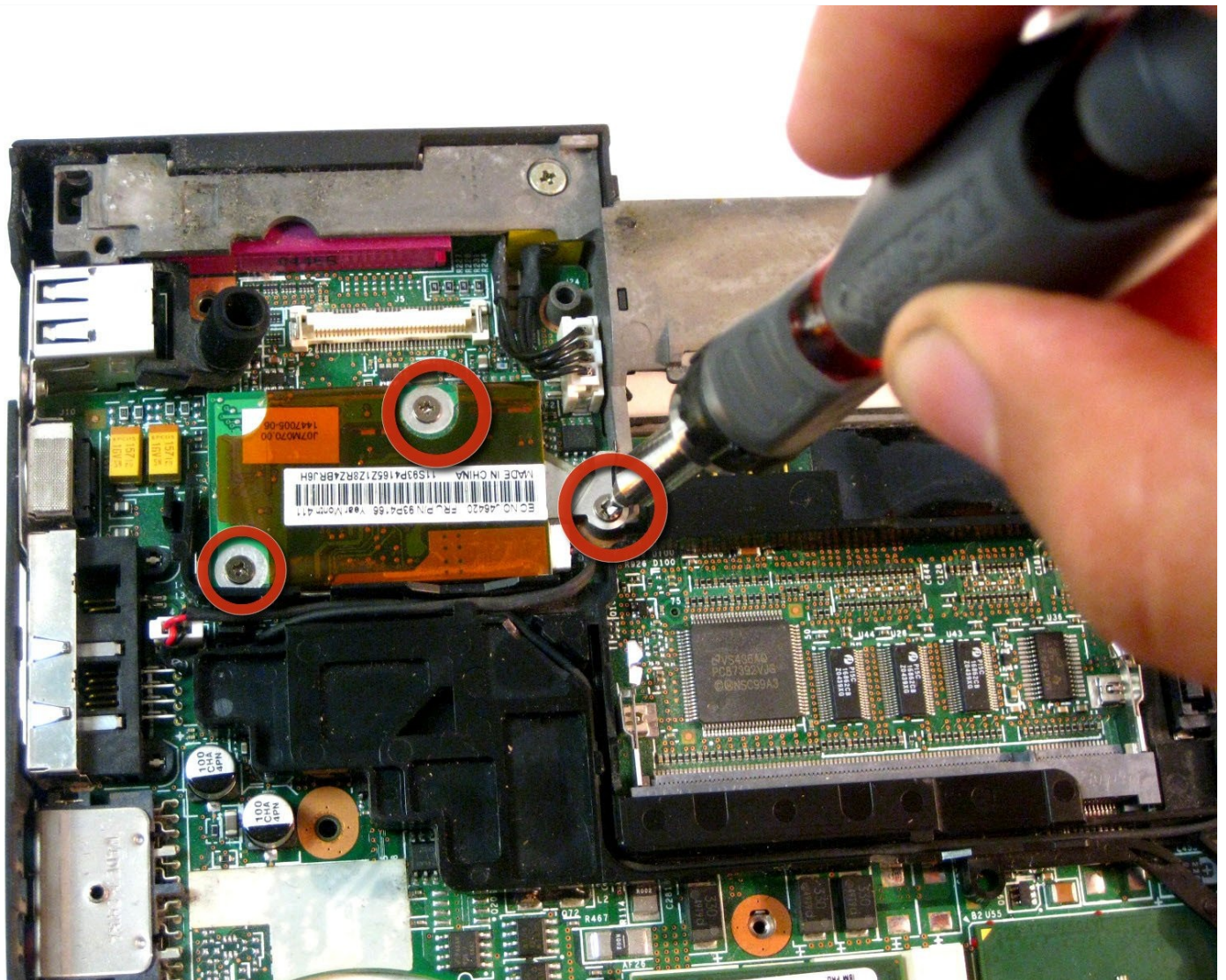




Replacement

This guide will demonstrate the removal and...

Written By: Gerald Watanabe



INTRODUCTION

This guide will demonstrate the removal and replacement procedures for an IBM ThinkPad T42 Modem Daughter Board.

TOOLS:

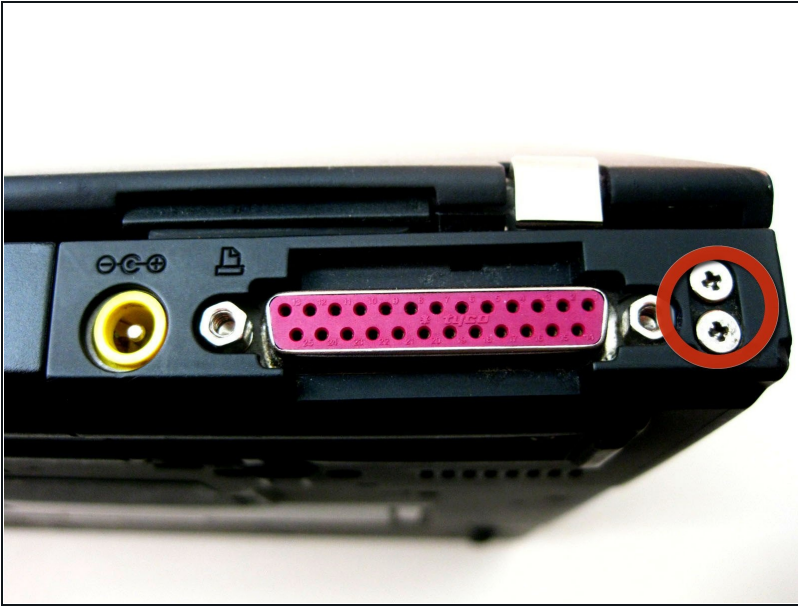
Phillips #0 Screwdriver (1)

Step 1 — Bottom cover



- Using a Phillips #0 screwdriver, identify and unscrew the twenty screws located on the underside of the T42.

Step 2 — Rear screws



- Unscrew the four Phillips screws located on either side of the rear of the T42 (there are two located on each end.)

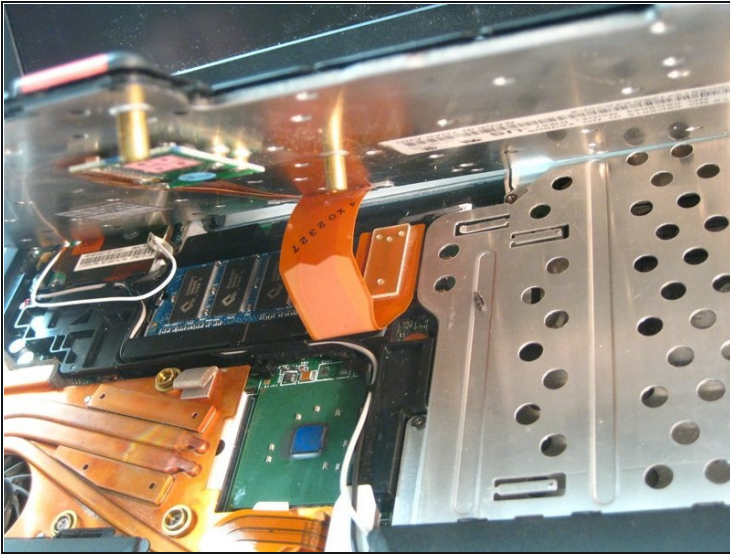
Step 3 — Keyboard and Trackpad



- Flip the laptop over and open the screen to access the keyboard and trackpad.
- ① The keyboard and trackpad are connected to the motherboard. Before removing the keyboard and trackpad, disconnect both components from the motherboard, as shown in the following step.

⚠ The bezel and keyboard will be loose, be careful.

Step 4



- Carefully maneuver the palm rest away from the keyboard, as both the keyboard and palm rest/trackpad will come off together.

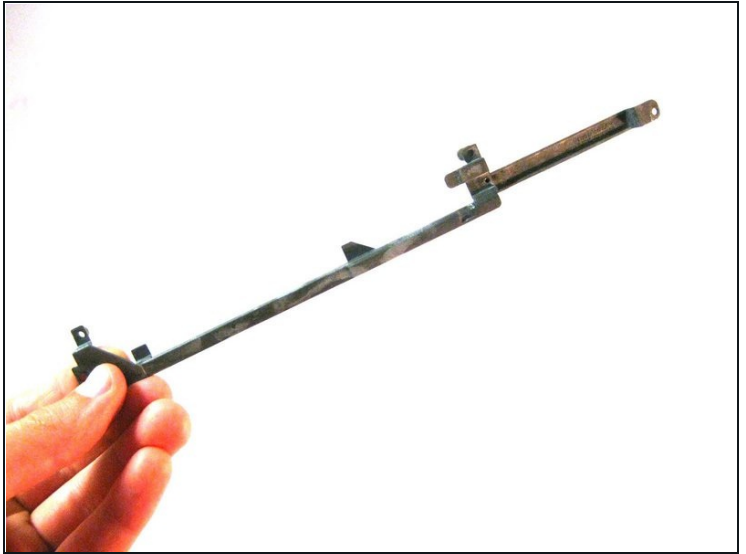
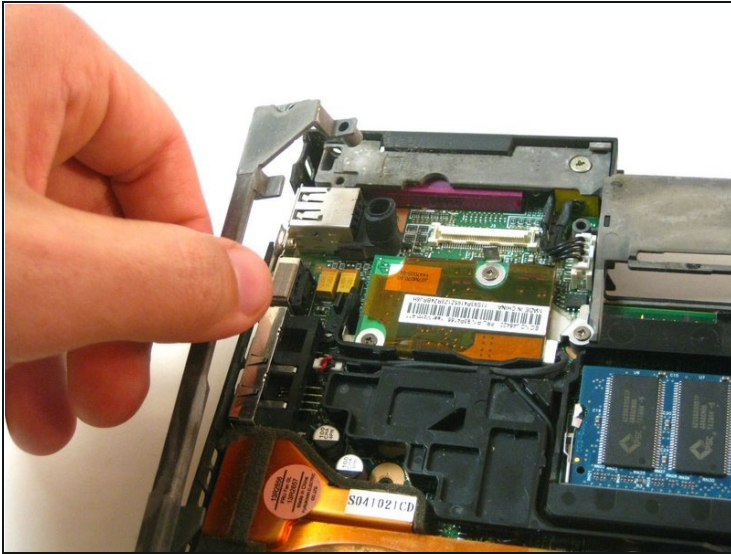
⚠ Remember, both the keyboard and trackpad have connectors to the motherboard. Disconnect these before completely removing either component.

Step 5 — Plastic Edge Cover



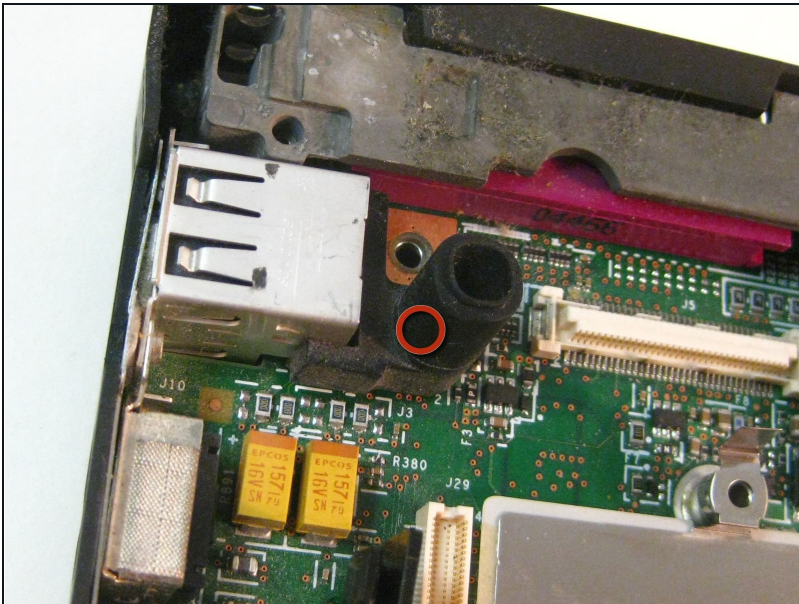
- Starting from the bottom right, carefully pry off the bezel. Use a spudger or flathead screwdriver if assistance is needed.

Step 6 — Lower Bracket



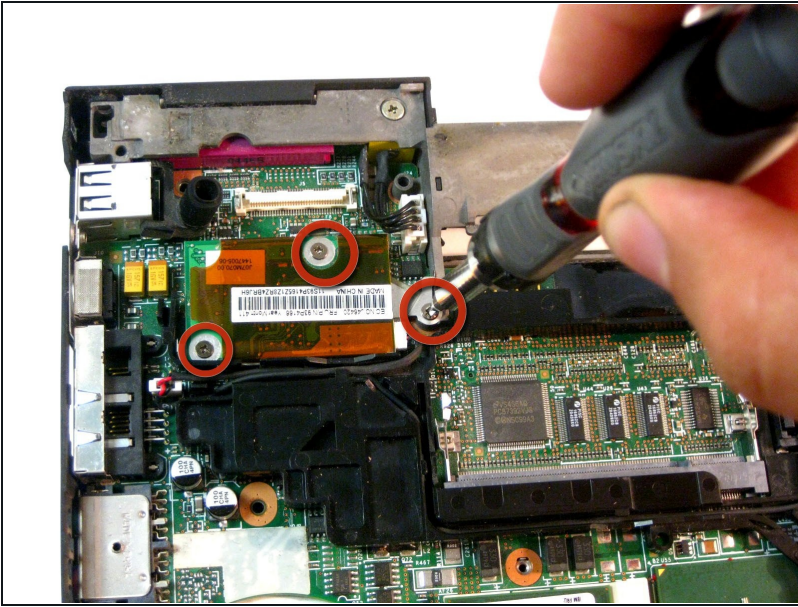
- Grasp the metal bracket to remove it from the device.

Step 7 — Microphone cover



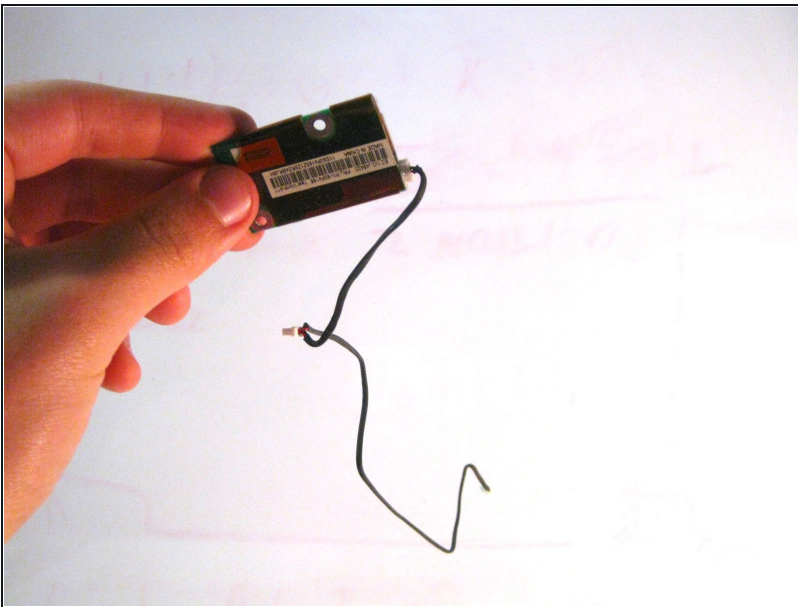
- Remove the rubber cover from the microphone.

Step 8 — Daughterboard Unscrewing



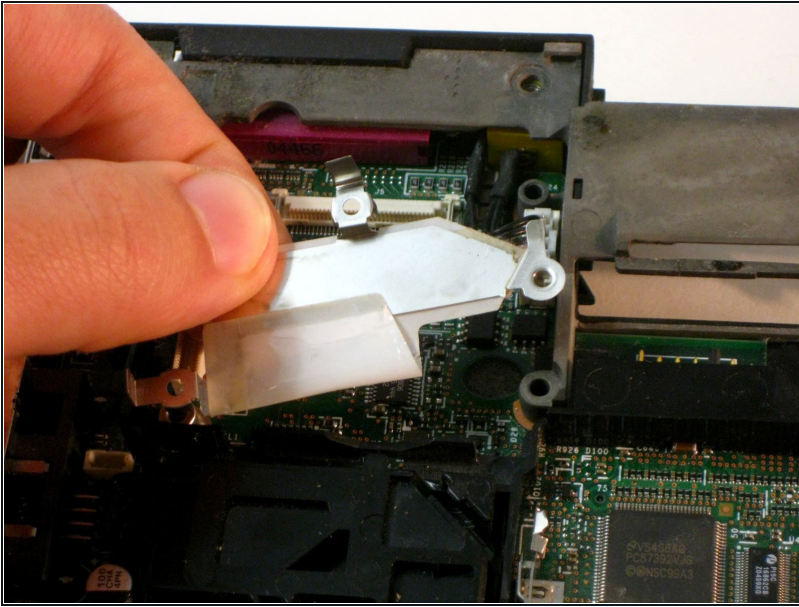
- Next, unscrew the 3 Phillips screws in red.

Step 9 — Removing the Daughterboard



- The cables are routed through different components for organization, carefully disconnect them, unwrap them and pull the card free.

Step 10 — Remove Bracket



- Lastly, remove the bracket sitting beneath it.
- ① The end!

To reassemble your device, follow these instructions in reverse order.