



# Samsung Galaxy S5 Mini Battery Replacement

This guide describes the removal and replacement of the battery in a Samsung Galaxy S5 Mini.

Written By: Ethan Juhnke



## INTRODUCTION

Use this guide to remove and replace the battery in a Samsung Galaxy S5 mini.

If your battery is swollen, [take appropriate precautions](#).



### TOOLS:

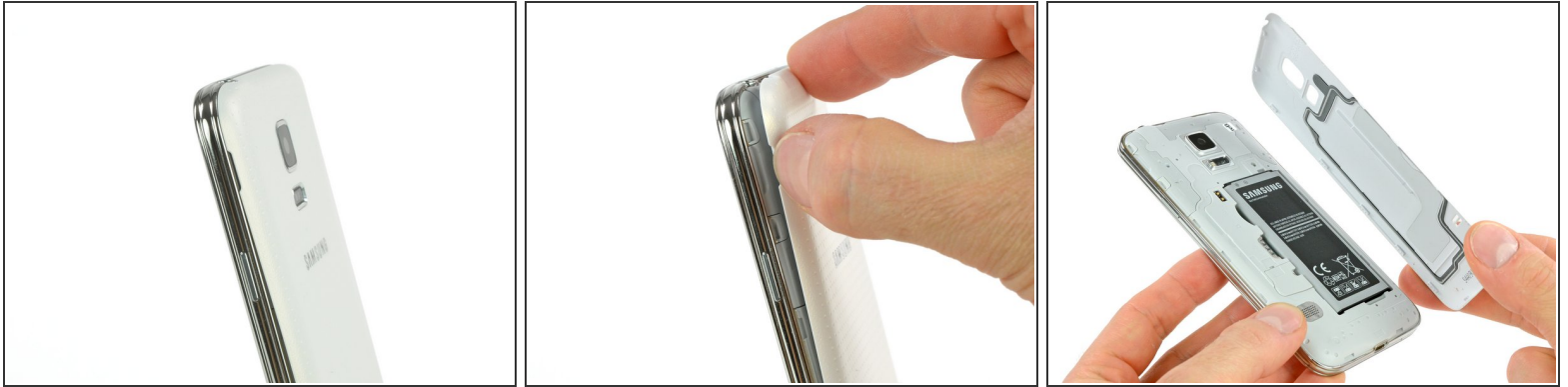
- [iFixit Opening Tools](#) (1)




### PARTS:

- [Galaxy S5 Mini Replacement Battery](#) (1)


## Step 1 — Rear Panel



- Insert a fingernail or a plastic opening tool into the slot located above the power button.
  - Gently pull the panel off the back of the phone.
-  The plastic snaps will make a popping sound as they separate.

## Step 2 — Battery



- Insert fingernail or plastic opening tool into the slot at the bottom of the battery.
  - Gently pry the battery away from the phone.
-  When replacing the battery, ensure the contacts are aligned and press lightly. The battery will appear to fit in multiple directions, so do not force it in.

To reassemble your device, follow these instructions in reverse order.