



Disassembling Sony Ericsson T68i

This guide will help you to disassemble your Sony Ericsson T68i.

Written By: Tim Dascomb



INTRODUCTION

This guide will help you to disassemble your Sony Ericsson T68i.



TOOLS:

- [T6 Torx Screwdriver](#) (1)
 - [iFixit Opening Picks set of 6](#) (1)
-

Step 1 — Disassembling Sony Ericsson T68i



- Remove the battery from the back.

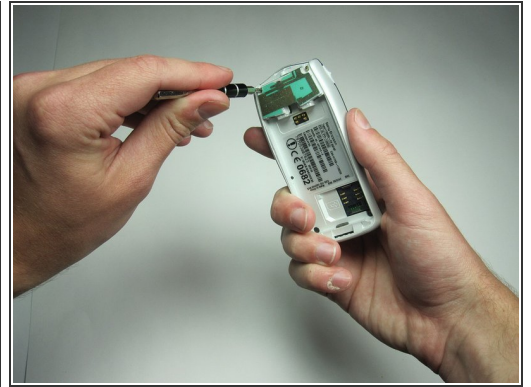
Step 2




- Remove the plastic cover from the back. Pry it off from the top first with a thin plastic shim, then remove it from the two bottom clips.

⚠ When removing the top part do not bend it too far down, or else you risk breaking the two bottom clips.

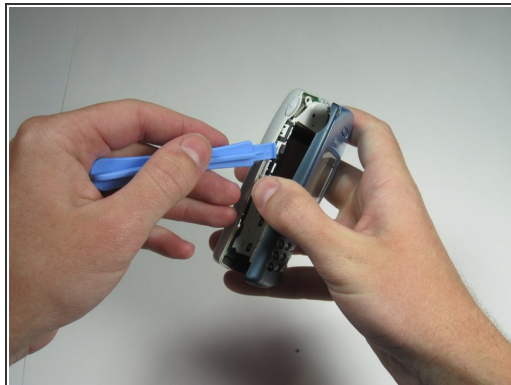
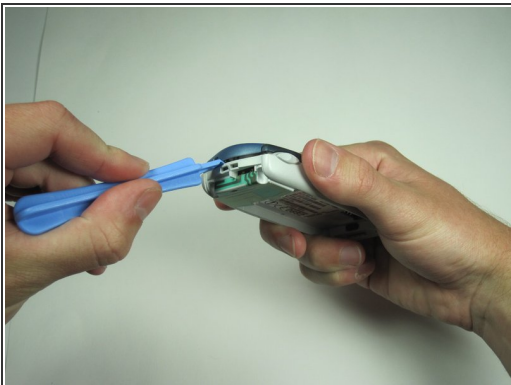
Step 3



- Unscrew all four Torx T6 screws.

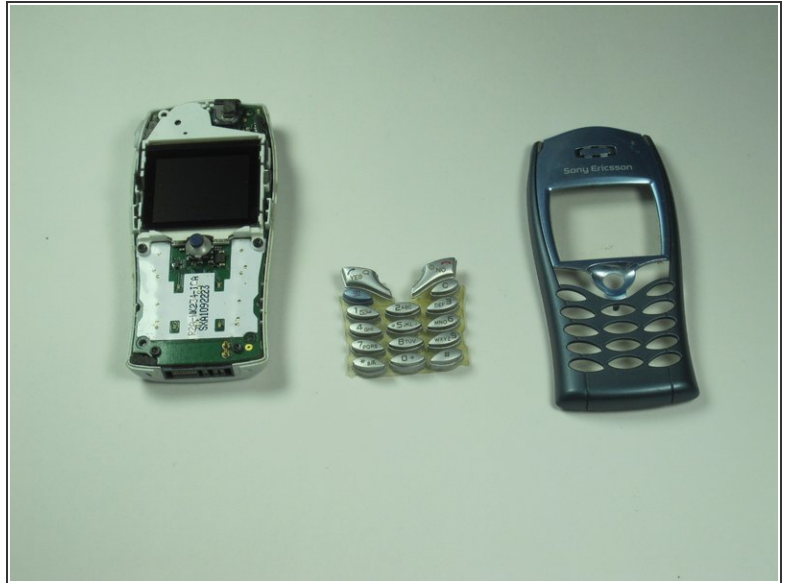
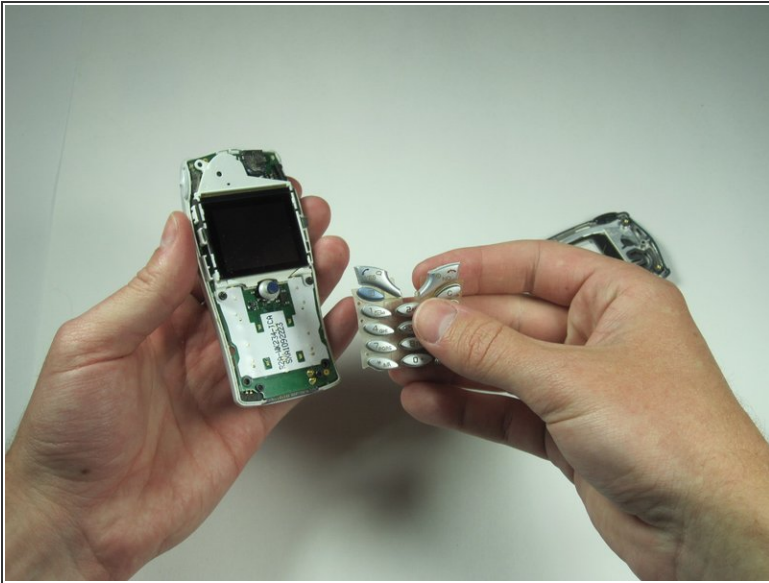
 Keep in a safe place.

Step 4



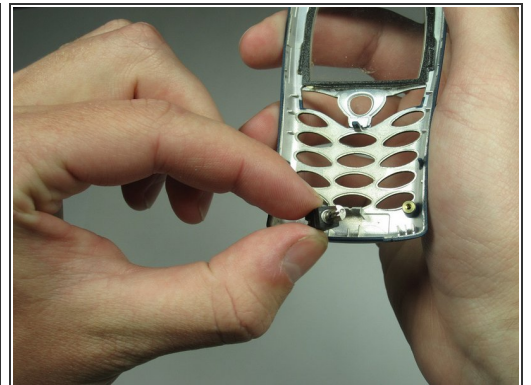
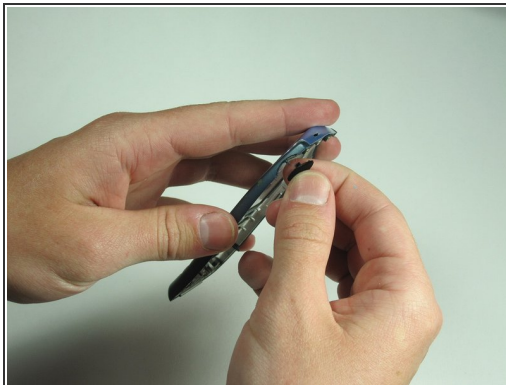
- After removing the screws, the two halves will separate. If not, then pry them gently apart.

Step 5



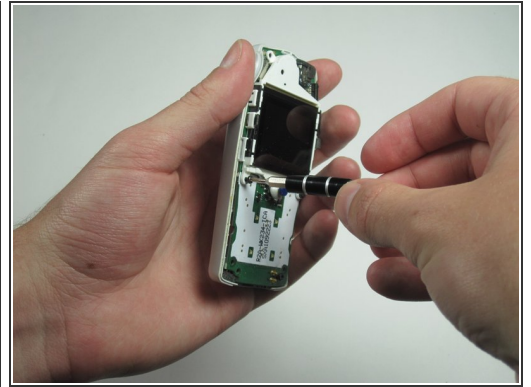
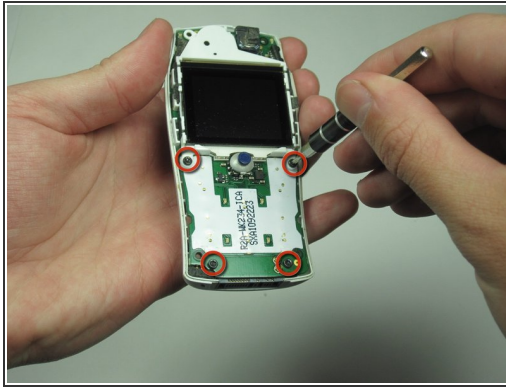
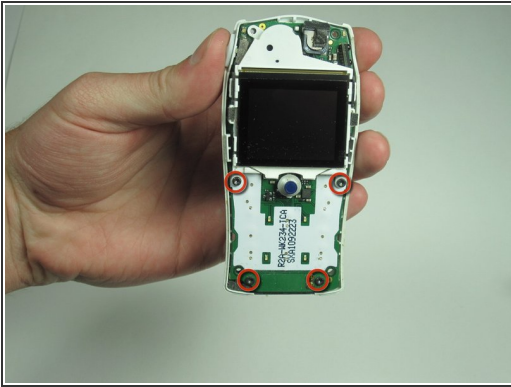
- Pull off the keypad.

Step 6



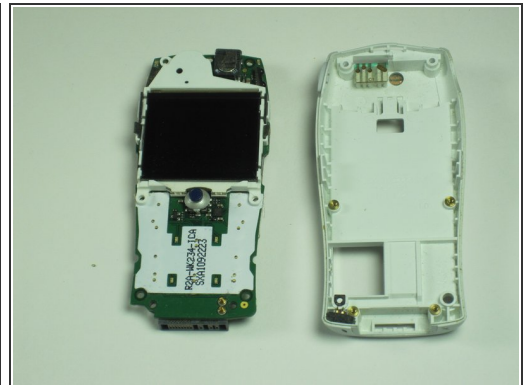
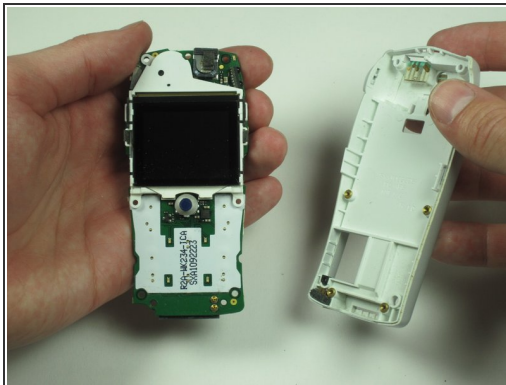
- Gently pull off the infra red window and the vibra motor.

Step 7



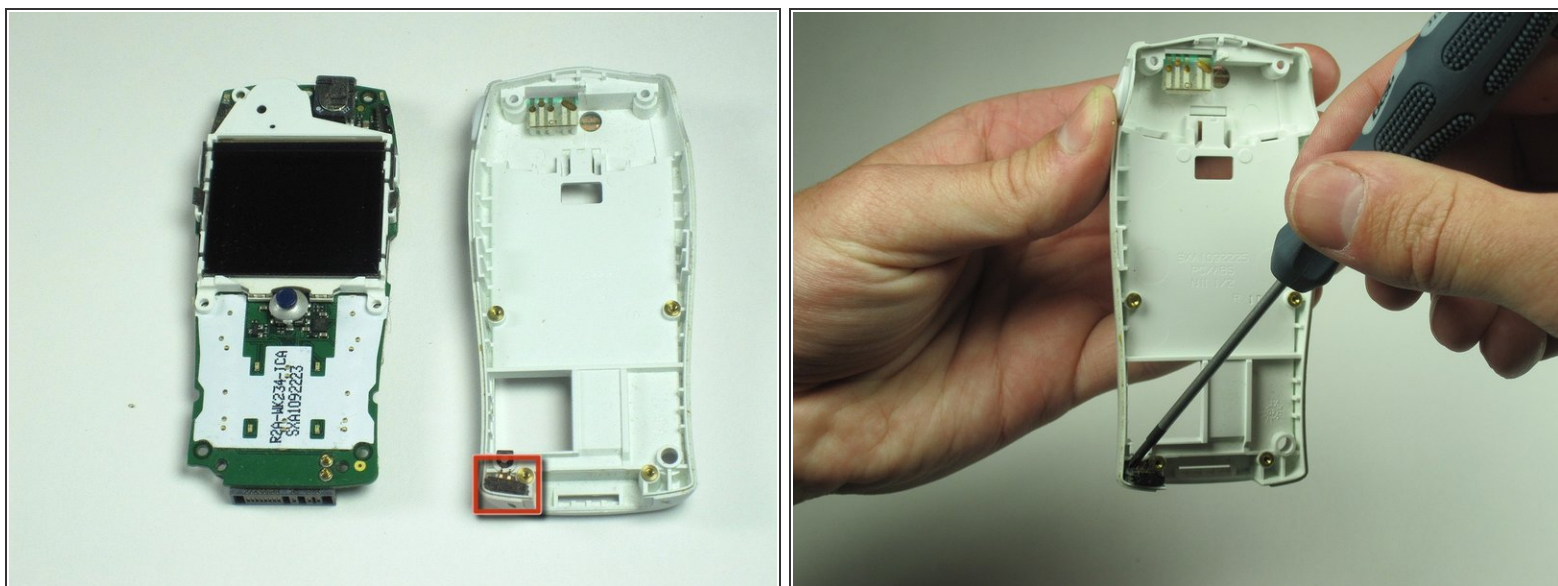
- Remove the circuit board and screen from the device.
- Use your T6 to remove the 4 screws holding the cover on.

Step 8



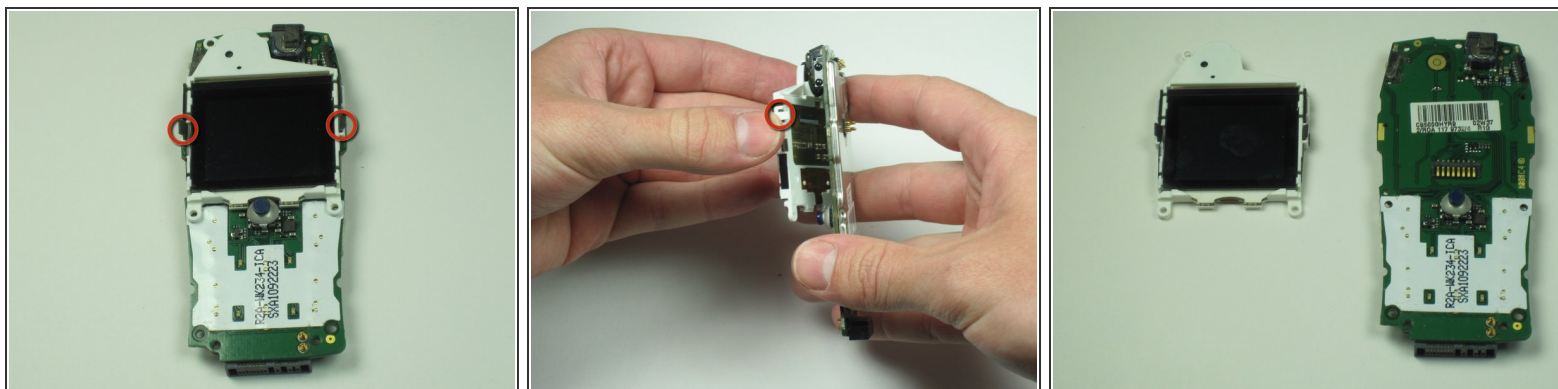
- Remove the board and screen.

Step 9



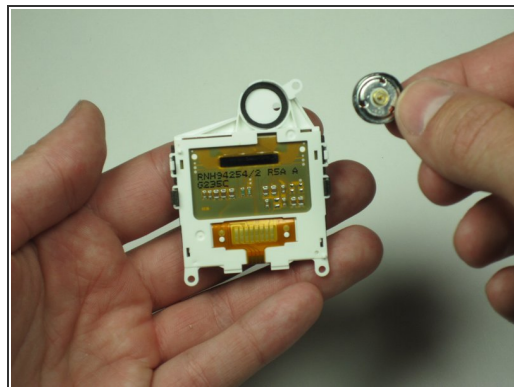
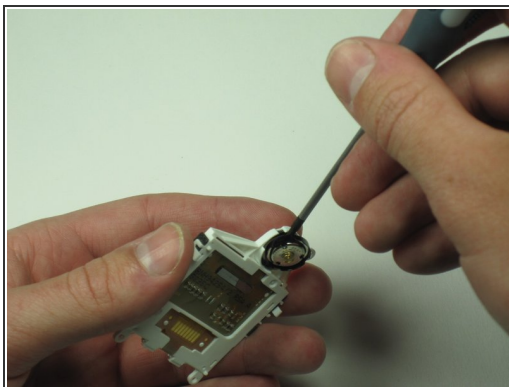
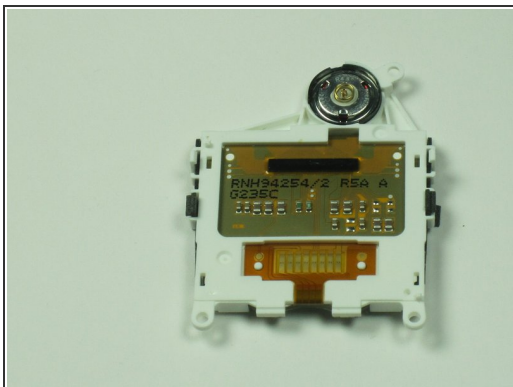
- Lever out the microphone using a small screwdriver or any similar tool.

Step 10



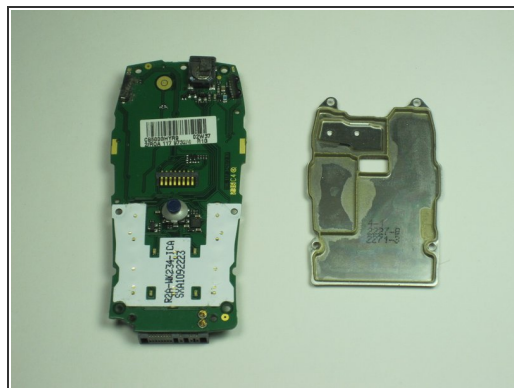
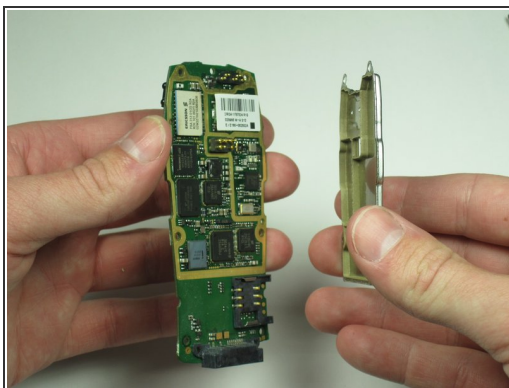
- Carefully remove the plastic clips holding the screen on the board.

Step 11



- Remove the speaker located in the screen housing just above the screen.
- Gently pry it out with a small screwdriver or similar tool.

Step 12



- Remove the plate from the circuit board protecting the more delicate processing parts.

Step 13



- Congratulations, you have successfully disassembled your Sony Ericsson T68i!

To reassemble your device, follow these instructions in reverse order.