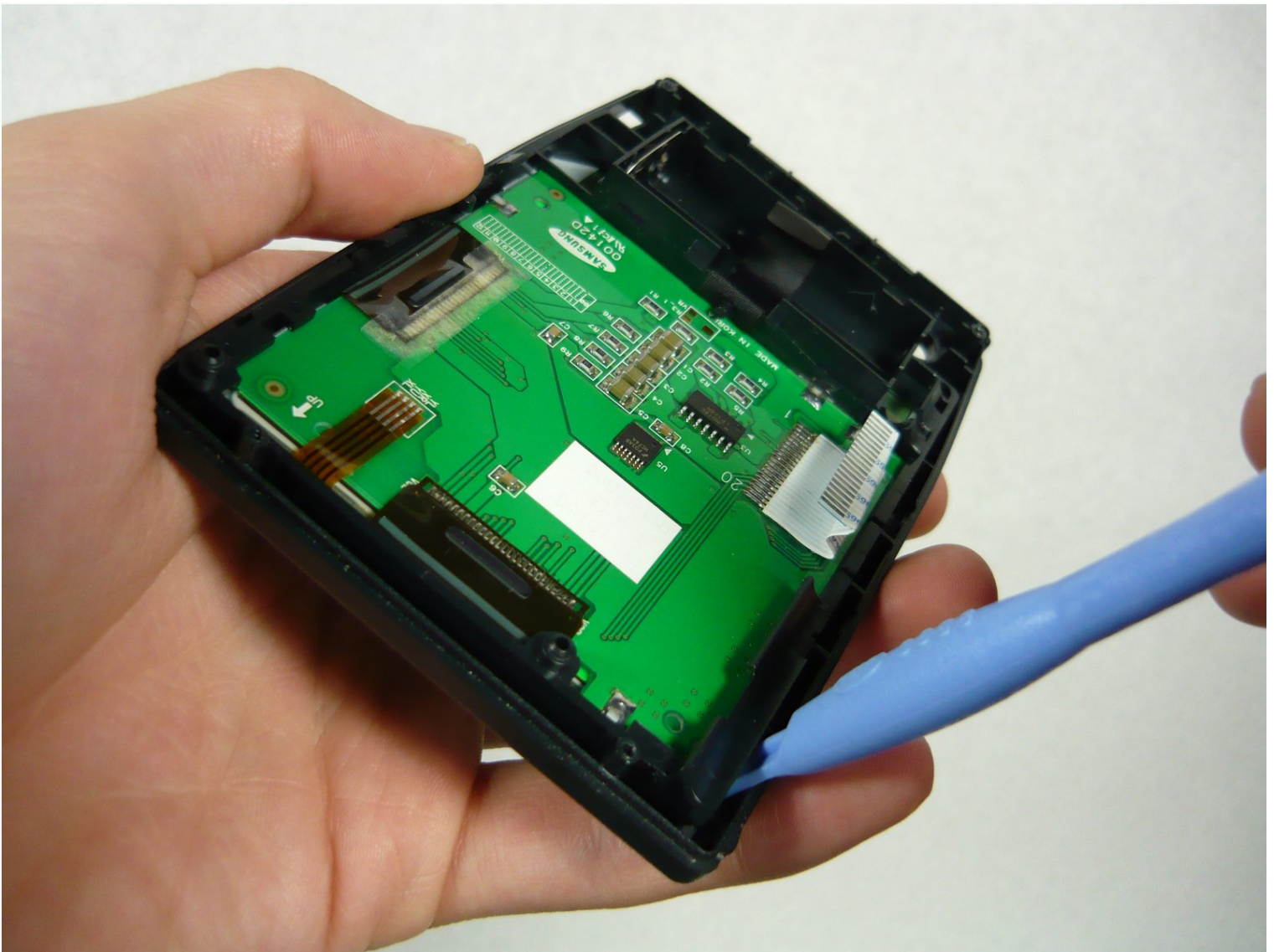




Palm IIxe Screen Replacement

The screen is one of the most important parts...

Written By: Jacob



INTRODUCTION

The screen is one of the most important parts of the device, and breaking it may mean the end of its use. Due to the device's age, finding a new screen may be difficult, but if found, replacing it for the old one is straightforward.

TOOLS:

[Mako Driver Kit - 64 Precision Bits](#) (1)

[Phillips #00 Screwdriver](#) (1)

[Tweezers](#) (1)

[iFixit Opening Tool](#) (1)

[Static Free Cloth](#) (1)

Step 1 — Battery



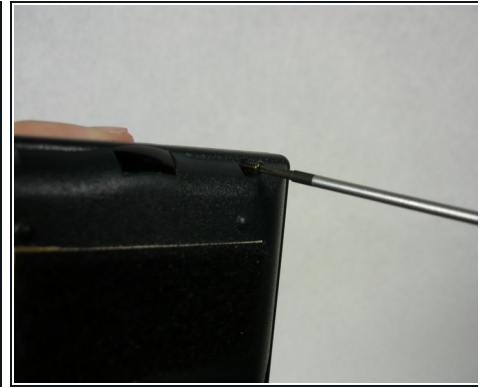
- Turn the device over so it is face down and remove the stylus, and battery cover.

Step 2



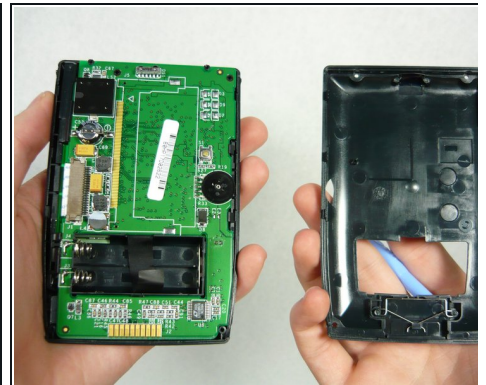
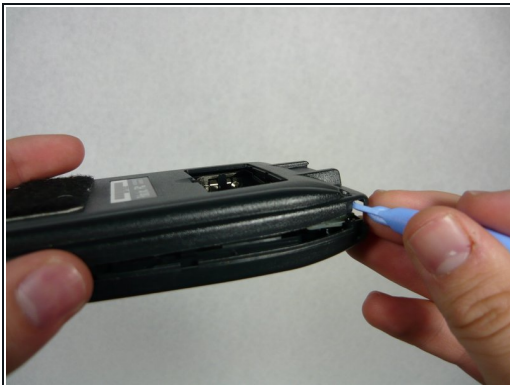
- Now remove the two batteries by pulling on the cloth black tab.
 - ① Remember, when inserting the batteries, to keep the tab below them to make it easier to remove the batteries in the future.
- If this tab is not visible, use the flat head screwdriver and gently pry out the batteries by pushing on the positive end (opposite the spring).

Step 3 — Motherboard



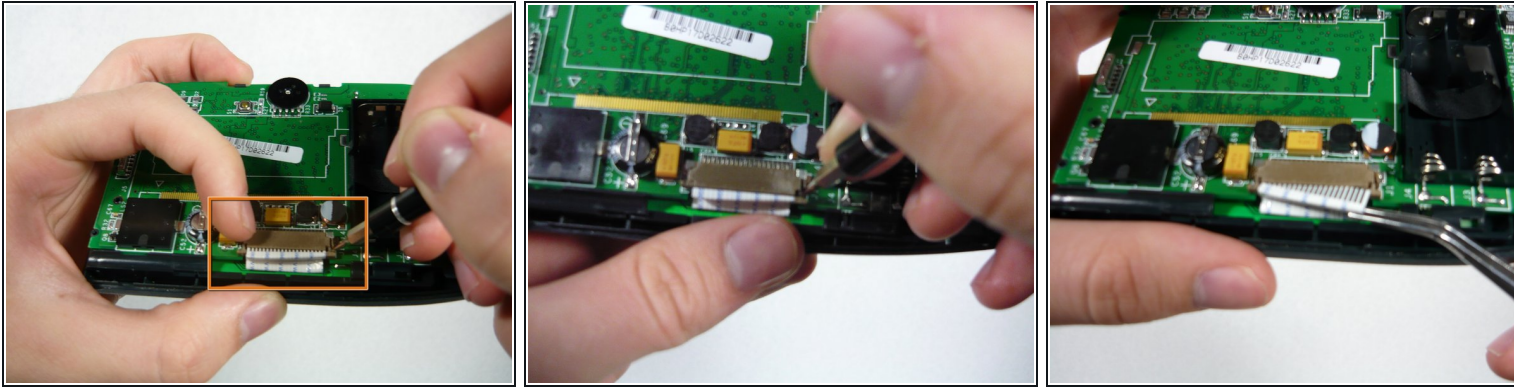
- ❗ It is recommended that you do the disassembly over a cookie sheet so you don't lose any small parts . Zip-loc bags are great for keeping the four small screws all in one place.
- Using a Philips #0 or #00 screwdriver, locate and unscrew the four screws holding the back cover on the device.
- ❗ Make sure to keep these screws in a bag or somewhere you will not lose them.

Step 4



- Take the plastic opening tool and insert into the seam between the two covers and pop off the cover then set it aside.
- ❗ You may need to do this multiple places around the perimeter to undo all the snaps but it should come off with little pressure.

Step 5

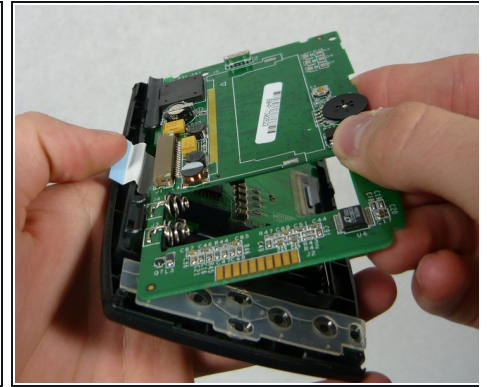
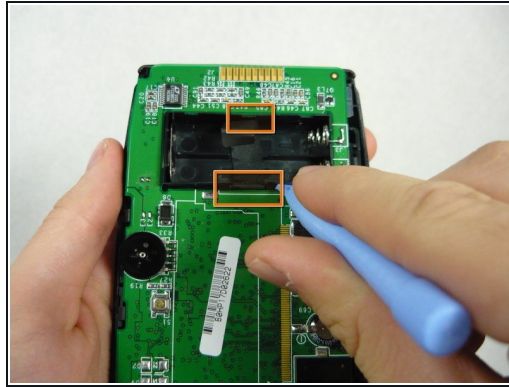
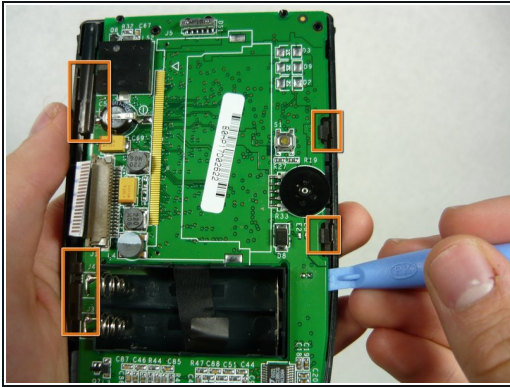


i This is a delicate part and may require a magnifying lens.

- Locate the brown serial connector on the left side of the device. Using the flat head screw driver, push the little tabs (one on each side) out towards you as pictured.
 - They should extend about 1/16 of an inch (1.5 mm).
- Now take the screwdriver/tweezers and gently pry out the serial tab as shown .

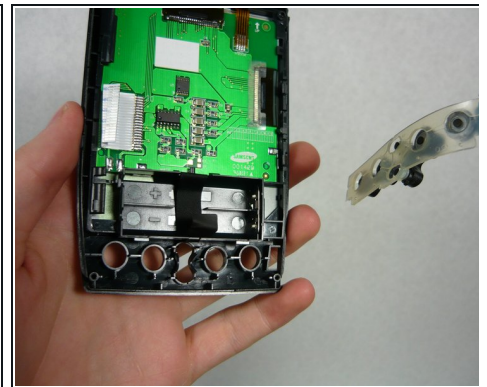
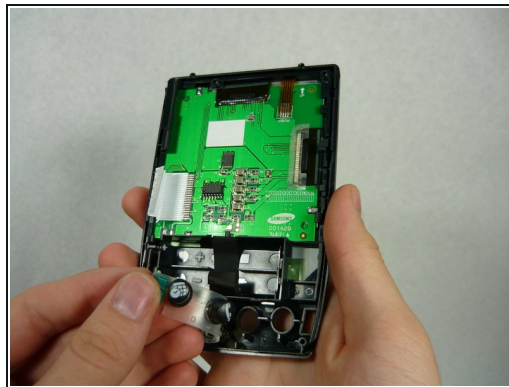
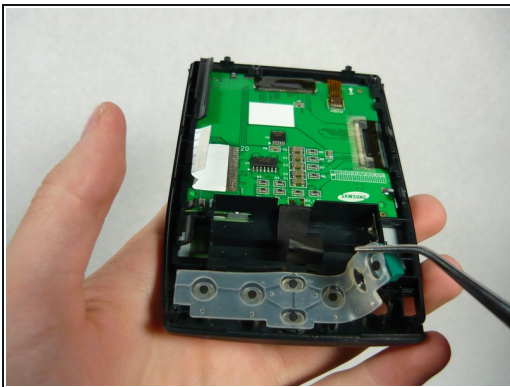
! It is flexible but don't bend it back and forth too much as it will eventually break.

Step 6



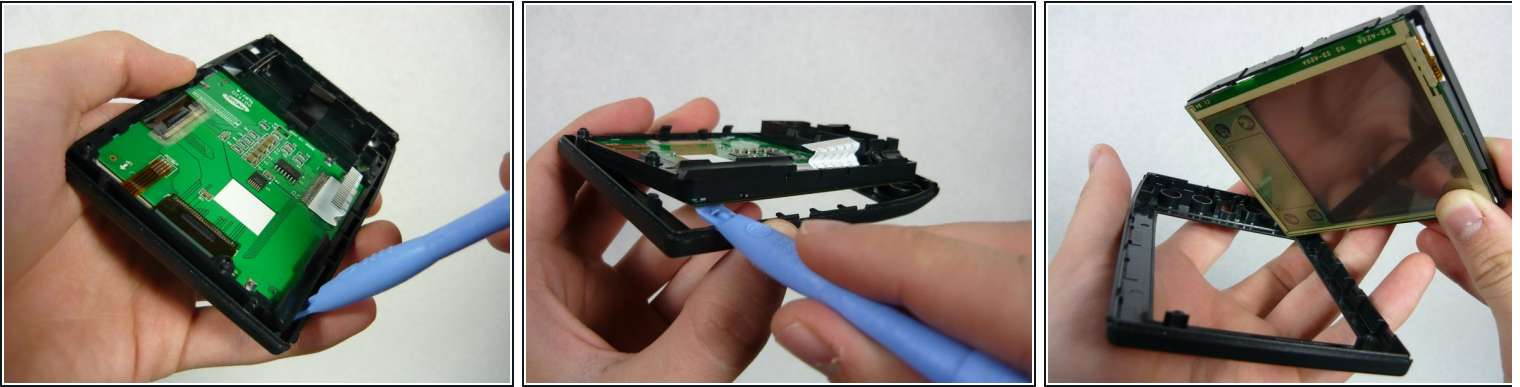
- Take the plastic opening tool and gently pry the circuit board out of the plastic tabs around the perimeter located as shown.
- You must also pry the circuit board away from the battery case (picture 2).
- Now gently lift up the circuit board from the right side and set it on the cloth.
 - ❗ Remember, when reinserting the circuit board, insert it under the left tabs at an angle then gently press the right side down. (picture 3) Also keep the serial tab out of the way.

Step 7 — Button



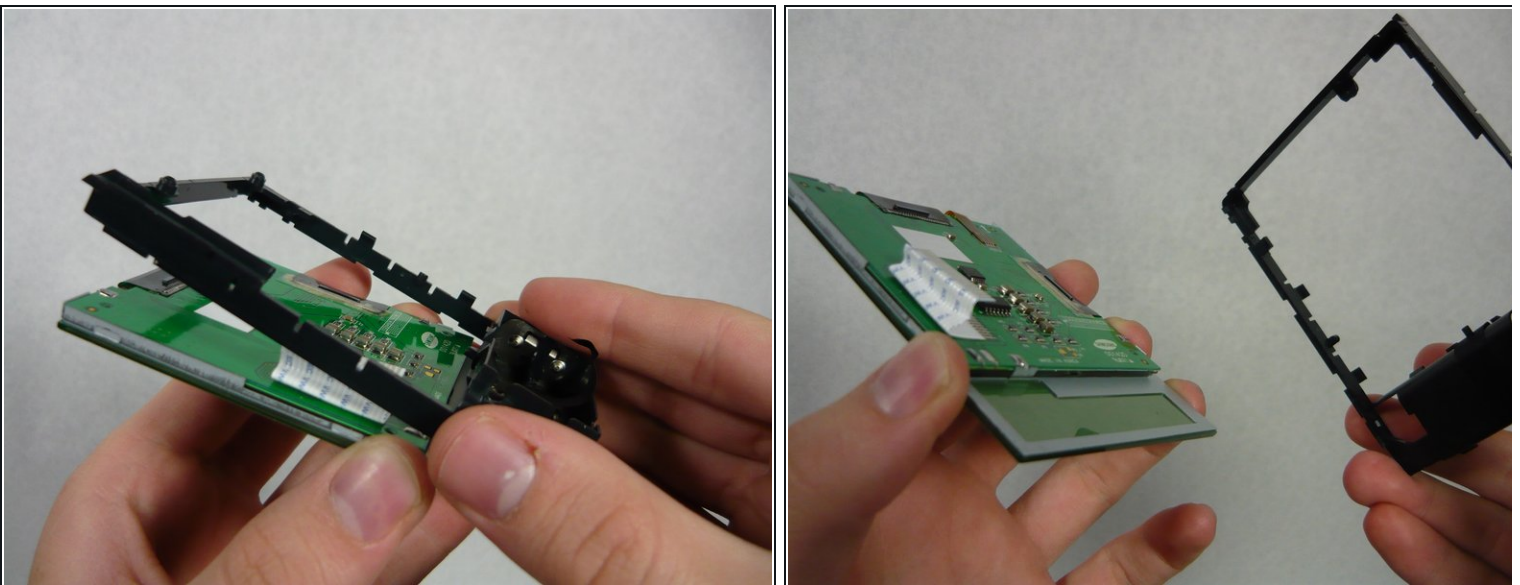
- Use the tweezers, or your fingers, to remove the physical button strip.
 - ❗ If any buttons fall off the strip simply place them back on: they fit on in specific orientations so don't force them on; look at the shape of the hole in the button.

Step 8 — Screen



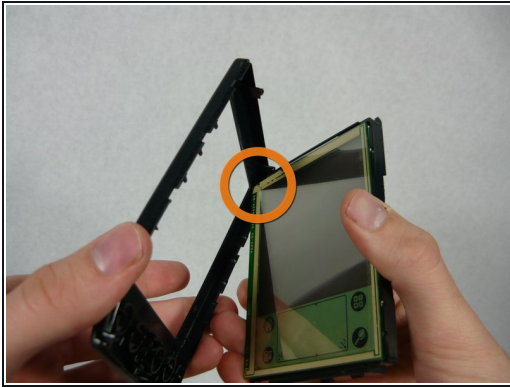
- Use the ipod opening tool to pry the cover from the internal plastic frame; the internal frame and screen will come off at the same time.
 - ❗ This can also be done with just your fingernails if you wish.
- Place the front cover aside.

Step 9



- The screen and internal frame should come apart easily. Set the screen on the cloth.

Step 10



- For reassembly: Take the frame/screen assembly and line up the top left corner of it to the corresponding corner of the front cover. (two views shown)
⚠ Be careful not to tilt the screen too much as it will fall out of the plastic frame.
- Now press the two parts together. Once together keep the screen facing down because it may fall out again.

To reassemble your device, follow these instructions in reverse order.