



# Toshiba Satellite M45 Keyboard Replacement

How to replace a Toshiba Satellite M45 keyboard.

Written By: Aryn Pauly



---

# INTRODUCTION

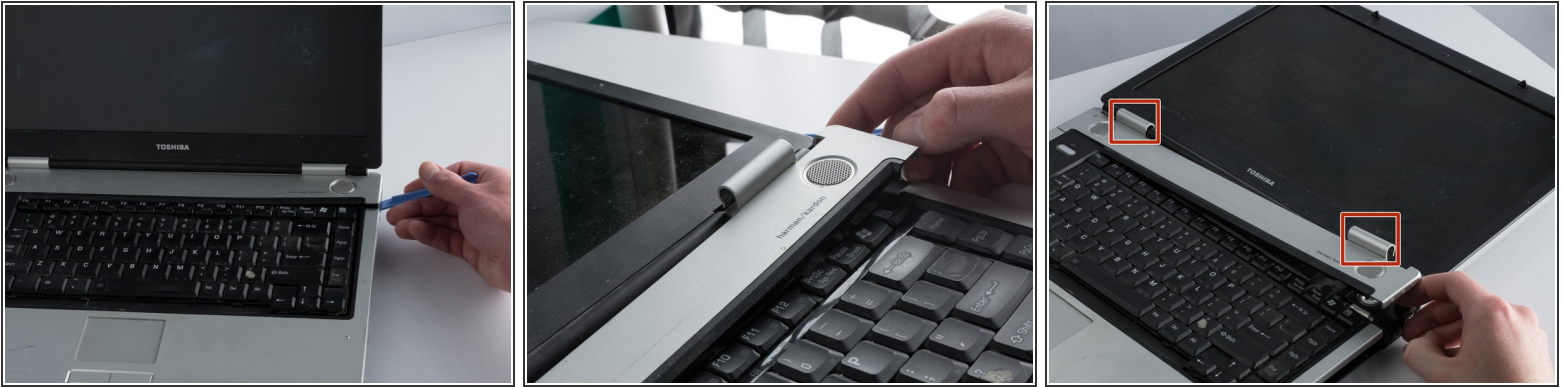
This guide will show you how to replace your keyboard.



## TOOLS:

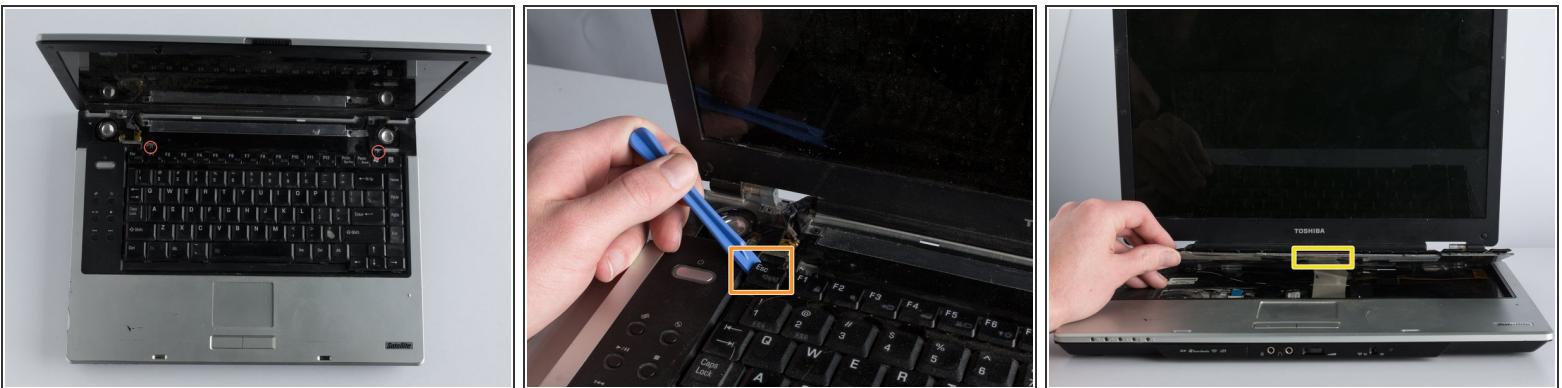
- [Phillips #1 Screwdriver](#) (1)
  - [iFixit Opening Tool](#) (1)
-

## Step 1 — Keyboard



- Carefully use the blue iFixit Opening Tool to pry the panel above the keyboard from the left and right side.
- Push back the screen until it is flat with the laptop.
- Gently remove the clips that connect the panel to the screen.

## Step 2



- Use the Phillips #1 screwdriver to remove the two screws.
- Gently pry the keyboard from the laptop using the blue iFixit opening tool.
- Slowly lift the keyboard away from the laptop.
  - Remove the ribbon that connects to the laptop.

⚠ Ensure you remove the keyboard slowly to avoid damaging the ribbon cable.

To reassemble your device, follow these instructions in reverse order.