



MacBook Unibody Model A1278 Hard Drive Bracket with Sleep Sensor Replacement

Replace the hard drive bracket and sleep sensor cable assembly in a MacBook Unibody Model A1278

Written By: Sam Goldheart



INTRODUCTION

Use this guide to replace the hard drive bracket nearest the front edge of your MacBook Unibody Model A1278. This bracket also contains the infrared sleep sensor and its cable.



TOOLS:

- [Phillips #00 Screwdriver](#) (1)
- [Spudger](#) (1)



PARTS:

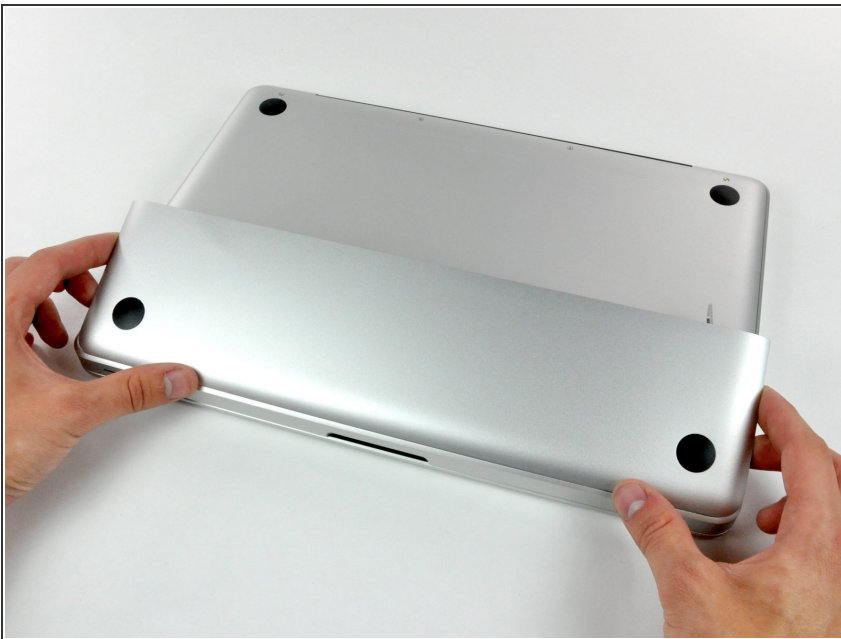
- [MacBook 13" Unibody Front Hard Drive Bracket with IR Sleep](#) (1)

Step 1 — Access Door



- With the case closed, place the Unibody top-side down on a flat surface.
- Depress the grooved side of the access door release latch enough to grab the free end. Lift the release latch until it is vertical.

Step 2



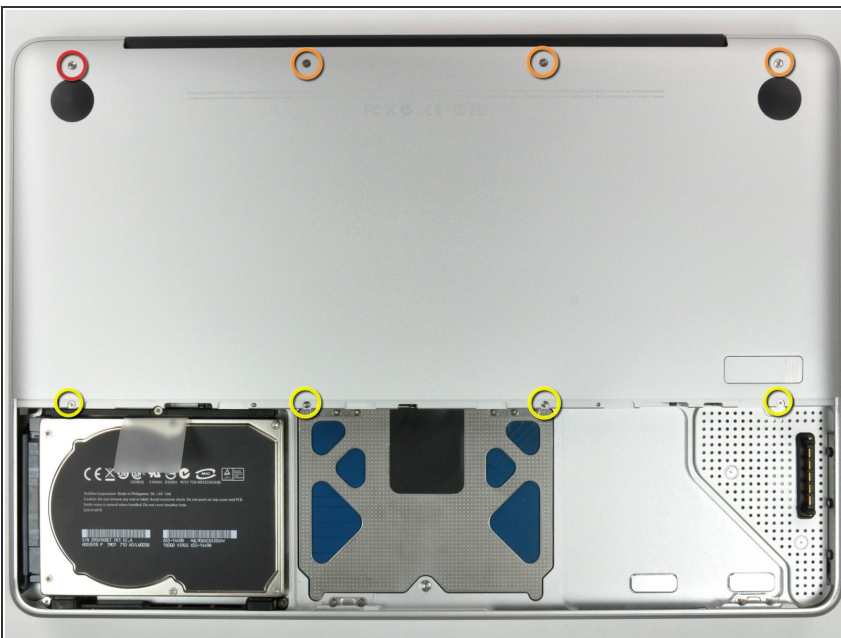
- The access door should now be raised enough to lift it up and out of the Unibody.

Step 3 — Battery



- ❗ Be sure the access door release latch is vertical before proceeding.
- Grab the white plastic tab and pull the battery up and out of the Unibody.

Step 4 — Lower Case



- Remove the following eight screws securing the lower case to the chassis:
 - One 3 mm Phillips screw.
 - Three 13.5 mm Phillips screws.
 - Four 3.5 mm Phillips screws.

Step 5



- Using both hands, lift and remove the lower case off the upper case.

Step 6 — Optical Drive



- Using the flat end of a spudger, pry the subwoofer connector straight up off the logic board.

⚠ On some models, the subwoofer connector is soldered to the logic board and will break if you pry it off. If you need to replace the speaker/subwoofer, you can pull back the foam padding on the connector and remove the red and black wires to disconnect. You will need to reinsert the wires from the new speaker to reconnect.

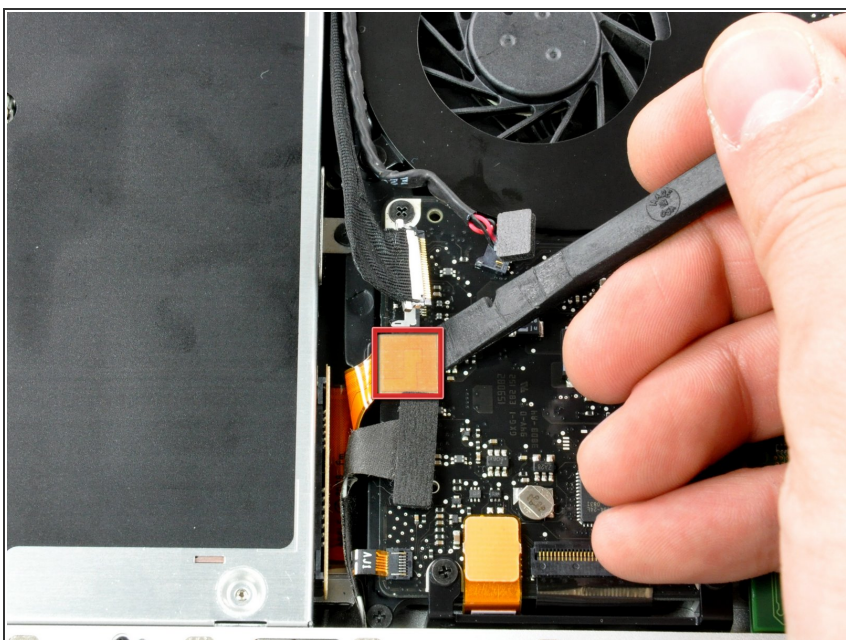
ⓘ If you are only removing the optical drive and not replacing the speaker/subwoofer, you do not need to disconnect this connector.

Step 7



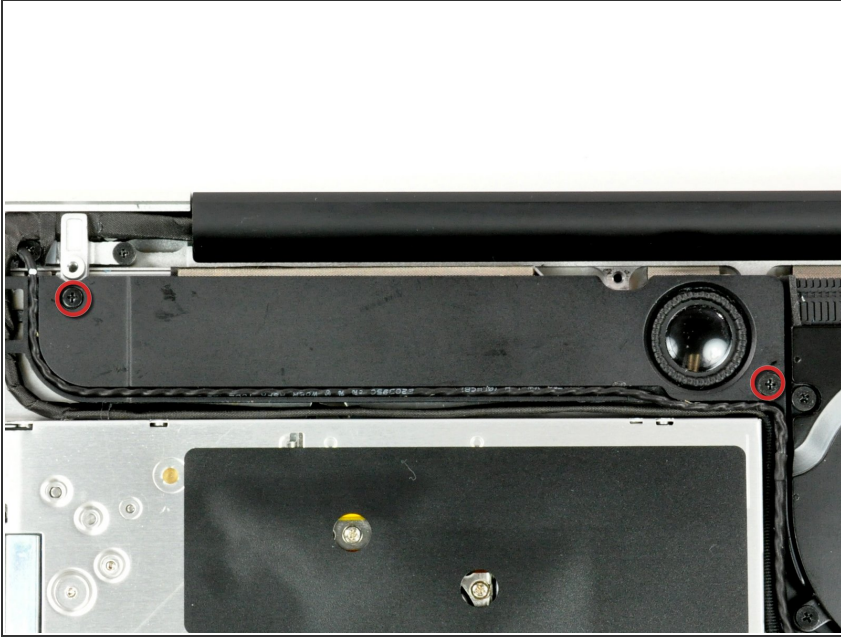
- Disconnect the camera cable by pulling the male end straight away from its socket.

Step 8



- Use a spudger to pry the optical drive connector straight up off the logic board.

Step 9



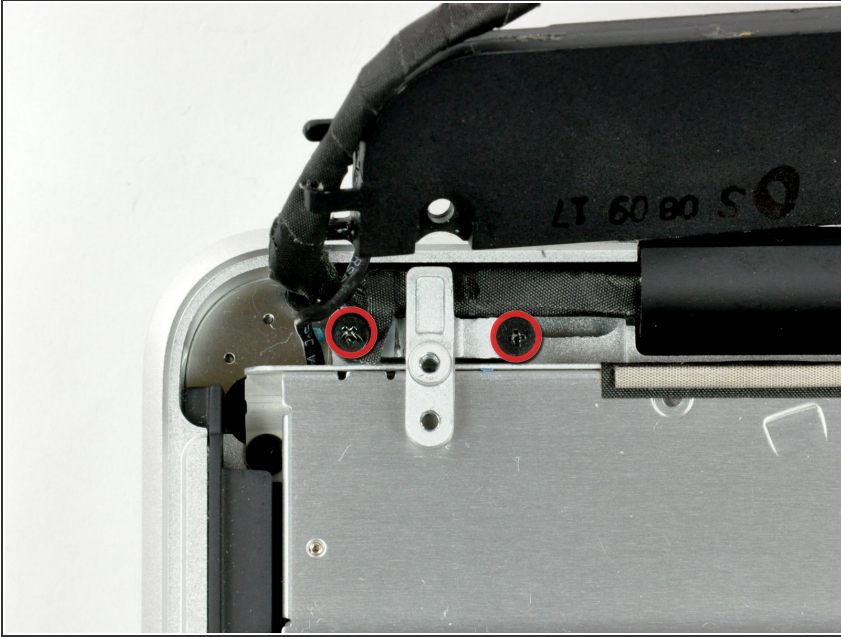
- Remove the two Phillips screws securing the subwoofer to the upper case.
- ⓘ The longer of the two screws is on the right.

Step 10



- ⓘ The subwoofer is still connected to the right speaker, so don't completely remove it just yet.
- Lift the subwoofer off the optical drive, and set it above the computer.

Step 11



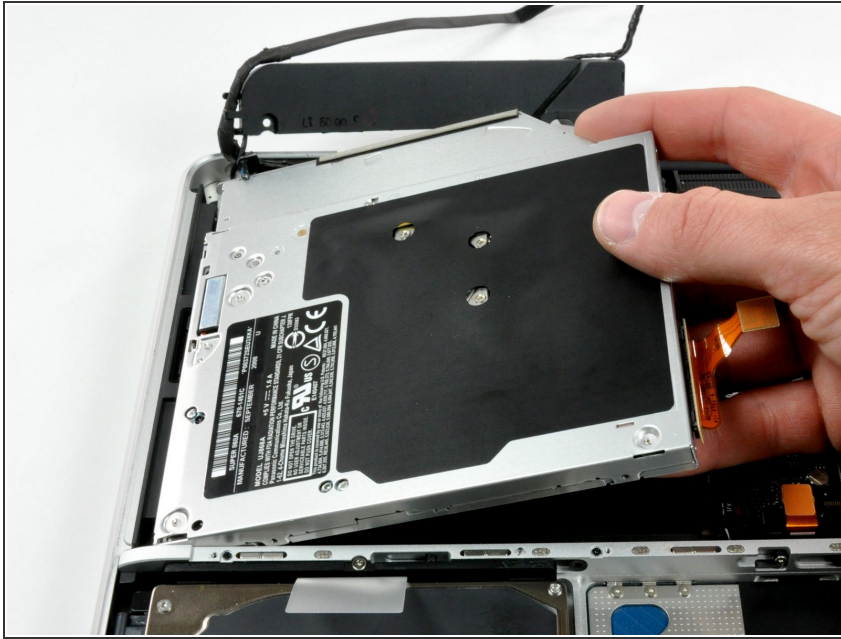
- Remove the two Phillips screws securing the camera cable bracket to the upper case.
- ⓘ The leftmost screw may remain captive in the camera cable.

Step 12



- Remove the three 2.5 mm Phillips screws securing the optical drive to the upper case.

Step 13



- Lift the optical drive from its right edge and pull it out of the computer.
- ✦ The hard drive cable may become disconnected from the logic board when removing the optical drive. Ensure it is connected during reassembly.

Step 14 — Hard Drive Cable



- Remove the single Phillips screw securing the hard drive bracket to the upper case.
- ⓘ This screw is captive in the hard drive bracket.

Step 15



- Lift the hard drive by its plastic pull tab and remove the freed hard drive bracket.

Step 16



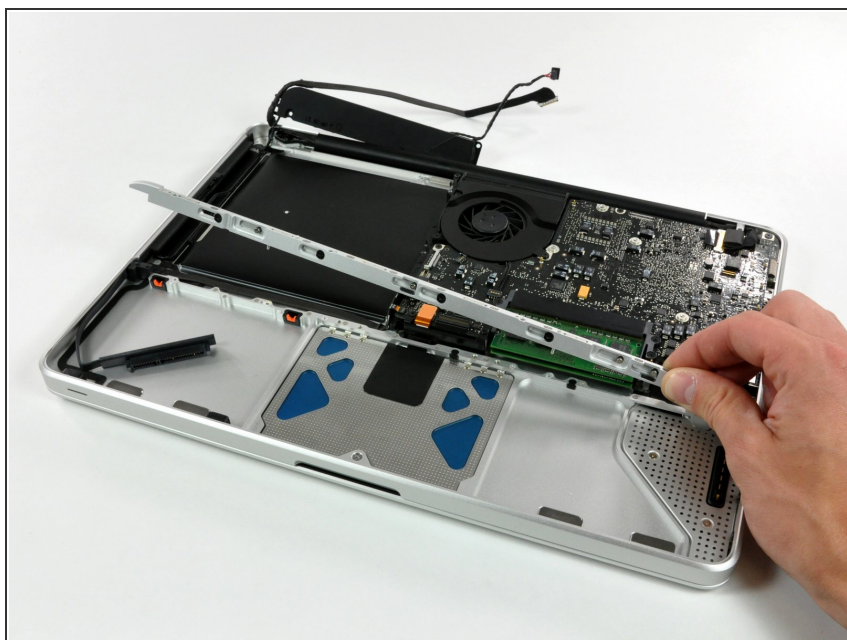
- Lift the hard drive out of its supports and disconnect the SATA cable by pulling the connector straight away from the hard drive.

Step 17



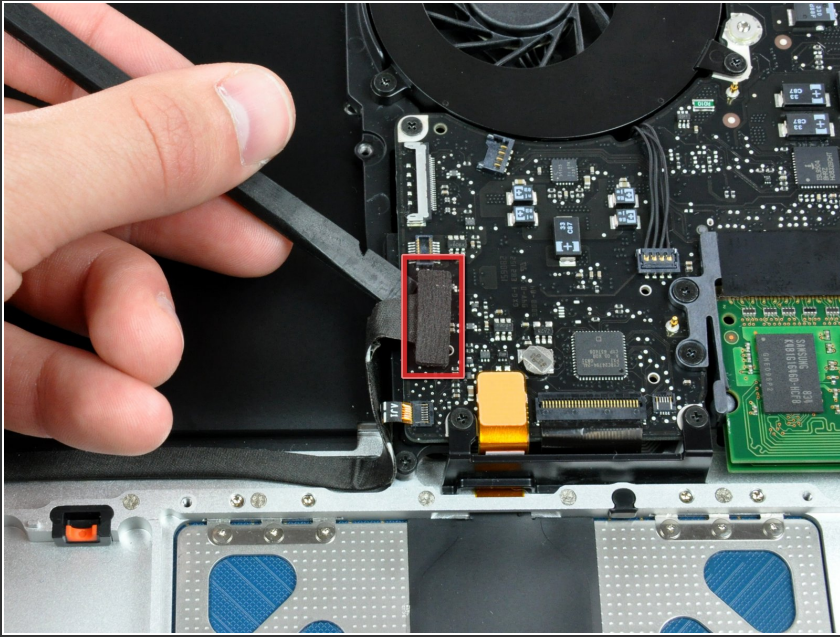
- Remove the four 10.3 mm Phillips screws securing the mid wall to the upper case.

Step 18



- Lift the mid wall out of the upper case.

Step 19



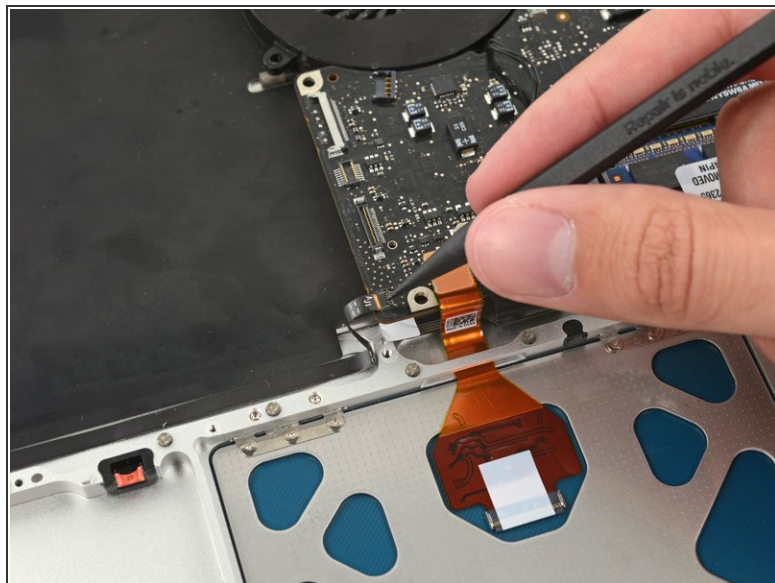
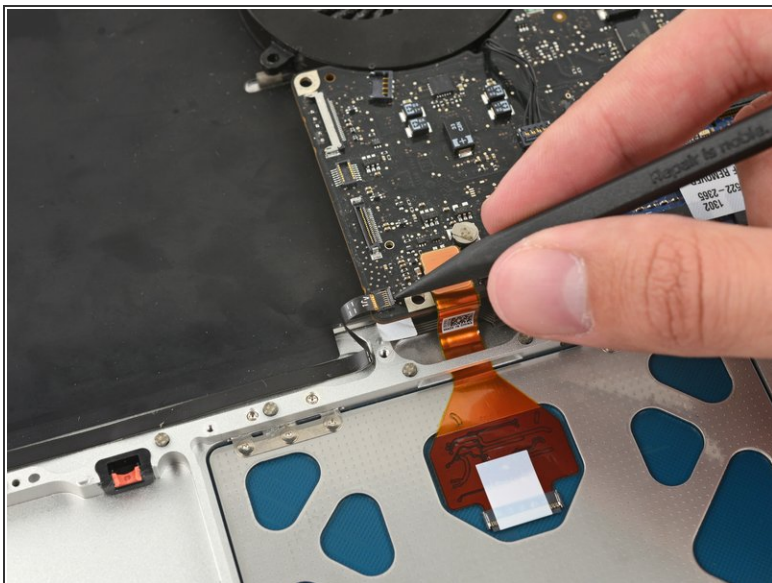
- Use a spudger to pry the hard drive cable connector straight up off the logic board.

Step 20



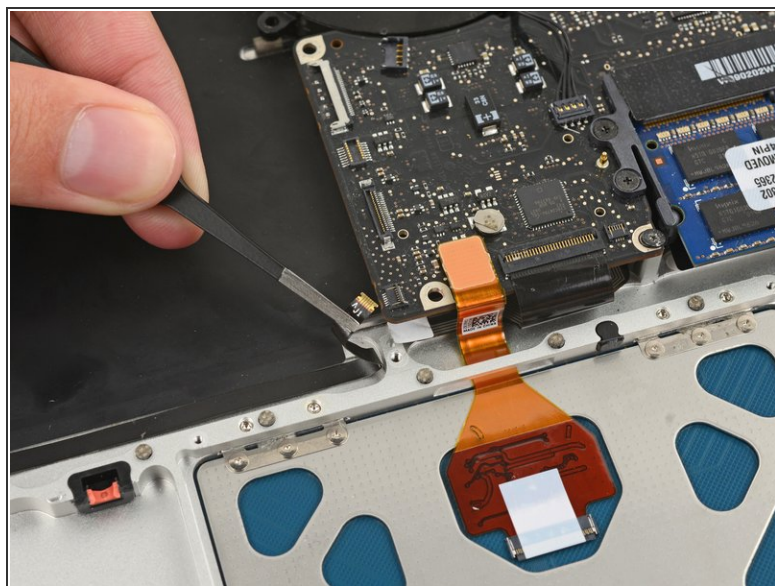
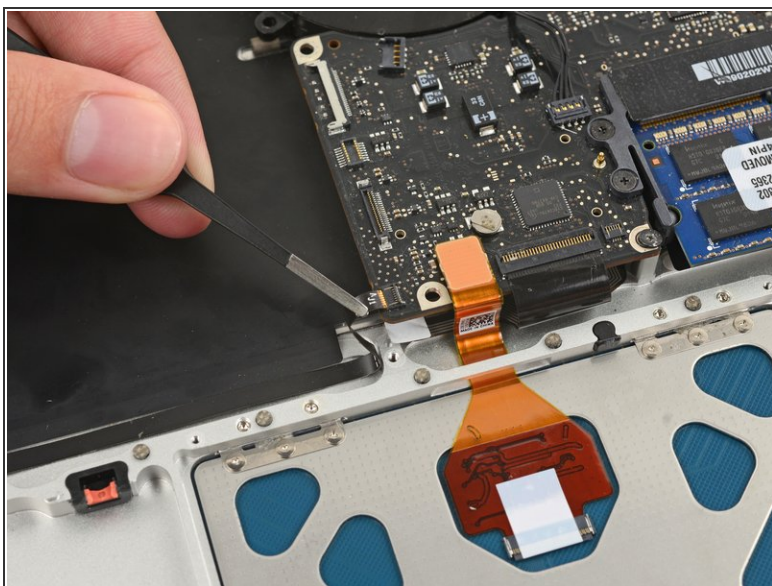
- Peel the hard drive cable from the adhesive securing it to the upper case, and maneuver the plastic retaining block out of the upper case.
- ☑ During reassembly, be sure the two pins on top of the plastic retaining block mate to the holes on the underside of the midwall.

Step 21 — Hard Drive Bracket with Sleep Sensor



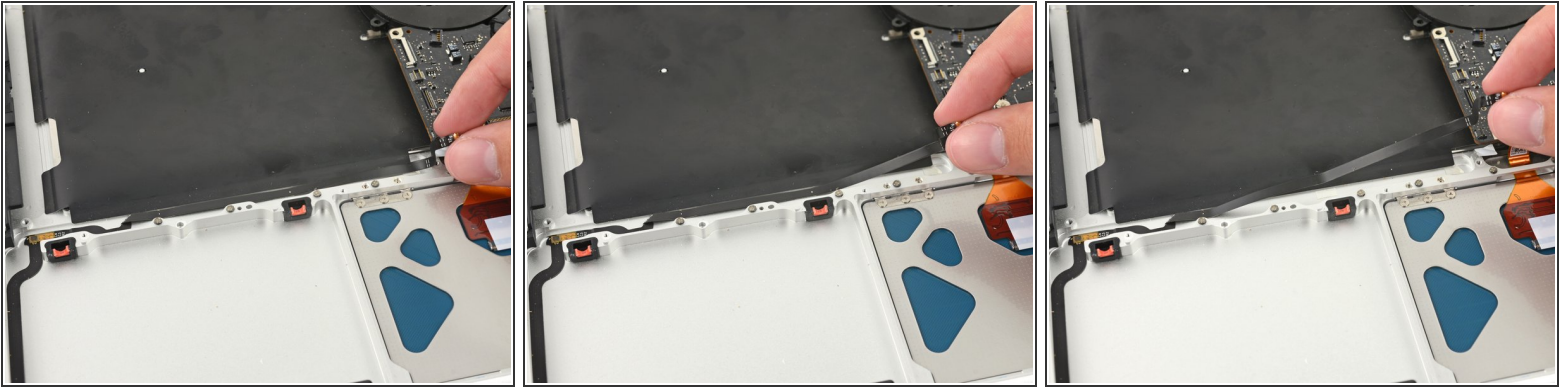
- Use the pointed end of a spudger to flip the lock on the ZIF connector.

Step 22



- Pull the hard drive bracket cable out of its socket.

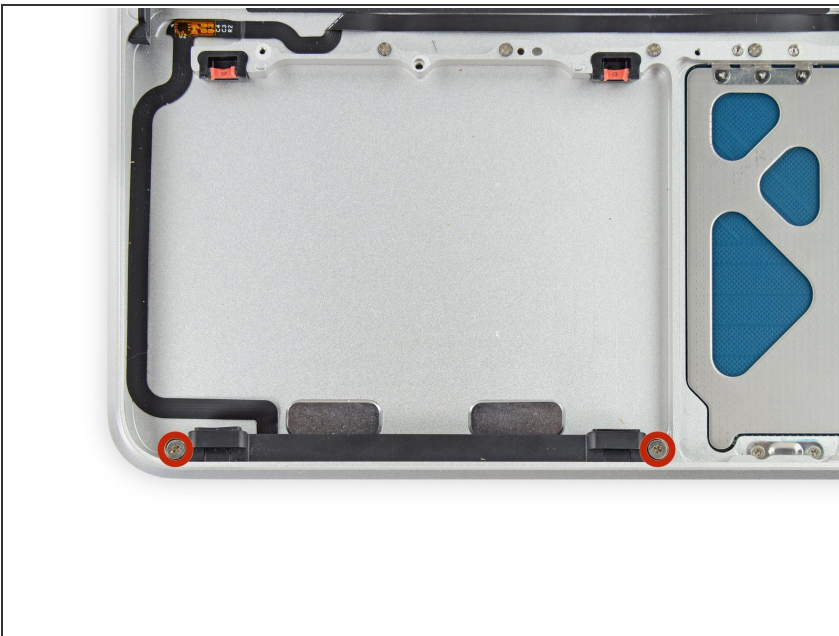
Step 23



- Peel the connector side of the sleep sensor cable up from the adhesive securing it to the upper case.

⚠ Be especially careful peeling the folded section of the cable, as this is area will be more easily damaged.

Step 24



- Remove the two 5 mm Phillips #00 screws securing the hard drive bracket to the upper case.

Step 25



- Insert the tip of a spudger between the hard drive bracket and the front edge of the upper case to free it from its recess.

Step 26



- Pull the hard drive bracket and sleep sensor assembly out from the recess in the upper case.
- ⚠ Remove the bracket slowly and carefully to ensure you do not rip the sleep sensor cable, which may still be adhered to the upper case.

Step 27



- After ensuring the cable is freed of all adhesive, remove the hard drive bracket and sleep sensor assembly from the upper case.
- ★ If your new bracket cable is not pre-folded, use the old one as a guide to crease it for proper fit in your MacBook.

To reassemble your device, follow these instructions in reverse order.