



Installing BMW OEM Aux cable in 2003 BMW 5 Series

Installing the BMW Aux input cable in the 2003 5 Series. Guide shows car with navigation, however 2003 5 Series BMWs both with and without navigation support Auxillary Audio input

Written By: Martin Bishop



This document was generated on 2020-11-20 12:24:08 AM (MST).

INTRODUCTION

Installing the BMW Aux input cable in the 2003 5 Series. Guide shows car with navigation, however 2003 5 Series BMWs both with and without navigation support Auxillary Audio input



TOOLS:

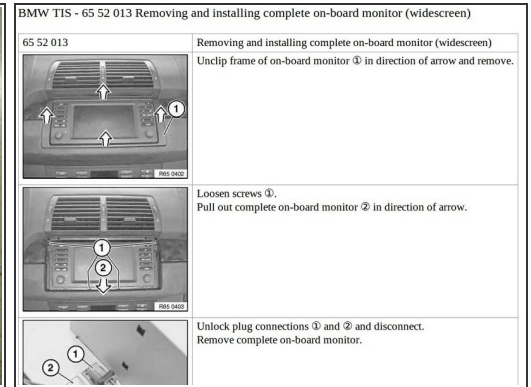
- [Screwdriver](#) (1)



PARTS:

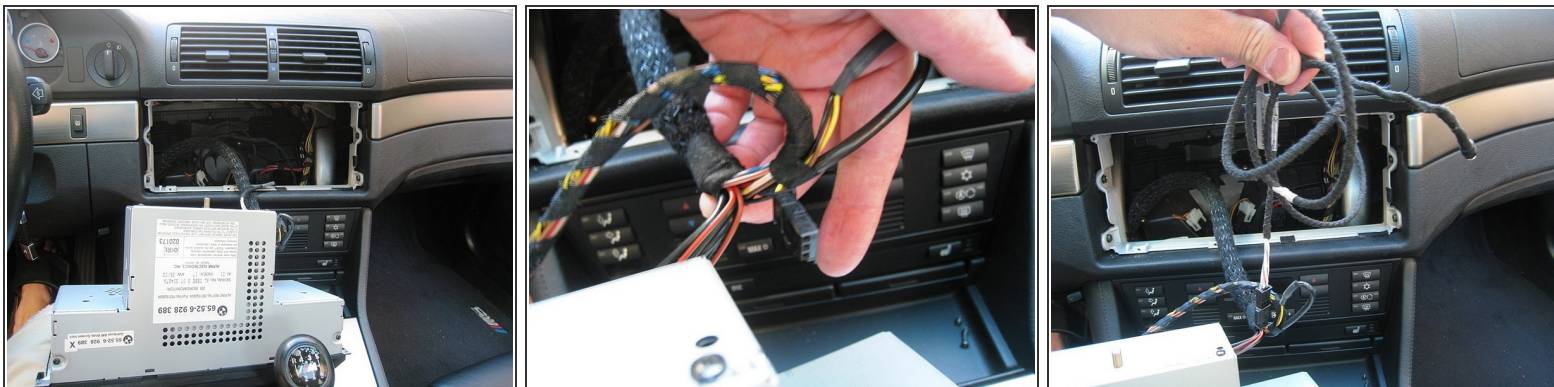
- [BMW Aux Cable](#) (1)

Step 1 — Installing BMW OEM Aux cable in 2003 BMW 5 Series



- BMW 5 Series built after 09/02 production support the factory BMW Auxiliary Audio input cable.
- For Aux Support you will need a BMW Auxiliary Audio input cable and a small phillips head screw driver
- To remove the display press the arrow button to display the cassette tape. Insert a cassette tape half way into the slot to keep the display from closing.
- With your fingers remove the plastic trim surrounding the nav unit. It is connected with snaps in the top corners and bottom.
- With your small phillips screw driver remove the 4 small black screws around the display. Be careful and have a magnet nearby to help remove the screws without losing.

Step 2



- The Aux input cable connects too the wiring plug behind the navigation display. In cars without navigation, the process is the same, but you will remove the radio headunit instead of the navigation display
- With the navigation display removed, locate the 3 pin Aux Audio plug on the harness
- Simply plug in your 3 pin male plug on the Auxillary Audio input cable into the 3 pin female plug in the car
- Once connected run the Auxillary Audio input wiring to your desired location.

Step 3



- Mount Auxillary Audio input headphone jack in your preferred location. BMW recommends the Glovebox. You may mount wherever desired
- Reinstall Navigation display and you may now use the MODE button to select Aux as your audio source.

Step 4



- Once installed connect your audio device to the Aux Audio Input plug and use the MODE button to select AUX on your radio display

To reassemble your device, follow these instructions in reverse order.