



Toshiba Satellite M45 Speakers Replacement

Replacing the internal speakers on a Toshiba Satellite M45.

Written By: Stephen



INTRODUCTION

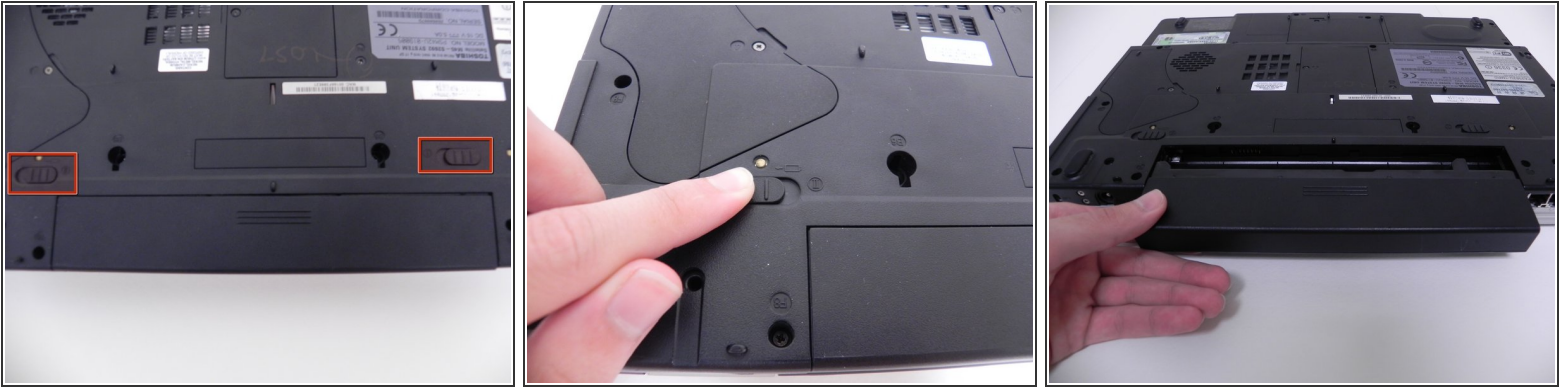
This is a very difficult guide by the average user and is recommended to use headphones or external speakers.



TOOLS:

- [Phillips #1 Screwdriver](#) (1)
 - [Phillips #00 Screwdriver](#) (1)
 - [iFixit Opening Tool](#) (1)
-

Step 1 — Battery



⚠ Make sure device is off and power supply is disconnected.

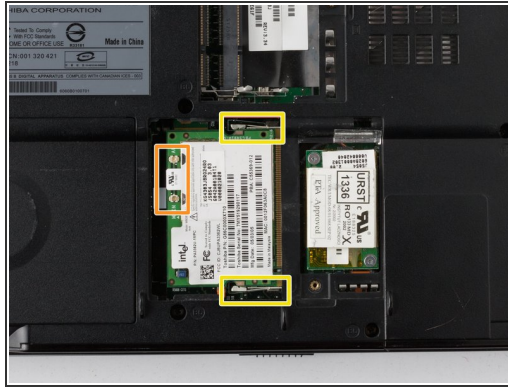
- Flip the laptop to the bottom side.
- Locate and slide the two battery locks to disconnect the battery.
- Remove the battery by sliding it out away from the computer (horizontal with the casing).

Step 2 — RAM



- Use a #1 Phillips head screwdriver to remove the screw on the middle right of the RAM's cover panel.
- Then, use a the blue iFixit Opening Tool to pry the cover panel off.
- Push on to the RAM tabs to disconnect the RAM form the device.
- The RAM will pop off from the socket. Gently pull the RAM out of the socket.

Step 3 — Wi-Fi Card



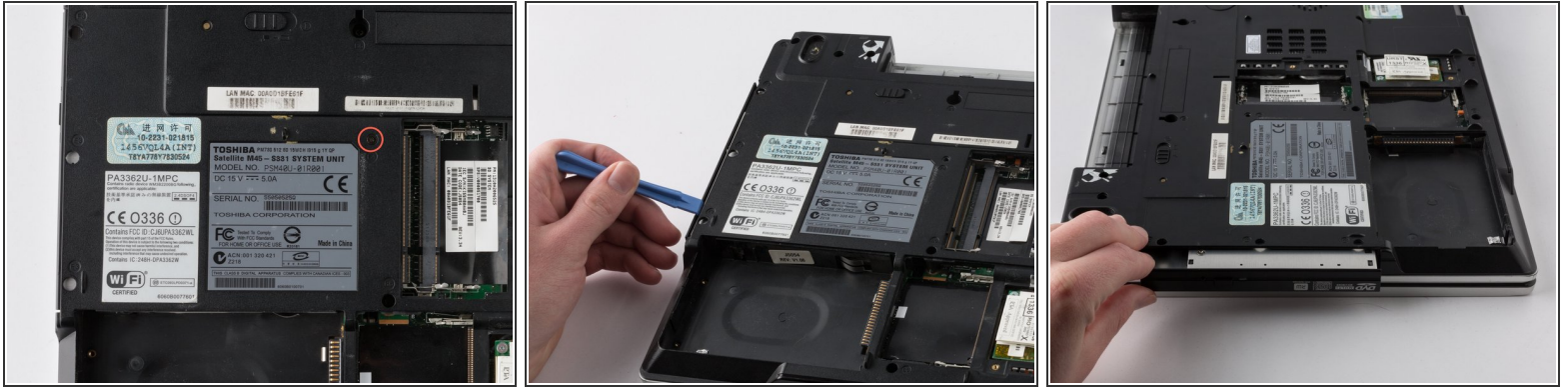
- Use the #1 Phillips head screwdriver to unscrew the panel.
- Disconnect the black and white wires.
- Push on the tabs to disconnect the Wi-Fi card.
- Use the blue iFixit Opening Tool to pull the Wi-Fi Card out.

Step 4 — Hard Drive



- Use the #1 Phillips head screwdriver as to remove the hard drive screw.
- Use the blue iFixit Opening Tool to pry the cover off.
- Use the plastic flap to pull the hard drive out of its slot.

Step 5 — Optical Drive



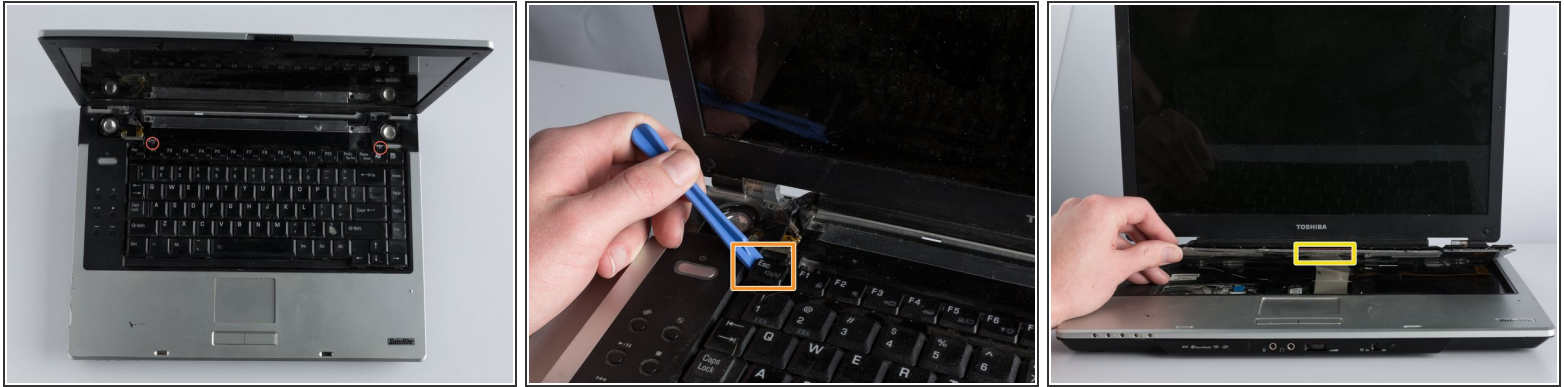
- Use the #1 Phillips head screwdriver remove the Optical Drive screw.
- Use the blue iFixit Opening Tool to pry the Optical Drive out of the slot from the side of the casing.
- Use your hands to pull the rest of the Optical Drive out.

Step 6 — Keyboard



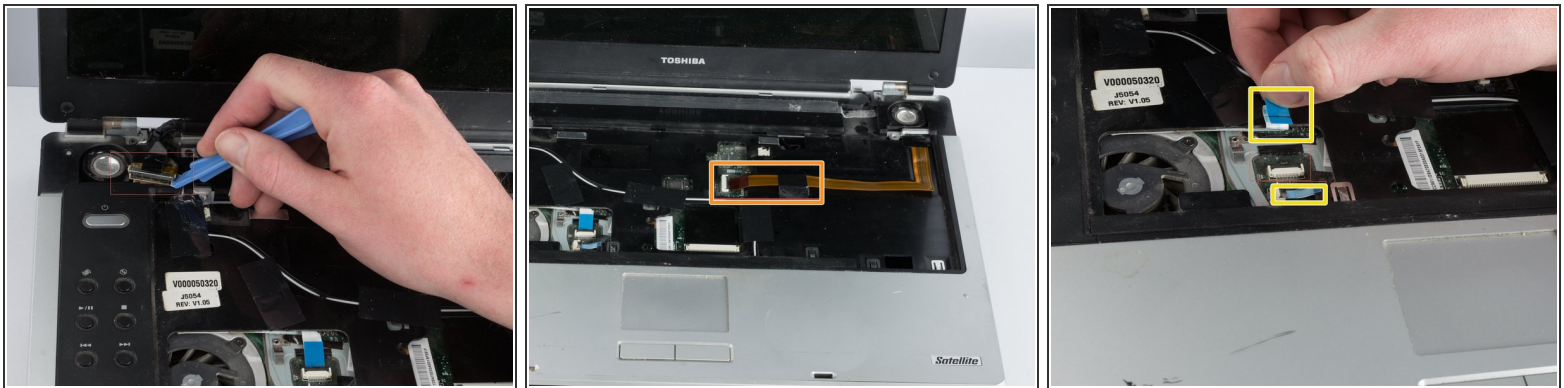
- Carefully use the blue iFixit Opening Tool to pry the panel above the keyboard from the left and right side.
- Push back the screen until it is flat with the laptop.
- Gently remove the clips that connect the panel to the screen.

Step 7



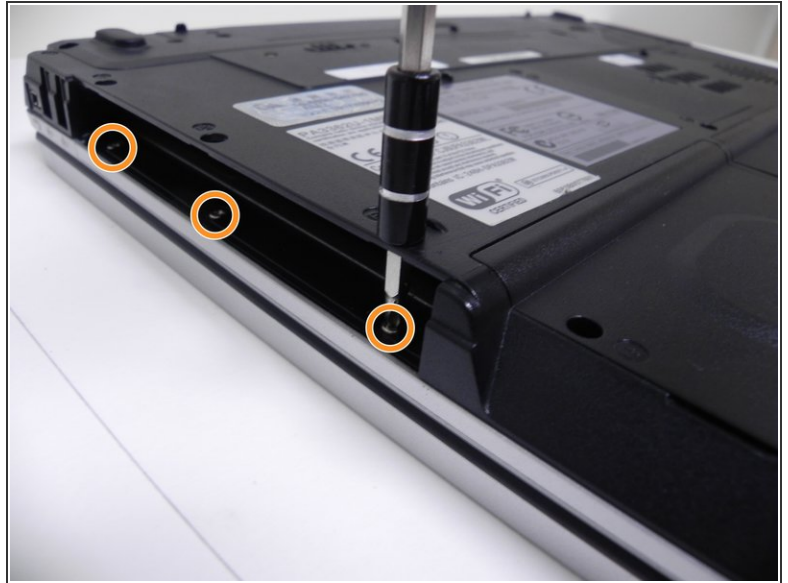
- Use the Phillips #1 screwdriver to remove the two screws.
 - Gently pry the keyboard from the laptop using the blue iFixit opening tool.
 - Slowly lift the keyboard away from the laptop.
 - Remove the ribbon that connects to the laptop.
- ⚠ Ensure you remove the keyboard slowly to avoid damaging the ribbon cable.

Step 8 — Motherboard



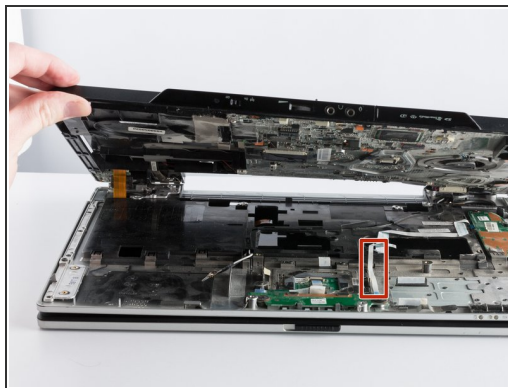
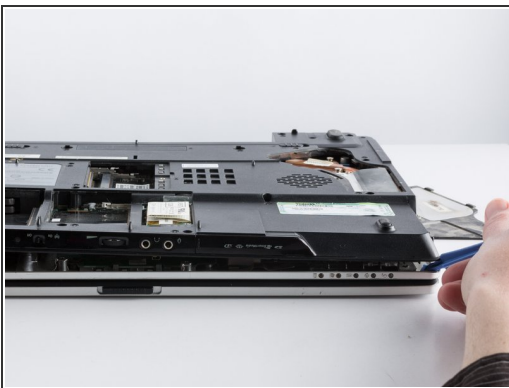
- Disconnect the video cable, then slowly and firmly pull the video cable upwards.
- Disconnect the brown ribbon located in the middle area of the laptop.
- Disconnect the two white ribbons located in the bottom left of the laptop.
 - Firmly pull out the two white ribbons.

Step 9



- Use the Phillips #00 Screwdriver to unscrew all the screws.
- Unscrew three additional screws through the three holes on the optical drive.

Step 10



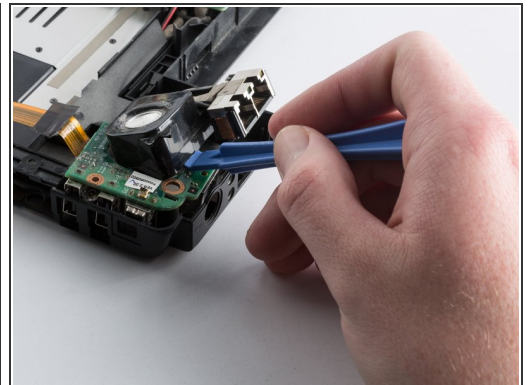
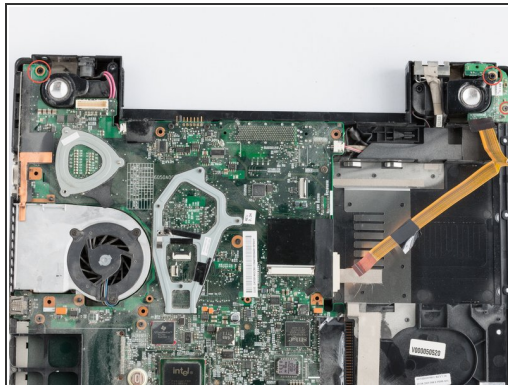
- Turn the laptop upside down.
 - Use the blue iFixit Opening Tool to slowly pry the case upward.
 - Remove the white ribbon
- i** Make sure to completely remove the white ribbon and set it to the right side of the motherboard. and not on top of the motherboard.

Step 11



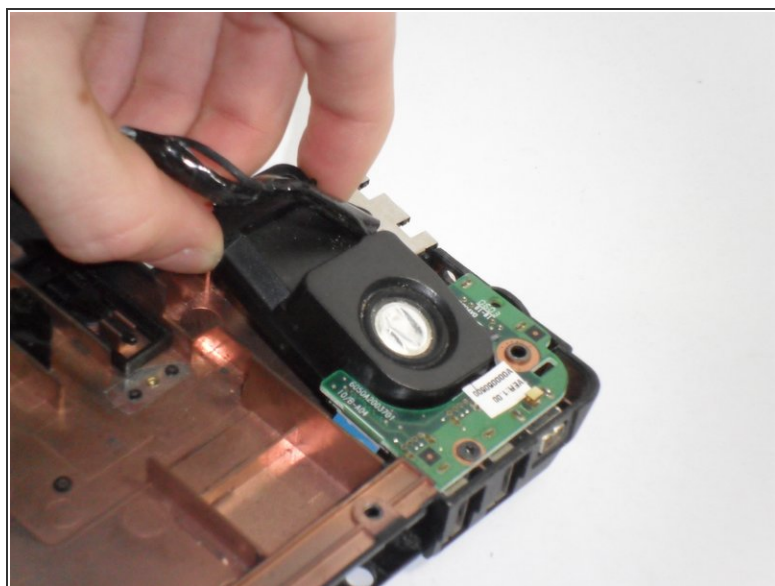
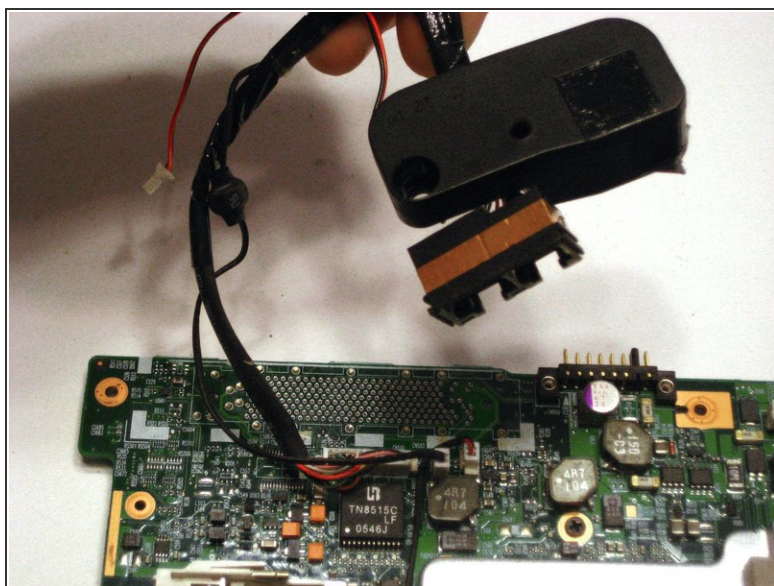
- Lift up the motherboard.
- ❗ Be careful not to rip out small components on the motherboard. Carefully remove the motherboard.

Step 12 — Speakers



- Located near the upper edges of the motherboard you will find the 2-speaker wires that trace to the speakers. You will see these white tab with black and red wires.
- Unscrew the 2-screws located above the speakers to remove them. Slowly pull up on the speakers as there are other port connectors are located near the wiring.

Step 13



- To remove the left speaker follow the motherboard repair guide to complete this step to keep this guide concise.
- Reverse the order after installing the new speakers.

To reassemble your device, follow these instructions in reverse order.