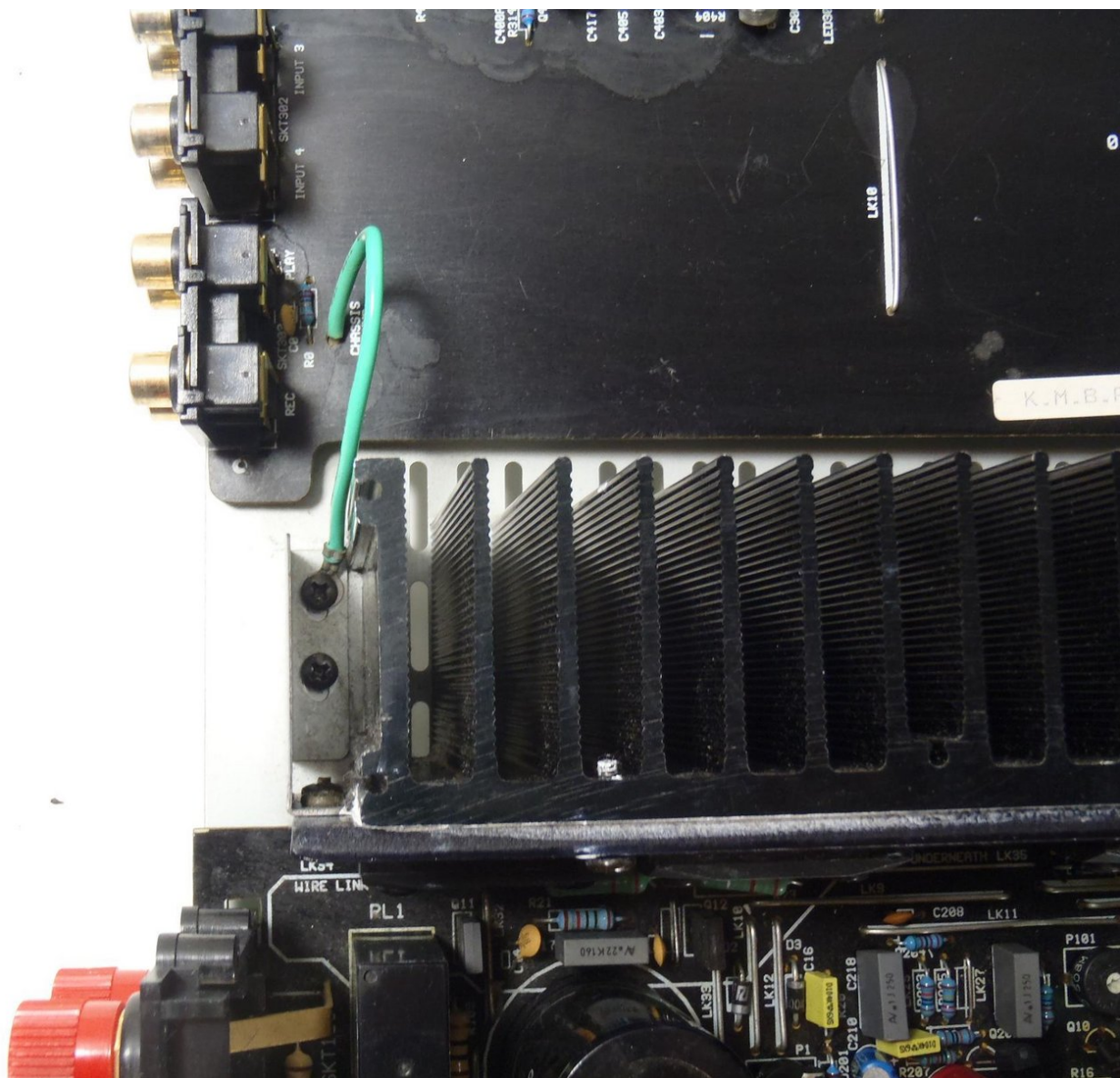




# Cambridge Audio A3i Motherboard Replacement

Written By: Colby



# INTRODUCTION

This guide describes the steps necessary to replace the motherboard of the system. This board contains the circuitry for the amplification, power, and output.

---

## TOOLS:

- [Large Needle Nose Pliers](#) (1)
  - [Phillips #2 Screwdriver](#) (1)
  - [Soldering Workstation](#) (1)
  - [Flush Wire Cutters](#) (1)
-

## Step 1 — Case



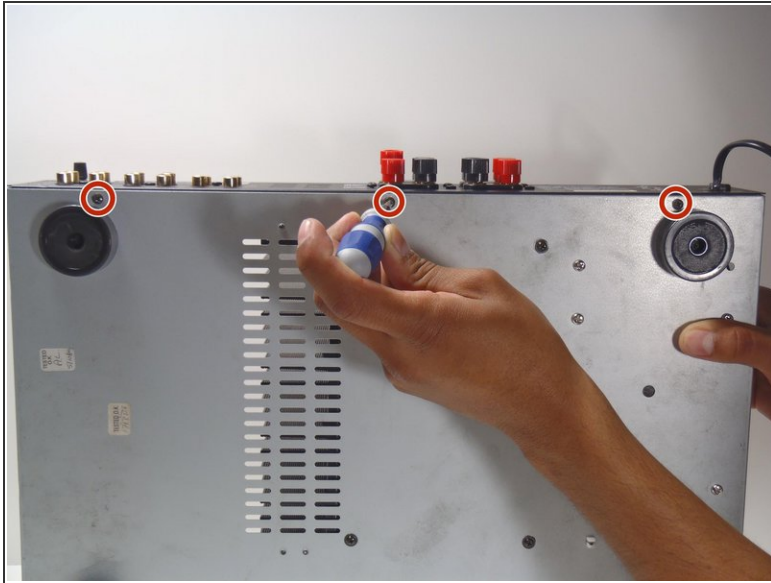
- Remove 2 screws from each side of the amplifier.

## Step 2



- Remove 2 screws on rear of device. Slide top cover up and back from main case.

## Step 3



- Remove 3 screws on bottom of case.
- Remove 13 screws on rear panel.
- ⓘ Do not move the rear panel too far, as the power cord is still connected.

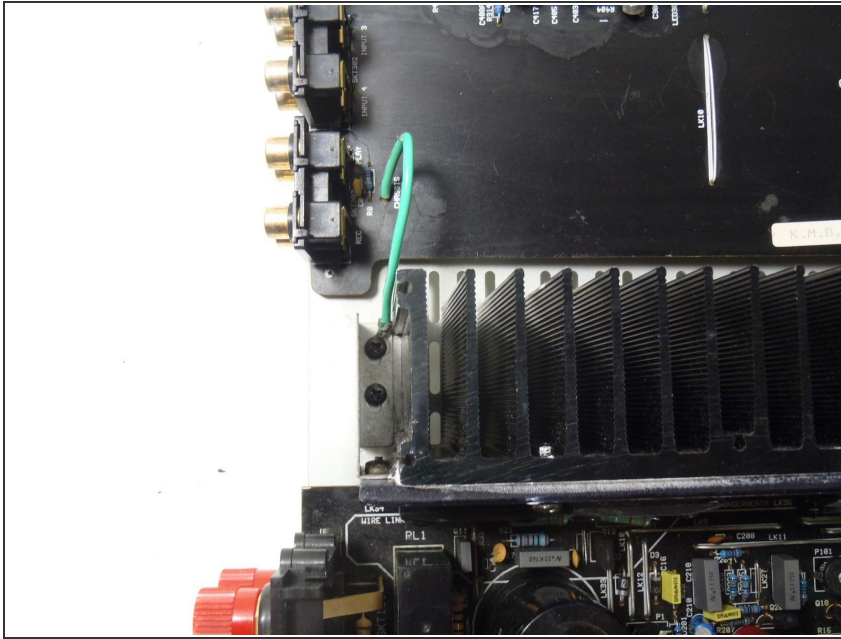
## Step 4



- Using a pair of pliers, squeeze the retainer for the power cord as shown and pull it toward the external side the panel.
- It may require some wiggling, but it should slip out of the hole and then off of the cord.

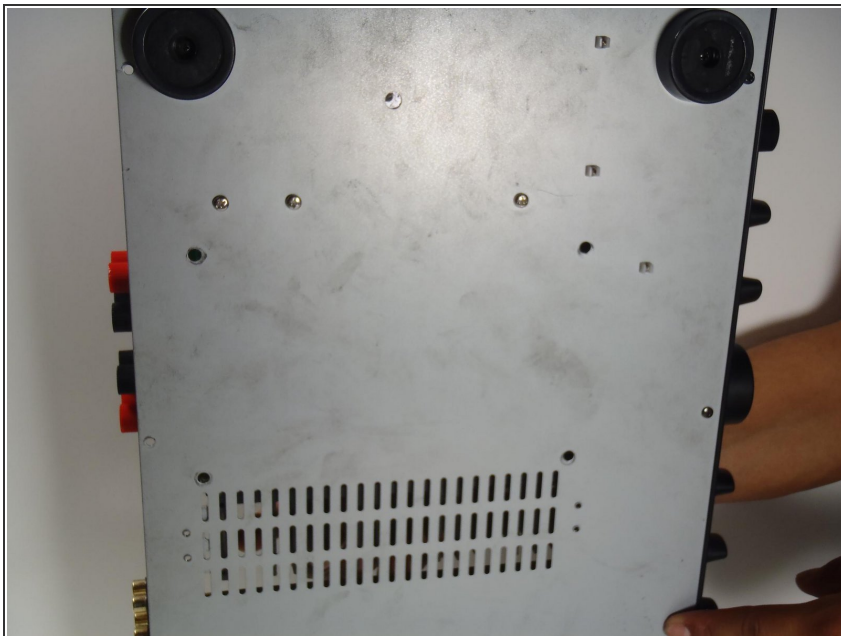


## Step 5 — Motherboard



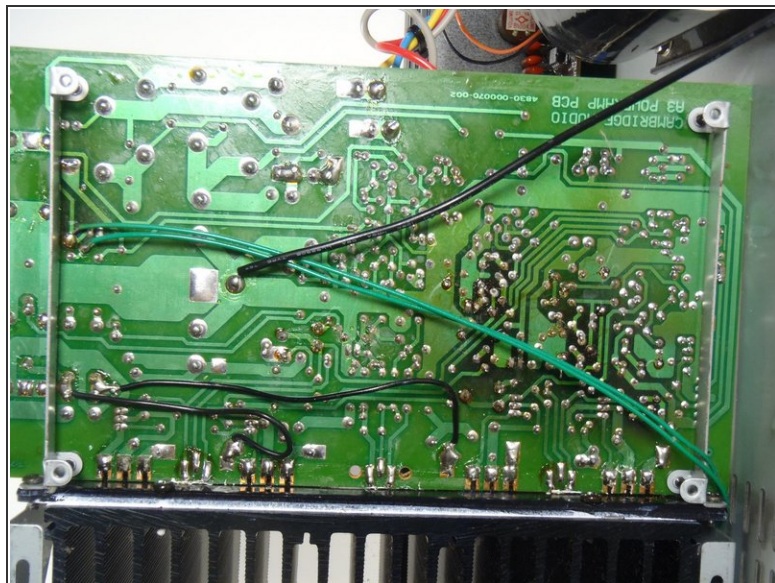
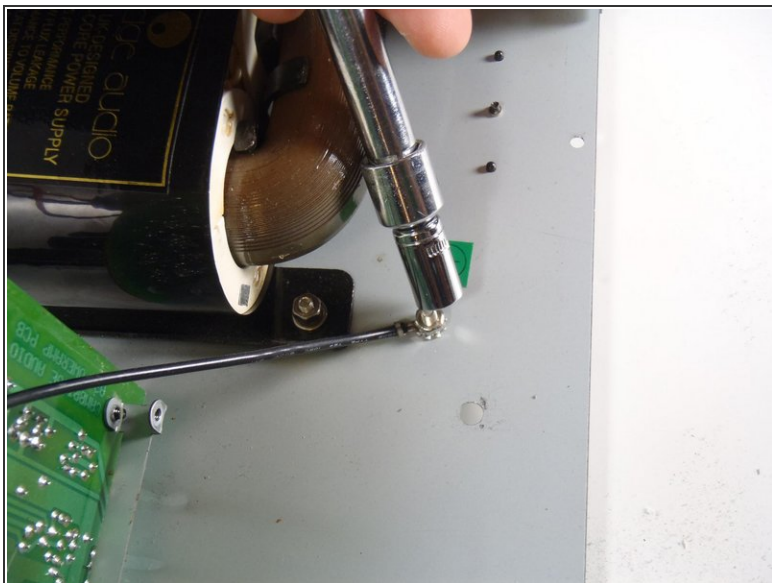
- Remove 2 screws from each side of the heatsink. These must be accessed from directly above the device.
- Remove the green grounding wire from the mounting screw.

## Step 6



- With the amplifier on it's side, remove the 4 screws that hold the motherboard frame to the main case.
- ⚠ Be sure to hold the motherboard with one hand while removing the mount screws.

## Step 7



- Unscrew ground wire from main case.
- De solder 4 wires coming from transformer.
- The motherboard can now be lifted from the case. Any part that needs to be removed from it can be de-soldered.

To reassemble your device, follow these instructions in reverse order.