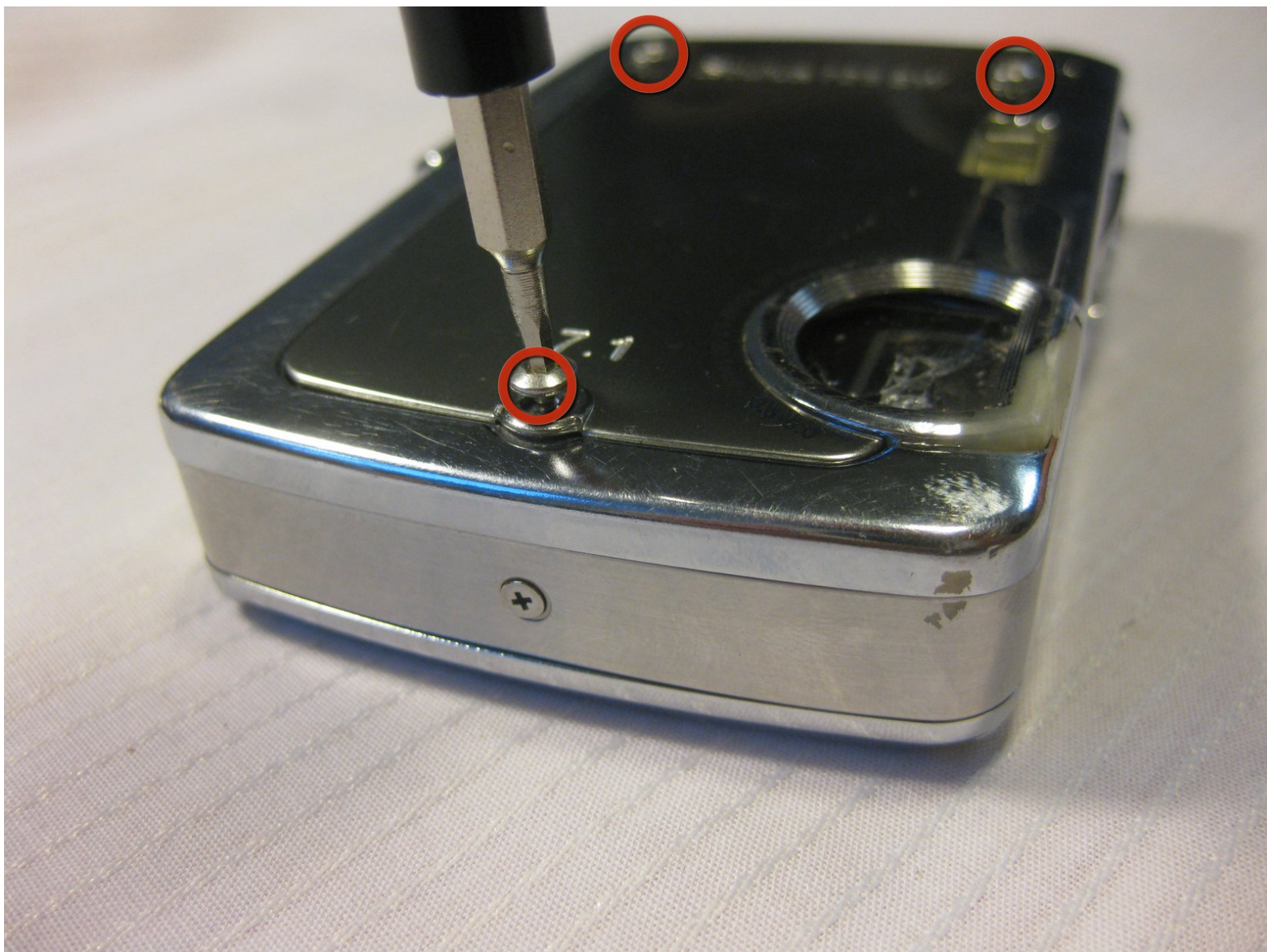




# Disassembling Olympus Stylus 725 SW Front Panel

Use this guide to remove the front panel to...

Written By: Bobby Hodges



---

## INTRODUCTION

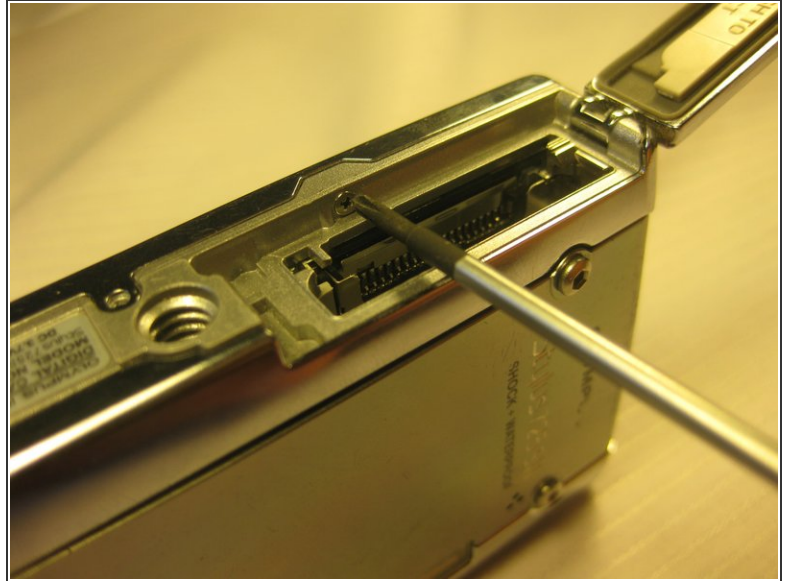
Use this guide to remove the front panel to access the components inside.



### TOOLS:

- [1.5mm Hex Screwdriver](#) (1)
  - [Phillips #00 Screwdriver](#) (1)
-

## Step 1 — Disassembling Olympus Stylus 725 SW Battery



**i** The battery is located on the bottom of the camera.

- Remove the battery by placing your thumb on the bottom flap and sliding the release button away from the side the lens is on. (The screwdriver is simply used as a reference point, no screws need to be removed)
- If the battery is dead, charge it for 60-90 minutes.

**!** When installing a charged battery, align the battery appropriately. The positive signs and negative should line up.



## Step 2 — Front Panel



- Remove the top screws using a 1.5 mm screwdriver.
- Remove the single side screw located on the side of the camera where the tab is, using a #00 screwdriver.

To reassemble your device, follow these instructions in reverse order.