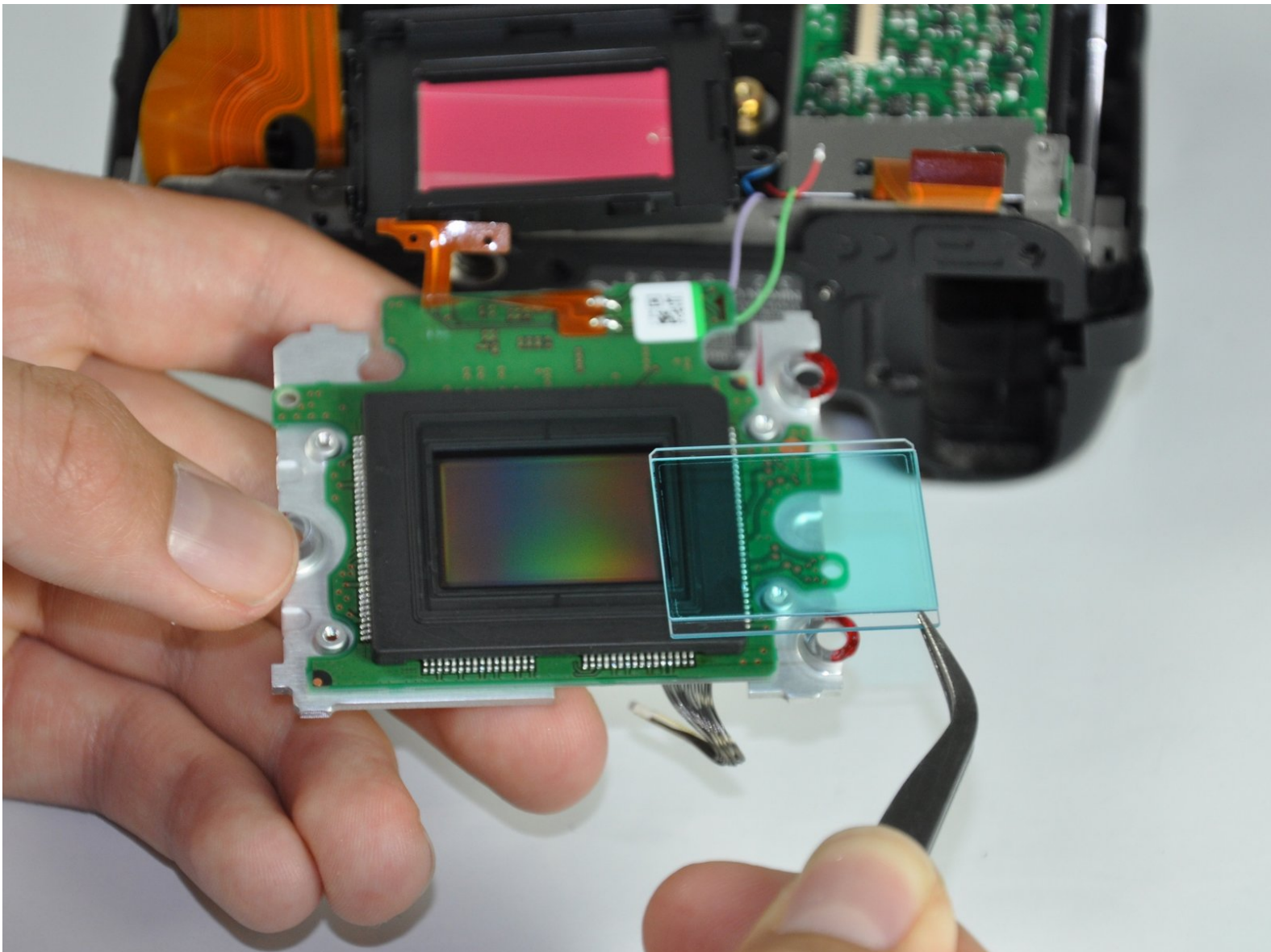




Nikon D5000 Sensor Filter Replacement

Removal of the Nikon D5000 sensor filter for cleaning, replacement, or modification.

Written By: Jacob Rardin



INTRODUCTION

Need to clean out every last speck of dust? Scratched your sensor filter? Swapping out the filter for a custom modification? This guide can help.

TOOLS:

- [Phillips #00 Screwdriver](#) (1)
 - [iFixit Opening Tools](#) (2)
 - [Spudger](#) (1)
 - [Soldering Iron](#) (1)
-

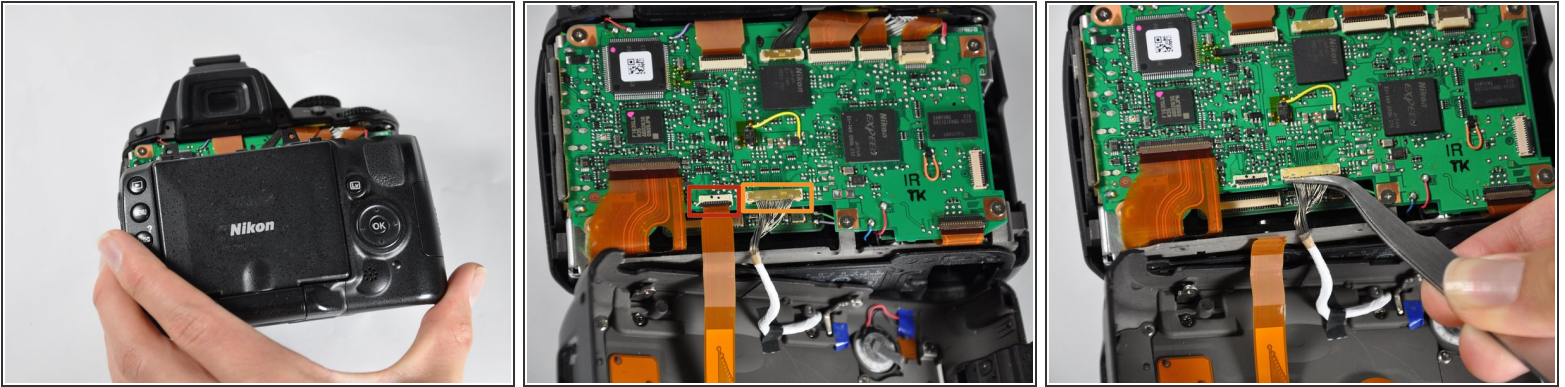
Step 1 — Back Panel



i The battery door has been removed for clarity, but is not necessary. See [this guide](#) for how to remove it.

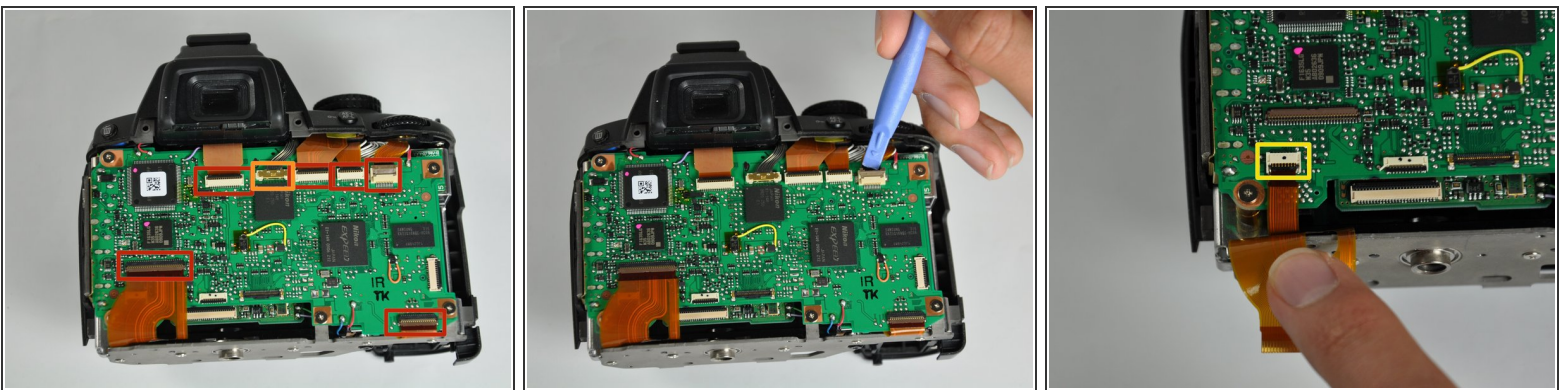
- Unscrew the eight Phillips #00 screws on the back panel:
 - Two 2.5x6mm screws above the screen.
 - One 3x6mm screw on the upper part of **each** side (two total; right side shown).
 - One 3x7.5mm screw on the lower part of **each** side (two total).
 - Two 3x4.5mm screws on the bottom.

Step 2



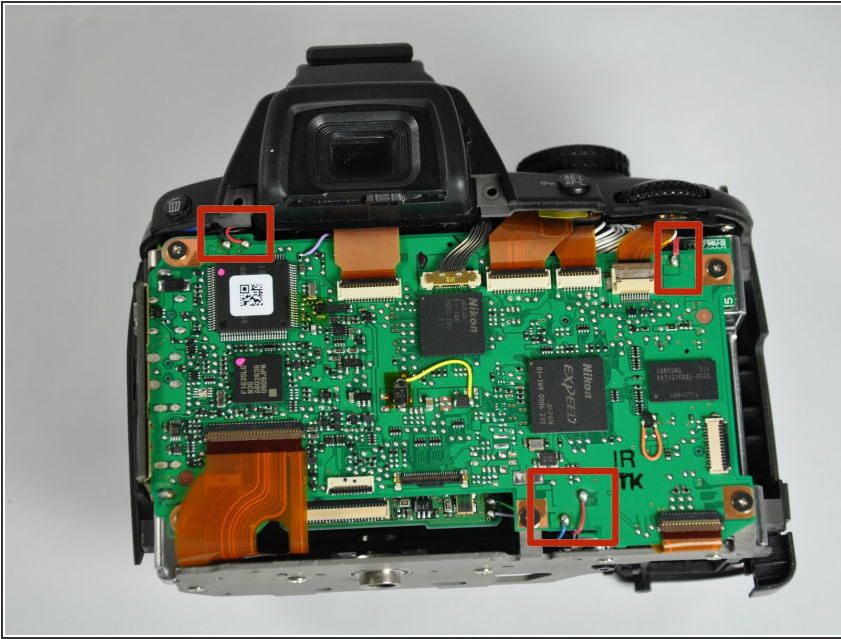
- Pull the back panel up, then tilt it back. There will be two cables still holding it on.
 - ❗ Doing this will also release the connector cover on the left side. Set it aside for now, but remember to reinstall it later.
- Disconnect the ribbon cable by flipping the black tab up, then pulling the cable out.
 - ❗ This procedure also applies to all of the other ribbon cables in the D5000.
- Pull out the other connector by lifting it up with tweezers, or by prying it out. Fingernails also work well.

Step 3 — Sensor Filter



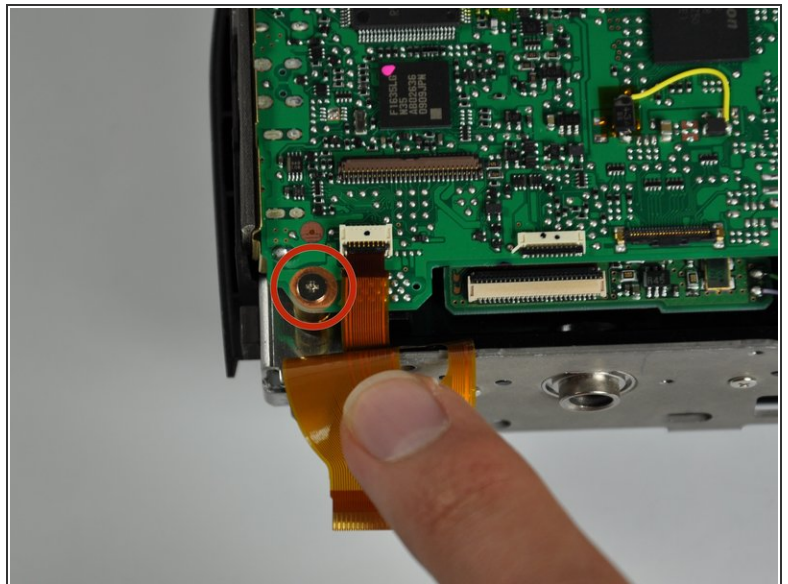
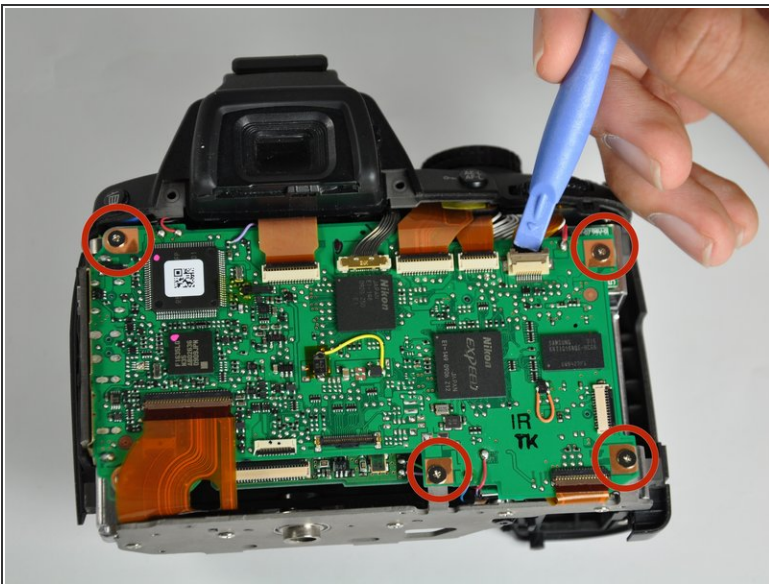
- Disconnect the six ribbon cables by releasing the clips and pulling the cables out.
- Pry off the gold-plated connector with an opening tool, spudger, tweezers, or a fingernail.
- Disconnect a seventh ribbon cable in the lower-right corner.

Step 4



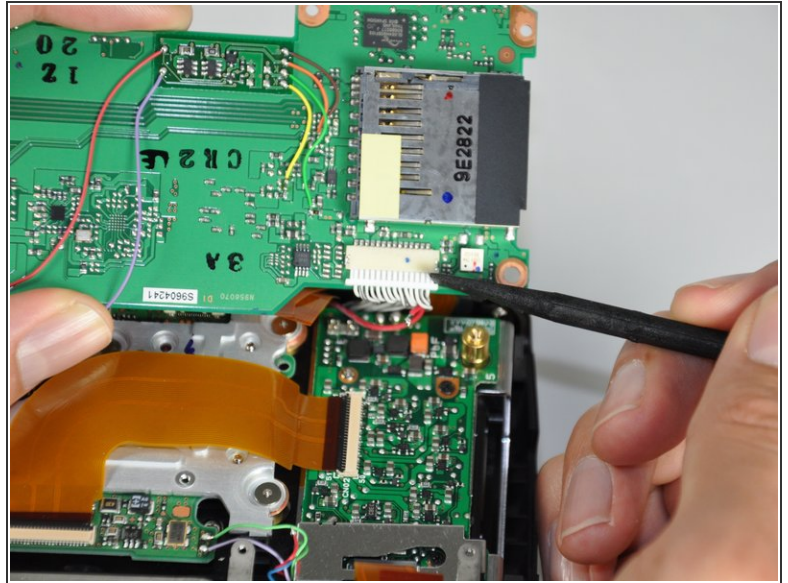
- Desolder the five wires attached to the back of the board.

Step 5



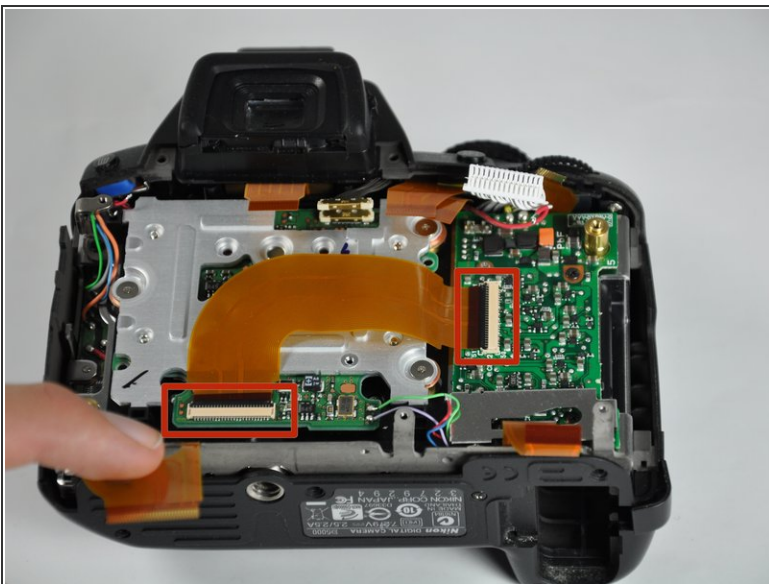
- Remove the five silver Phillips #00 4x4mm screws.
 - ❗ One is hiding under the wide ribbon cable in the lower-right corner.

Step 6



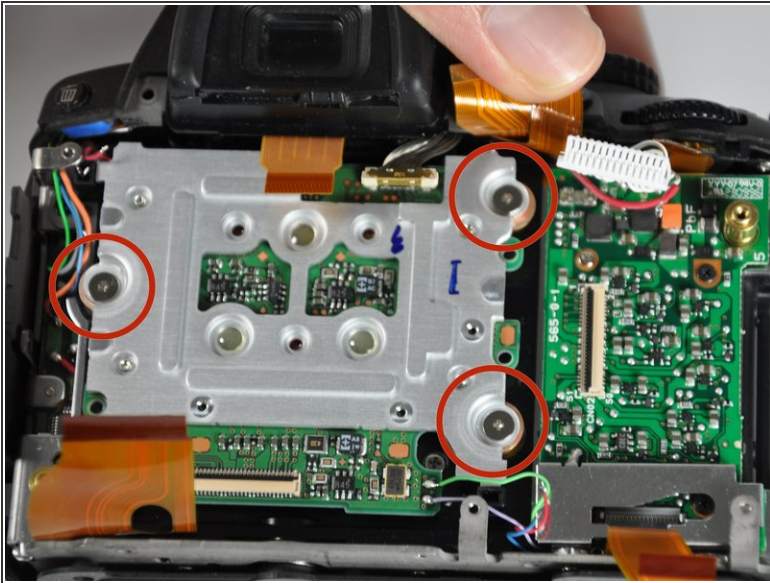
- Flip up the motherboard.
- Remove the white cable connector by pulling it out of its socket with a spudger or fingernails.

Step 7



- Remove the L-shaped ribbon cable from both of its connectors.

Step 8



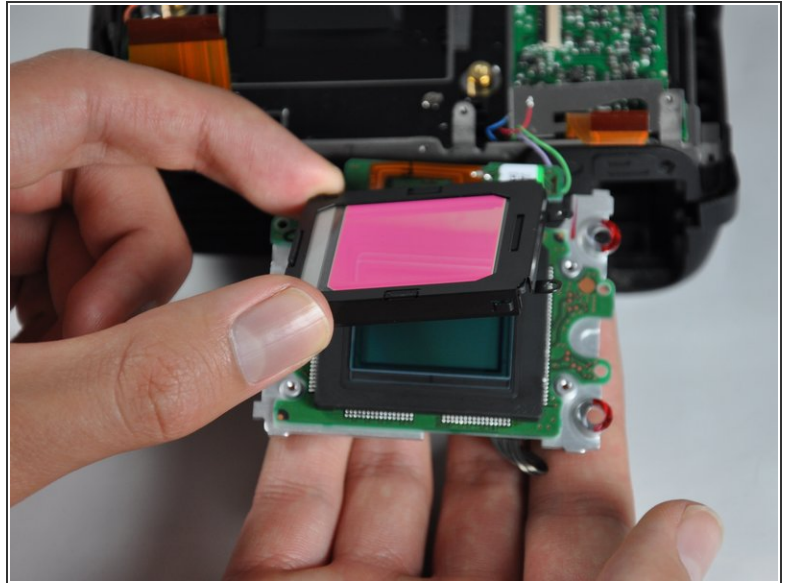
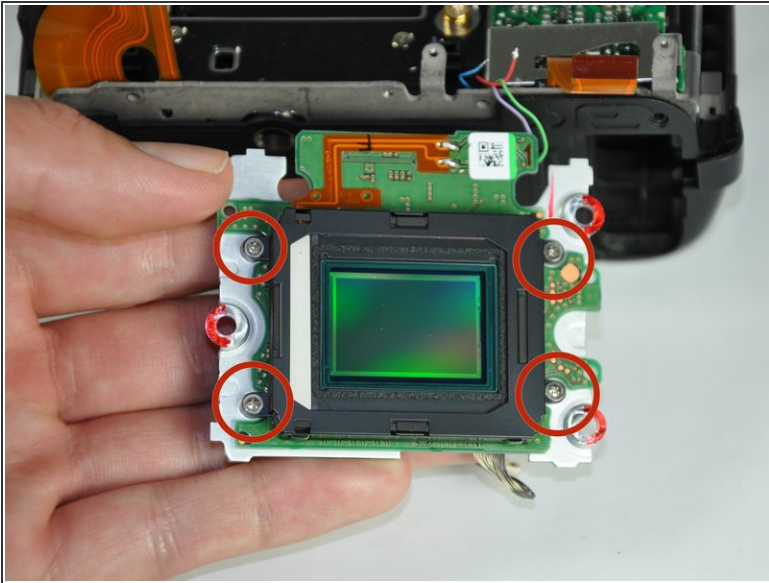
- Remove the three silver 5x5mm screws.

⚠ Between the metal backing plate and the standoffs for each screw is a copper washer. Don't lose them!

- Flip the sensor board out.

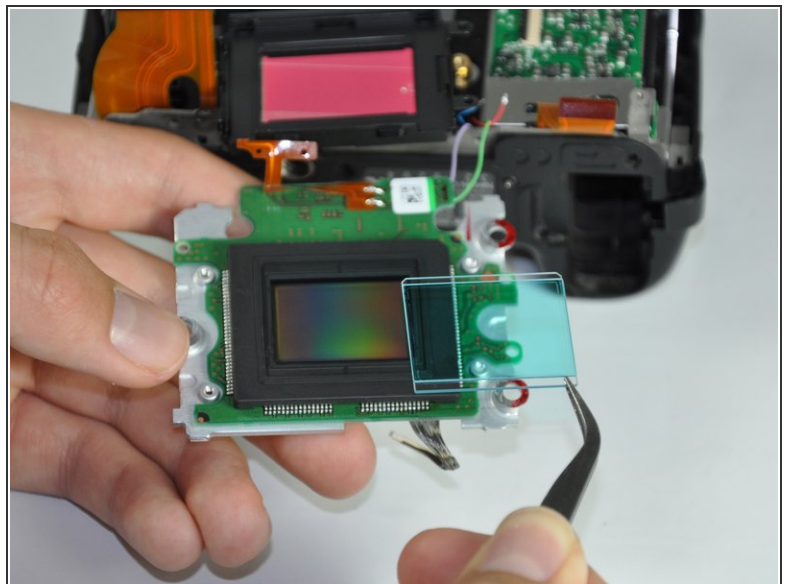
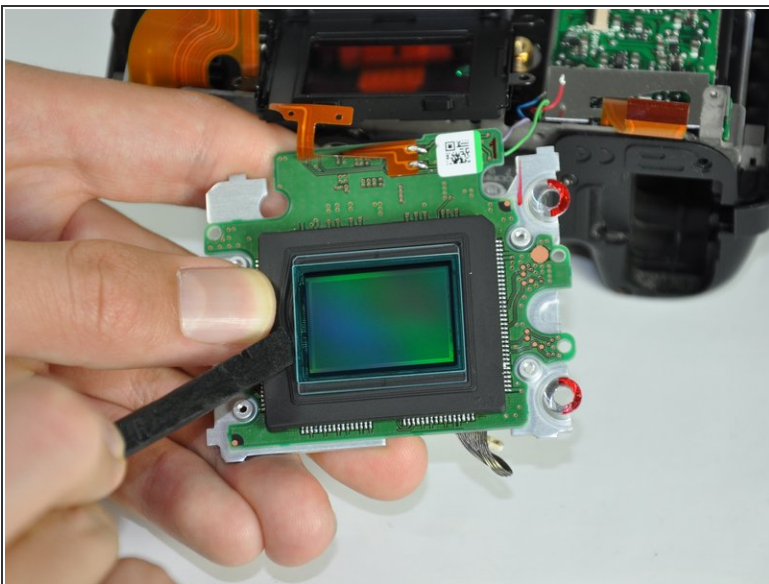
⚠ Be extremely careful from this point on. Dust or scratches on any part of the sensor or its filters can affect picture quality.

Step 9



- Remove the four silver 3.5x3.5mm screws securing the dust cover.
- Pull the cover straight up to remove it.

Step 10



- To remove the sensor filter, pull back the rubber gasket to expose the edge. Use a spudger or opening tool to carefully pry out the filter.

To reassemble your device, follow these instructions in reverse order.