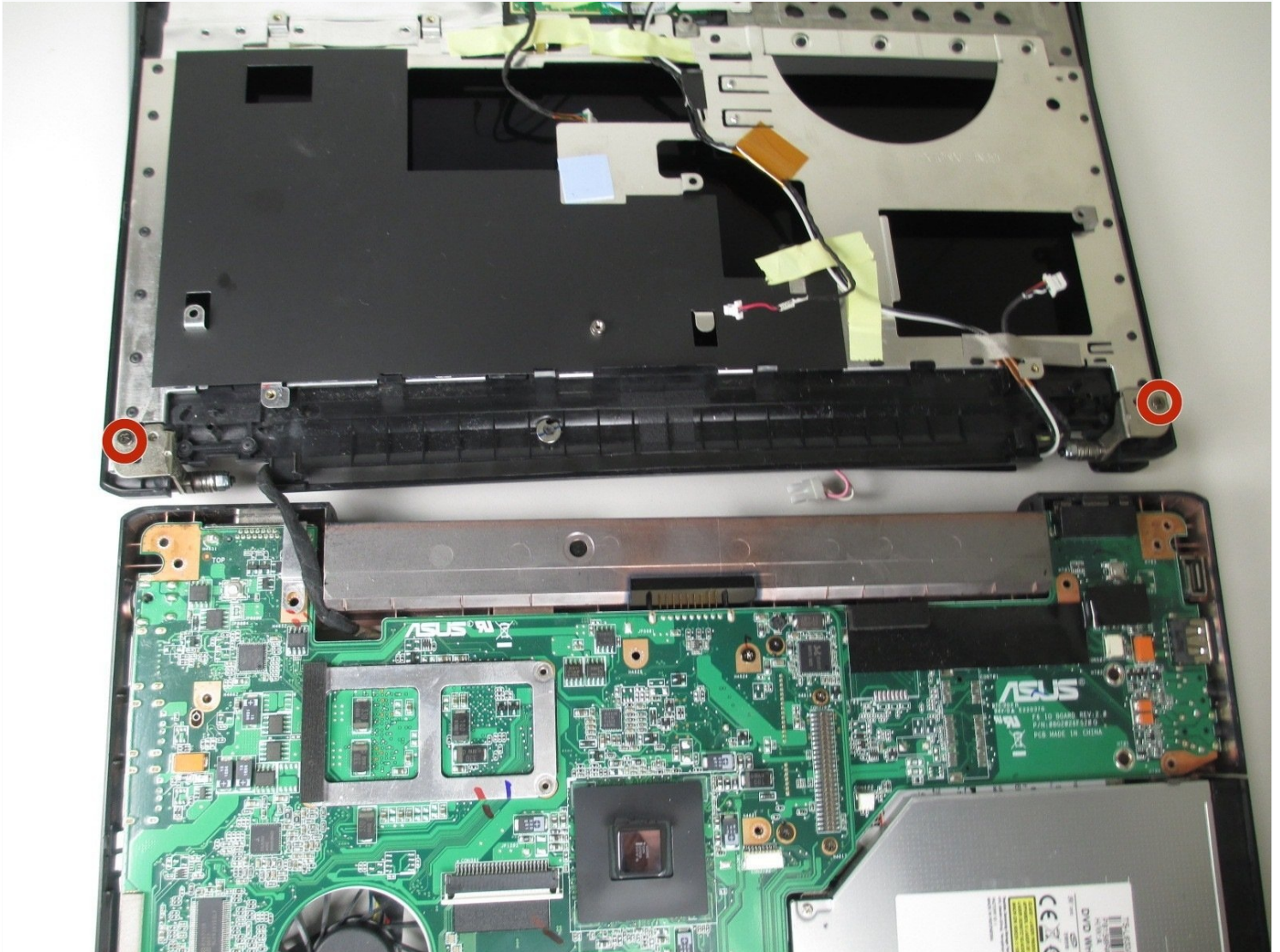




Asus F6A-X2 Hinges Replacement

Hinges on your laptop help support the screen...

Written By: Jonathan



INTRODUCTION

Hinges on your laptop help support the screen when opening and closing the device. If the hinges are too loose, the screen may not stay upright. Be sure to have a hard drive compatible with your laptop when replacing it.


TOOLS:


Tweezers (1)

Phillips #1 Screwdriver (1)

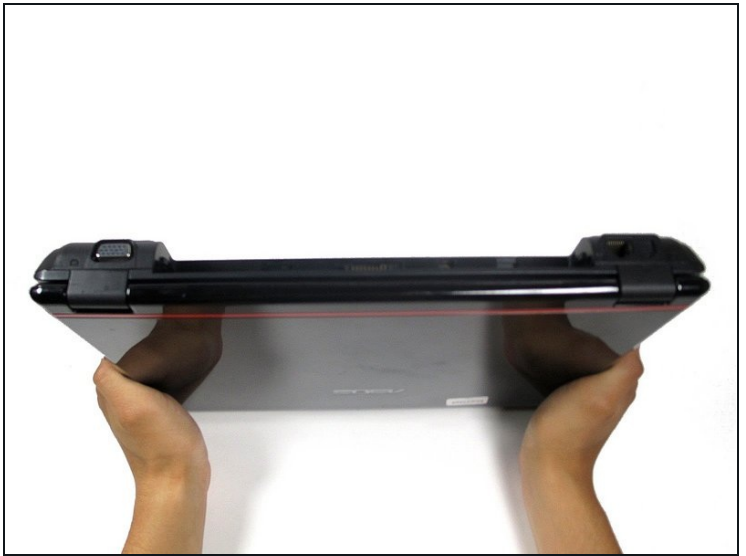
Step 1 — Battery



 Remove any power cords and turn the laptop off. Attempting to replace part of the laptop while power is running through it may cause electrocution or damage to the device.

- Flip laptop face down and rotate so the battery is facing toward you.
-  The battery is not shown in this picture.
- To remove the battery, place one finger on each of the two black slide tabs. Push each tab toward the center of the laptop to release the lock.
- Slide the battery toward you and lift it out of the laptop.

Step 2 — Front Bezel



- Lay the laptop right side up.
- Rotate laptop 90 degrees towards you, so the empty battery compartment is visible.

Step 3



- Insert a finger nail, or the flat end of the spudger, into the slot between the laptop base and the hinge guard on the right side. Gently pull the guard towards you until the guard pops off.
- Repeat this process for the other guard.

Step 4



- Once the hinge guards are removed, lay the laptop flat on its bottom. Then, lift open the laptop screen as if you were about to use it.
- With a pair of [tweezers](#), peel off the six rubber cushions from the bezel located around the perimeter of the screen.

Step 5



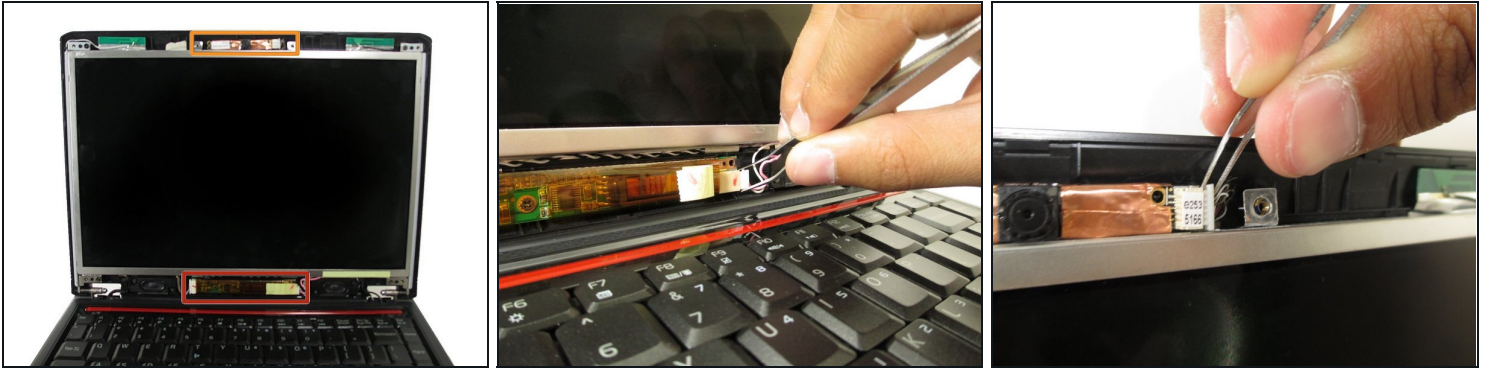
- Remove the six 2.0 mm Phillips #1 screws from the perimeter of the bezel.

Step 6



- Insert a finger nail, or the flat end of a spudger, into the slit between the bezel and the back cover of the laptop.
- Gently pry the bezel towards you to remove it from the back panel of the laptop.
- ① Hearing a cracking noise is normal. The bezel is not damaged in this process.
- Continue to pry around the perimeter of the laptop until the entire bezel has been removed.

Step 7 — Partial Screen



- ① The screen is attached to the webcam at the top and the inverter at the bottom. Disconnecting the screen from these two components will give some slack when removing the screen.
- With a pair of [tweezers](#), grab on to the white connector at the bottom of the screen. Gently, but firmly, pull the connector to the right to remove it.
- Repeat this process with the white connector attached to the webcam above the screen.

Step 8



- Remove the four 2.0 mm Phillips #1 screws at each corner of the laptop screen.
- ★ When reassembling the screen, make sure the 2.0 mm screws go into the holes closest to the center of the laptop.

Step 9



- Close the laptop.
- Open the laptop again. With the screws removed, the screen should remain flat against the keyboard.

Step 10 — Screen for Hinges



- Remove the six 2 mm Phillips #1 screws securing the hinges to the screen. There are three on each side.
- After the screws are removed, close the laptop and flip it over so it is face down.

Step 11 — Back Access Panel



- With the laptop facing down, rotate it so the battery pack is facing away from you.
- Remove the six 1.5 mm Phillips #1 screws on the back panel of the laptop.

Step 12



- Insert a finger into one of the slots on the bottom panel.
- Gently lift the upwards, and the back panel of the laptop will come off easily.

Step 13 — Base



- Remove the following four screws that hold the base to the motherboard:
 - One 1.5 mm Phillips #1 screw located near the center of the laptop.
 - One 1.5 mm Phillips #1 screw located at the top, center, next to the metal guard.
 - ⓘ This screw is concealed by a black wire running across the top of the laptop. You will have to move the wire to the right in order to remove the screw.
 - Two 1.5 mm Phillips #1 screws located next to the fan.

Step 14



- Next, remove the white and black cables located on the graphics card with a pair of [tweezers](#). Grab onto the gold node on each wire and gently pull up, and the node will pop out of its socket.

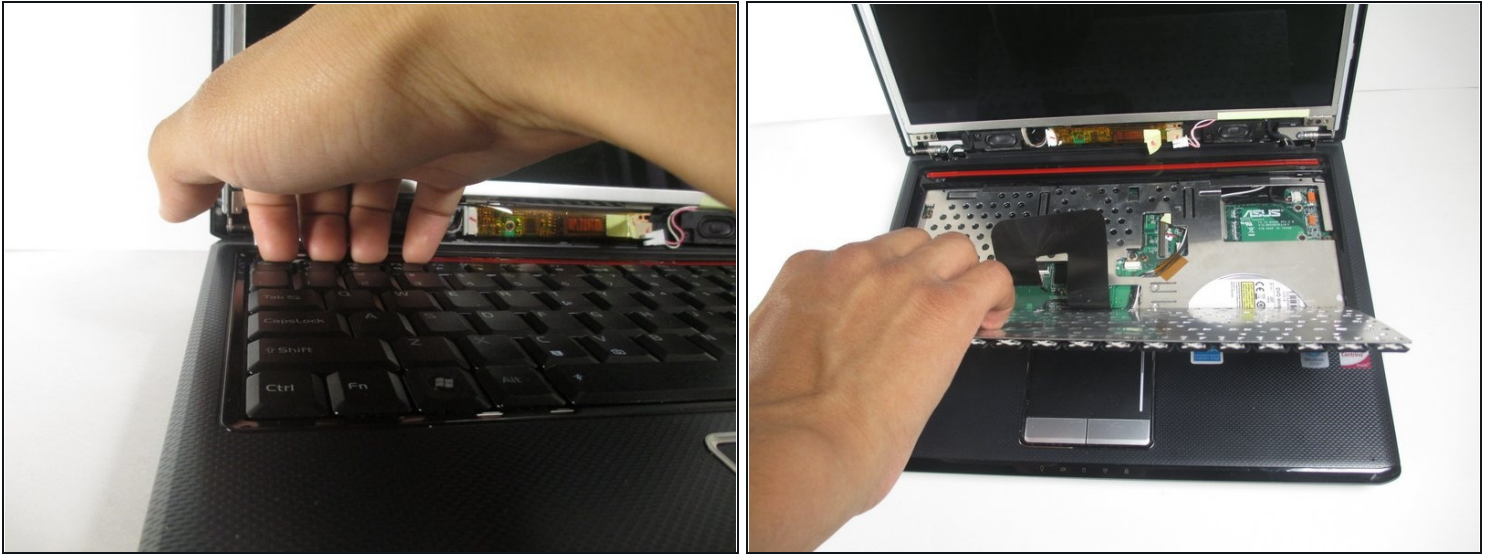
- ① This will give slack when disassembling the base from the motherboard.
- ★ Remember that the black wire goes to 1 and the white wire goes to 2 on the graphics card.
- ★ There is a hole on the motherboard the black and white wire will need to pass through when reassembling your laptop.

Step 15



- Remove the eleven 1.5 mm Phillips #1 screws around the perimeter of the laptop.
- ① There are two screws inside the big circles in the top corners of the laptop.

Step 16

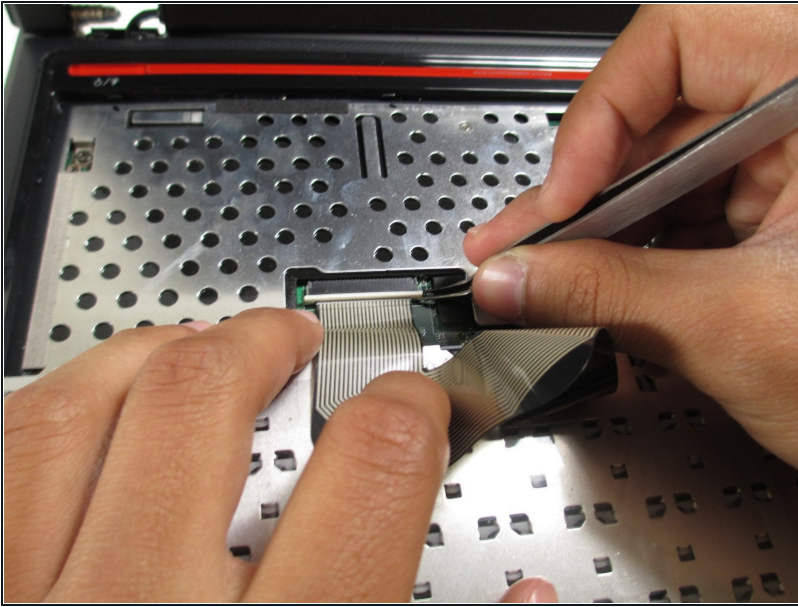


- Flip the laptop right side up and open to reveal the keyboard.

⚠ In this step you will be removing the keyboard. Be gentle when removing it as the keyboard is connected to the laptop by a thin black ribbon. Yanking the keyboard out too quickly can damage the ribbon.

- Insert a finger or the flat end of a spudger into the top left edge of the keyboard, underneath the 'Esc' and the 'F1-F2' keys.
- Gently pull the keyboard towards you and lay it flat. It will make a slight popping noise as it disconnects from the laptop.

Step 17



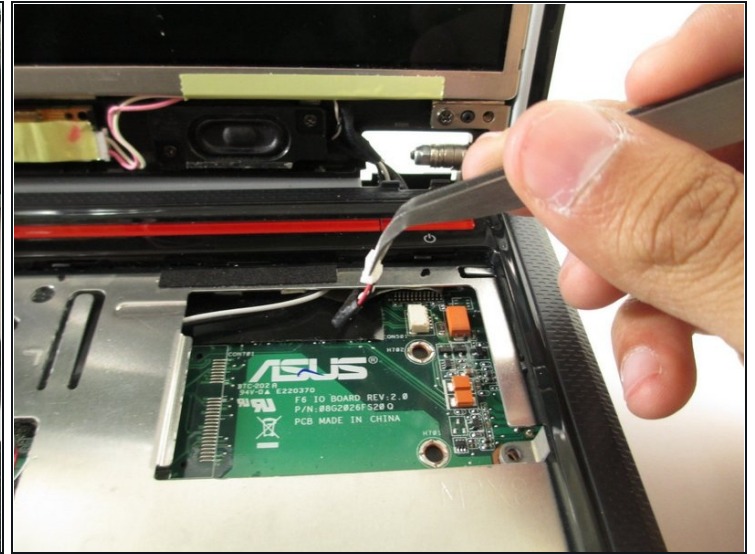
- To remove the keyboard completely, you will need to detach the ribbon from the laptop.
- With a pair of tweezers, gently pull on each side of the white tab until it is freed from the computer.
- ① Once the ribbon has been freed, put the keyboard aside in a safe place to avoid damaging it.

Step 18



- Remove the three 1.5 mm Phillips #1 screws from the metal guard of the laptop.
- ☑ When reassembling, remember the screw on the extreme right of the laptop is longer than the other two.

Step 19



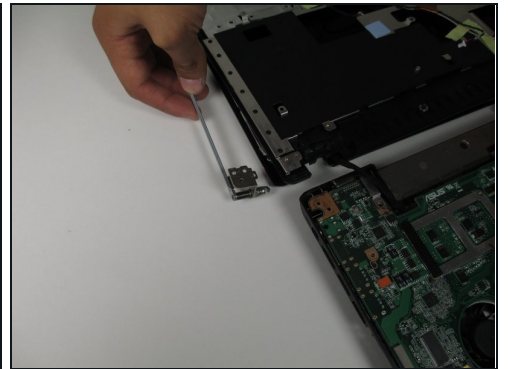
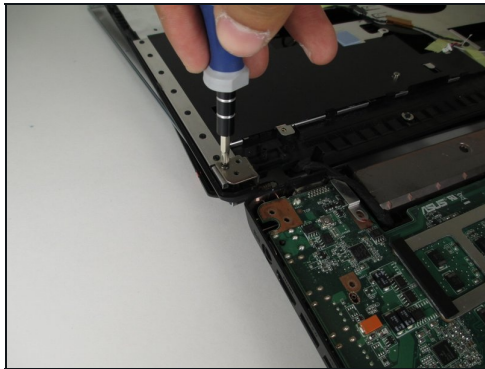
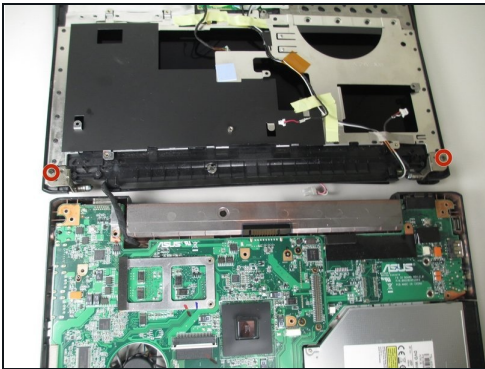
- With a pair of tweezers, remove the three white connectors attached to the motherboard. This will give slack when disassembling the base.
- The connectors at the top right and middle of the laptop will need to be pulled to the left.
- The connector in between the two will need to be pulled towards the back of the laptop.

Step 20



- Insert the flat end of a spudger into the thin crack running along the side of the laptop. Gently pry open along the perimeter of the laptop to remove the base.
- After completely prying the two bases from each other, set the top base flat against the back panel, revealing the circuit board.

Step 21 — Hinges



- Remove the two 2.0 mm Phillips #1 screw on each hinge.
 - Pull the hinges away from the laptop to remove them.
- ⓘ The hinges will be labelled individually with the left one having an "L" and the right one having an "R".

To reassemble your device, follow these instructions in reverse order.