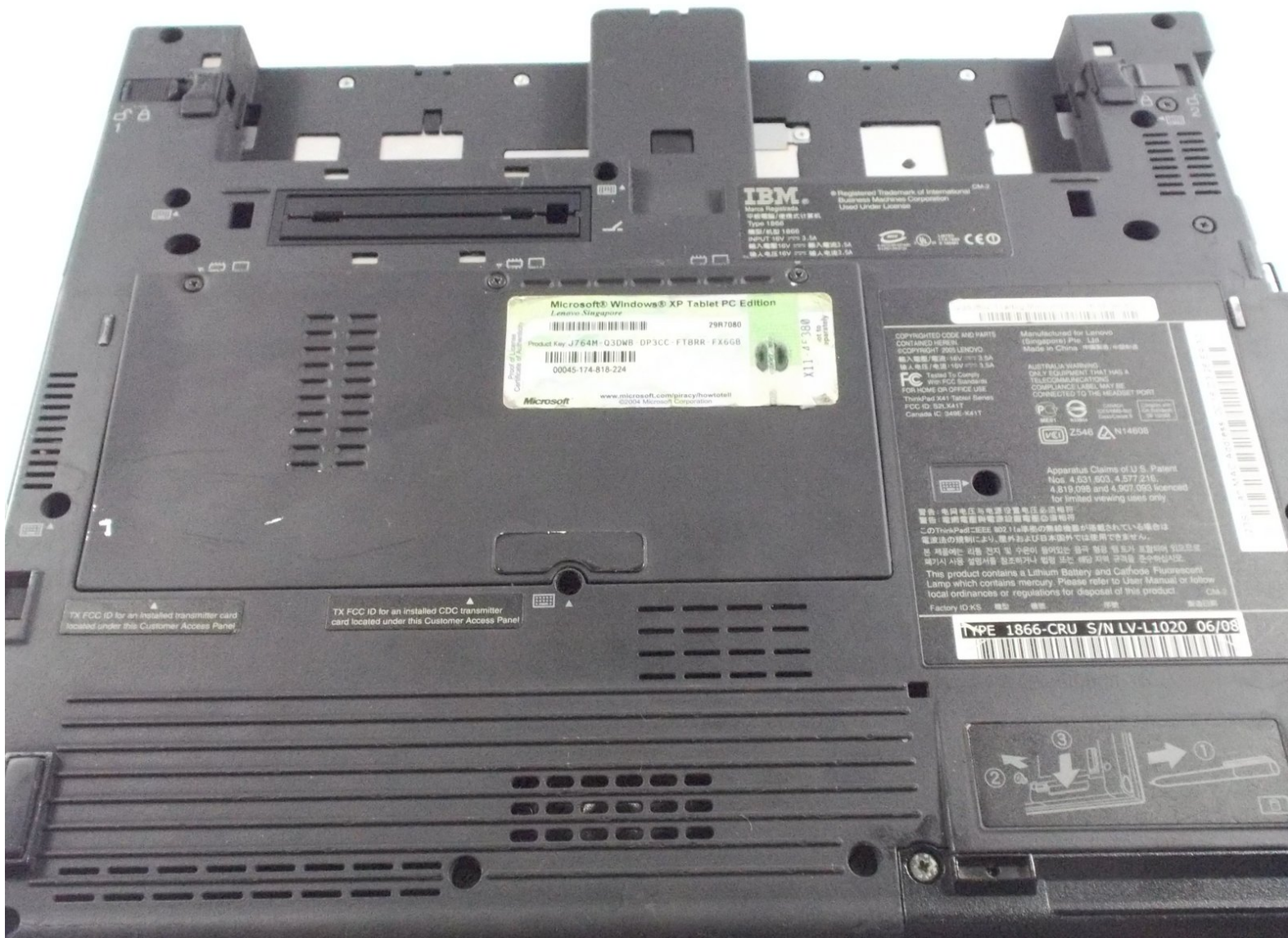




# IBM Thinkpad x41t Laptop Wifi Card Replacement

This will give the steps necessary towards replacing the wifi card on a thinkpad x41t.

Written By: Dustin



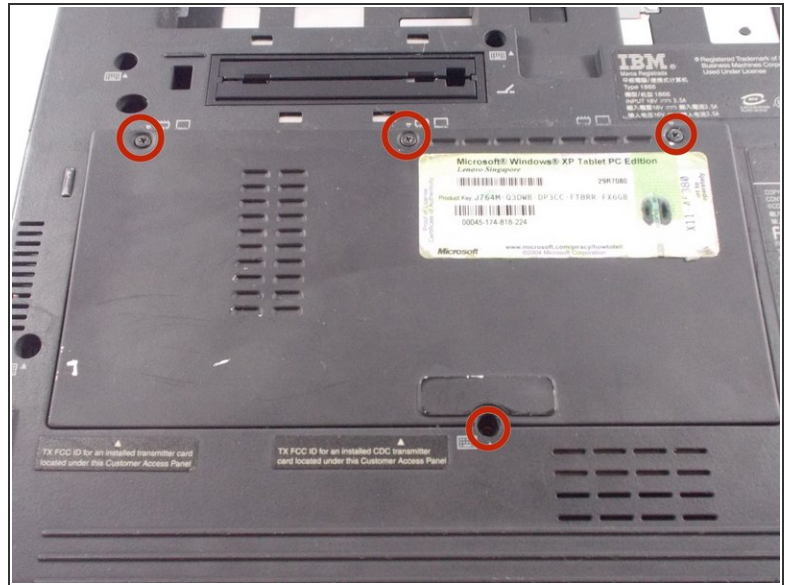
**TOOLS:**

- [Phillips #00 Screwdriver](#) (1)

**PARTS:**

- [Replacement wifi card](#) (1)

## Step 1 — Wifi Card



- Flip the laptop over and remove the battery
- Remove all highlighted screws with a Phillips head screwdriver

## Step 2



- Gently unconnect the grey and black wires



## Step 3



- Lift the wireless card and pull it out of the motherboard
- Replace the wifi card and retrace your steps to reassemble the laptop

To reassemble your device, follow these instructions in reverse order.