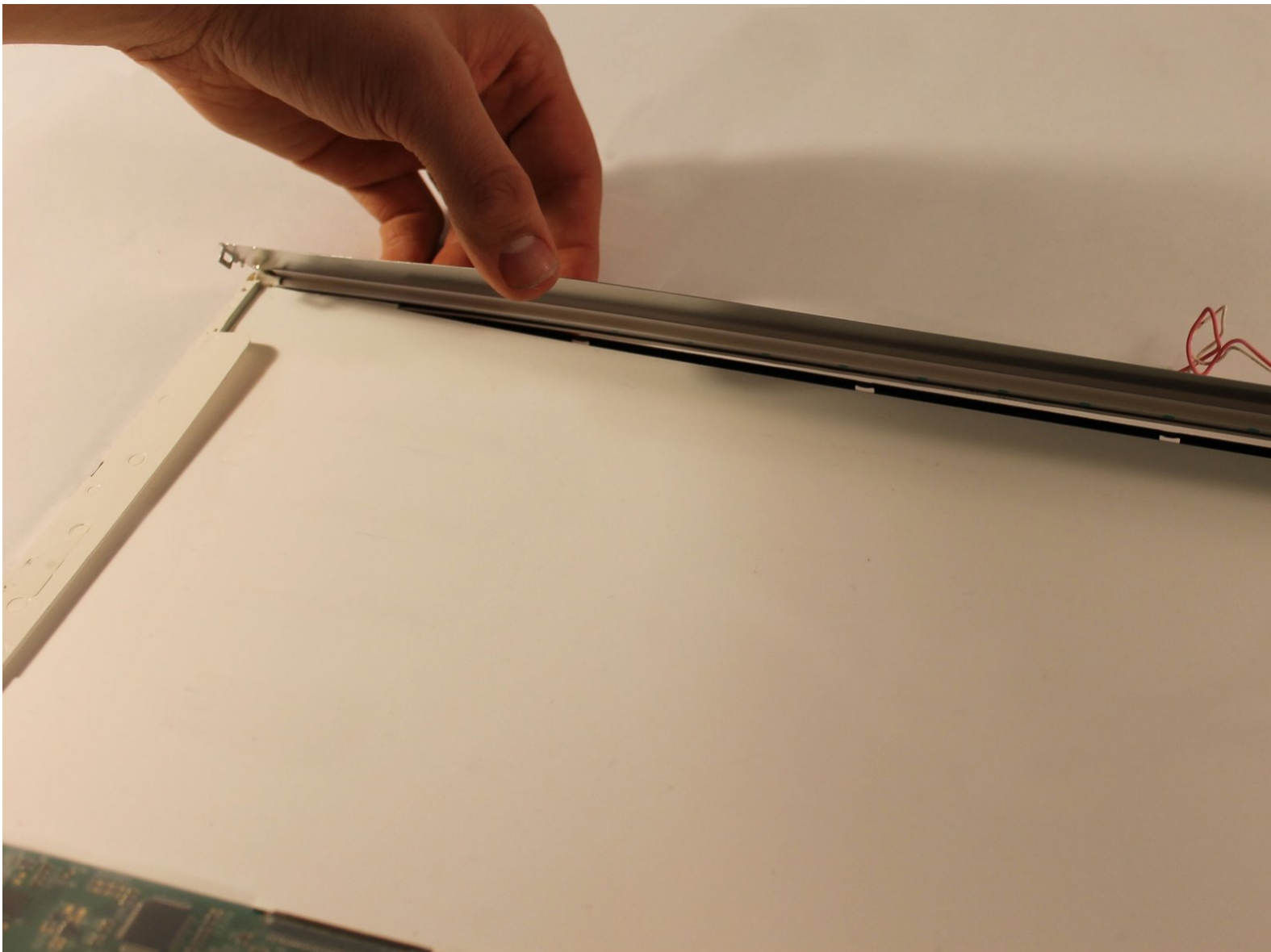




Toshiba Satellite L305-S5875 CCFL Tube Replacement

This guide will help show you how to replace a CCFL tube that is no longer functioning for the Toshiba Satellite L305-S5875 model laptop.

Written By: Tyler



INTRODUCTION

Welcome to the Toshiba Satellite L305-S5875 CCFL Tube Replacement guide page. This guide uses both visual and written instructions in a step by step manner to help you replace the damaged CCFL tube in your screen with a brand new one.



TOOLS:

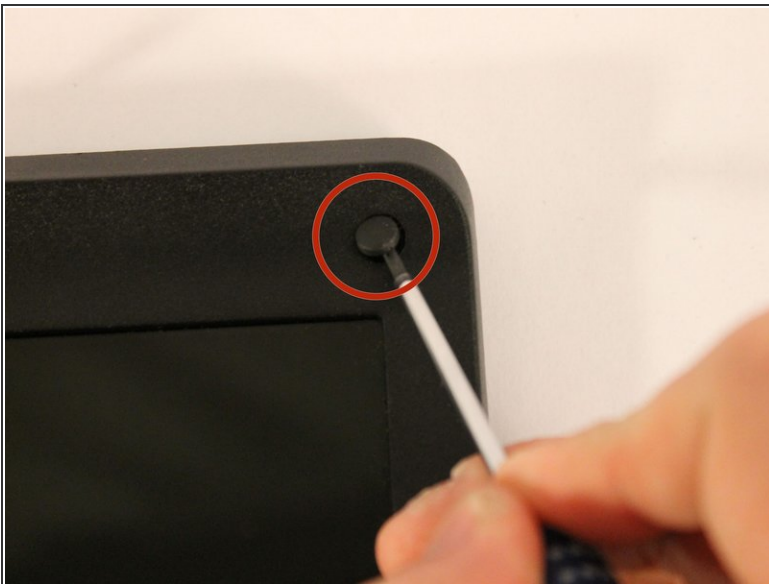
- [2.5 mm Flathead Screwdriver](#) (1)
 - [Phillips #0 Screwdriver](#) (1)
 - [iFixit Opening Tools](#) (1)
-

Step 1 — LCD Screen



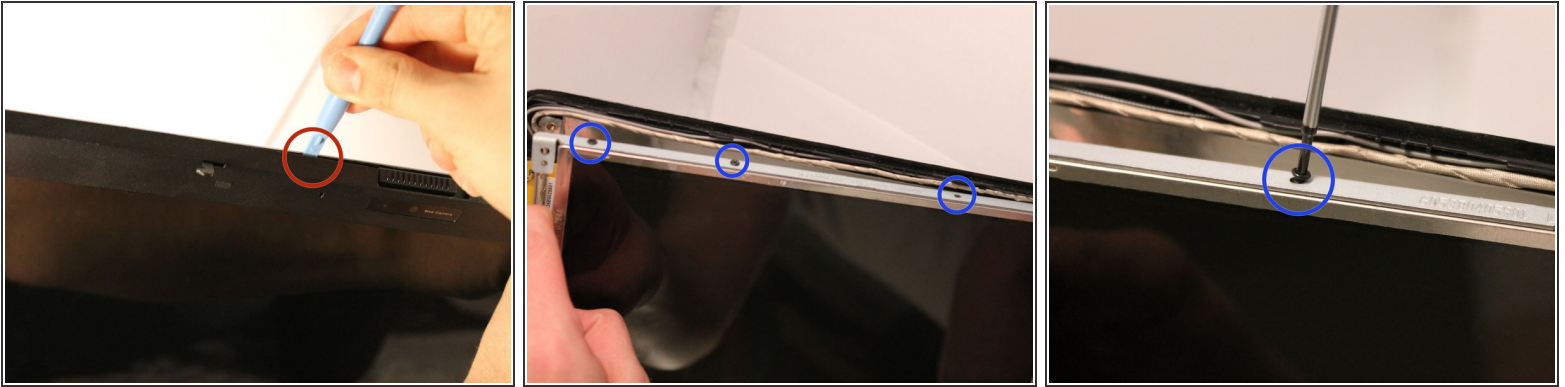
- Open the laptop so that you can see the screen.

Step 2



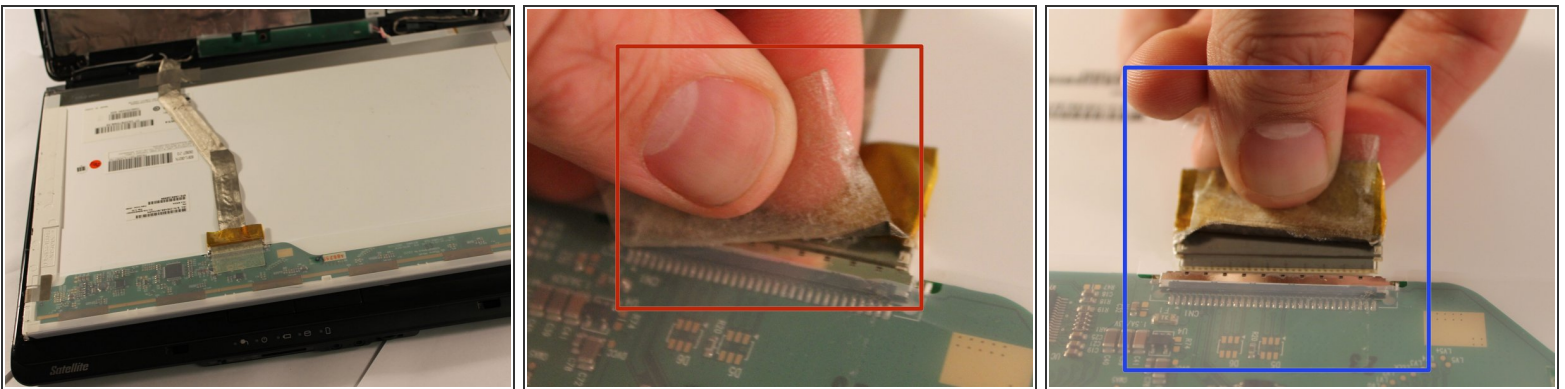
- Remove the four rubber inserts from the four corners of the screen.
- Once removed, unscrew and remove the four screws found beneath the four rubber inserts.

Step 3



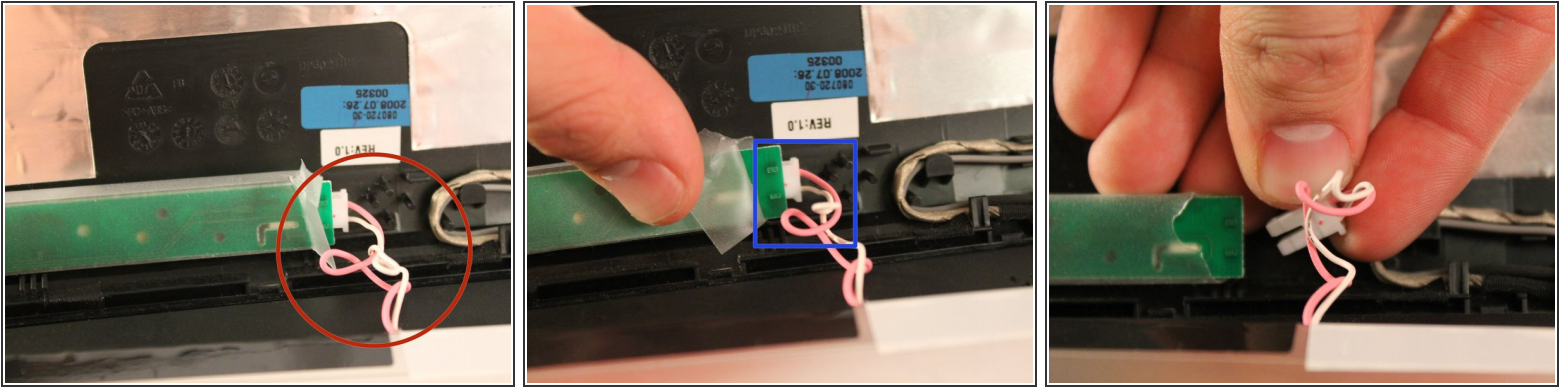
- Use the plastic opening tool to separate the front panel of the laptop from the back panel, pulling the front panel off the laptop.
 - Gently pull the back panel approximately 1 inch away from the screen.
- ⚠ Warning: Following step will detach screen from casing. Use caution.
- *Unscrew and remove the 4 screws on the left and right side of the screen; 8 screws in total.*

Step 4



- Lay screen down on keyboard.
- On the back of the screen, locate the ribbon cable that connects the screen to the computer. Remove the tape from the cable if it is present.
- Carefully remove the ribbon cable by pulling it out of it's socket.

Step 5



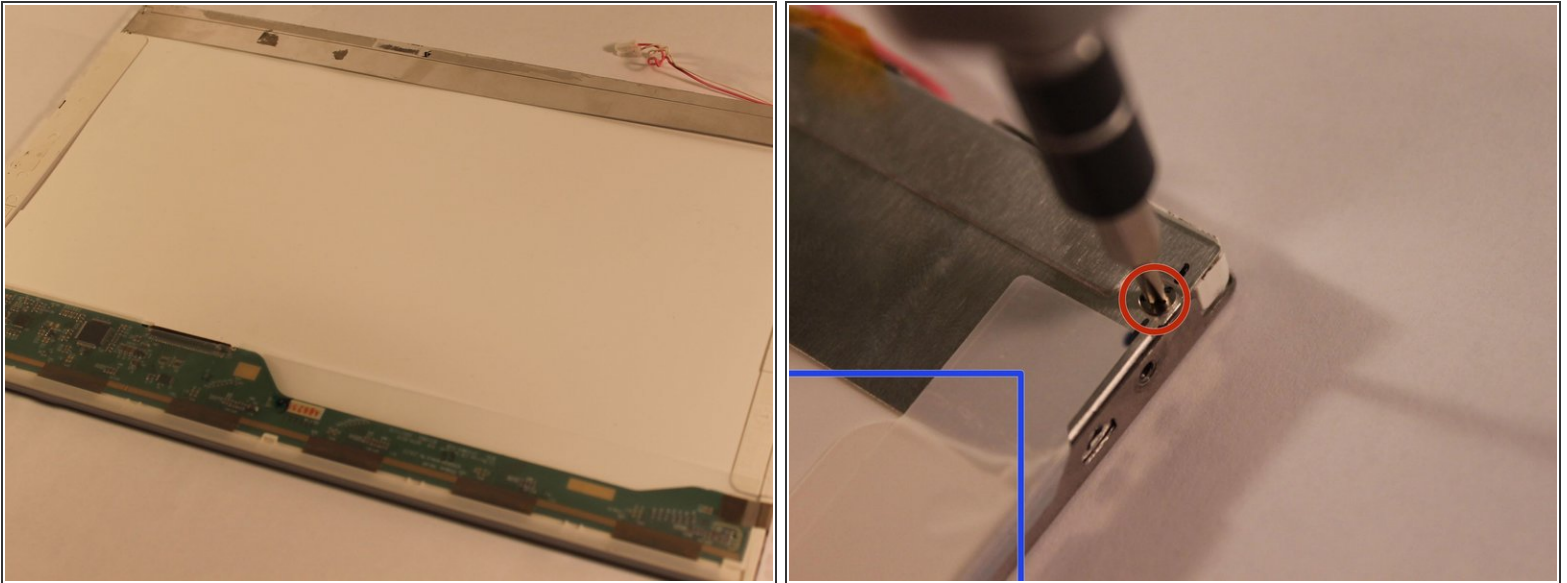
- At the bottom of the screen, locate the pink and white wires.
- Unplug the connector from the circuit board by gently pulling it out.

Step 6



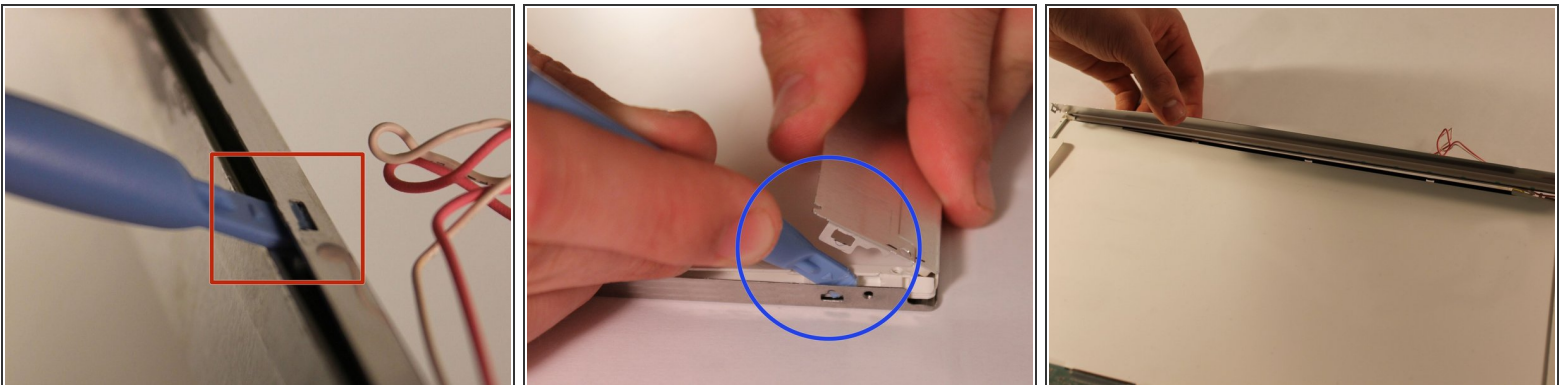
- Congratulations, you have just removed your screen!

Step 7 — CCFL Tube



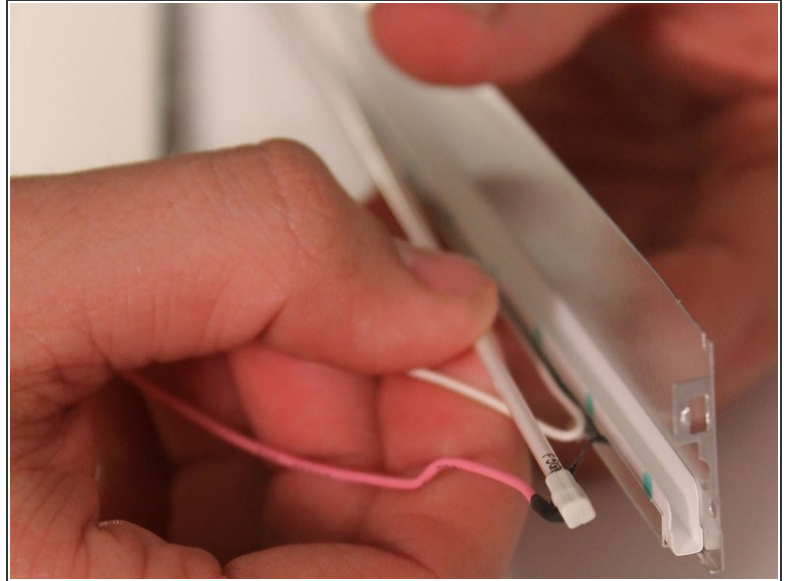
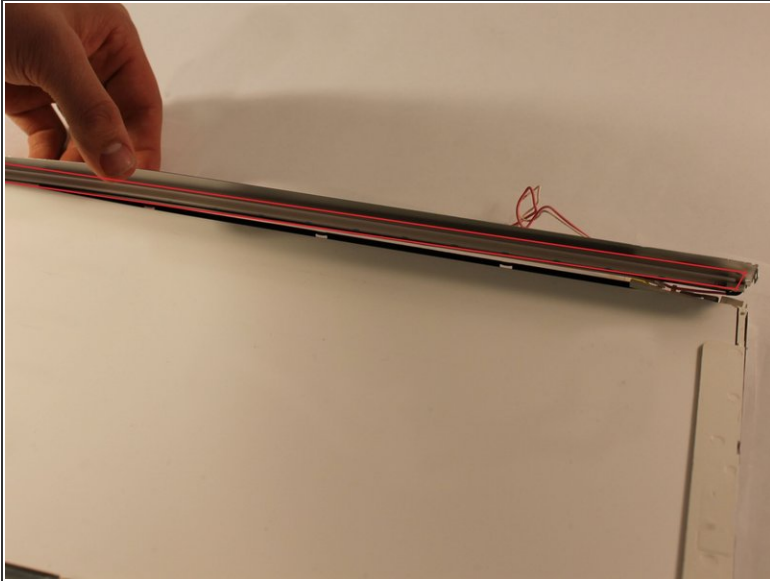
- With the screen now removed from the computer, remove the two screws from the screen's metal enclosure.
- In addition to removing the screws, remove the tape on the edge of the screen.

Step 8



- Using a plastic opening tool, unhook the latches on the side of the screen's metal enclosure.
- Once all of the latches are unhooked, gently pull the metal case up to expose the CCFL tube.

Step 9



- With the bad CCFL tube now accessible, very carefully remove it from the screen housing.
- With the spent CCFL tube now removed, replace it with the new replacement tube in the appropriate slot.

 **Note: Make sure you do not break the CCFL tube, as the contents within the tube are toxic to humans.**

To reassemble your device, follow these instructions in reverse order.