



# Motorola W315 Antenna Replacement

This guide shows how to replace the antenna of the Motorola W315.

Written By: Justin Scott





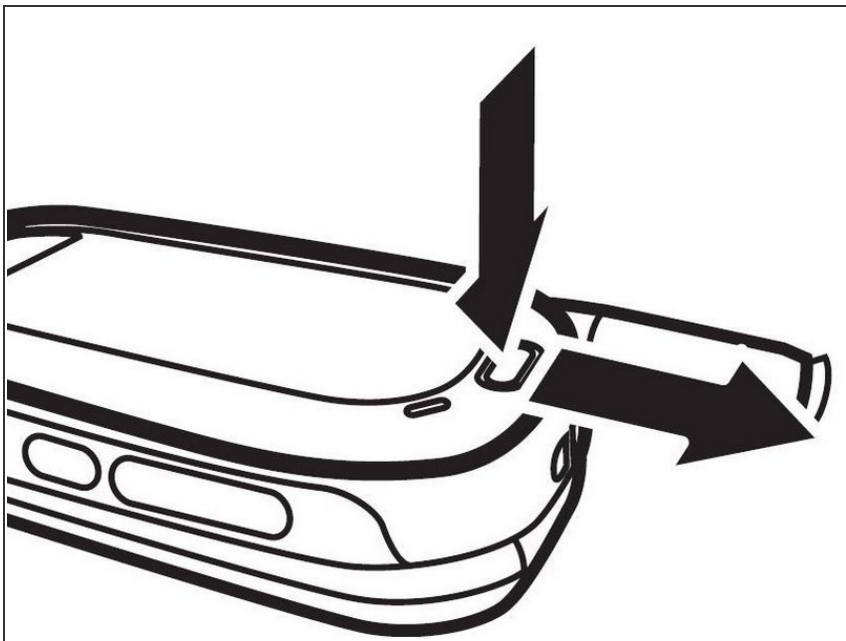


## TOOLS:

- [T6 Torx Screwdriver](#) (1)
  - [iFixit Opening Tools](#) (1)
-



## Step 1 — Battery



- Turn off the phone.
- Turn the device over.
- Remove the battery cover.

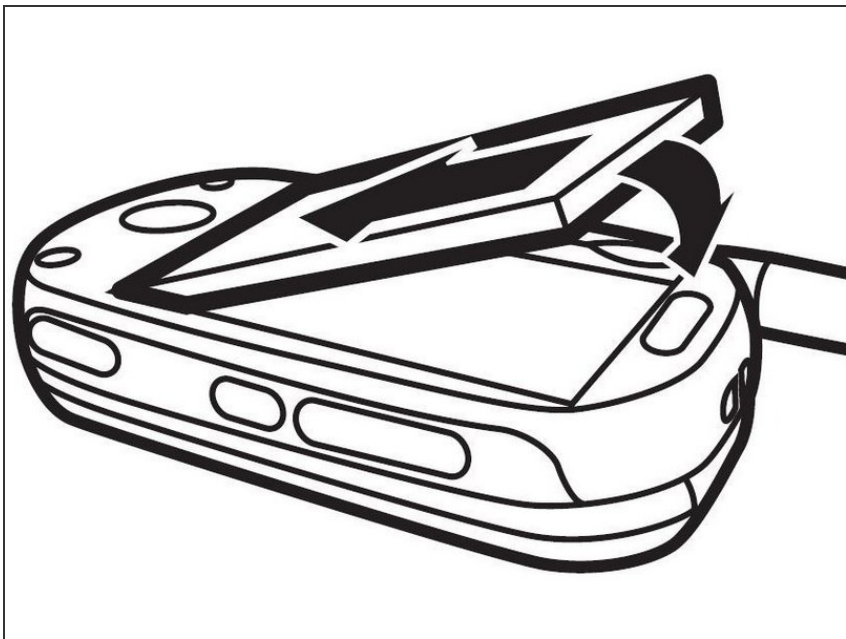
## Step 2



- Insert thumb in the gap between the button and the battery and pry the battery upwards.
- Pull the battery out of the phone.



### Step 3



- Insert the new battery.

### Step 4 — Rear Case



- Four 5 mm screws are visible (circled in red).
- Using the T6 tool, remove all four 5mm screws and set them aside.



## Step 5



- Insert the plastic opening tool between the front and back panels of the lower half of the device.
- Slide the tool around the entire frame of the device until it has loosened.
- Remove the back of the device.

## Step 6 — Antenna



- Gently twist the antenna in a counter-clockwise direction to unscrew it.

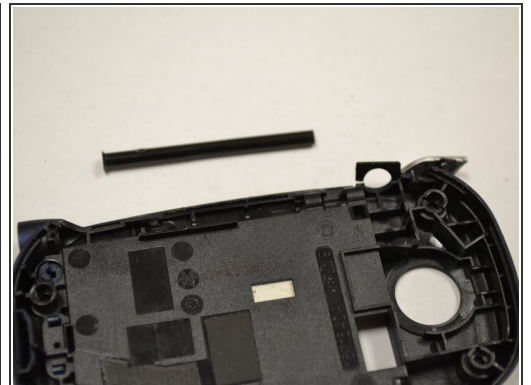
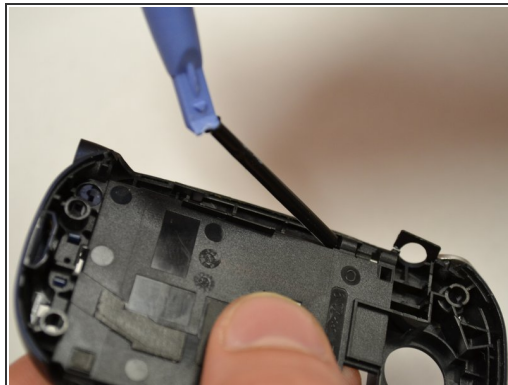


## Step 7



- Pull the antenna out through the hole in the top of the frame and set it aside.

## Step 8



- Using a plastic opening tool, lift and remove the antenna casing.

To reassemble your device, follow these instructions in reverse order.

Information on recycling/disposing of your electronic waste is located under Additional Information on the device page.