



# Samsung Galaxy S II T989 Front Camera Replacement

The front facing camera is smaller than the...

Written By: Joshua King



# INTRODUCTION

The front facing camera is smaller than the rear camera. This small camera is held in place by plastic bar attached to the case by a screw.

## TOOLS:

Phillips #0 Screwdriver (1)

iFixit Opening Picks (Set of 6) (1)

## Step 1 — Rear Cover



- To remove the rear cover, locate the tab indicated by the red outline.
- Using your fingernail, gently pry the rear cover.

## Step 2 — Battery



⚠ Turn off the phone before removing battery.

- The battery can be removed from the phone by applying an upwards pressure to the bottom right edge of the battery, as indicated by the red rectangle.
- After the battery starts to lift upwards, use your hand to hold and remove it.

## Step 3 — SIM Card



- The SIM card is the small white rectangle located in the red rectangle.
- To remove the SIM card, press down on the card and slide it to the left, until it no longer is in contact with the metal.



## Step 4 — Media Card



- The media card is found inside the area indicated with the red rectangle. The card itself is small and black making it hard to easily see.
- After locating the card, gently use your fingers to slide the card to the right, until the card is no longer in contact with the metal.

## Step 5 — Inner Plate



- The inner plate is held on by six screws that are 1/16 of an inch (1.6 mm).
- Remove the screws with a Philips head precision screwdriver.
- Place all screws someplace that they will not easily be lost, such as a [magnetic mat](#) or a plastic bag.

## Step 6



⚠ When removing the inner plate, place device on grounded surface or use anti static wrist band.

- After the screws have been removed, the only thing holding the inner plate in is several plastic tabs built into the frame of the phone.
- Firmly pinch the edge, as shown in the picture, and pull the plate away from the frame.
- If you cannot get a grip on the inner plate, consider using the spudger to pry and lift the plate out.

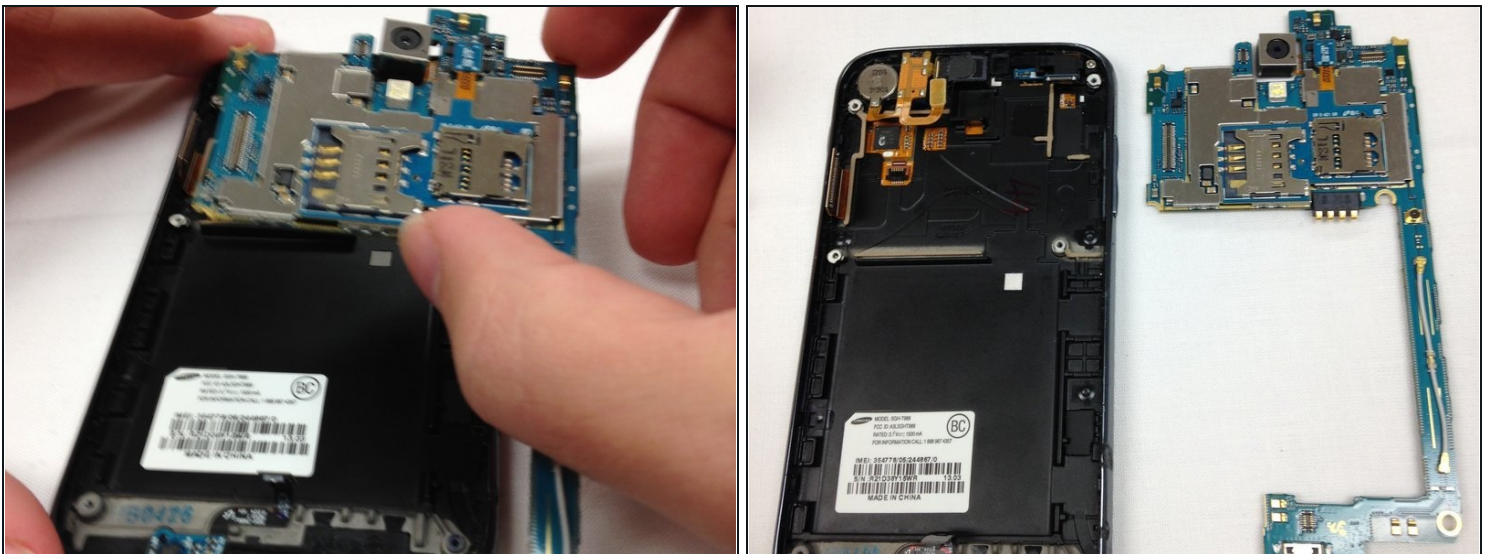
## Step 7 — Motherboard



⚠ The motherboard holds many delicate components, improper handling can result in the destruction of these components.

- To remove the motherboard, first undo the three tabs, indicated by the red outlines, using either a small flat-head screwdriver or your thumbnail.
- In addition to the three at the top of the motherboard, there is a fourth tab at the bottom of the phone that will need to be opened as well.

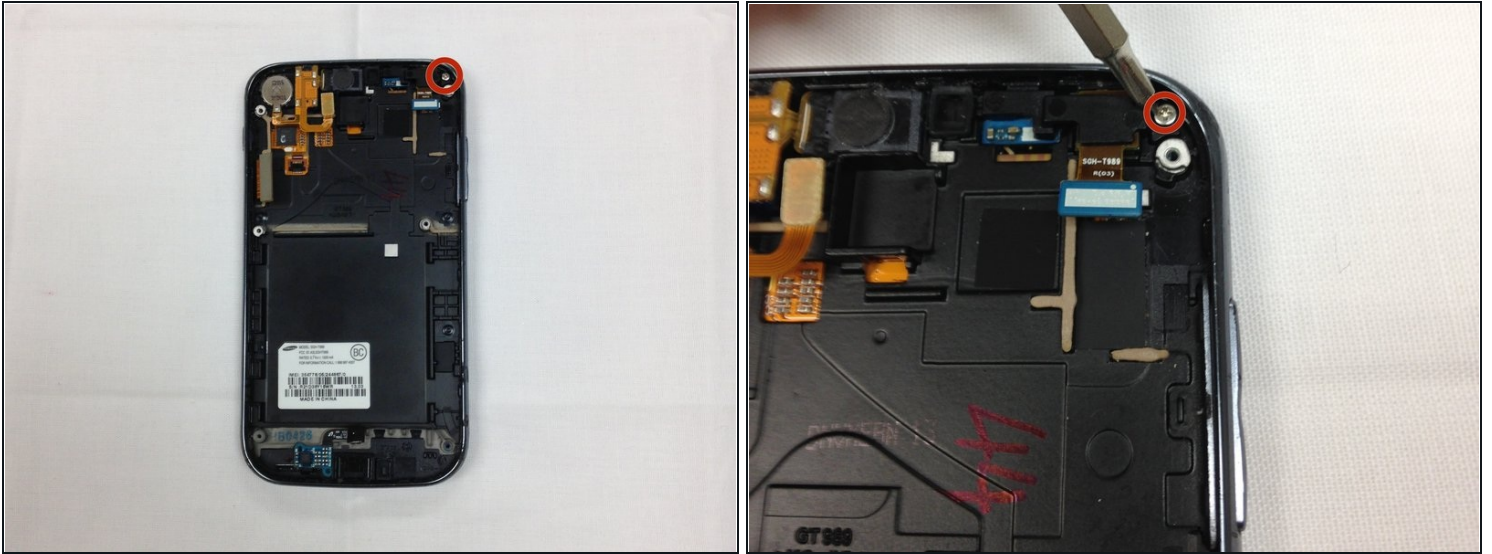
## Step 8



- After all the tabs are unplugged, carefully apply pressure to the edges of the motherboard and lift upwards.
- If the motherboard does not lift up, you may need to wiggle it left and right to free the corners from the areas where the case screws were placed.

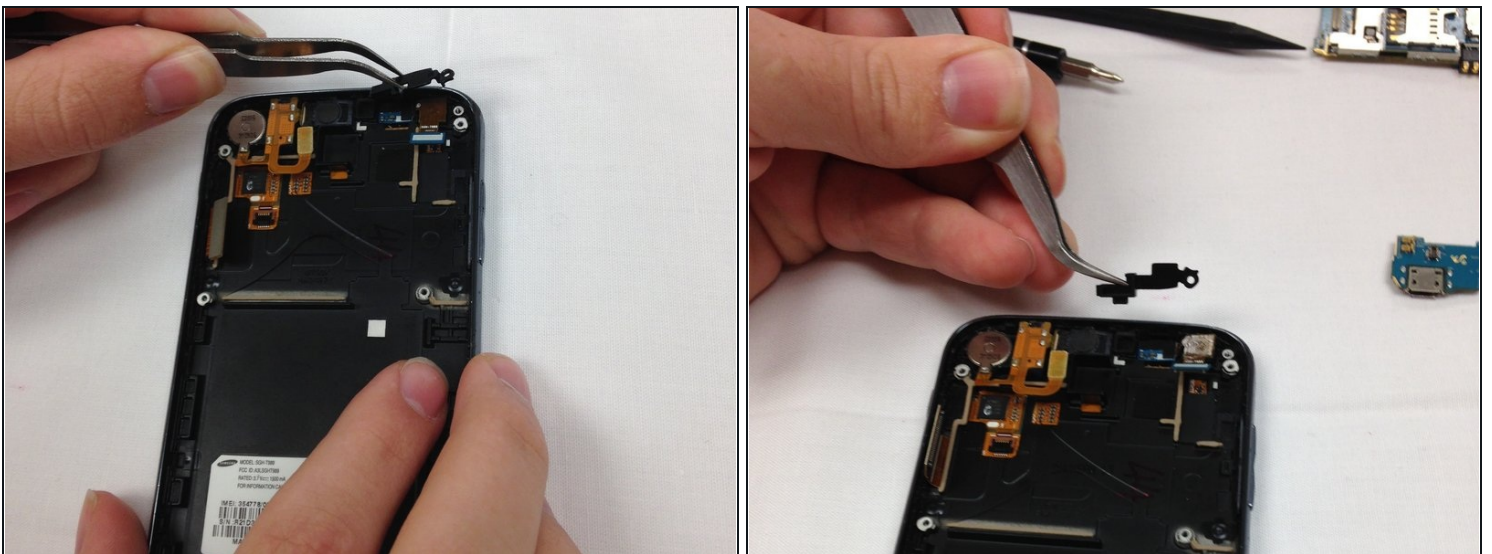


## Step 9 — Front Camera



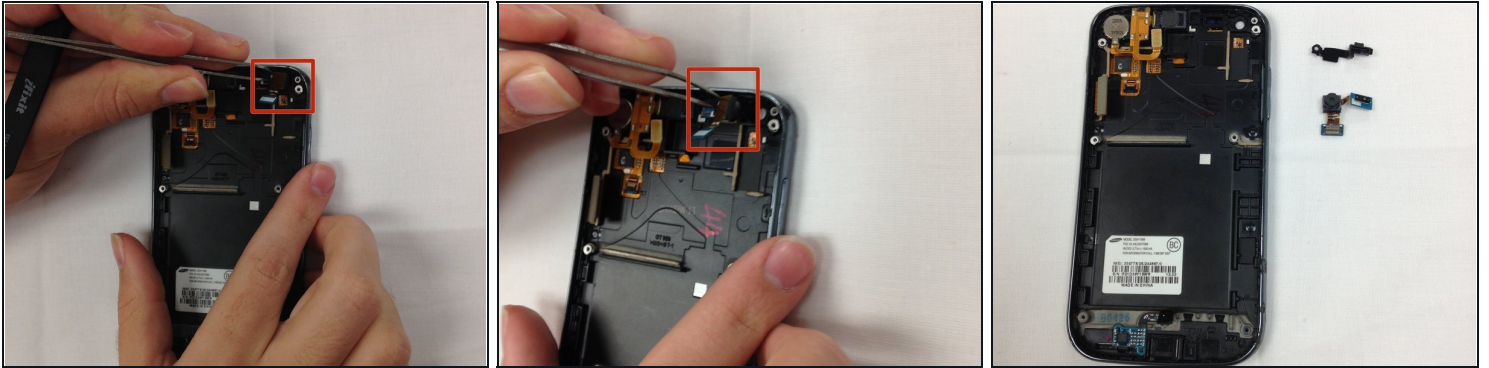
- To remove the front camera we need to first remove the screw indicated by the red circle and the cover plate. The screw size is 1/16 of an inch (1.6 mm)
- After the screw has been removed, the cover plate can be removed.

## Step 10



- Use the tweezers to remove the plastic bar which holds the camera in place.

## Step 11



- The camera is now exposed.
- Carefully lift the camera out of the phone with the tweezers.

---

To reassemble your device, follow these instructions in reverse order.