



Xserve G5 CD Drive Replacement

Today I will replace this little CD drive on my Xserve G5 guys ! And I will show you how to do !

Written By: alphaLONE



INTRODUCTION

It's my first guide so hello fixers ! This Xserve G5 is the top of the top : Dual 2.7 Ghz PowerPC G5 from IBM, 2 GB DDR, 3x 80GB. But a sad day, the PSU died. That's all. So now, repair !



PARTS:

- [Xserve G5 DVD drive](#) (1)
-

Step 1 — CD/DVD drive



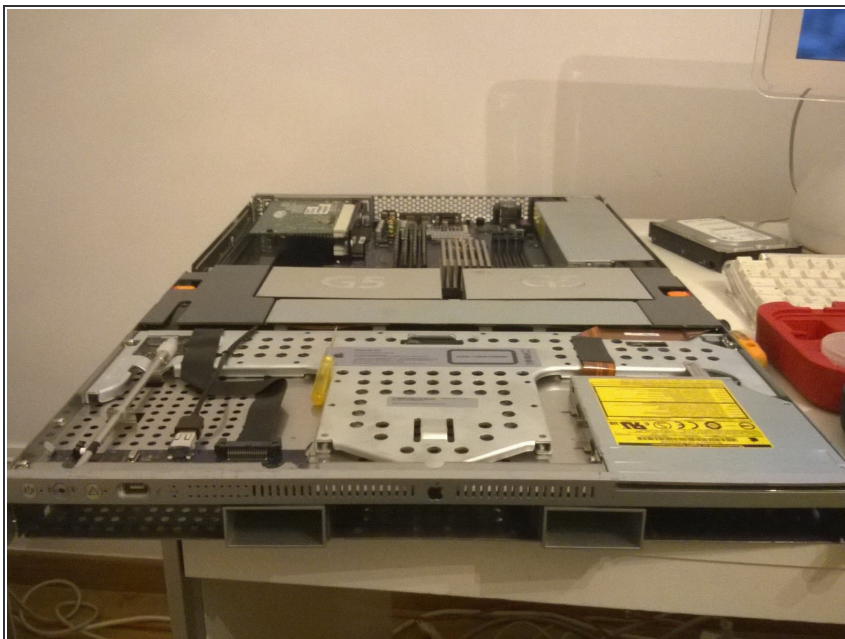
- Here's my dead Xserve G5. I need a new power supply for it. So he will serve for the demo.

Step 2



- Unscrew the two screws.

Step 3



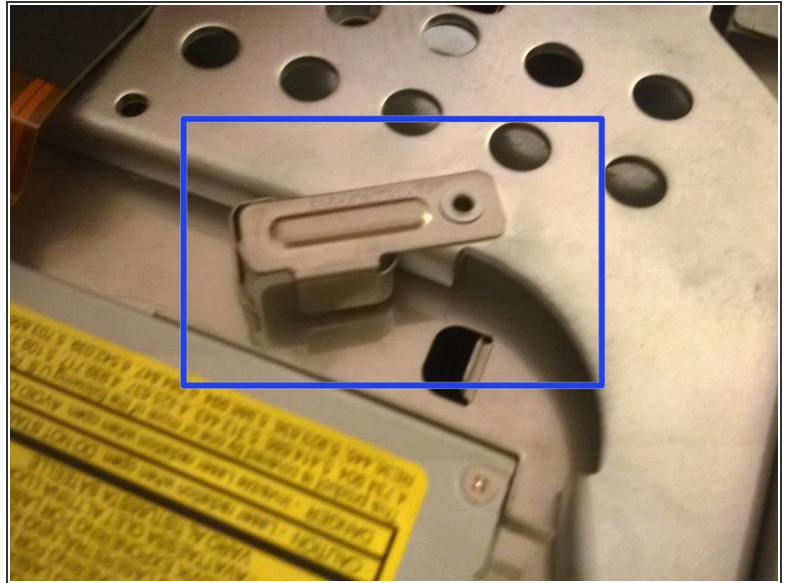
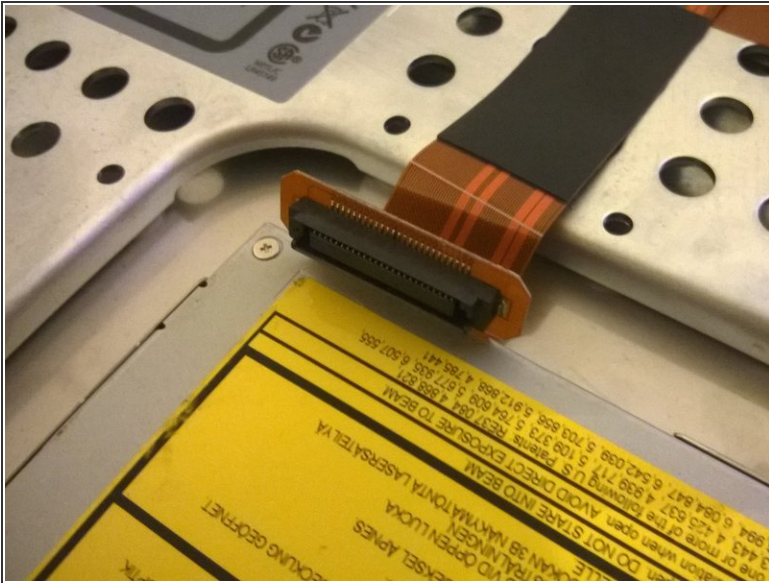
- Remove the top of the server. You will have something like this.

Step 4



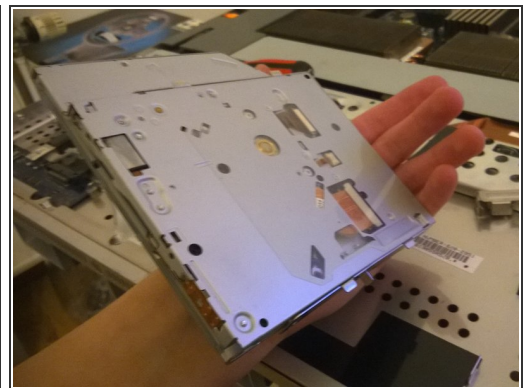
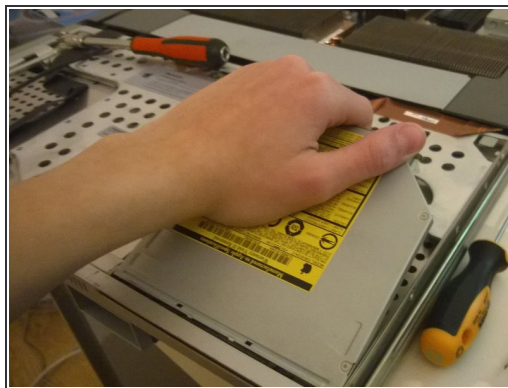
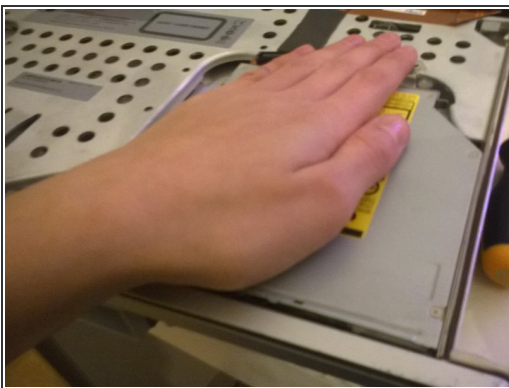
- Hello little CD drive ! It's retirement time !

Step 5



- Disconnect the cable.
- Push the little metal thing to the left to unsecure the CD drive.

Step 6



- Push the drive
- Pull the drive.
- And finally, take the drive !

To reassemble your device, follow these instructions in reverse order.

This document was generated on 2020-11-24 01:04:40 PM (MST).

