



Toshiba Satellite C660 CMOS / BIOS Battery Replacement

CMOS / BIOS Battery replacement for Toshiba...

Written By: ZFix



INTRODUCTION

CMOS / BIOS Battery replacement for Toshiba Satellite C660 with video tutorial:

[video: <https://www.youtube.com/watch?v=lDP6bleDGDI>]

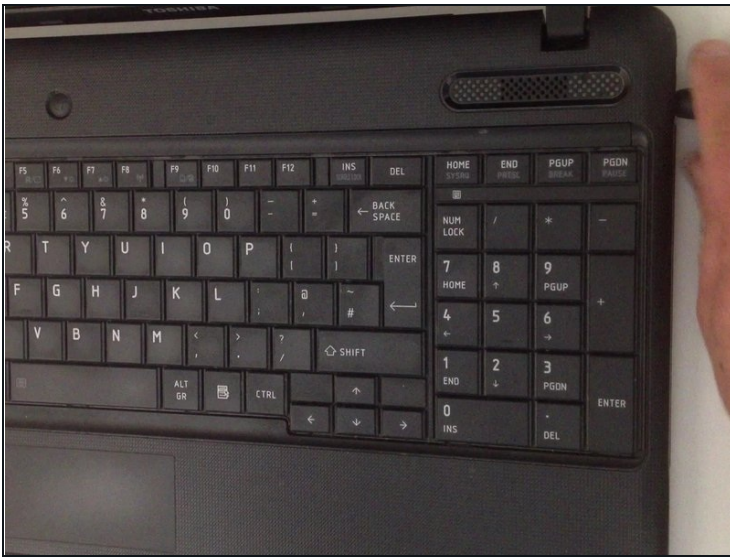
TOOLS:

Phillips #00 Screwdriver (1)
iFixit Opening Tool (1)
iFixit Opening Picks (Set of 6) (1)

PARTS:

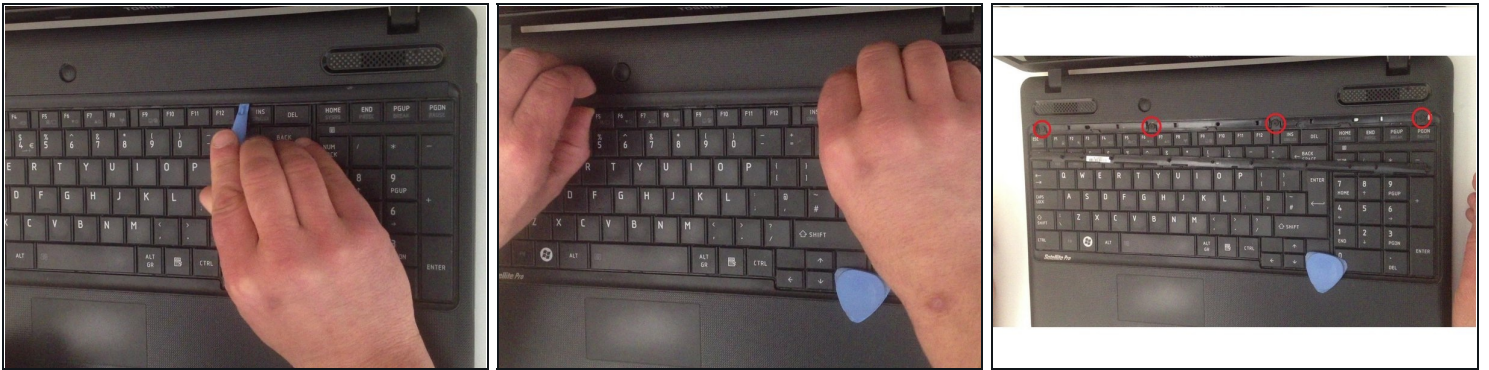
CR2032 Lithium Battery (1)

Step 1 — CMOS / BIOS Battery replacement



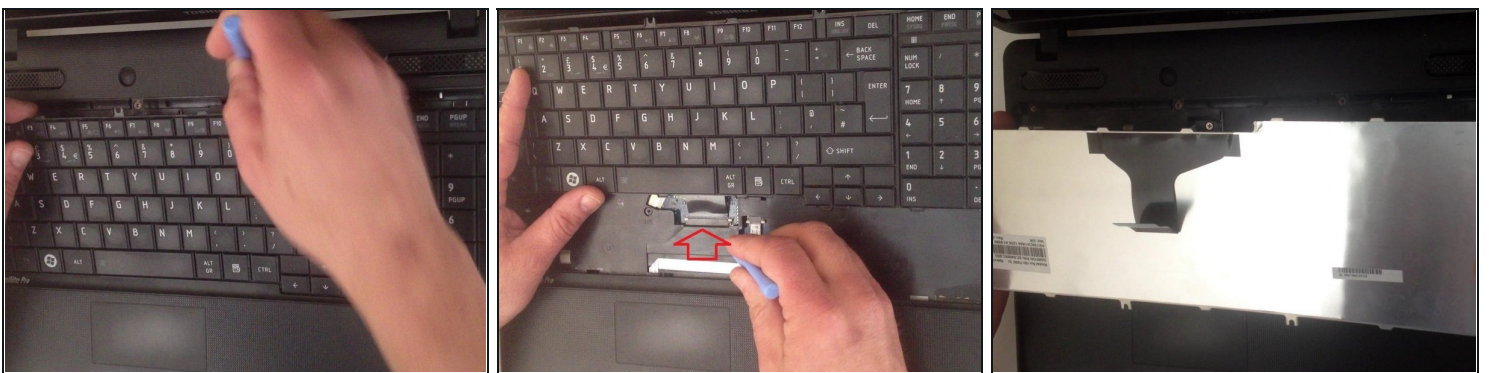
- **Disconnect the charger and the battery.**

Step 2



- Remove the narrow plastic lid and unscrew 4x Phillips screw.

Step 3



- Remove the keyboard.

Step 4



- This is the internal CMOS / BIOS battery. Use small screwdriver to remove it.

Step 5



- And that's it!

To reassemble your device, follow these instructions in reverse order.