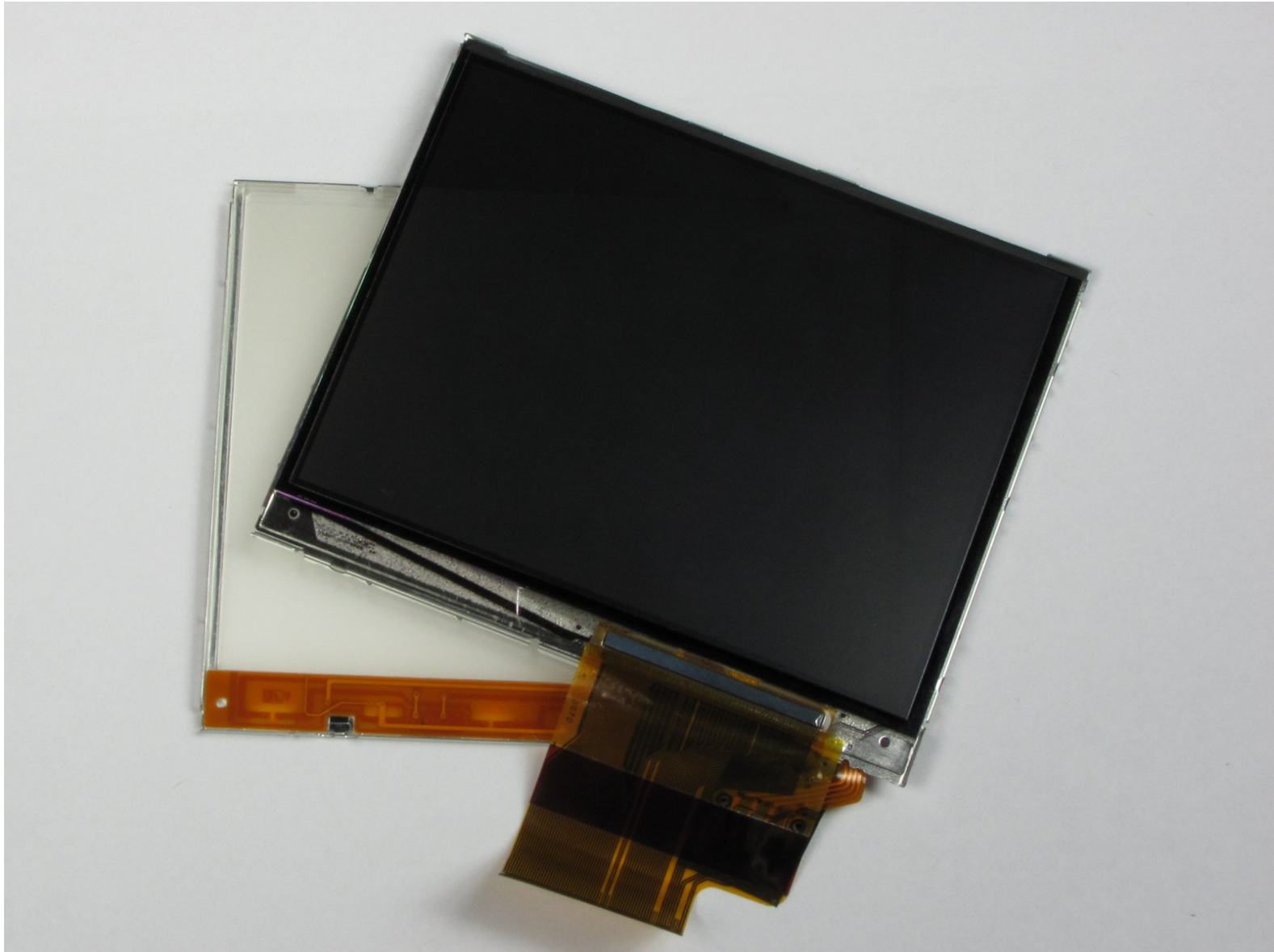




# Garmin Nuvi 200 Display Replacement

Written By: Nick



---

# INTRODUCTION

Opening the Nuvi and replacing a broken/damaged display.



## TOOLS:

- [T5 Torx Screwdriver](#) (1)
  - [iFixit Opening Tools](#) (1)
-

## Step 1 — Rear Casing



- Peel off the sticker from the bottom of the device to reveal two screws.

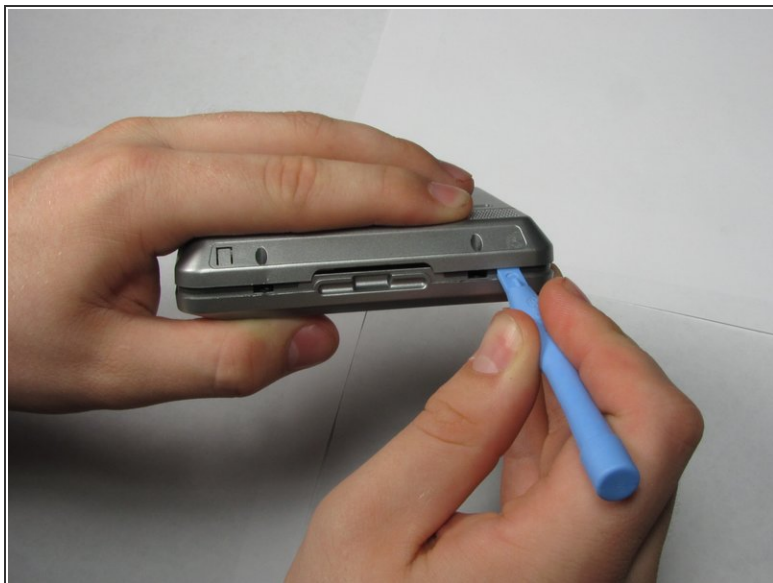
## Step 2



- Remove two T5 Torx screws.



### Step 3



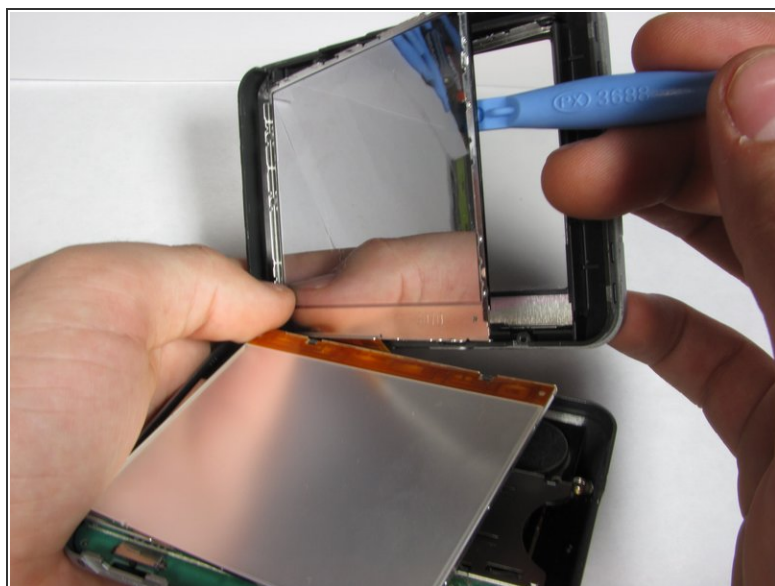
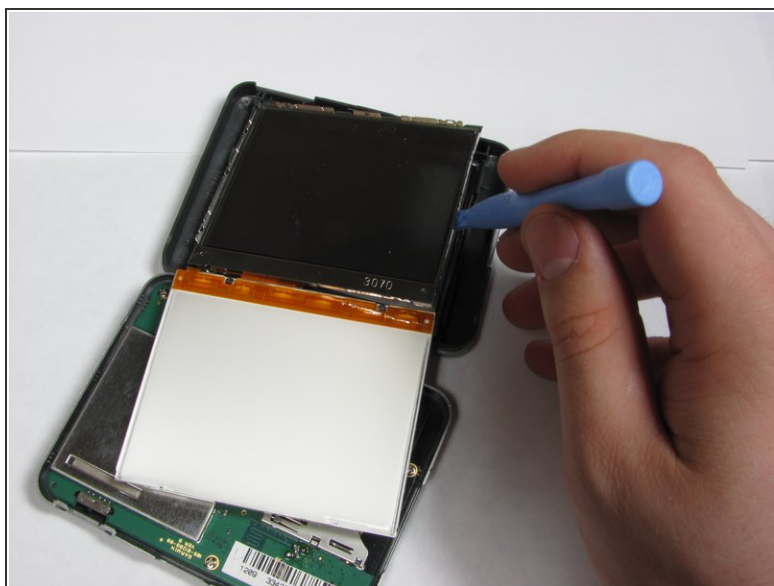
- Insert a plastic opening tool in the gap between the front and rear casing.
- Carefully work the tool around the gap, separating the two halves of the case.
- ⓘ Keep the power switch in place while removing the rear case.

### Step 4 — Display



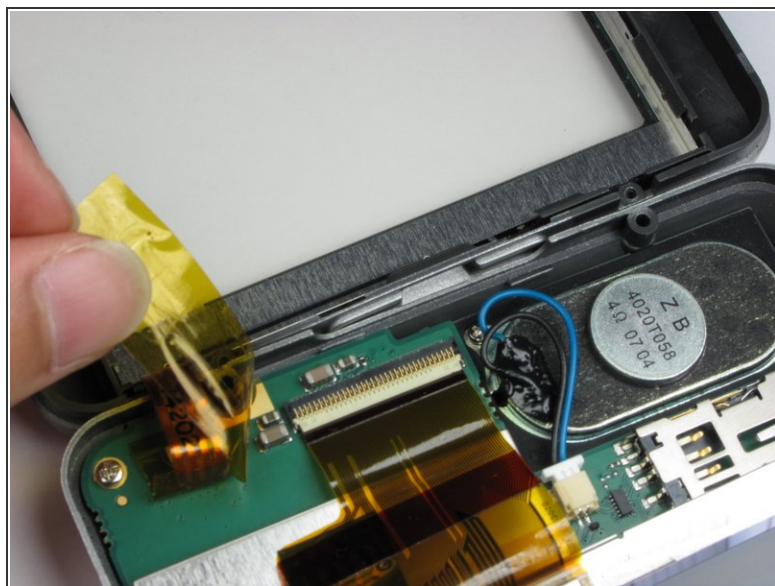
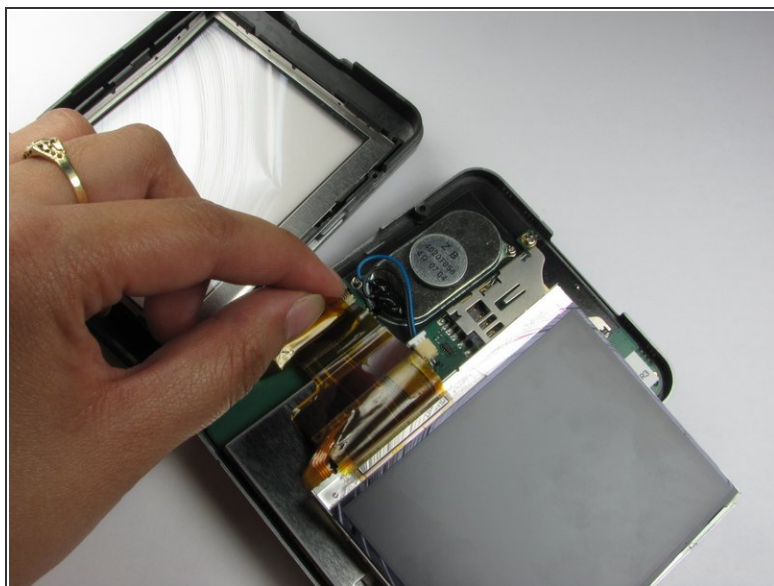
- Apply pressure to the tabs holding the screen in place with the plastic opening tool

## Step 5



- Apply pressure to the same tabs again to remove the front of the screen.

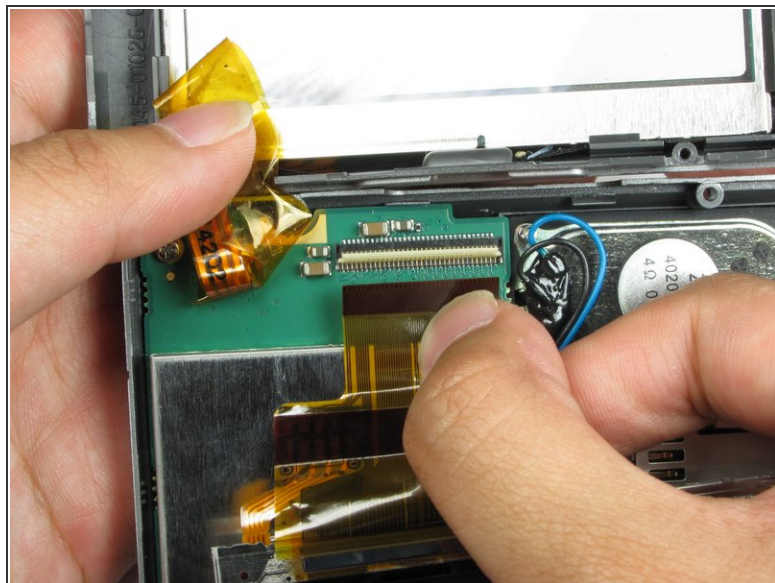
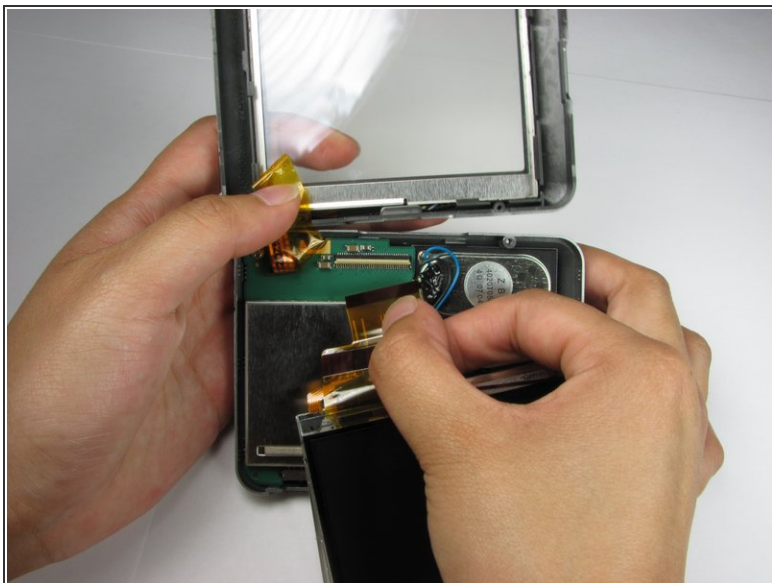
## Step 6



- Peel away the material holding the ribbon cable in place.
- ⓘ Peeling the sticker halfway will allow you to access the ribbon cable. Removing it fully will allow you to detach the upper case from the lower case.

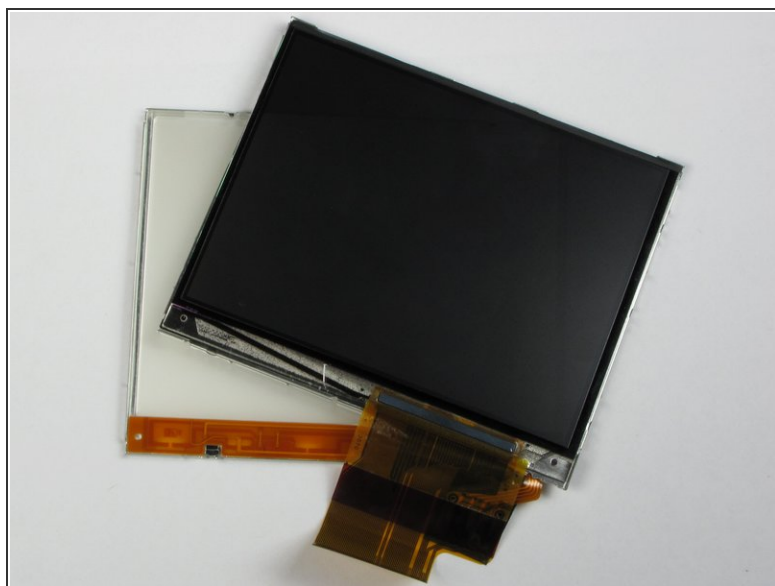


## Step 7



- Disconnect the ribbon cable from the logic board.
- ⓘ Make sure to disconnect the cable from both ports.

## Step 8



- ⓘ The display consists of two screens which are held together by the ribbon.

To reassemble your device, follow these instructions in reverse order.