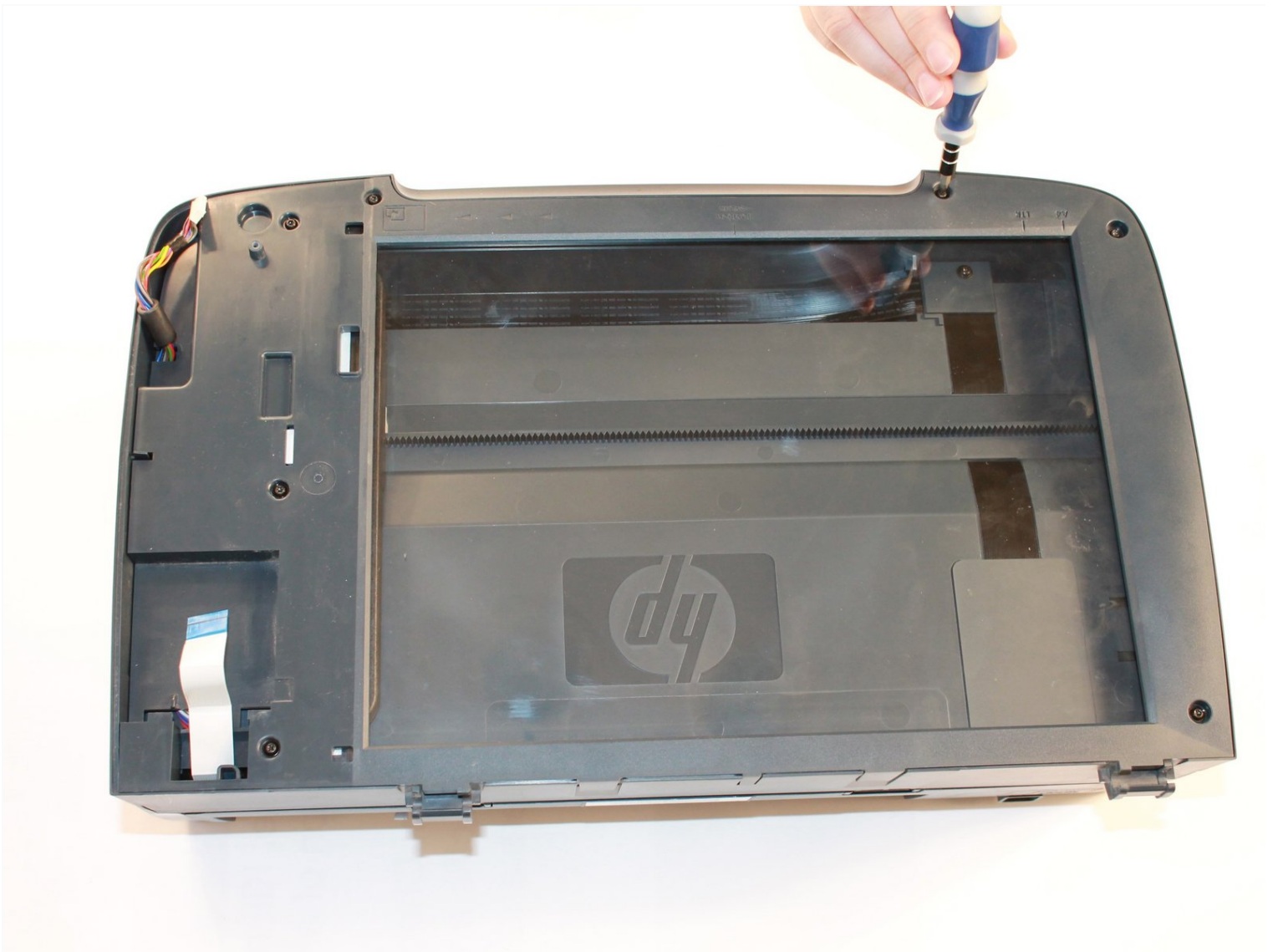




# HP PSC 2355 Scanner Glass Replacement

A damaged scanner glass will at best produce...

Written By: Amber Gabaldon



# INTRODUCTION

A damaged scanner glass will at best produce poor quality images, and at worst damage other parts of the printer or cause injury. Replacing the scanner glass only requires a couple tools and a little patience.



## TOOLS:

Spudger (spatule antistatique) (1)

Tournevis Torx Security TR9 (1)

---

## Step 1 — Scanner Lid



- Grasp the scanner lid cover from the front of the device and lift lid all the way up until it stands on its own.

## Step 2



- With two hands, grasp the lid on both sides near the hinges and lift straight up to release the lid from each hinge.

## Step 3 — Scanner Glass



- Locate the finger notch on the inside top left half of the bezel (control) panel cover.
- Place your index finger in the notch and lift up to unsnap the panel.
- Set the panel cover aside.



## Step 4



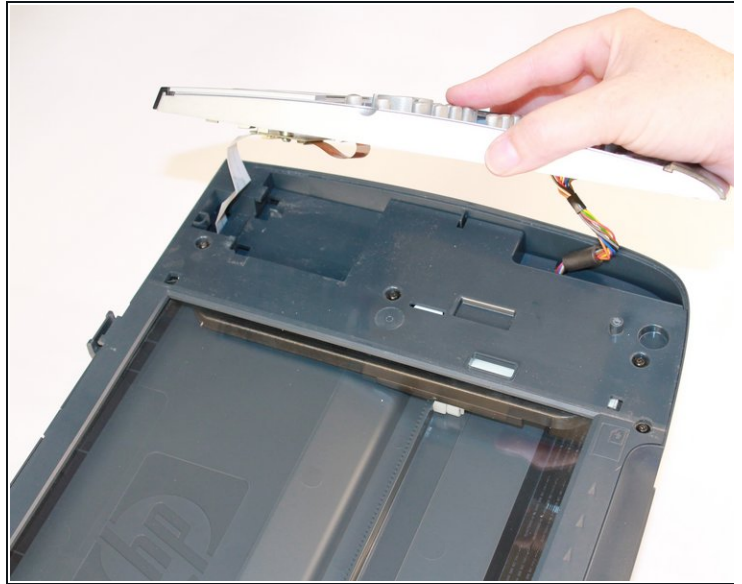
- Use a T9 Torx screwdriver to remove the 9 mm screw.

## Step 5



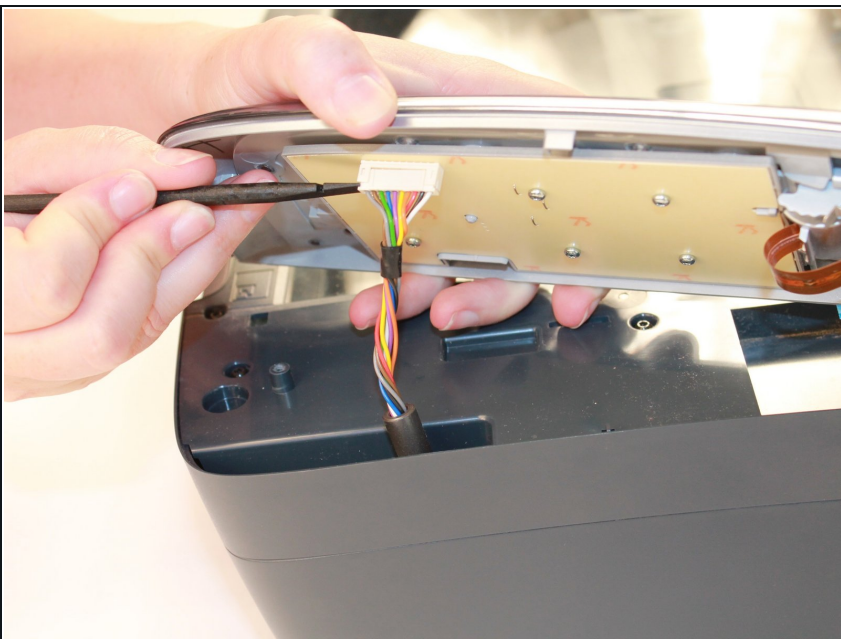
- From the front of the printer, remove the button panel by pulling it towards you while slightly lifting it up.


## Step 6



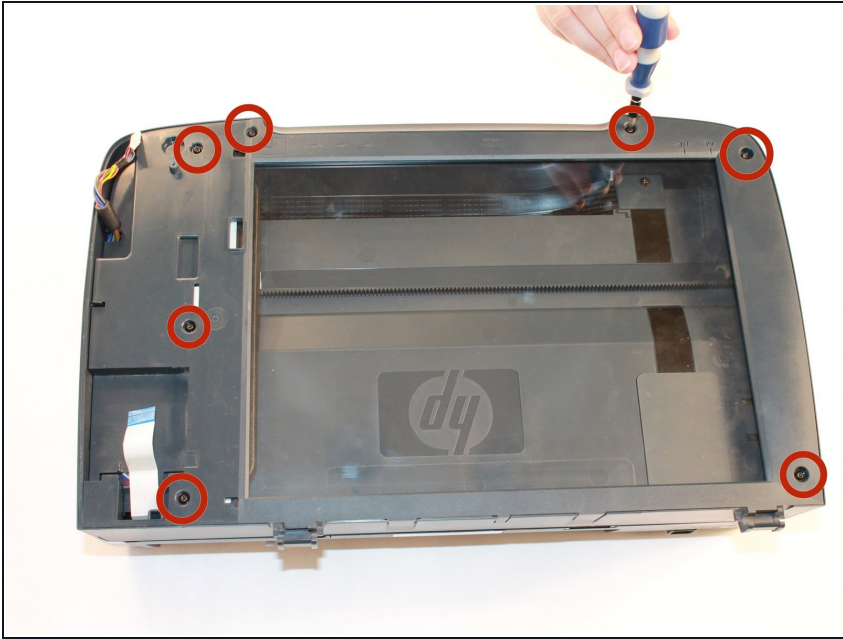
- Disconnect the white ribbon cable by grasping it between your thumb and forefinger.
- Gently pull to release the ribbon from the green circuit board.

## Step 7



- Next, use a spudger to pry the flat ribbon computer cable by the plastic connection end loose. Carefully separate it from the prongs on the button panel.
-  Now the whole button should be completely disconnected from the printer.
- Set button panel aside.

## Step 8



- Use the T9 Torx screwdriver to remove the seven 9 mm screws on the top plastic frame around the glass.

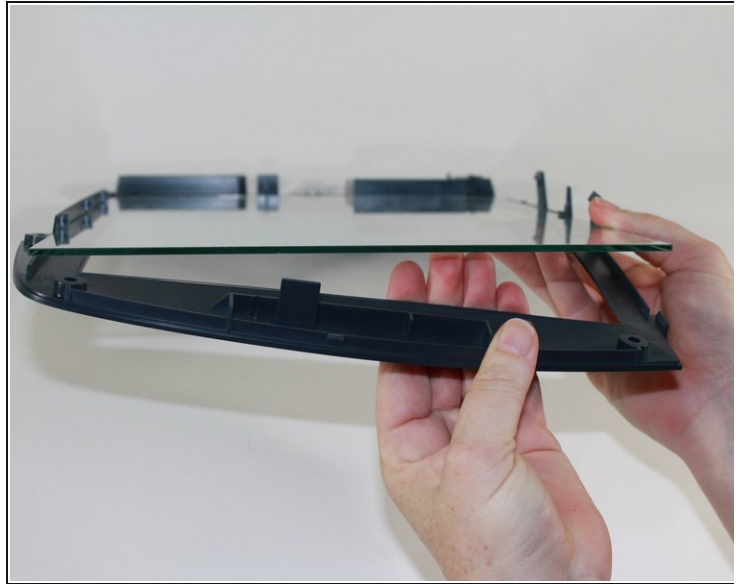
## Step 9



- From the back of the printer, locate the two large plastic tabs as shown.
- With your index fingers underneath each tab, gently and simultaneously pull the tabs towards you and upwards to release the tabs from the plastic clasps behind them.
- Remove the whole plastic frame that holds the glass.

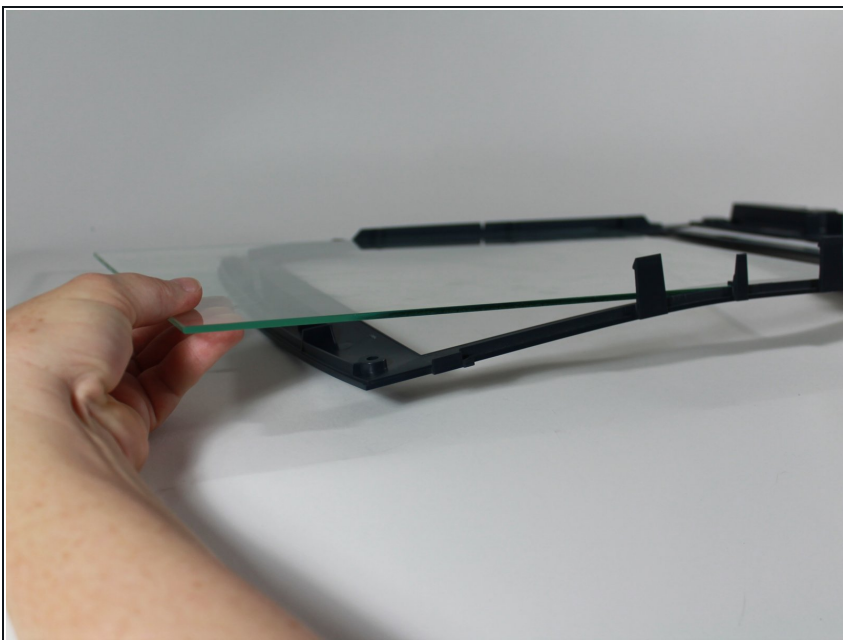


## Step 10



- Gently lift the glass/plastic bed from the edge on the side opposite of the button/control panel section.
- As shown in the second image, gently lift the glass pane up so that it is above the plastic tab that holds it into place.

## Step 11



- Proceed to slide the glass pane out and over the plastic tab to remove it completely from the plastic bed.
- ☑ Replace the glass with your new glass pane. To fully reassemble the printer, follow these instructions in reverse order.

---

To reassemble your device, follow these instructions in reverse order.