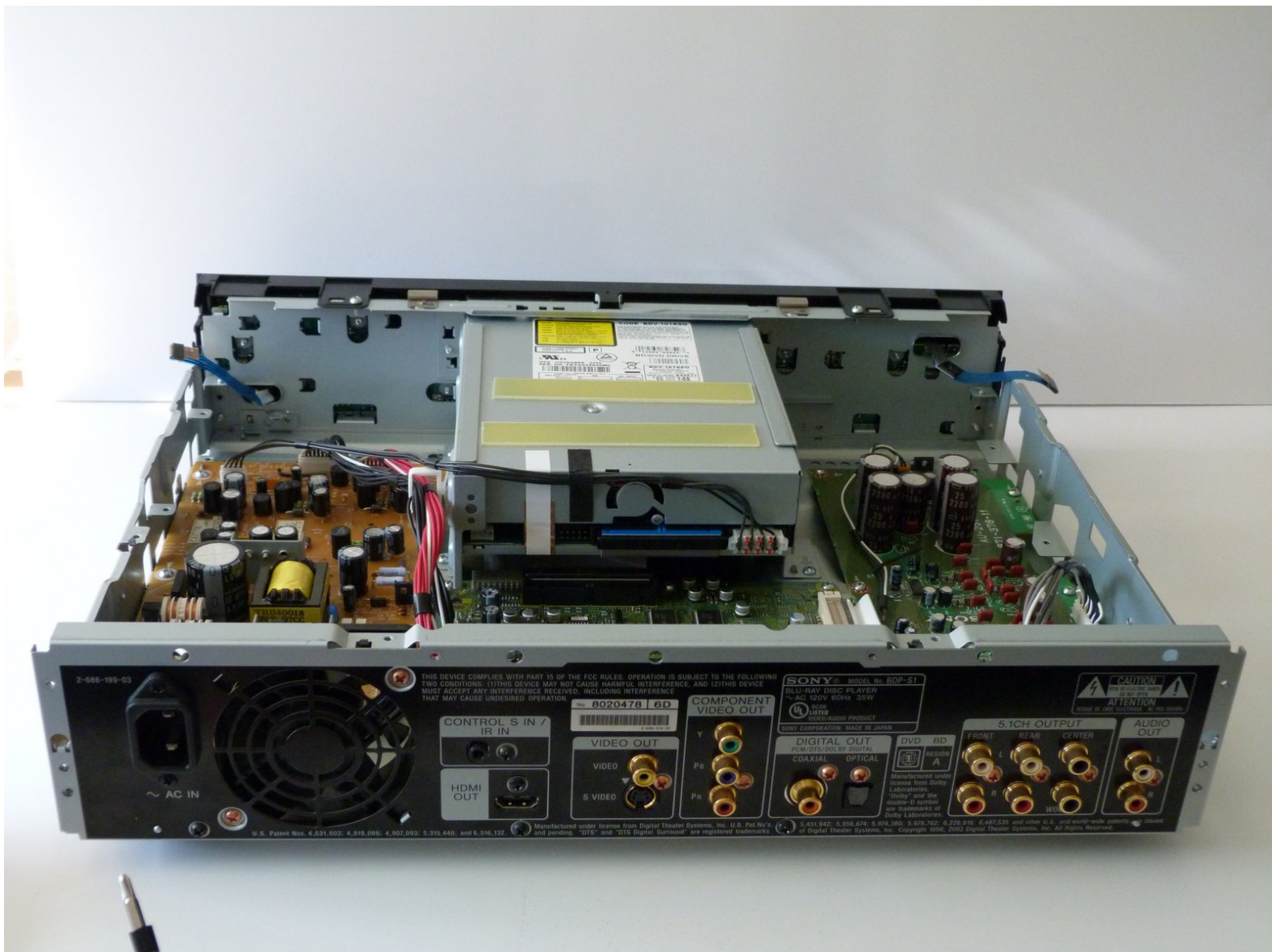




# Sony BDP-S1: Getting inside the device

Removal of the outer panels so you can get inside the device for various replacements

Written By: Sam



---

## INTRODUCTION

Take off the side panels, top panel, and two metal supports. Once done, you have access to the inside of the device. This guide is just a lot of unscrewing!

---

### TOOLS:

- [Phillips #2 Screwdriver](#) (1)
-

## Step 1 — Sony BDP-S1: Getting inside the device



- Remove the 12mm screws with the Philips #2 screwdriver which keep the plastic panels in place.
- Don't forget, there are two more 12mm screws on the other side as well.

## Step 2




- First, remove the three 12mm black screws holding the top panel on (Phillips #2).
- Then, remove the two 12mm black screws - one on each side of the back of the device - holding the top panel on.
- Lastly, remove the three 12mm black screws on each side of device.



### Step 3



-  Carefully lift up the top panel, because there are two blue ribbon cables that must be disconnected before removing the panel, and we do NOT want them to break.
- After gently disconnecting the two ribbon cables (you can just pull them out with your hand), take the top off and set it to the side.

### Step 4



- After the top is off, you'll see that there are two metal bars that go across the top of the device.
- Remove each bar by unscrewing the two 10mm silver screws on each end.

To reassemble your device, follow these instructions in reverse order.