



Oster 6329 Power Cord Replacement

Removing the power cord is straightforward, but...

Written By: Timothy Grijalva



INTRODUCTION

Removing the power cord is straightforward, but it does require soldering.

TOOLS:

Phillips #0 Screwdriver (1)

6-in-1 Screwdriver (1)

Soldering Iron (1)

ESD Safe Blunt Nose Tweezers (1)

Step 1 — Outer Shell Removal



- Using the Phillips-head #2 screwdriver, unscrew the three 1cm Phillips-head screws on the plastic base of the toaster to separate the outer metal shell from the plastic base.

Step 2



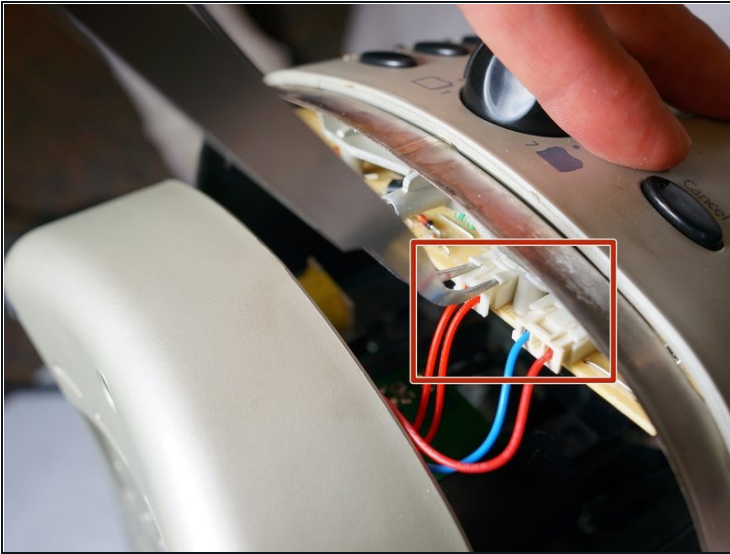
- Push the plastic push-down handle down and pull the plastic handle straight from metal arm.

Step 3



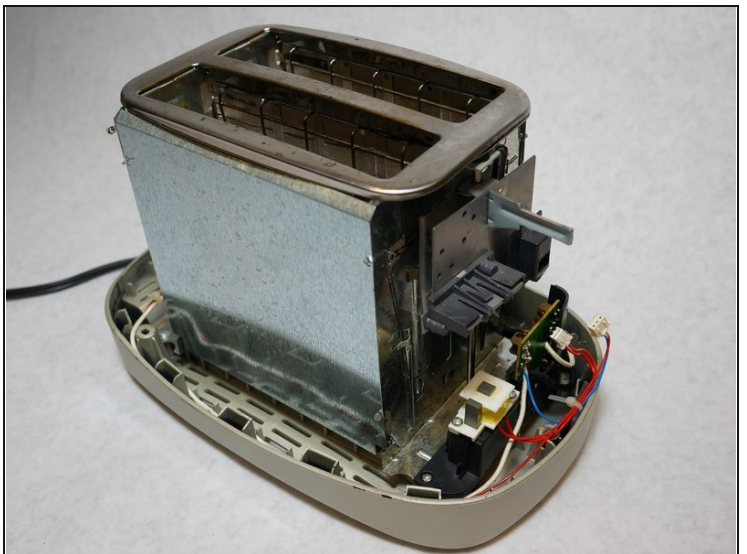
- Loosen the outer metal shell from the plastic base by holding the plastic base while pulling up on the metal shell.
- ① Only lift the outer shell a little so as not to disconnect the cables that connect the circuit board.

Step 4



- Disconnect the cable clips from the circuit board using the [tweezers](#) to free the outer metal shell from the plastic base.

Step 5



- Lift the top outer metal shell.

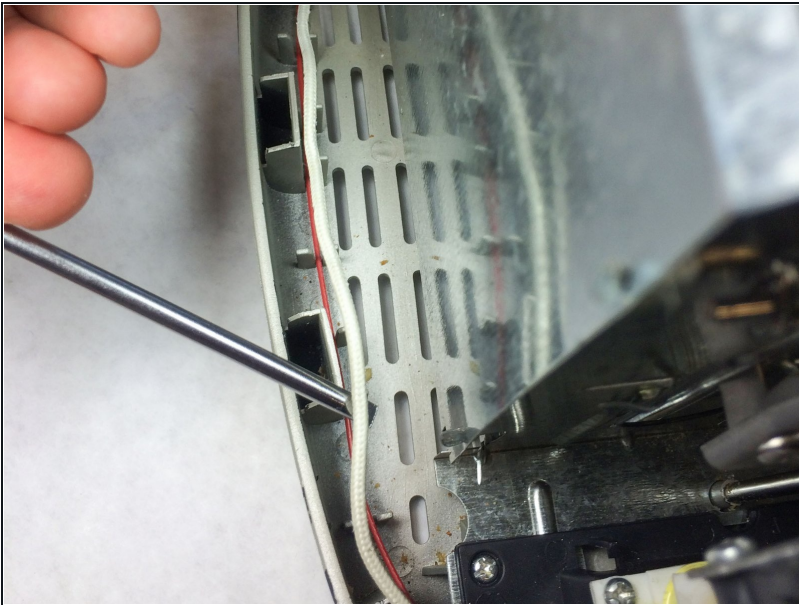
⚠ Carefully lift the outer metal shell at an angle so as not to damage the components in the front of the toaster.

Step 6 — Power Cord



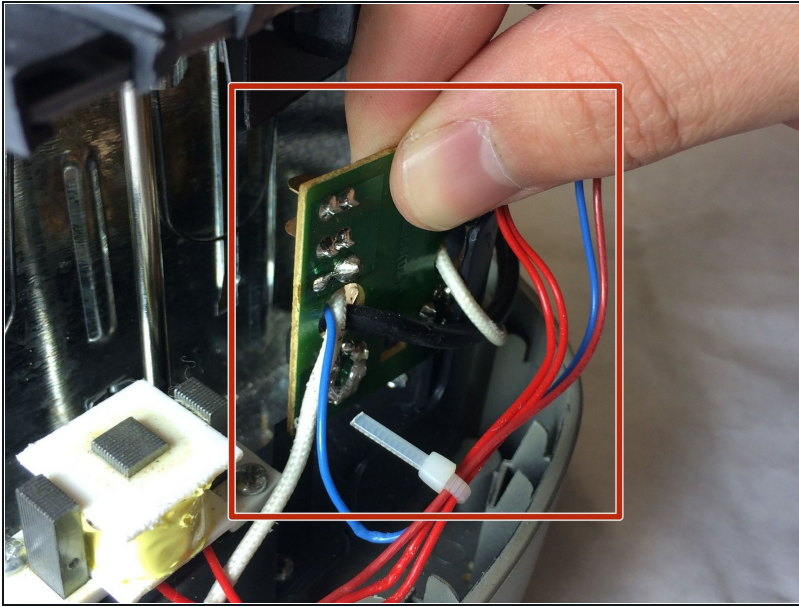
- Using a flat-head screwdriver, pry the power cord from the base of the toaster.

Step 7



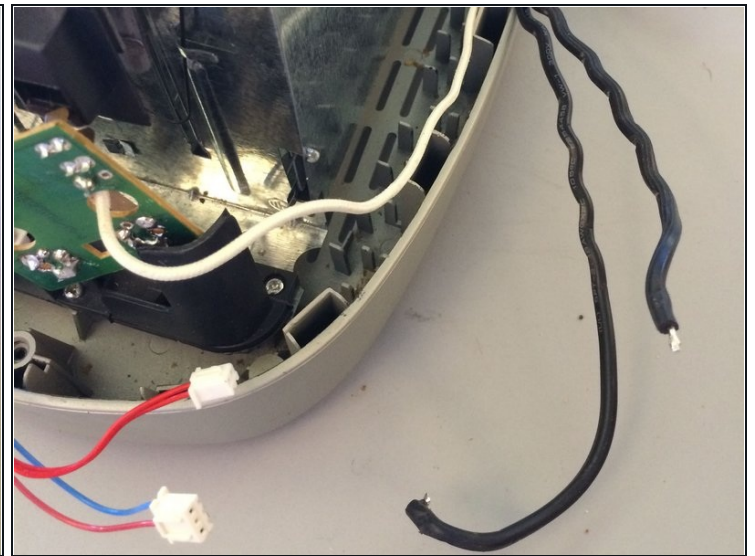
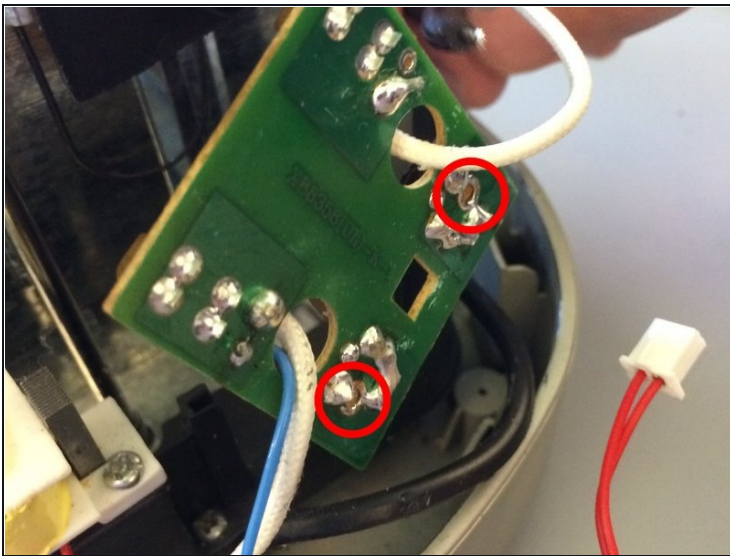
- Using a flat-head screwdriver, pry the white wire from the base.

Step 8



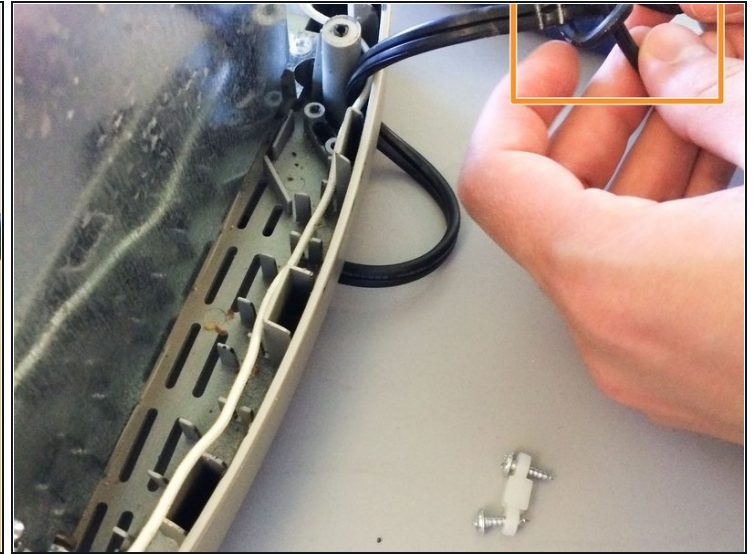
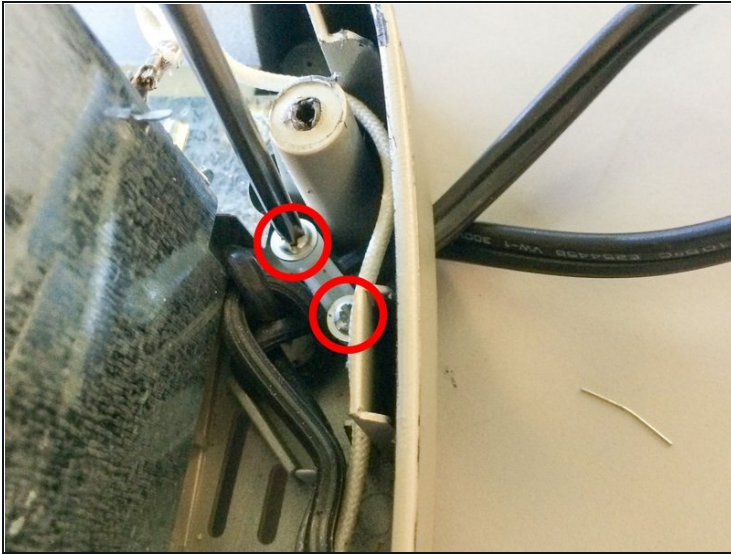
- Locate the circuit board at the front of the toaster where the power cord and white wire meet.
- Pull the circuit board up and out to free the circuit board from the body of the toaster.
- ⓘ It is tightly fit and may take moderate force to remove.

Step 9



- Desolder the power cord from the circuit board at the locations show in the diagram.
- ⓘ For soldering instructions see the [iFixit Soldering Guide](#).
- ⓘ The wires should be free from board when un-soldering is complete.

Step 10



- Unscrew the two 1.5cm Phillips-head screws at the back of the toaster that are holding the power cord in place to remove the retaining clip.
- Remove the plastic retaining clip that is holding the cord in place.

Step 11



- Untie the knot in the power cord.

Step 12



- Pull the cord from the base to remove the cable.

To reassemble your device, follow these instructions in reverse order.