



iPhone 5s Battery Replacement

Prerequisite for removing the battery after the...

Written By: Sam Goldheart



INTRODUCTION

Prerequisite for removing the battery after the logic board.

TOOLS:

Spudger (1)

Scissors (1)

Step 1 — Battery



- Insert the tip of a spudger into the hole in the battery adhesive tab near the headphone jack.
- Lift the tab up slightly and use the spudger to unfold the tab from its recess.

Step 2



- Pull the battery adhesive tab straight up from the phone.
- Cut the black battery adhesive tab between the two white adhesive strips, separating them.

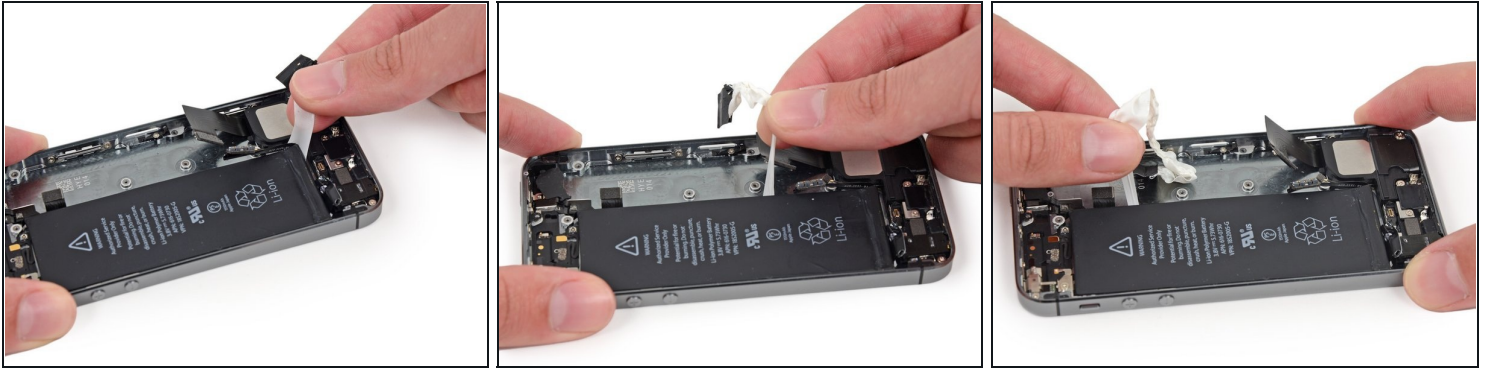
Step 3



⚠ Try to keep the strips flat and unwrinkled during this procedure; wrinkled strips will stick together and break instead of pulling out cleanly.

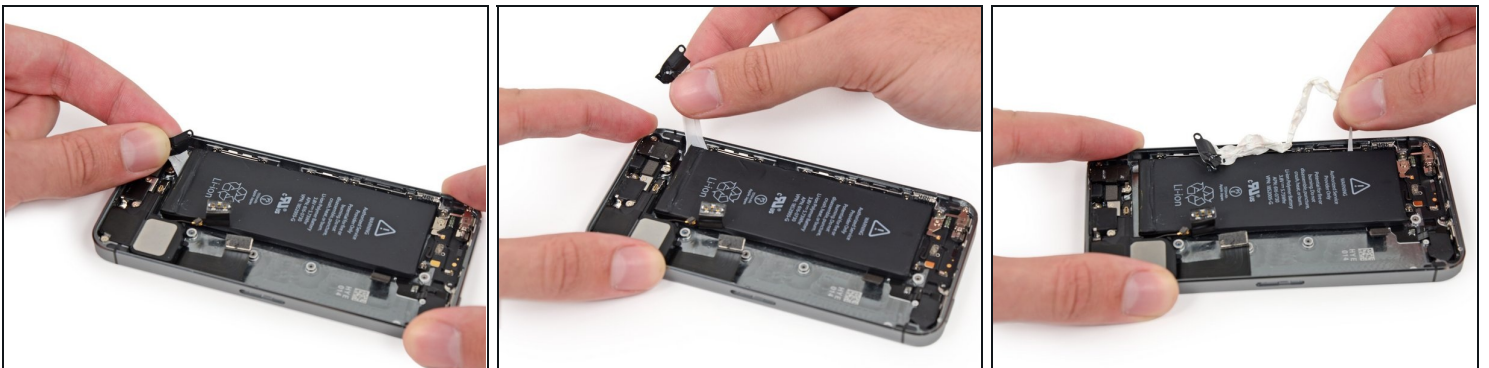
- Slowly pull one of the battery adhesive strips away from the battery, toward the bottom of the iPhone.
- Pull steadily, maintaining constant tension on the strip as it slips out from between the battery and the rear case. For best results, pull the strip at a 60° angle or less.

Step 4



- Guide the strip carefully around the corner and up the side of the battery.
⚠ Be careful not to snag it on the corner of the battery or on any of the other internal iPhone components.
- ⓘ The strip will stretch to many times its original length. Continue pulling, re-grabbing the strip near the battery if necessary, until the entire strip comes free.

Step 5



- Repeat to remove the second adhesive strip.
 - If you removed both strips successfully, skip the next two steps.
- ⚠ If either of the adhesive strips break underneath the battery and cannot be retrieved, try to remove the remaining strip, and then proceed to the next step.**

Step 6



- If any of the adhesive strips broke off and the battery remains stuck to the rear case, [prepare an iOpener](#) or use a hair dryer to heat the rear case directly behind the battery.

Step 7



- Flip the iPhone back over and insert a [plastic card](#) between the case side of the battery and the rear case.
- ⚠ Be careful to keep the card as flat as possible to avoid bending the battery, which may damage it and cause it to release dangerous chemicals.
- Press the card in farther to break up the adhesive behind the battery.

Step 8



- Remove the battery from the rear case.
- ☒ When installing the battery, refer to [this guide](#) to replace your battery's adhesive strips.

To reassemble your device, follow these instructions in reverse order.