



# CanoScan LiDE 35 Scanner Bar Replacement

This guide will help replace the internal scanner bar.

Written By: Nick



---

## INTRODUCTION

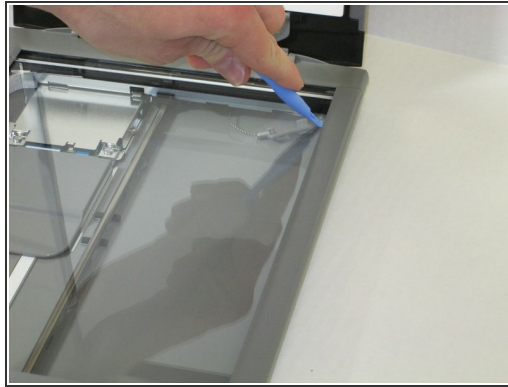
To replace the scanner bar, the glass must first be removed, and then the scanner bar can be easily removed and replaced.



### TOOLS:

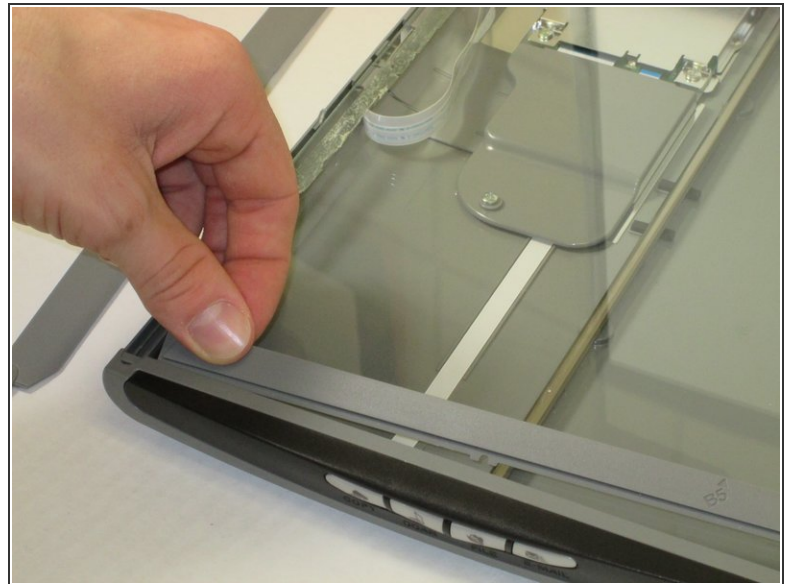
- [iFixit Opening Tool](#) (1)
-

## Step 1 — Scanner Glass



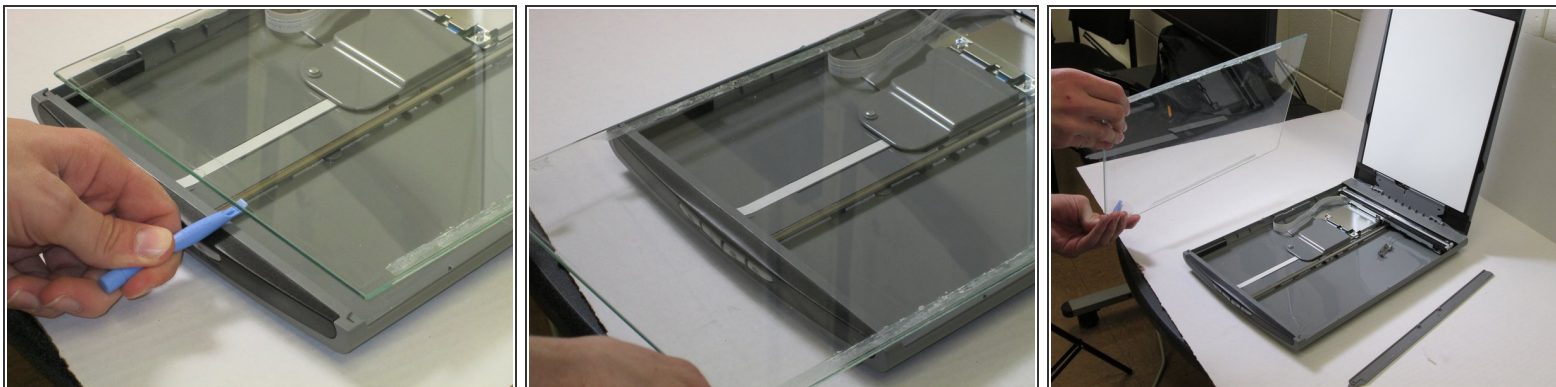
- Slide plastic opening tool under the plastic.
- Gently pry the plastic framing off the glass.
- Repeat on the other side.

## Step 2



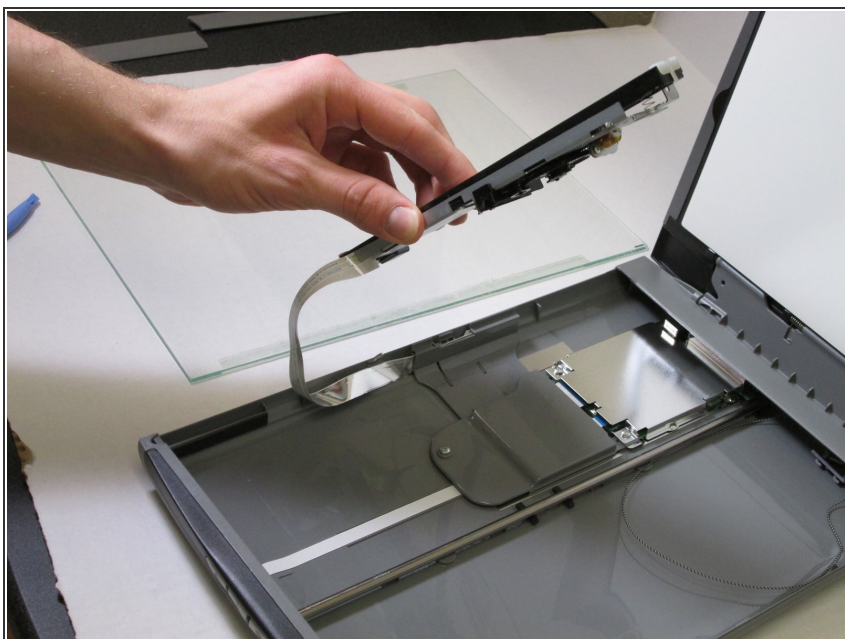
- Remove the front plastic frame.

### Step 3



- Wedge the plastic opening tool under the glass.
- Pull up against glass.
- Slide the glass forward.
- Remove the glass.

### Step 4 — Scanner Bar



- Remove the scanner bar.
- Replace the scanner bar back onto metal center bar.

To reassemble your device, follow these instructions in reverse order.

