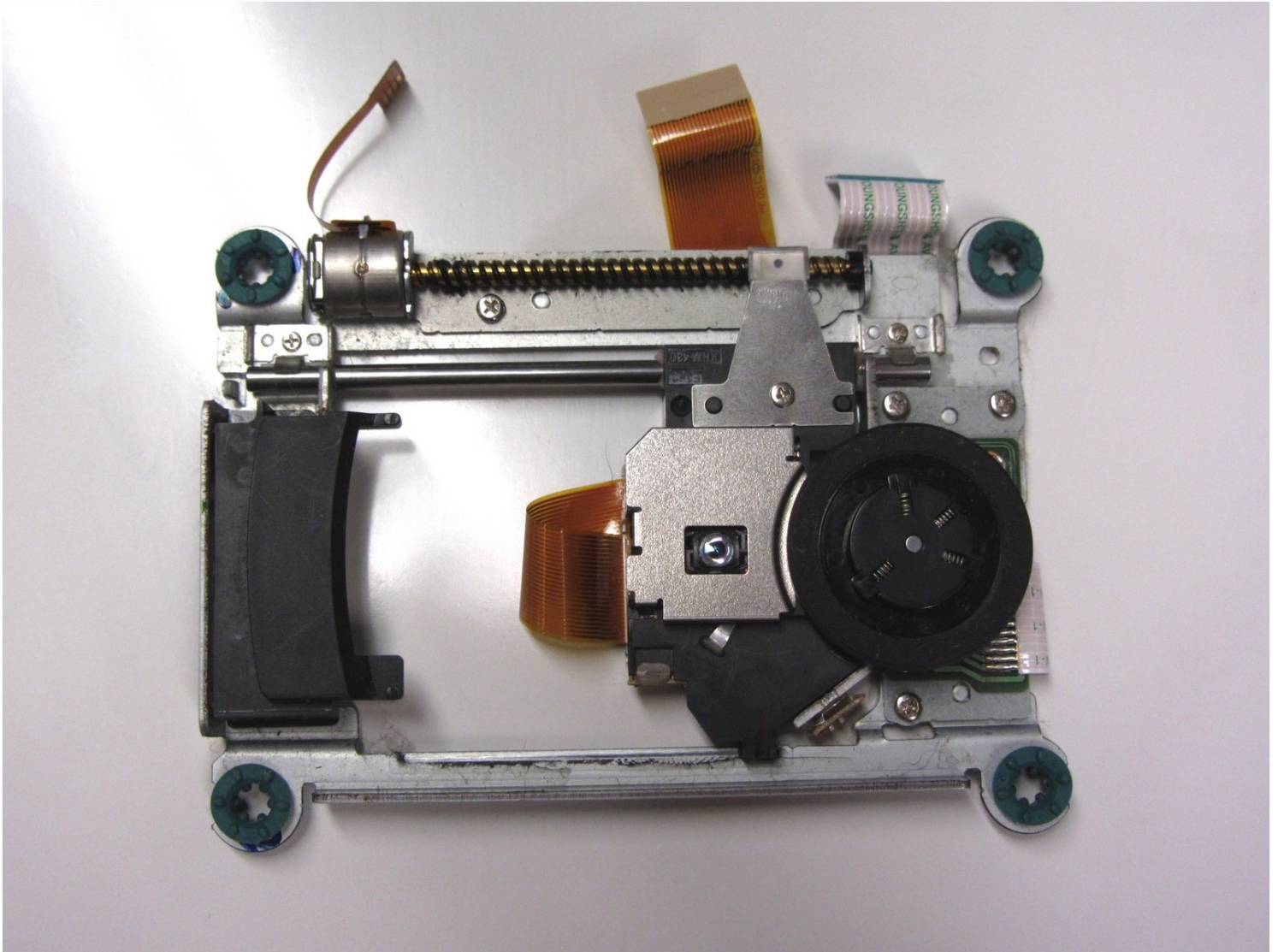




PlayStation 2 Slimline Optical Drive Replacement

Written By: Thomas Sullivan



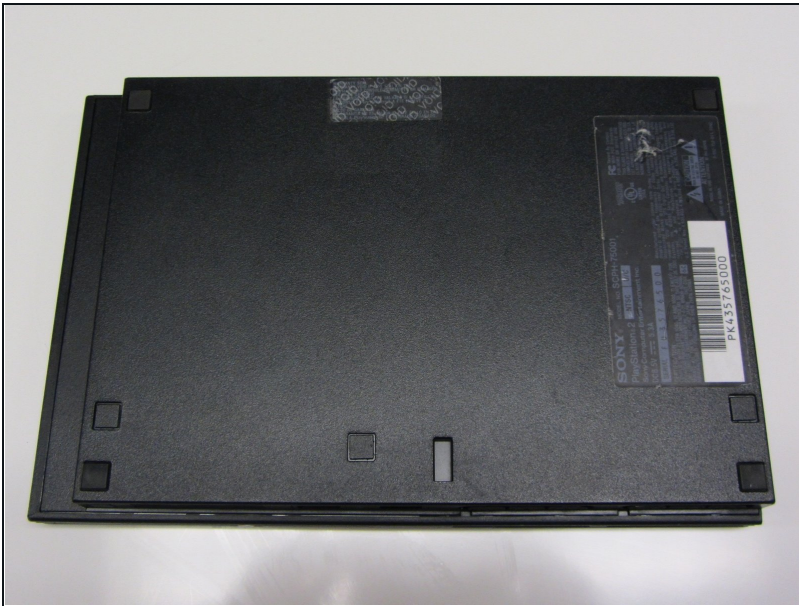
TOOLS:

Phillips #1 Screwdriver (1)

Spudger (1)

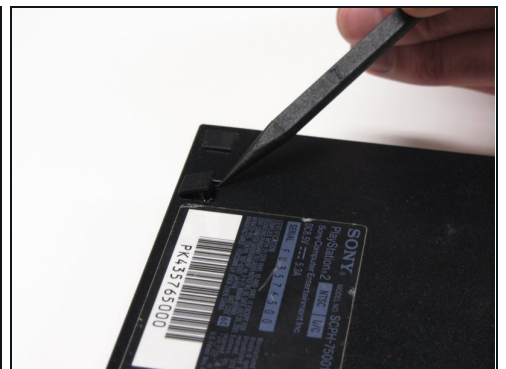
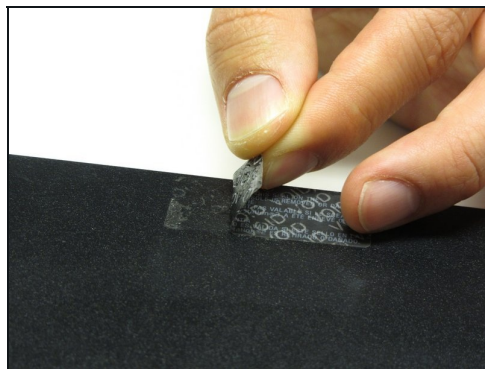
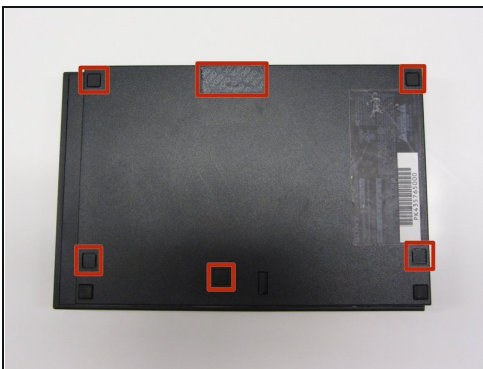
Tweezers (1)

Step 1 — Outer Shell



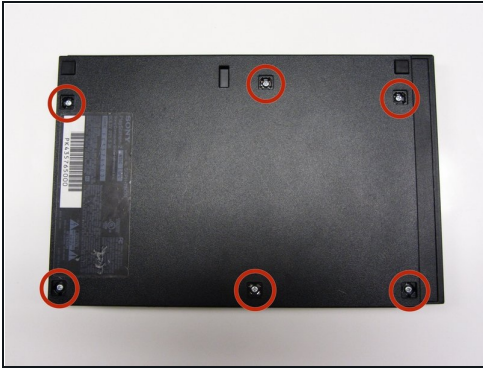
- Disconnect all cables from the console and flip the unit over to reveal its base.

Step 2



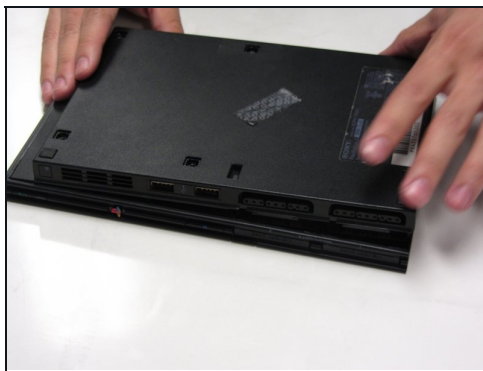
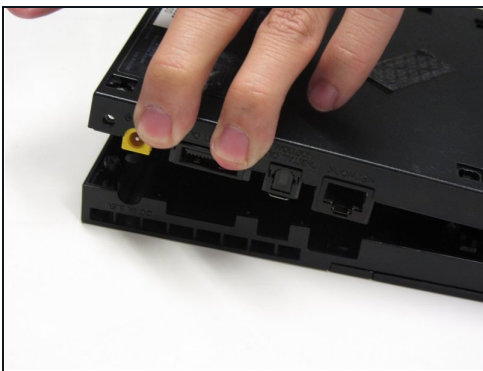
- Locate the 6 feet on the base of the unit. Pry them off using a spudger to reveal the screws.
- ⓘ Note: One of the feet is located under the sticker shown in the photo. Removing this sticker will void any warranty with Sony.

Step 3



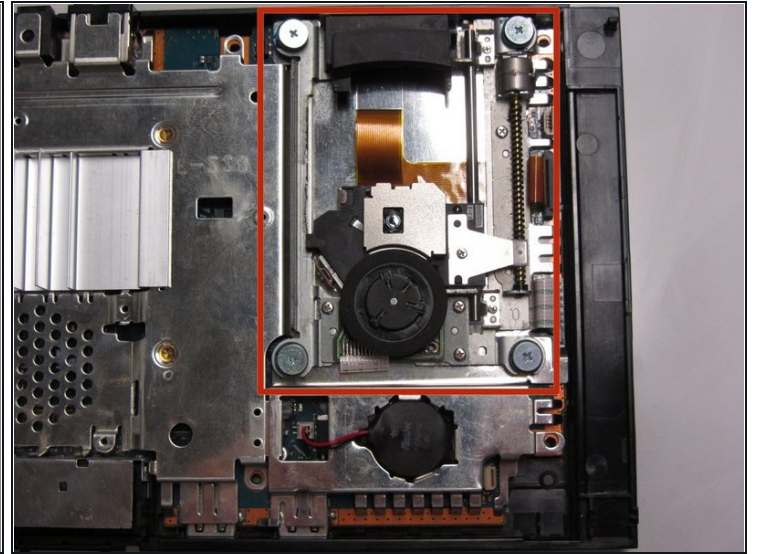
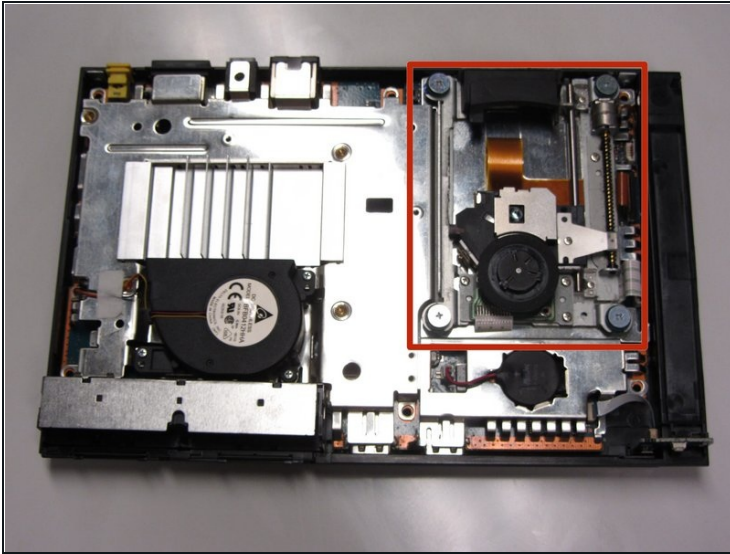
- Remove all six 4.0 mm screws from the base of the unit using a #1 Phillips screwdriver.

Step 4



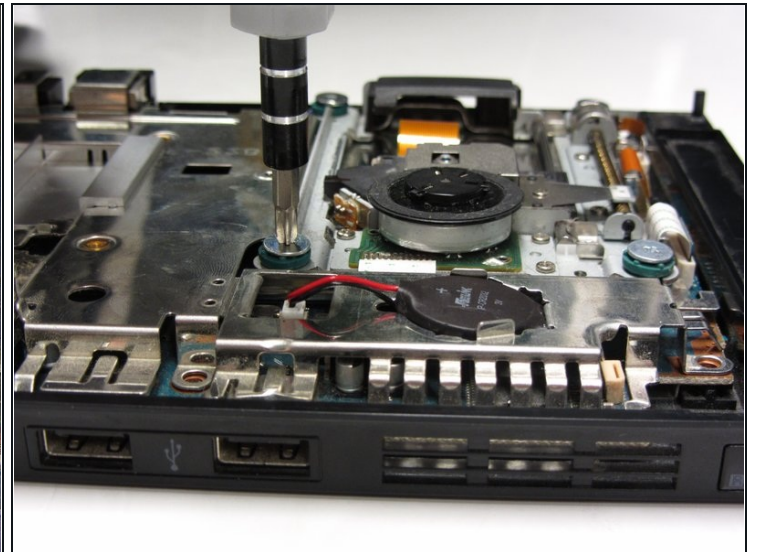
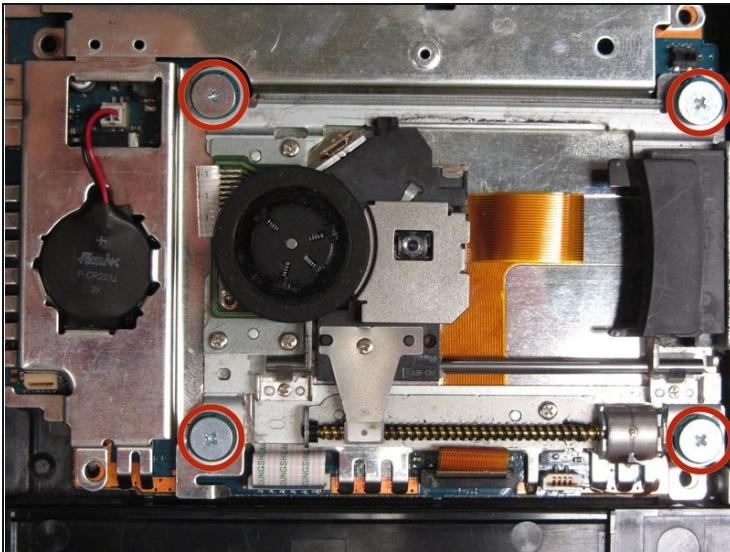
- Starting at the corner at which the power and Ethernet ports are located, pry open the outer shell using a spudger and continue around the entire unit.
- ⓘ Note: You may use your hands for additional force to separate the two pieces of the outer shell.

Step 5 — Optical Drive



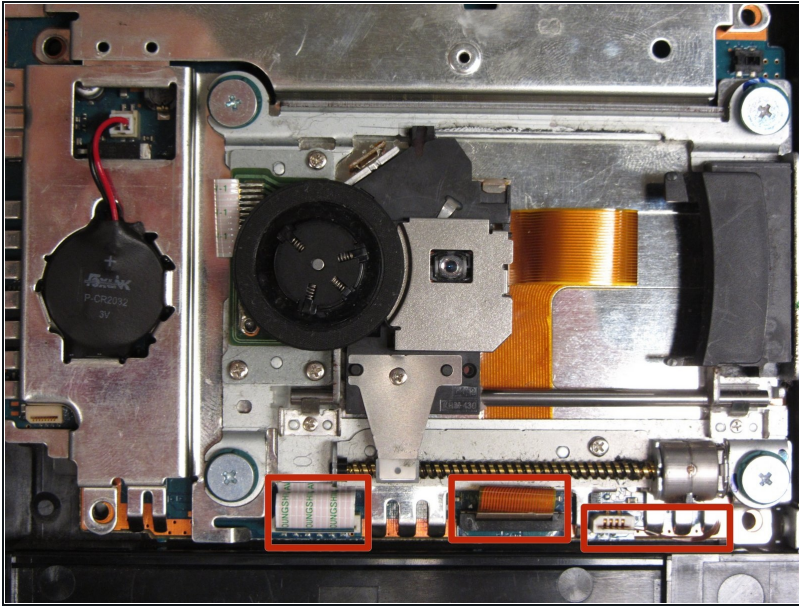
- Locate the optical drive which occupies most of the space on the right side of the unit. It can be identified by the four screws with wide-diameter heads fastening the optical drive to the motherboard.

Step 6



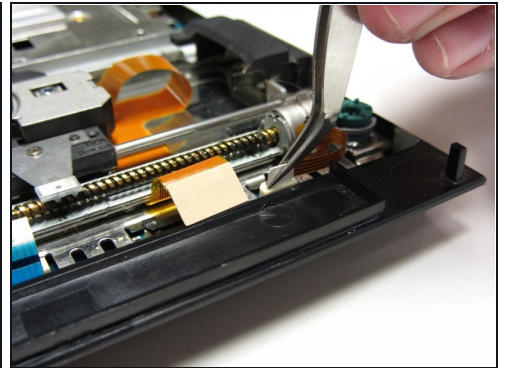
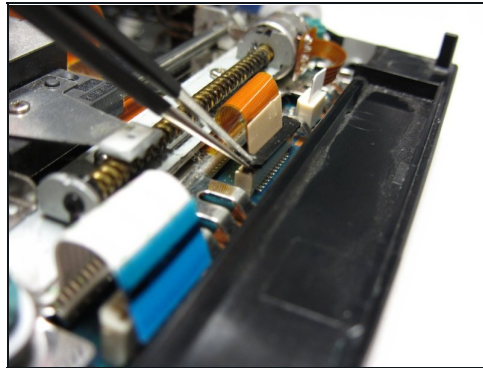
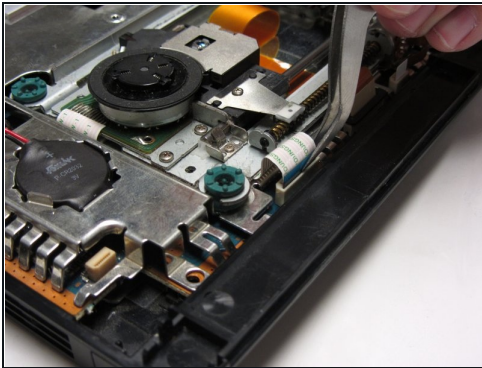
- Remove the four 4.0 mm screws using a #1 Phillips screwdriver.

Step 7



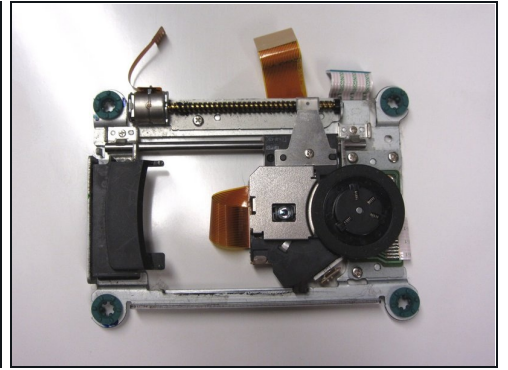
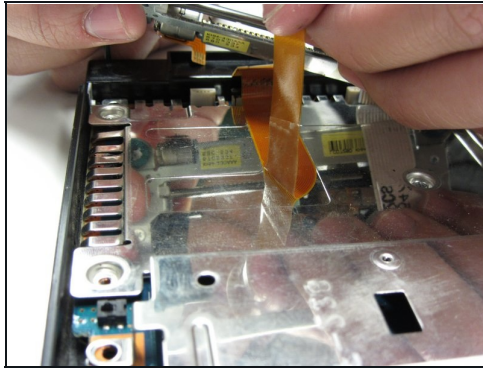
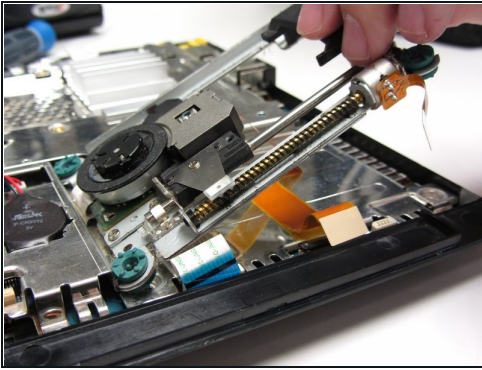
- Locate the three ribbon cables connecting the optical drive to the motherboard.

Step 8



- Gently detach the ribbon cables from the motherboard using a pair of [tweezers](#).
- ① Note: The ribbon cable in the center must be unlocked by lifting up the black tab. Remember to push the tab down upon re-installation to secure the cable.
- ⚠ Caution: Always remove ribbon cables by the plastic handles located on each end. Gripping a ribbon cable anywhere but the provided handles can damage the cable and render the component useless.

Step 9



- Remove any tape fastening the cables to the motherboard and gently lift and remove the optical drive.

To reassemble your device, follow these instructions in reverse order.