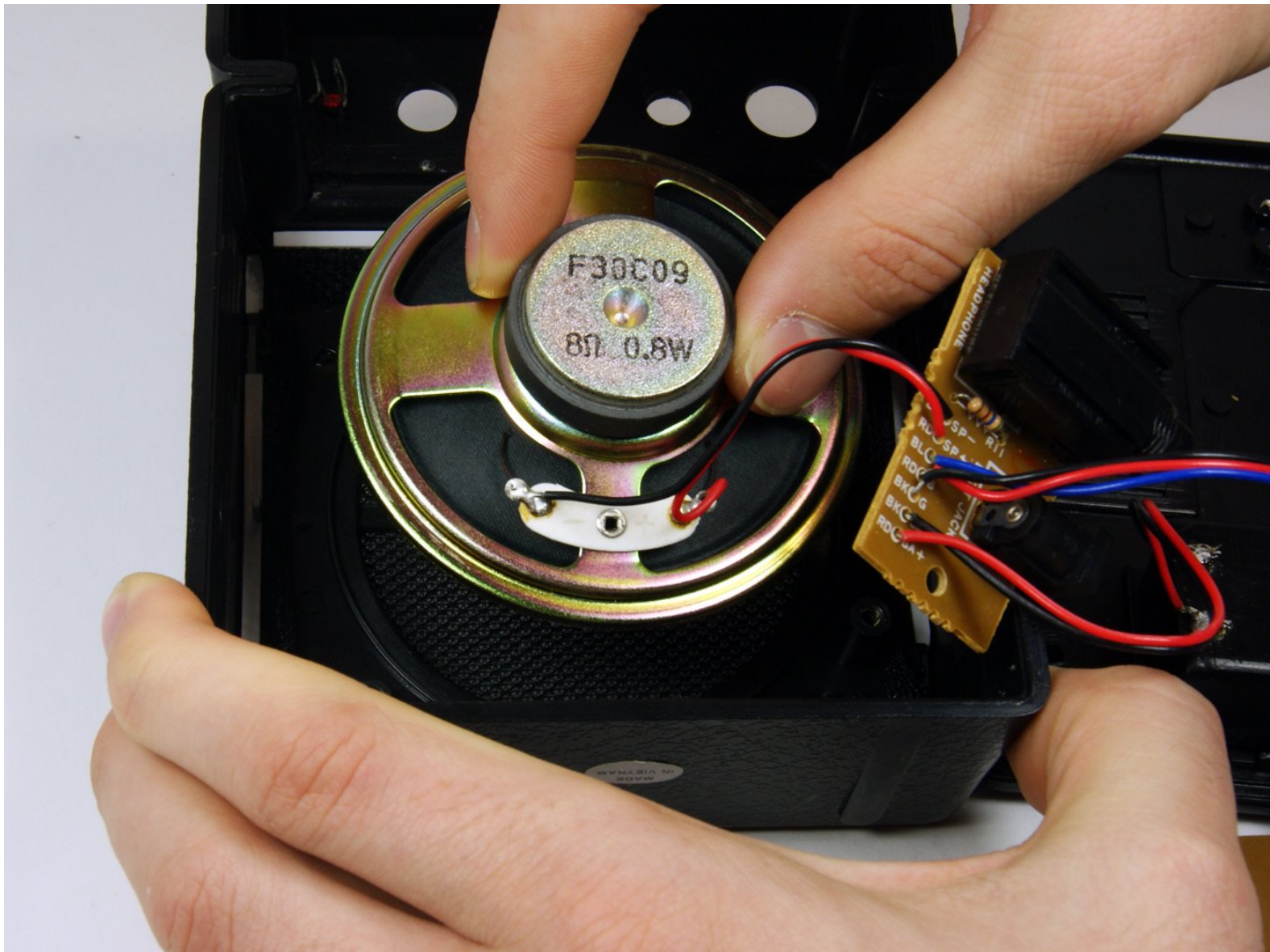




Marshall MS-2 Speaker Replacement

Remove and replace the speaker inside the amp.

Written By: MacKinley





TOOLS:

- [Phillips #000 Screwdriver](#) (1)
-

Step 1 — Disassembling Marshall MS-2 Micro Amp Case Disassembly



- First be sure to turn the power switch to the off position.
- Do this by turning the leftmost knob counter-clockwise as until the line points to "off."

Step 2



- Now remove the battery.
- On the back of the device locate the battery cover.
- Remove it by pushing down on the clip.
- Then pull the piece of fabric until the battery comes out.

Step 3



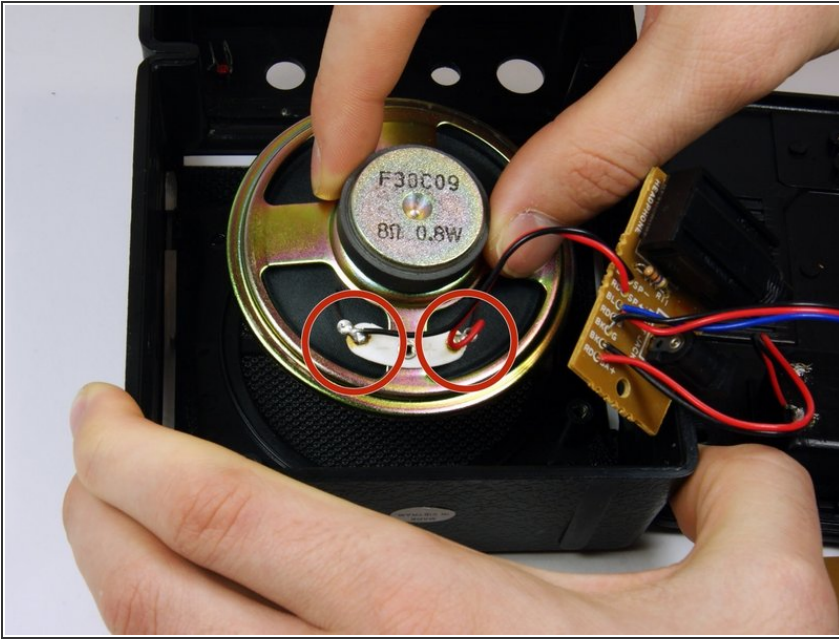
- Use the long, skinny phillips head screwdriver to remove the 4 7/16" screws on the back of the device in the four corners.
- ⓘ Once unscrewed, do not try to take each screw out. Move to next step once all screws have been unscrewed.

Step 4



- Now pull the back panel off and place it down as shown. Pull the panel straight up so you do not lose the screws.

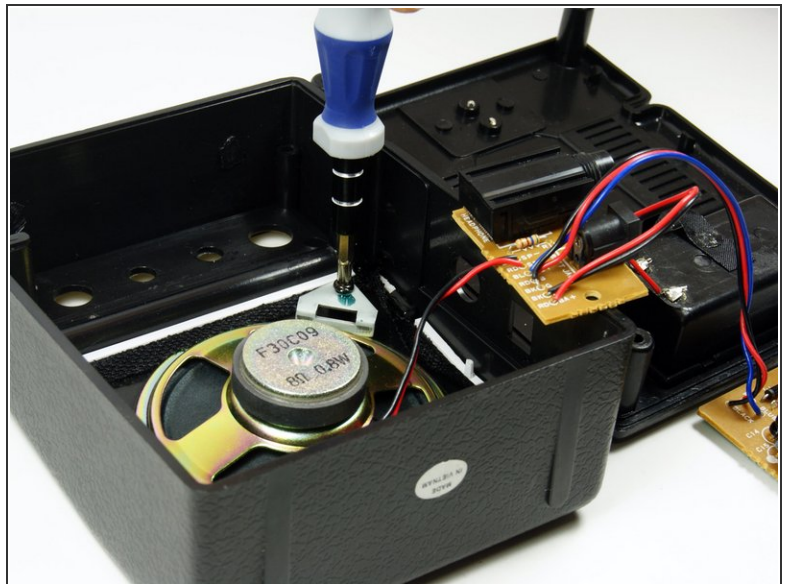
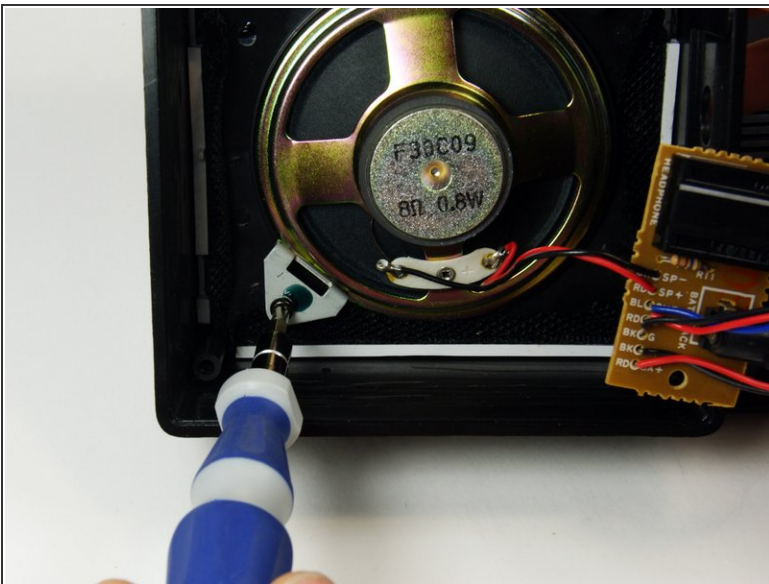
Step 5 — Speaker



- Use a soldering iron to disconnect the two wires from the speaker.

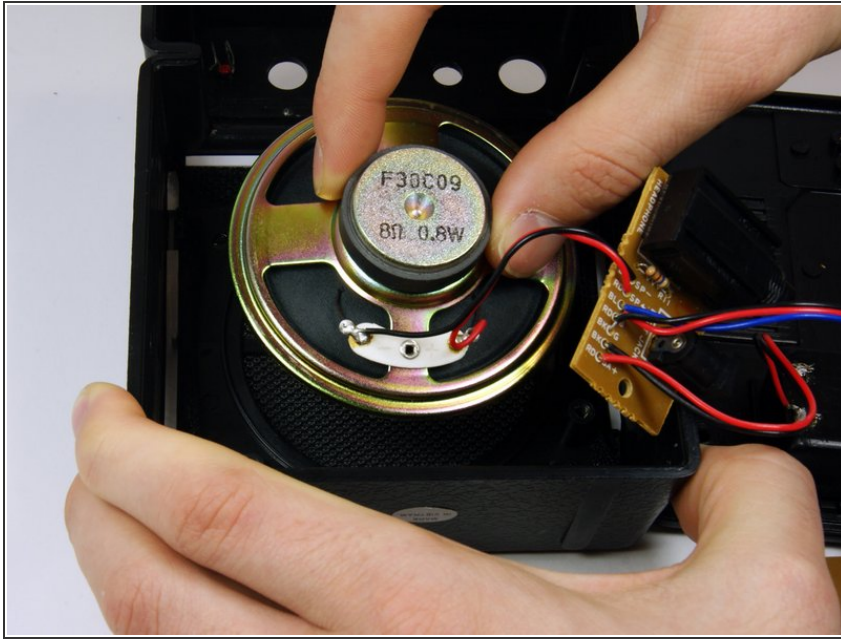
❗ [If you haven't soldered before check out this guide.](#)

Step 6



- Remove the two 7/16" screws located in the bottom left and top right corners with a phillips head screw driver. After removing the screws, the metal clips will need to be removed as well.

Step 7



- You may now remove the speaker by pulling it straight out.

To reassemble your device, follow these instructions in reverse order.