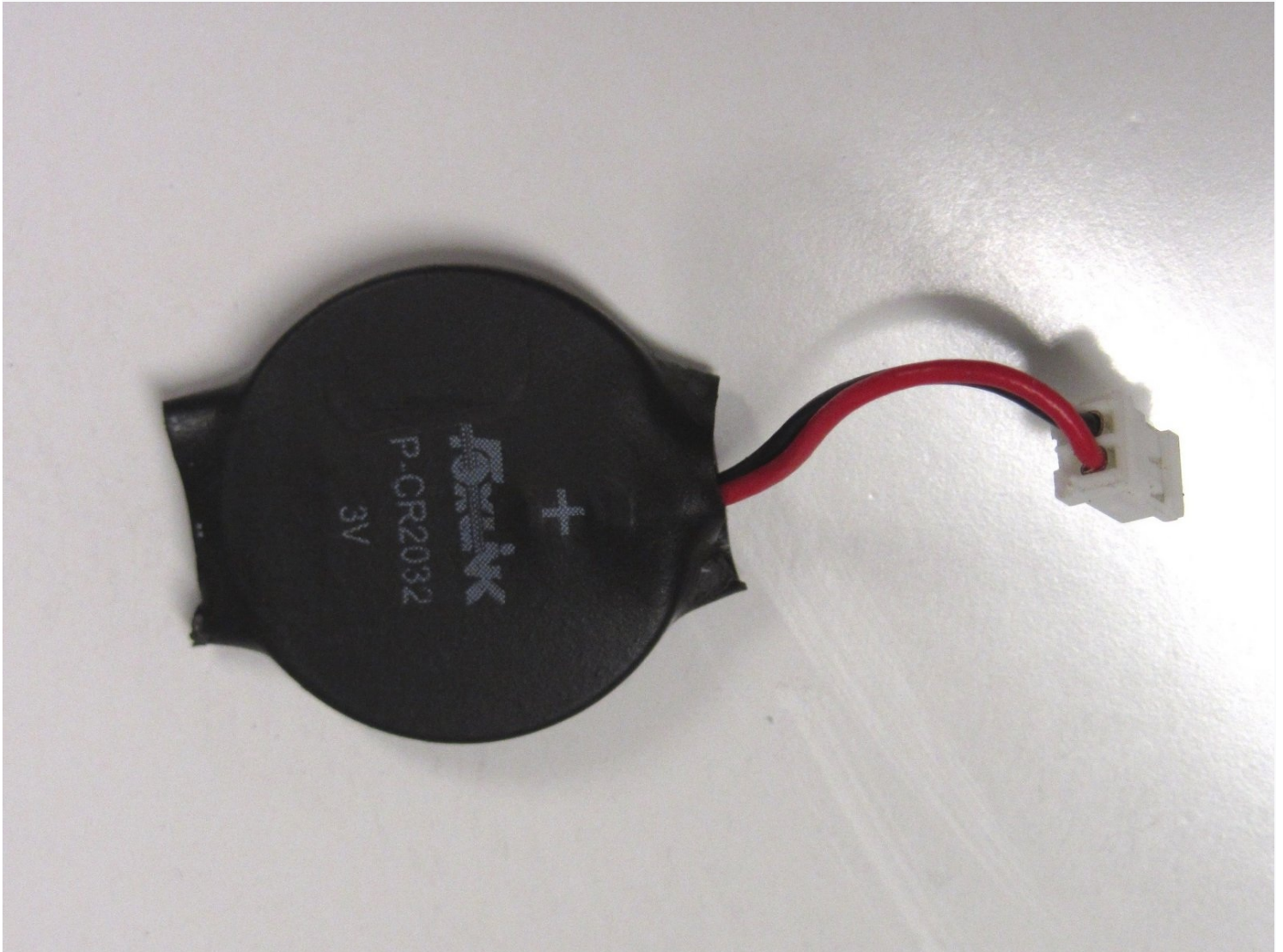




PlayStation 2 Slimline Clock Battery Replacement

This guide will show you how to locate and...

Written By: Thomas Sullivan



INTRODUCTION

This guide will show you how to locate and replace the clock battery, sometimes known as a CMOS battery or motherboard battery, in the PlayStation 2 Slimline.

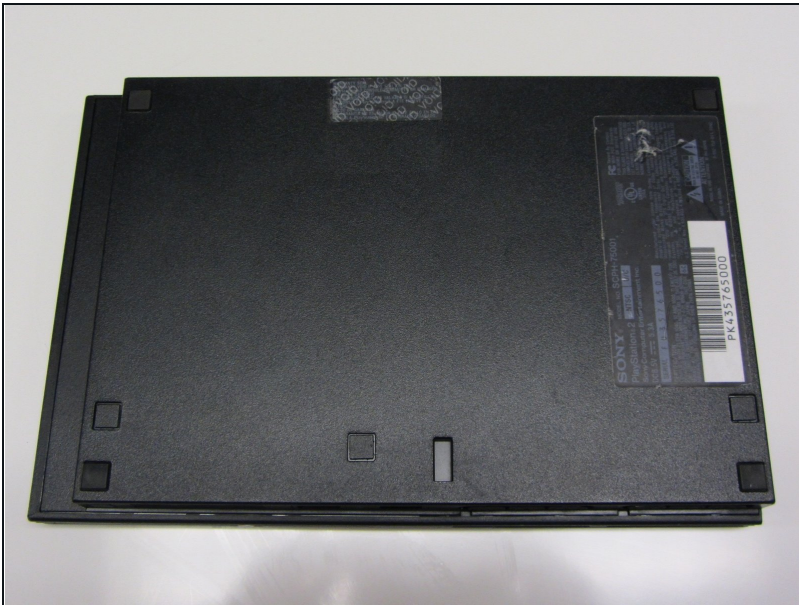
TOOLS:

Phillips #1 Screwdriver (1)

Spudger (1)

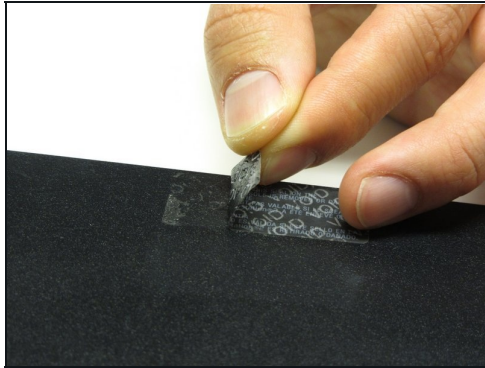
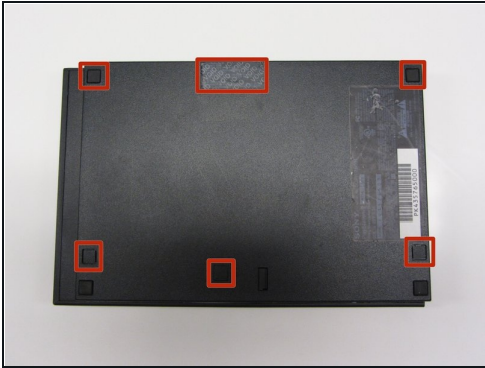
Tweezers (1)

Step 1 — Outer Shell



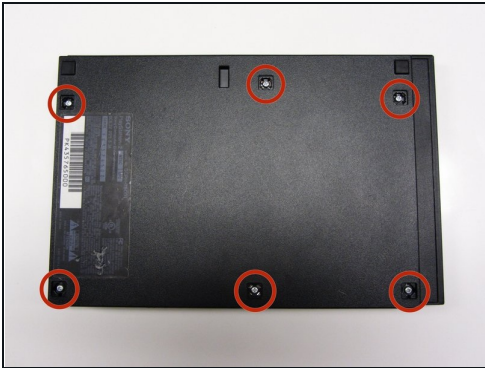
- Disconnect all cables from the console and flip the unit over to reveal its base.

Step 2



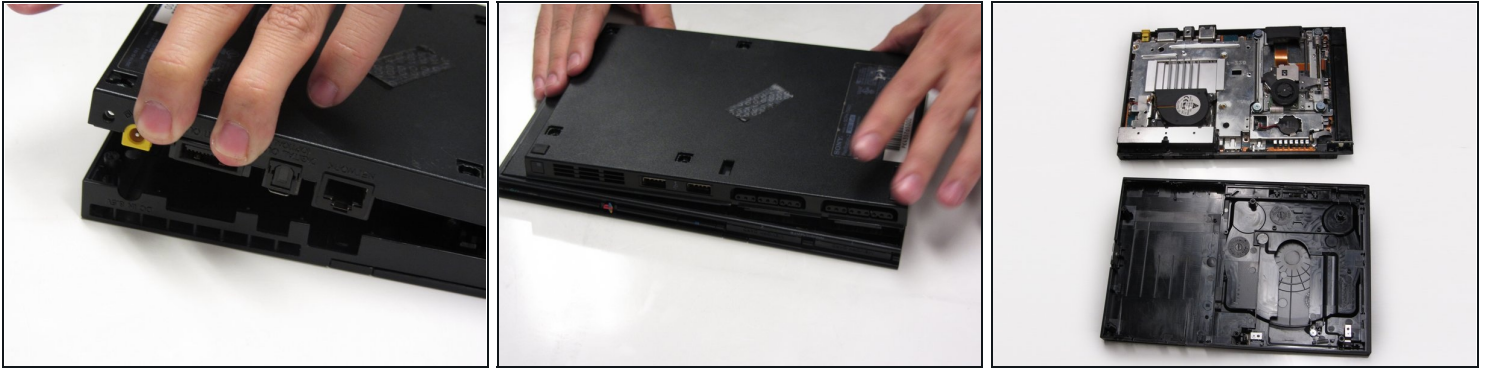
- Locate the 6 feet on the base of the unit. Pry them off using a spudger to reveal the screws.
- ⓘ Note: One of the feet is located under the sticker shown in the photo. Removing this sticker will void any warranty with Sony.

Step 3



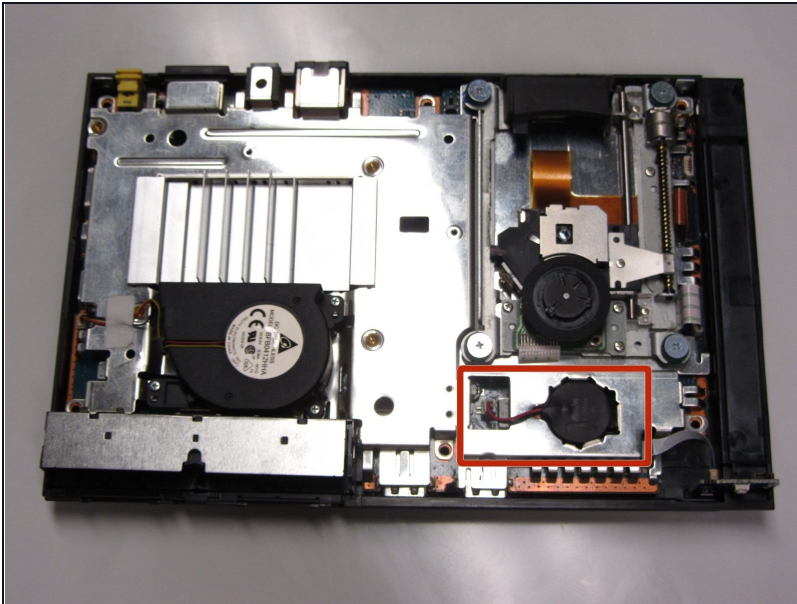
- Remove all six 4.0 mm screws from the base of the unit using a #1 Phillips screwdriver.

Step 4



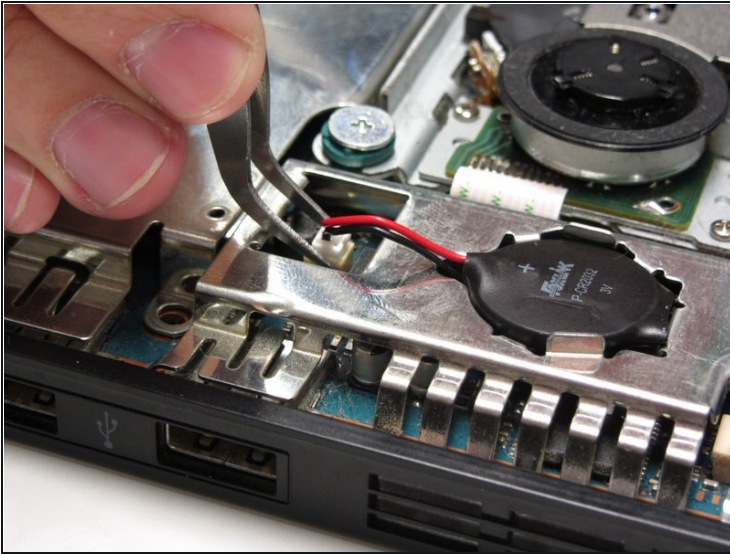
- Starting at the corner at which the power and Ethernet ports are located, pry open the outer shell using a spudger and continue around the entire unit.
- ⓘ Note: You may use your hands for additional force to separate the two pieces of the outer shell.

Step 5 — Clock Battery



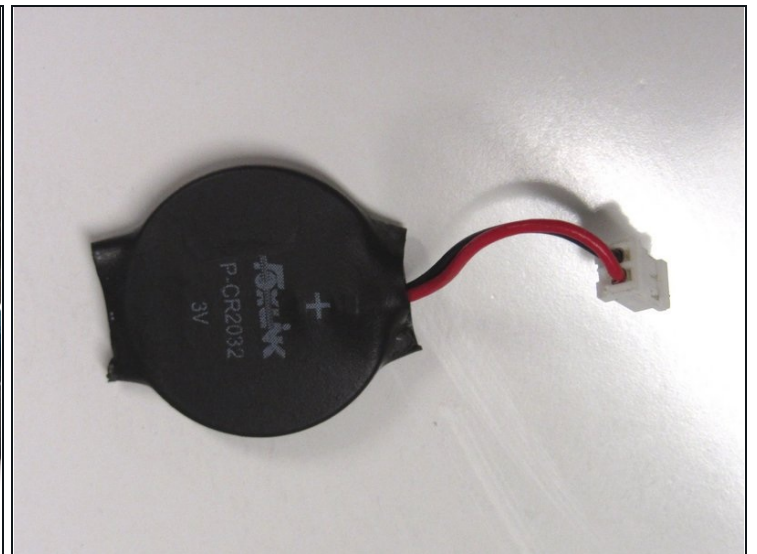
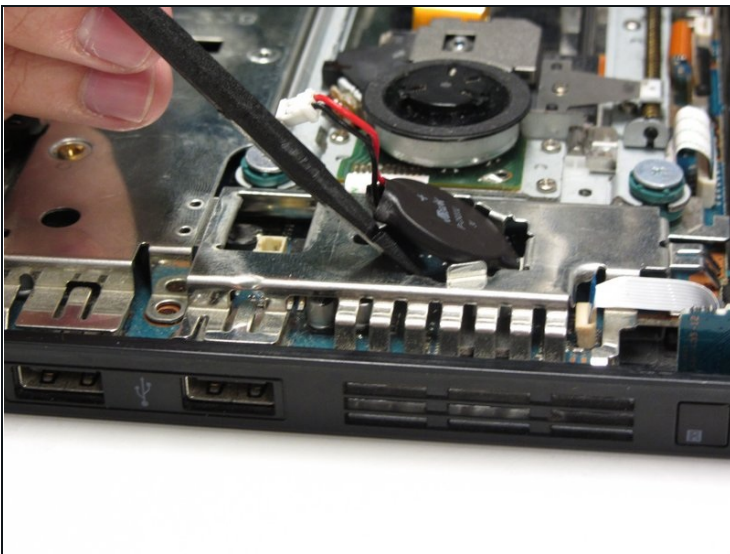
- Locate the clock battery at the front, right section of the unit. The battery has a circular shape with red (+) and black (-) wires connecting to the motherboard.

Step 6



- Lift the connector from the motherboard with a pair of [tweezers](#) using a firm, upward force.

Step 7



- Gently lift and remove the battery from its compartment using a spudger.

To reassemble your device, follow these instructions in reverse order.