



Samsung SPH-A660 Teardown

Give a short summary.

Written By: Mike Buerli



INTRODUCTION

Samsung SPH-A660 cellular phone carried by Sprint. Comes with basic features: no camera, color screen, flip phone with extendable antenna.

TOOLS:

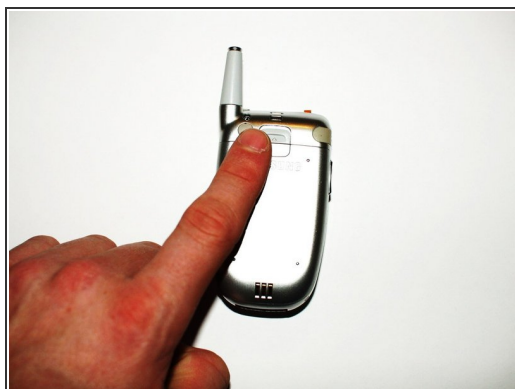
- [Phillips #00 Screwdriver](#) (1)
 - [iFixit Opening Tools](#) (1)
-

Step 1 — Samsung SPH-A660 Teardown



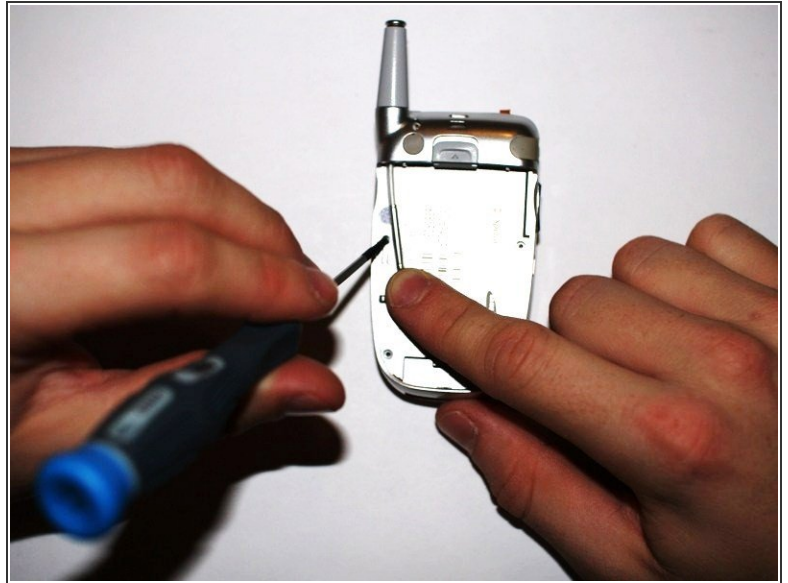
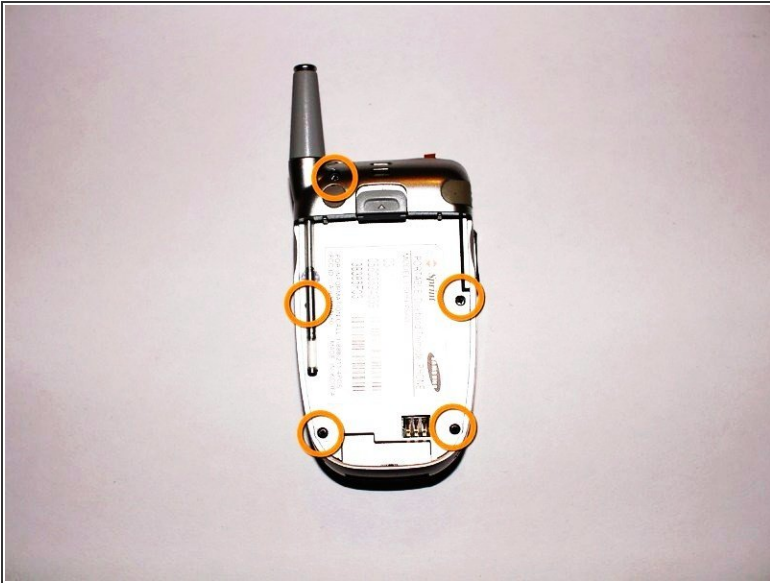
- The Samsung SPH-A660 Cell Phone.

Step 2



- Slide the grey tab forward and pry the battery up and out of the phone.

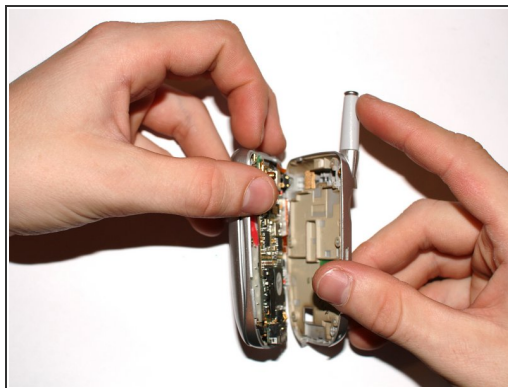
Step 3



- Once the battery pack is removed from the phone, remove indicated screws.

i Bend back the antenna to access the left middle screw.

Step 4

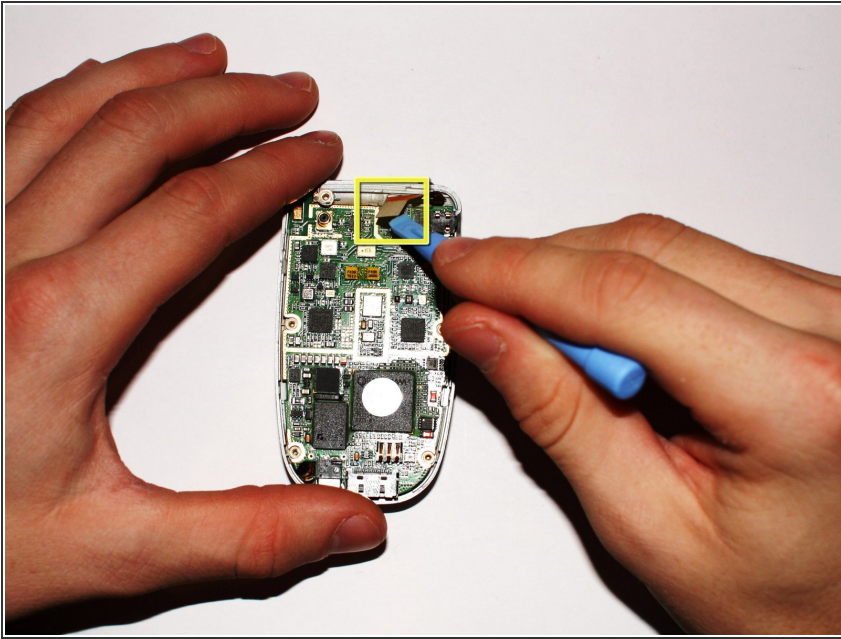


- Insert the plastic opening tool into the slot that runs along the side of the phone. Slowly pry open the phone by working your way around the edges.

- There are tabs which hold the phone together and you may need force to pry the phone apart.

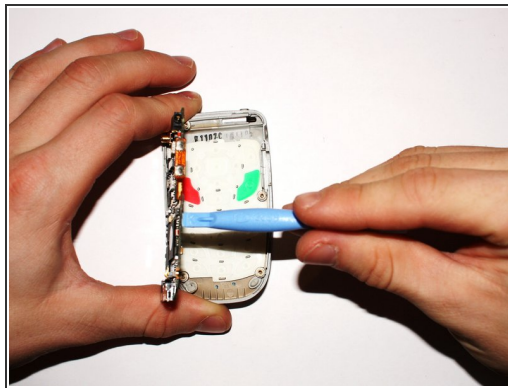
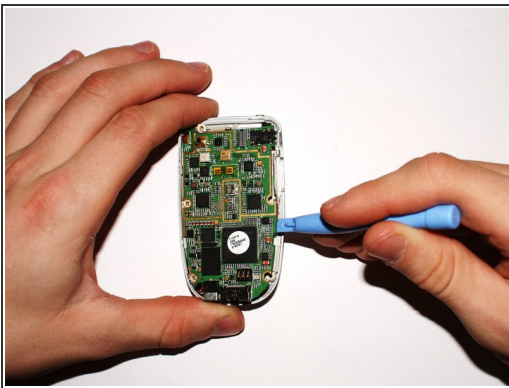
i During this step, the side volume key may fall out; this is okay.

Step 5



- Carefully remove the highlighted connector between the logic board and the screen by using either your fingers or plastic opening tool.
- ⓘ Lift up on the tabbed connector to remove it.

Step 6



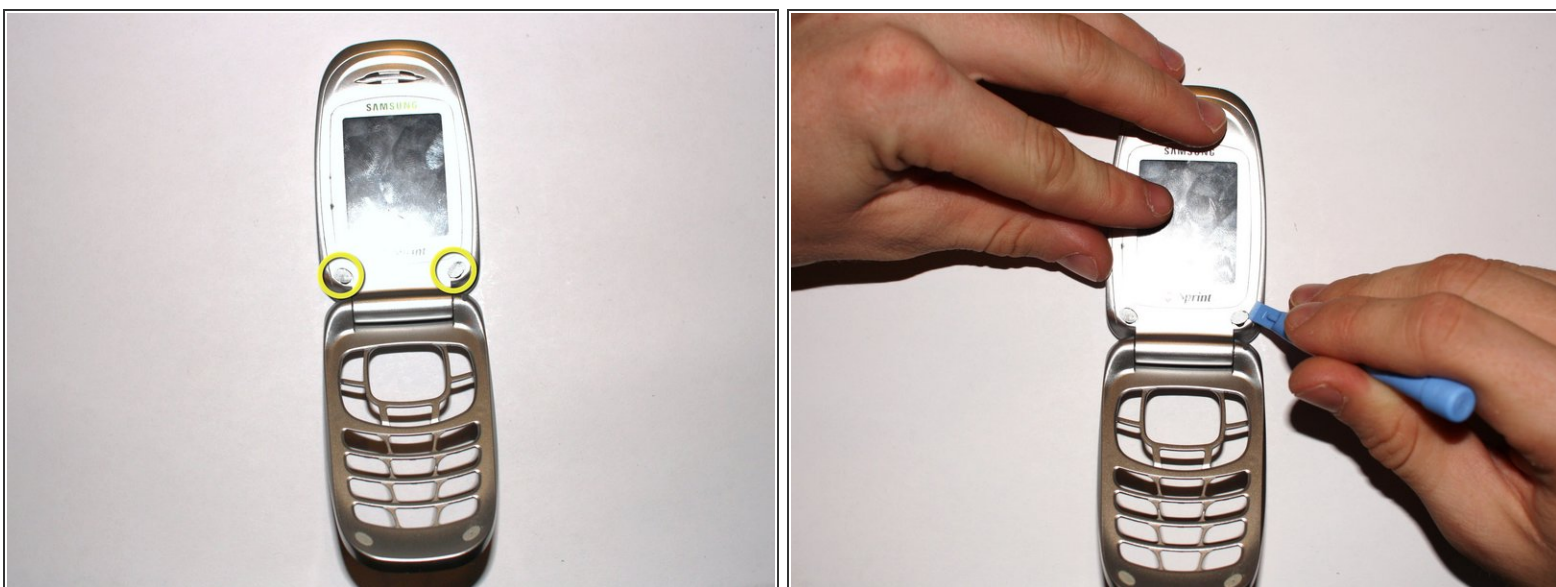
- Remove the logic board from the phone by gently lifting up on the large green logic board with the plastic opening tool.

Step 7



- Remove the keypad from the body by grasping the white rubbery pad and lifting it off the phone.

Step 8



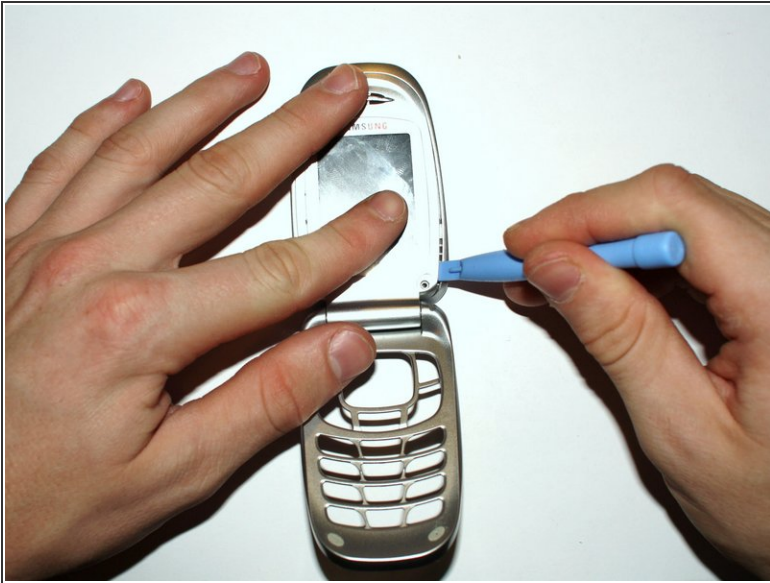
- Remove the two sticky covers by using a flat edge to pry off the stickers in order to gain access to the screws.
- Slide the edge under the stickers and they should come off with relative ease.

Step 9



- Remove the two highlighted screws from the phone below the screen in order to open the display area.

Step 10



- Pry the phone display open by inserting a plastic opening tool into the crack that runs along the side of the phone display under the screws.
 - Once you have the display cover wedged open, use your fingers to pry the whole cover off the phone.
- ⚠ Some force may be needed to remove the cover, as several tabs are there which hold the two parts in place. Therefore, be careful when prying the cover apart

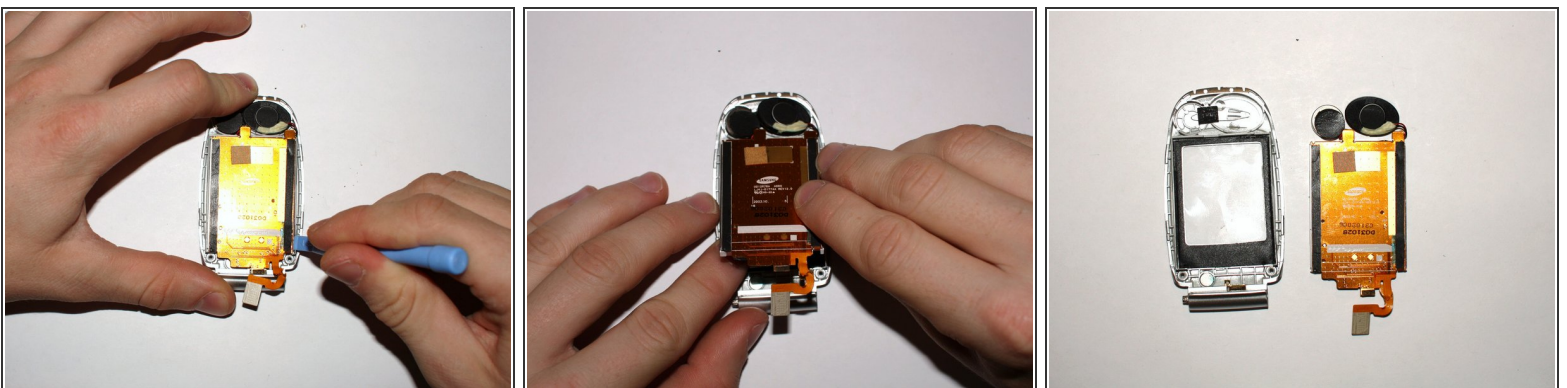
Step 11



⚠ Be Extremely Careful in this next step as if you pry the hinge off too fast you may rip the connector between the logic board and screen.

- Carefully wedge a plastic opening tool between the hinge on the body as shown in the highlighted area in picture two. (be sure to insert the wedge into the right hinge when looking down onto the phone as in the picture).
- ⓘ Slowly pry the hinge off the body as shown in the third picture and set the phone down when you get to this step.
- Next slide the connector cable out of the slot on the back side of the phone and the screen will be disconnected from the key pad body.

Step 12



- Next use a plastic opening tool to pry the screen from the cell phone cover.

Step 13



● **Congratulations!!!** You have successfully disassembled the Samsung SPH-A660

- Outer Casing
- Phone Top Cover
- LCD Screen
- Logic Board
- Phone Back
- Battery
- Keypad